

# WATERMASTER SERVICE IN THE WEST COAST BASIN - LOS ANGELES COUNTY

July 1, 2022 - June 30, 2023

November 2023



## WEST COAST BASIN WATERMASTER

### WEST COAST BASIN WATER RIGHTS PANEL

Prepared by the Administrative Body



# WATERMASTER SERVICE

IN THE WEST COAST BASIN  
LOS ANGELES COUNTY

July 1, 2022 - June 30, 2023

November 2023

**WEST COAST BASIN  
WATER RIGHTS PANEL**



Prepared by the  
Water Replenishment District of Southern California (WRD)  
West Coast Basin Administrative Body  
for the  
West Coast Basin Watermaster Water Rights Panel  
Adopted on  
November 7, 2023

# Contents

<b>Summary of Pertinent Data</b>	1
<b>Introduction</b>	2
Executive Summary	2
Background	2
<b>Water Use</b>	4
A. Adjudicated Extractions by Parties	4
B. Groundwater Storage Activities by Parties	4
C. Total Extraction Rights and Overextractions	5
D. Extractions of Contaminated Groundwater	5
E. Extractions by Non-Parties	5
F. Extraction Exemptions	5
G. Adjudicated Rights Transfers	6
H. Exchange Pool	7
I. Extraction Wells	7
J. Meter Testing Program	7
<b>Water Supply</b>	9
A. Precipitation	9
B. Groundwater Recharge	9
C. In-Lieu Replenishment	10
D. Imported Water	10
E. Recycled Water	10
F. Total Water Use	10
G. Exported Water	10
H. Increased Extraction in the Central Basin for Certain Purveyors Serving Overlying Communities	10
I. Seawater Intrusion Barrier Projects	11
J. Groundwater Levels	11
<b>Watermaster Costs and Budget</b>	12

## Tables

Table 1 - Water Rights Accounting (acre-feet)	14
Table 2 - Storage Accounting	16
Table 3 - Water Put Into Storage	17
Table 4 - Water Extracted From Storage	17
Table 5 - Storage Transfers	17
Table 6 - Historical Storage Summary	18
Table 7 - Over-extractions	18
Table 8 - Non-Consumptive Water Use Permits	19
Table 9 - Extractions by Non-Parties	19
Table 10 - Leases (acre-feet)	20
Table 11 - Permanent Transfers (acre-feet)	21
Table 12 - Exchange Pool	22
Table 13 - Extraction Wells Completed	22
Table 14 - Extraction Wells Destroyed	22
Table 15 - Replenishment Operations	23
Table 16 - WRD In-Lieu Recharge	24
Table 17 - Imported Water Use	24
Table 18 - Recycled Water Use	25
Table 19 - Seawater Intrusion Barrier Project Operations	25
Table 20 - Apportionment of Budget Among Rights Holders	26

## Figures

Figure 1 - West Coast Basin (groundwater production)	28
Figure 2 - Monthly Water Production (excludes non-consumptive use)	29
Figure 3 - West Coast Basin (showing key wells and facilities)	30
Figure 4 - Monthly Mean Precipitation	31
Figure 5 - Total Water Use	32
Figure 6 - Water Level Hydrographs	33

## Appendices

Appendix A - Groudwater Extractions July 2022-June 2023	34
Appendix B - Succession of Adjudicated Rights as of June 2023	41
Appendix C - Parties to the Amended Judgment as of June 2023	49
Appendix D - Erratum of West Coast Basin Watermaster Annual Report for 2021-2022	51

# Governance

## 2022- 2023 AY

### West Coast Basin Administrative Body

Water Replenishment District

**President**

John D. S. Allen  
*Division 3*

**Vice-President**

Vera Robles DeWitt  
*Division 5*

**Secretary**

Sergio Calderon  
*Division 4*

**Treasurer**

Rob Katherman  
*Division 2*

**Director**

Joy Langford  
*Division 1*

**General Manager**

Stephan Tucker

### Storage Panel

Water Replenishment District  
Board of Directors

West Coast Basin Water Rights Panel

### West Coast Basin Water Rights Panel

**Chair**

Katherine Nutting  
*Golden State Water Company*

**Vice-Chair**

Chuck Schaich  
*City of Torrance*

**Treasurer**

Lourdes Vargas  
*City of Manhattan Beach*

Charles Campbell  
*Torrance Refining Company LLC*

Ron Sorensen  
*California Water Service Company*

### Administrative Body Staff

Esther Valle Rojas

Asha Kreiling

Greg Osti

Jackie Ramirez

Tiffani Fong

# Summary of Pertinent Data

Item	Administrative Year 2021 - 2022	Administrative Year 2022 - 2023
Parties	71	71
Rights Holders	56	56
Active pumpers	20	23
Active Non-Parties	0	0
Adjudicated Rights (acre-feet)	64,468.25	64,468.25
Water put into Storage (acre-feet)	1,127.70	0
Mean Precipitation (inches)	9.43	23.64
Injection at barrier projects (acre-feet)	19,146	18,703
Exported water use by Parties (acre-feet)	0	0
Watermaster Budget, total <sup>1</sup>	\$108,428	\$135,535
Adjudicated Rights Extractions (acre-feet) <sup>2</sup>	30,791	32,482
Recycled water use by Parties (acre-feet)	21,851	22,259
Imported water use by Parties (acre-feet)	140,469	123,651
<b>Total water use by Parties (acre-feet)</b>	<b>193,111<sup>3</sup></b>	<b>178,392</b>

<sup>1</sup> For the 2022- 2023 AY, Water Rights Panel Assessment: 64,468.25; Administrative Body Budget: \$135,535

<sup>2</sup> Excludes extractions by Parties with non-consumptive water use permits and by non-parties.

<sup>3</sup> 2021-2022 Total Water use by Parties was previously listed as 188,157. Total was updated due to reporting correction by Cal Water Service Company (Dominguez) and correction of recycled water use. Details are listed in the Erratum of West Coast Basin Watermaster Annual Report for July 1, 2021- June 30, 2022 (Appendix D).

# Introduction

## Executive Summary

This Watermaster Annual Report, developed by the Administrative Body and adopted by the Water Rights Panel, summarizes information on groundwater extractions, storage accounts, use of imported water and recycled water, replenishment operations and the budget and finances of the West Coast Basin (Basin) Watermaster during the 2022-2023 administrative year (AY). This report complies with the provisions set forth in the West Basin Amended Judgment.

During the 2022-2023 AY, the Basin experienced a 5% increase in groundwater production from the previous AY. The production total does not include any water extracted under an exemption as described in Section F. The report is organized into three sections, including Water Use, Water Supply, and Watermaster Costs and Budget. In addition, the report provides various tables and figures describing the narrated information.

## Background

The West Coast Basin underlies 160 square miles in the southwestern part of the coastal plain of Los Angeles County. Figure 1 shows the location and adjudicated boundaries of the Basin. The Basin is bounded on the west by the Santa Monica Bay, on the north by the Ballona Escarpment, on the east by the Newport-Inglewood Uplift, and on the south by the San Pedro Bay and the Palos Verdes Hills. Twenty incorporated cities and several unincorporated areas overlie the Basin.

An essential portion of the water needed by the residents and industries in the area overlying the Basin is pumped directly from groundwater stored in the Basins aquifers. In 1945, the intrusion of seawater caused by declining groundwater levels due to over pumping threatened the quality and quantity of the groundwater supply. In response to the seawater intrusion problem, legal action was initiated to halt the pumping overdraft and prevent further damage to the Basin. In 1955, the Superior Court of Los Angeles County (Court) appointed the Department of Water Resources (DWR) as the Watermaster to administer an Interim Agreement. Subsequently, in 1961, the Court retained the DWR as the Watermaster of the final West Coast Basin Adjudication (Judgment).

The Judgment has been amended multiple times since its inception. Noticeably, when the Judgment was amended on December 5, 2014 (Amended Judgment), for the first time, the Court allowed Parties to have direct input into how the Judgment is administered and enforced. Furthermore, the Amended Judgment confirmed the retirement of DWR as the Watermaster and established a new Watermaster structure.

The Watermaster structure includes three separate constituent bodies serving different functions: 1) an Administrative Body, 2) a Water Rights Panel, and 3) a Storage Panel. The Administrative Body was appointed by the Court to perform the Watermaster accounting and reporting functions.

The WRD was appointed to fulfill this role. The Water Rights Panel enforces issues related to the pumping rights within the adjudications and is composed of five Basin adjudicated rights holders. The Storage Panel is comprised of the Water Rights Panel and the WRD Board of Directors, which together approve certain groundwater storage efforts.

The Watermaster assists the Court in the administration and enforcement of the provisions of the Judgment. Among other duties, the Watermaster monitors groundwater levels, extractions, storage, and reports significant water-related events.



# Water Use

## A. Adjudicated Extractions by Parties

The Judgment limits the amount of groundwater each Party with water rights may extract annually from the Basin. This limit is referred to as an “adjudicated right” or “AR”. The AR for each Party is listed in Table 1. Parties are required to report water extractions to the Administrative Body each month (or quarterly for small producers). Appendix A lists, by Party, the volume of groundwater extracted each month from each active well in the Basin. Figure 1 illustrates the variation of groundwater production by three distinct production classifications: less than 500 acre-feet per year (afy), 500 to 2,000 afy, and more than 2,000 afy, during the 2022-2023 AY. In addition, Figure 2 shows monthly water production (excluding non-consumptive use) for the 2022-2023 AY totaling 32,482 acre-feet (af), which is a 5.5% increase from the previous AY.

To provide flexibility regarding water rights, the Judgment contains provisions, such as “carryover,” which allows each Party to carry over into the succeeding administrative year 100% of their unused AR plus or minus (+/-) available leases with flex. Furthermore, the amount of available carryover is reduced by the amount of stored water held by the Party. Yet, per the Amended Judgment, such reduction will not cause the amount of carryover to be less than 20% of a Party’s total AR (including leases with flex). This type of provision is in-place to meet unforeseen water demands.

## B. Groundwater Storage Activities by Parties

The Judgment permits Parties with water rights to store water in the Basin for future use. Pursuant to Section V.3.(B) of the Judgment, Parties can convert their carryover to storage upon payment of the Replenishment Assessment to WRD.

Table 2 describes storage accounting, specifically the total carryover from the 2021-2022 AY, storage activity for the 2022-2023 AY (transfers, water put into storage, water extracted from storage, and balances), and total carryover balance into the ensuing AY. Table 3 lists the total quantity of water put into storage during the 2022-2023 AY. There was no water put into storage and no storage extractions during the 2022-2023 AY (Table 4).

The Judgment allows the transfer of stored water between Parties. However, there were no storage transfers in the 2022-2023 AY (Table 5).

Table 6 shows a historical storage summary from 2014-2015 to 2022-2023 AY, including water put into storage, storage extractions, storage balance, and the available adjudicated storage capacity.

### **C. Total Extraction Rights and Overextractions**

Parties with water rights have a total extraction right, which is the maximum amount of groundwater that can be extracted in a single AY. In the West Coast Basin, Parties with one-year carryover and/or storage rights are allowed to extract up to 120% of the sum of their AR plus or minus (+/-) leased water. For example, if a Party has an AR of 1,000 af, 400 stored water rights, and leases an additional 200 af, their maximum yearly total extraction would be calculated as follows:  $(1,000 + 200) \times 1.2 = 1,440$  af. Parties without one-year carryover or storage rights can overextract 10% of their AR plus or minus (+/-) leased water or 2 af, whichever is greater. Under certain circumstances, a Party may be allowed extraction in a greater amount; however, prior approval must be obtained from the West Coast Basin Storage Panel. Any Party that exceeds their total extraction right without prior approval from Watermaster is in violation of the Judgment.

Any overextraction, which is the difference between total rights and total extraction, is deducted from that Party's subsequent administrative year's AR. Watermaster will notify a Party when they are in violation of the Judgment and/or overextracts.

During the 2022-2023 AY, Pacific Crest Cemetery had an overextraction of 3.92 af (Table 7). Pacific Crest Cemetery sold all their AR and leased in water rights to offset their production. However, they started the 2022-2023 AY with a negative carryover and their production exceeded the leased rights, which resulted in an overextraction.

### **D. Extractions of Contaminated Groundwater**

A Party that is a water rights holder may petition the Administrative Body (WRD) for a Non-Consumptive Water Use Permit (NCWUP) as part of a project to remediate or ameliorate groundwater contamination. If the petition is granted, the Party may extract the groundwater without it counting against its production rights, so long as the conditions of the Judgment are met. A non-Party may extract contaminated groundwater for cleanup purposes by partnering with a Party who obtains the NCWUP and then assigns it to the non-Party. Table 8 lists current NCWUPs issued by WRD and the amounts of groundwater extracted under those permits.

In the 2022-2023 AY there were 102.21 af of non-consumptive water use extractions. Appendix A reports the extractions monthly by well. Negative values listed in Appendix A represent a net re-injection of water produced.

### **E. Extractions by Non-Parties**

In the 2022-2023 AY there were no extractions by Non-Parties reported, not including NCWUPs (Table 9).

### **F. Extraction Exemptions**

The Court approved an amendment to the Judgment during the 2018-2019 AY, which adds Section V.15, which allows for the extraction of non-potable groundwater by agencies with no AR. Specifically, extractions of groundwater are only permitted if all the following criteria are satisfied:

1. Only groundwater containing at least 500 milligrams/liter of chloride, as measured at the influent to any facility used to treat such water, may be extracted.
2. Extractions must be done by a public agency with statutory authority to clean contaminated groundwater.
3. Extractions of such groundwater must provide a "Regional Benefit" (as defined in Section II.27. of the Judgment) to the Basin as a whole and not just to the extracting Party.
4. All extractions pursuant to the new Paragraph V.15 are subject to the payment of WRD's Replenishment Assessment.

In addition, all new projects seeking an extraction exemption must be reviewed (as set forth in Section V.13 of the Judgment) and approved by the Water Rights Panel and WRD in its capacity as the Administrative Body. The Water Rights Panel and WRD must ensure that the project is technically feasible and will not cause material physical harm (as defined in Section II.21 of the Judgment) to the Basin. In addition, all approved extraction exemption projects must provide annual reporting in response to the required criteria.

During the 2022-2023 AY, WRD had a total production of 3,783.17 af under the approved exemption received in 2018 for the Goldsworthy Desalter (Appendix A). In accordance with the terms of the exemption permit, the average chloride level at the influent remained above 500 milligrams/liter. There were no new extraction exemption requests submitted during the 2022-2023 AY.

## **G. Adjudicated Rights Transfers**

Each year, ARs are transferred between Parties through leases (temporary transfers) and change of ownership (permanent transfers) transactions. Table 10 shows transfers of AR through leases, specifically the Parties involved, transaction type (leases with and without flex), amount, and recordation date. During the 2022-2023 AY there were seven leases that transferred a total of 3,425.30 af (six leases with flex and one without). Leases with flex transfer both the pumping right and associated carryover rights to the lessee for the term stated within the lease agreement.

In transferring water rights, Parties must specify (1) the type of right (i.e., adjudicated rights, one-year carryover, or drought carryover), (2) the amount of right to the nearest 0.01 af, and (3) the period of the lease, if applicable. Moreover, all leases must be made on an AY basis and must be executed by the Parties and received by the Administrative Body no later than one month and 15 days following the end of the AY in which the lease is effective.

Permanent transfers of water rights must be documented accordingly. Specifically, when land is sold, in which a water right has been developed, the Administrative Body must receive a copy of the transfer document if the water right is also transferred. Water rights do not automatically pass to the new landowner unless the transfer document specifies the transfer of water rights and the exact amount of the water right that was transferred with the land. Watermaster maintains a template for a Deed of Water Rights - Permanent Transfer transaction on its website to ensure the information provided on the transfer document is sufficient. There was one permanent transfer of AR in the 2022-2023 AY that totaled 39.40 af (Table 11).

For 2022-2023 AY, there were 71 Parties to the Judgment (individuals or entities that have a water right, privilege or obligation to the Judgment) and 56 rights holders, which is the same amount from the previous year. Since water rights were permanently transferred from one party to another entity, there was no net change in total water rights holders. However, there is one new water rights holder that is a non-party. For the non-party to exercise their water rights, they will need to become a party to the Judgment by filing a Stipulation in Intervention with the court for consideration. Appendix B shows the succession of ARs in the Basin. In addition, Appendix C lists current Parties to the Judgment, Water Rights Holders, and Non-Parties with water rights.

## **H. Exchange Pool**

The Judgment authorizes an Exchange Pool to provide additional water rights to Parties without sufficient water. If a Party's estimated water requirement for the following fiscal year exceeds its total available water supply, that Party may purchase additional water from the Exchange Pool. There were no requests for Exchange Pool water during the 2022-2023 AY (Table 12).

## **I. Extraction Wells**

Seventy-one (71) wells had reported extractions in 2022-2023 AY, which is one less than the previous AY. The locations of the extraction wells are shown on Figure 1 by three distinct production classifications. Furthermore, according to information provided to Watermaster, there was one extraction well completed (Table 13) and no extraction wells destroyed in 2022-2023 AY (Table 14).

## **J. Meter Testing Program**

Accurate measurement of groundwater extractions is essential for the successful management of groundwater. Therefore, Watermaster requires an operative water meter to be installed at each extraction well. It is the responsibility of each Party to ensure that its meter and testing facilities are installed properly and are maintained in good working condition. It is the goal of Watermaster to test the water meter at each active extraction well at least once every two years or when a Party requests a meter calibration. Watermaster tests meters by volumetric or pitot tube comparisons or other methods, as appropriate. Watermaster notifies a Party that they must repair or replace their meter when the meter registers beyond five percent accuracy. If the registration accuracy of the meter deviates by more than five percent, Watermaster may revise the well production amount.

The meter testing program is managed by the Water Rights Panel who has contracted with DWR to complete testing. During the 2022-2023 AY, the DWR visited 18 Parties and performed 42 tests. Tests showed that two meters did not pass, which means that the meters were more than five percent fast or slow.

This page intentionally left blank

# Water Supply

## A. Precipitation

Precipitation over the Basin has relatively minimal direct influence on the replenishment of the groundwater in the Basin. This is a result of the low soil permeability that characterizes much of the Basin and large impermeable surfaces (i.e. pavement and buildings). However, during the years of high rainfall, increased runoff from the areas upstream can result in increased replenishment to the Basin and a decreased groundwater demand by water users, which can result in lower rates of groundwater extraction from the Basin.

During the 2022-2023 AY, the following amounts of rainfall were measured at three precipitation stations:

- 23.97 inches at Los Angeles International Airport
- 21.27 inches at Long Beach Airport
- 25.69 inches at Torrance Airport

Figure 3 shows the location of the precipitation stations and other key facilities, and Figure 4 shows the monthly precipitation average measured at the three stations. Based on the total rainfall measured, the mean precipitation in the West Coast Basin was 23.64 inches (Figure 4), which is 213% of the long-term mean of 11.77 inches. The mean precipitation for 2022-2023 AY increased by 14.21 inches compared to the previous AY.

## B. Groundwater Recharge

Replenishment of the Basin occurs primarily by injection of imported and recycled water into the West Coast and Dominguez Gap Seawater intrusion barriers located along the coast, and underflow from the Central Basin to the east and Santa Monica Basin to the north. As mentioned above, minimal rainfall over the Basin infiltrates into deeper aquifers of the Basin.

Water spread in the Central Basin percolates into the aquifers and, eventually, some groundwater crosses the Newport-Inglewood Uplift to replenish the groundwater in the West Coast Basin. Although the recharge water is not directly applied to the West Coast Basin, this recharge process returns large quantities of water to the Basin by substantially increasing the natural subsurface flow from the Central Basin to the West Coast Basin. Table 15 shows the source and quantity of water replenished in the Montebello Forebay area of the Central Basin for the 2021-2022 AY and the 2022-2023 AY. Specifically, for the fourth consecutive year, WRD purchased zero af of imported water for spreading in the Montebello Forebay.

Water injected in the seawater intrusion barrier projects also contributes significantly to the replenishment of the Basin (see Section I, Seawater Intrusion Barrier Projects).

### **C. In-Lieu Replenishment**

During the 1965-1966 water year, WRD, in cooperation with the MWD, began an in-lieu replenishment program, where discounted imported water was offered seasonally due to availability. WRD contracted with producers having access to supplemental imported water that could be used in lieu of extracting groundwater from the Basin to reduce overall pumping impacts. However, due to water shortages and other reasons, MWD discontinued their discounted seasonal imported water in 2011 and as a result, WRD generally suspended its in-lieu replenishment program except under special circumstances. There was no in-lieu recharge in 2022-2023 AY (Table 16).

### **D. Imported Water**

Imported water has been the largest component of supply for the Basin since the mid-1950s. Water is imported from Northern California via the State Water Project and the Colorado River and is made available to water users by MWD through its member agencies: City of Long Beach, West Coast Basin Municipal Water District, City of Torrance, and the City of Los Angeles. Table 17 lists imported water for direct use by source, Party, and quantity. During the 2022-2023 AY, a total of 123,651 af of water was imported, which is a 16,818 af decrease from the previous AY.

### **E. Recycled Water**

Table 18 shows that 22,259 af of recycled water was used in the area overlying the Basin during the 2022-2023 AY, not including WRD replenishment water. This amount is 408 af or 2% more than was used in the previous AY.

### **F. Total Water Use**

Figure 5 shows the total water use in the Basin during the 2022-2023 AY, including extracted groundwater, imported water and recycled water for direct use.

### **G. Exported Water**

No groundwater was exported from the Basin. California Water Service Company exported purchased imported water from the Basin to portions of its service area in the Palos Verdes Hills.

### **H. Increased Extraction in the Central Basin for Certain Purveyors Serving Overlying Communities**

Per Section IV.K of the Central Basin Third Amended Judgment, "certain purveyors" are Parties to both the Central Basin Third Amended Judgment and West Coast Basin Judgment and serve communities overlying both the Central and West Coast Basins. These purveyors include the City of Los Angeles, Golden State Water Company, and California Water Service Company and are allowed to increase their extraction in the Central Basin beyond their Allowed Pumping Allocation, which is the amount of groundwater each Party may extract annually. However, the increased extraction is counted against their AR in the West Coast Basin. Increased extractions are limited to 5,000 af per AY.

---

In the 2022-2023 AY, the Golden State Water Company transferred 404.00 af of their rights from the West Coast Basin into the Central Basin. The 404.00 af was deducted from their unused West Coast Basin AR. This transfer of rights is reflected in Table 1, under the “Increased Extractions” column.

### **I. Seawater Intrusion Barrier Projects**

The Los Angeles County Department of Public Works operates two barrier projects, the West Coast Basin Barrier, and the Dominguez Gap Barrier, within the Basin. The barriers are designed to prevent seawater intrusion into the freshwater aquifers of the Basin. Table 19 shows the quantities of imported and recycled water injected into the two barrier projects. In the 2022-2023 AY, 18,703 af of water were injected into these two barrier systems, which is a 2% decrease from the previous AY. The location of the two barriers systems is illustrated in Figure 3.

### **J. Groundwater Levels**

Figure 3 shows the location and water level elevations in the key wells located in the Basin. Figure 6 shows the water level elevations at the key wells. More detailed information regarding groundwater levels in the Basin is provided in the WRD’s annual Engineering Survey and Report and Regional Groundwater Monitoring Report. These reports are available on WRD’s website.



# Watermaster Costs and Budget

To fund Watermaster activities, both the Administrative Body and the Water Rights Panel can levy an annual assessment on water rights holders under the terms of the Judgment.

The Administrative Body charges a flat fee of twenty dollars (\$20) to each rights holder. In addition, the remaining amount of the Administrative Body budget is charged to all rights holders based upon their proportional ownership of AR. For 2022-2023 AY, the Watermaster budget for the Administrative Body was \$135,535, which is an increase of 25% from the previous AY. Any increase to the Administrative Body budget must be approved by the Water Rights Panel.

The Water Rights Panel assessment is charged to all water rights holders. The Panel waived their assessment in the previous year, but reimplemented the assessment this AY. The Panel assessment was one dollar (\$1.00) per acre-foot of adjudicated rights, resulting in a budget of \$64,468. Table 20 lists the budget summary for the 2022-2023 AY.

This page intentionally left blank

Table 1 – Water Rights Accounting (acre-feet)

Party	AR 2022-2023 <sup>1</sup>	Net Carryover <sup>2</sup> from 2021- 2022	Leases <sup>3</sup>		Storage <sup>4</sup>	Increased Extractions <sup>5</sup>	Total Rights <sup>6</sup>	Amount Pumped <sup>7</sup>	Balance <sup>8</sup>	Allowable carryover into 2023-2024		
			with Flex	w/o Flex						Drought <sup>9</sup>	Normal	Total
ABC Nursery	24.10	24.10	0.00	0.00	0.00		48.20	9.00	39.20	0.00	24.10	24.10
Asahi Fancy Koi	2.00	34.20	0.00	0.00	0.00		36.20	0.00	36.20	32.20	2.00	34.20
Automation Industries	0.70	4.10	0.00	0.00	0.00		4.80	0.00	4.80	3.40	0.70	4.10
Cal. Water Service Co.	4,070.00	4,070.00	-40.00	0.00	0.00		8,100.00	889.54	7,210.46	0.00	4,030.00	4,030.00
Cal. Water Service Co. Dominguez	10,417.45	10,417.45	0.00	0.00	0.00		20,834.90	3,975.66	16,859.24	0.00	10,417.45	10,417.45
Cal. Water Service Co./Hawthorne Lease	0.00	1,882.00	1,882.00	0.00	0.00		3,764.00	347.69	3,416.31	0.00	1,882.00	1,882.00
Carson-Harbor Village Mobile Home Park	7.00	7.00	0.00	0.00	0.00		14.00	0.00	14.00	0.00	7.00	7.00
Carson-Madrone Co.	104.00	104.00	0.00	0.00	0.00		208.00	0.00	208.00	0.00	104.00	104.00
CBS, Inc.	9.50	9.50	0.00	0.00	0.00		19.00	0.00	19.00	0.00	9.50	9.50
Century Builders	4.70	4.70	0.00	0.00	0.00		9.40	0.00	9.40	0.00	4.70	4.70
Chandler Palos Verdes Sand & Gravel Company	4.20	4.20	0.00	0.00	0.00		8.40	0.00	8.40	0.00	4.20	4.20
Chevron USA	4,601.30	4,601.30	0.00	0.00	0.00		9,202.60	0.00	9,202.60	0.00	4,601.30	4,601.30
Coastline Church of Christ	0.70	4.10	0.00	0.00	0.00		4.80	0.00	4.80	3.40	0.70	4.10
Curtis, Owen W	0.36	3.08	0.00	0.00	0.00		3.44	0.00	3.44	2.72	0.36	3.08
Delaney, Golda Estate of	4.10	14.30	0.00	0.00	0.00		18.40	0.00	18.40	10.20	4.10	14.30
Eco Services Operations	521.00	521.00	0.00	0.00	0.00		1,042.00	342.74	699.26	0.00	521.00	521.00
El Segundo, City	953.00	953.00	0.00	0.00	0.00		1,906.00	0.00	1,906.00	0.00	953.00	953.00
Engelsma, Susan Trust	12.10	12.10	-12.10	0.00	0.00		12.10	0.00	12.10	0.00	0.00	0.00
Evergreen America Corp.	5.40	5.40	0.00	0.00	0.00		10.80	0.00	10.80	0.00	5.40	5.40
Fujimoto, SR. & St & JK	20.00	32.28	0.00	0.00	0.00		52.28	0.00	52.28	12.28	20.00	32.28
Gillingham, Florence R	2.40	2.40	0.00	0.00	0.00		4.80	0.00	4.80	0.00	2.40	2.40
Golden State Water Co.	7,502.24	4,202.47	0.00	0.00	3,300.00	-404.00	14,600.71	6,274.55	8,326.16	3.39	4,202.24	4,205.63
Hawthorne, City	1,882.00	0.00	-1,882.00	0.00	0.00		0.00	0.00	0.00	0.00	0.00	0.00
Hillside Memorial Park	104.10	22.01	0.00	0.00	0.00		126.11	116.35	9.76	0.00	9.76	9.76
Hollywood Park Land Co.	282.00	0.00	-282.00	0.00	0.00		0.00	0.00	0.00	0.00	0.00	0.00
Honeywell International	22.50	22.50	0.00	0.00	0.00		45.00	0.00	45.00	0.00	22.50	22.50
Honold, Kristin Brandsma	11.80	11.80	0.00	0.00	0.00		23.60	0.00	23.60	0.00	11.80	11.80
Inglewood Park Cemetery	0.00	35.00	0.00	0.00	0.00		35.00	0.00	35.00	35.00	0.00	35.00
Inglewood, City	4,449.89	4,731.89	282.00	0.00	0.00		9,463.78	1,851.26	7,612.52	0.00	4,731.89	4,731.89
Kinder Morgan Liquids Terminals	167.00	167.00	0.00	0.00	0.00		334.00	38.34	295.66	0.00	167.00	167.00
L.A. County Department of Parks & Rec	363.70	11.92	0.00	0.00	0.00		375.62	207.78	167.84	0.00	167.84	167.84
L.A. County Sanitation Districts-JWPCP	102.00	102.00	0.00	0.00	0.00		204.00	0.00	204.00	0.00	102.00	102.00
Leuzinger, Emma L Estate of	1.40	5.90	0.00	0.00	0.00		7.30	0.00	7.30	4.50	1.40	5.90
Lockheed Martin Corporation	0.10	0.10	0.00	0.00	0.00		0.20	0.00	0.20	0.00	0.10	0.10
Lomita, City	1,352.00	1,102.00	-150.00	0.00	0.00		2,304.00	0.00	2,304.00	0.00	1,202.00	1,202.00
Long Beach, City	0.70	0.70	0.00	40.00	0.00		41.40	20.50	20.90	0.00	0.70	0.70
Lopes, Frank	3.70	13.10	0.00	0.00	0.00		16.80	0.00	16.80	9.40	3.70	13.10
Los Angeles, City	1,503.00	1,503.00	0.00	0.00	0.00		3,006.00	0.00	3,006.00	0.00	1,503.00	1,503.00
Loyola Marymount University	48.10	48.10	0.00	0.00	0.00		96.20	0.00	96.20	0.00	48.10	48.10
Manhattan Beach, City	1,131.20	226.24	0.00	-40.00	2,262.40		3,579.84	489.56	3,090.28	0.00	226.24	226.24
McDonnell Douglas Corp.	1.70	1.70	0.00	0.00	0.00		3.40	0.00	3.40	0.00	1.70	1.70

Party	AR 2022-2023 <sup>1</sup>	Net Carryover <sup>2</sup> from 2021- 2022	Leases <sup>3</sup>		Storage <sup>4</sup>	Increased Extractions <sup>5</sup>	Total Rights <sup>6</sup>	Amount Pumped <sup>7</sup>	Balance <sup>8</sup>	Allowable carryover into 2023-2024		
			with Flex	w/o Flex						Drought <sup>9</sup>	Normal	Total
Montrose Chemical Corp.	1.20	1.20	0.00	0.00	0.00		2.40	0.00	2.40	0.00	1.20	1.20
Mori, Roy H and Kenji	3.60	12.80	0.00	0.00	0.00		16.40	0.00	16.40	9.20	3.60	12.80
Myron Z Chlavin & Nettie Desser Trust & JHD Properties	0.00	0.00	12.10	0.00	0.00		12.10	0.00	12.10	0.00	12.10	12.10
Northrop Corp	38.15	38.15	0.00	0.00	0.00		76.30	0.00	76.30	0.00	38.15	38.15
Nozaki, Sumikichi	7.00	7.00	0.00	0.00	0.00		14.00	0.00	14.00	0.00	7.00	7.00
Pacific Crest Cemetery Co. <sup>10</sup>	0.00	-8.09	40.00	0.00	0.00		31.91	35.83	-3.92	0.00	-3.92	-3.92
Palos Verdes Begonia Farm	0.00	7.40	0.00	0.00	0.00		7.40	0.00	7.40	7.40	0.00	7.40
Phillips 66 Co.	6,170.00	6,748.67	0.00	0.00	0.00		12,918.67	4,965.49	7,953.18	787.78	6,170.00	6,957.78
Rehor, Josephine P	2.20	2.20	0.00	0.00	0.00		4.40	0.00	4.40	0.00	2.20	2.20
Rolling Hills Country Club	290.00	133.00	0.00	0.00	0.00		423.00	199.00	224.00	0.00	224.00	224.00
Roman Catholic Archbishop	72.30	181.50	150.00	0.00	0.00		403.80	177.32	226.48	0.00	222.30	222.30
SCI California Funeral Services Inc	39.40	0.00	0.00	0.00	0.00		39.40	0.00	39.40	0.00	39.40	39.40
Shell Oil Company	1,019.50	0.00	-1,019.50	0.00	0.00		0.00	0.00	0.00	0.00	0.00	0.00
Southern California Edison Co.	57.10	63.32	0.00	0.00	0.00		120.42	17.81	102.61	6.22	57.10	63.32
Tesoro Refining & Marketing Co LLC	8,741.00	9,760.50	1,019.50	0.00	0.00		19,521.00	10,607.01	8,913.99	0.00	8,913.99	8,913.99
Torrance Refining Company LLC	2,596.40	2,626.83	0.00	0.00	0.00		5,223.23	954.97	4,268.26	30.43	2,596.40	2,626.83
Torrance, City	5,638.86	1,127.77	0.00	0.00	11,277.20		18,043.83	961.16	17,082.67	0.00	1,127.77	1,127.77
Vukelich, Mike <sup>10</sup>	10.00	-21.08	0.00	0.00	0.00		-11.08	0.00	-11.08	0.00	-11.08	-11.08
Watson Land Co.	80.20	80.20	0.00	0.00	0.00		160.40	0.00	160.40	0.00	80.20	80.20
Wisburn School District	8.20	8.20	0.00	0.00	0.00		16.40	0.00	16.40	0.00	8.20	8.20
<b>TOTAL:</b>	<b>64,468.25</b>	<b>55,687.21</b>	<b>0.00</b>	<b>0.00</b>	<b>16,839.60</b>	<b>-404.00</b>	<b>136,591.06</b>	<b>32,481.56</b>	<b>104,109.50</b>	<b>957.52</b>	<b>54,484.49</b>	<b>55,442.01</b>

<sup>1</sup> AR - Adjudicated Rights

<sup>2</sup> Net Carryover is the sum of all carryover (drought and one-year) from the previous year AY 2021-2022 less the amount of carryover conversion for the current AY 2022-2023.

See Table 3 for carryover conversion (water put into storage) per party for AY 2022-2023.

<sup>3</sup> See Table 10 for information concerning leases. Leases with flex include carryover provisions.

<sup>4</sup> Storage includes carryover conversions for AY 2022-2023. See Table 2 for a summary of all Storage Accounting per party.

<sup>5</sup> Increased Extraction: Section IV(K) of the Central Basin Judgment permits increased extraction rights through use of up to 5,000 af of certain Parties' West Basin Rights in the Central Basin

The aforementioned Parties include City of Los Angeles, Golden State Water Company, and California Water Service Company.

<sup>6</sup> Total Rights = Adjudicated Rights + Net Carryover + Leases + Storage + Increased Extraction.

<sup>7</sup> Amount pumped column does not include storage withdrawals (Table 4), which totaled zero for AY 2022-2023.

<sup>8</sup> Balance = Total Rights - Amount Pumped

<sup>9</sup> Drought = drought carryover created in 1991.

<sup>10</sup> Negative One-Year Carryover will be deducted from the subsequent year's AR.

Table 2 – Storage Accounting

Party	Carryover from 2021- 2022		2022-2023 Storage Activity								
			Transfers		Water Extracted		Water put into Storage		Balance		
	ISA <sup>1</sup>	CSP <sup>2</sup>	ISA	CSP	ISA	CSP	ISA	CSP	ISA	CSP	Total
Golden State Water Company	3,000.90	299.10	-	-	-	-	-	-	3,000.90	299.10	3,300.00
Manhattan Beach, City of	452.48	1,809.92	-	-	-	-	-	-	452.48	1,809.92	2,262.40
Torrance, City of	2,255.54	9,021.66	-	-	-	-	-	-	2,255.54	9,021.66	11,277.20
<b>Total</b>	<b>5,708.92</b>	<b>11,130.68</b>	-	-	-	-	-	-	<b>5,708.92</b>	<b>11,130.68</b>	<b>16,839.60</b>

---

<sup>1</sup> Individual Storage Account.

<sup>2</sup> Community Storage Pool.

Table 3 - Water Put into Storage

Party	Quantity (acre-feet)	ISA <sup>1</sup>	CSP <sup>2</sup>	Storage Method <sup>3</sup>	Date
There were no storage transactions in the 2022-2023 AY.					

Table 4 - Water Extracted from Storage

Party	Quantity (acre-feet)	Storage Account	Date
No stored water was extracted in the 2022-2023 AY.			

Table 5 - Storage Transfers

Party	Quantity (acre-feet)	Storage Account	Date
No stored water was transferred in the 2022-2023 AY.			

---

<sup>1</sup> ISA = Individual Storage Account

<sup>2</sup> CSP = Community Storage Pool

<sup>3</sup> CC = Carryover Conversion

Table 6 – Historical Storage Summary

Year	Water Put Into Storage Transfers			Water Extracted From Storage			Storage Balance			Available Adjudicated Storage Capacity		
	ISA <sup>1</sup>	CSP <sup>2</sup>	Total	ISA	CSP	Total	ISA	CSP	Total	ISA	CSP	Total
2014-15	1,097.77	0.00	1,097.77	0.00	0.00	0.00	1,097.77	0.00	1,097.77	24,702.23	35,500.00	60,202.23
2015-16	1,157.77	1,917.16	3,074.93	0.00	0.00	0.00	2,255.54	1,917.16	4,172.70	23,544.46	33,582.84	57,127.30
2016-17	3,000.90	1,765.10	4,766.00	0.00	0.00	0.00	5,256.44	3,682.26	8,938.70	20,543.56	31,817.74	52,361.30
2017-18	452.48	2,756.42	3,208.90	0.00	0.00	0.00	5,708.92	6,438.68	12,147.60	20,091.08	29,061.32	49,152.40
2018-19	0.00	1,127.70	1,127.70	0.00	0.00	0.00	5,708.92	7,566.38	13,275.30	20,091.08	27,933.62	48,024.70
2019-20	0.00	1,308.90	1,308.90	0.00	0.00	0.00	5,708.92	8,875.28	14,584.20	20,091.08	26,624.72	46,715.80
2020-21	0.00	1,127.70	1,127.70	0.00	0.00	0.00	5,708.92	10,002.98	15,711.90	20,091.08	25,497.02	45,588.10
2021-22	0.00	1,127.70	1,127.70	0.00	0.00	0.00	5,708.92	11,130.68	16,839.60	20,091.08	24,369.32	44,460.40
2022-23	0.00	0.00	0.00	0.00	0.00	0.00	5,708.92	11,130.68	16,839.60	20,091.08	24,369.32	44,460.40

Table 7 – Over-extractions

Party	AR	Carryover and/or Stored Water	Max Allowable Extraction <sup>3</sup>	Total Rights <sup>4</sup>	Amount Pumped	Overextraction <sup>5</sup>	Judgment Violation?
Pacific Crest Cemetery	0.00 <sup>6</sup>	No	33.91	31.91	35.83	-3.92	Yes
<b>Total</b>						<b>-3.92</b>	

<sup>1</sup> ISA = Individual Storage Account

<sup>2</sup> CSP = Community Storage Pool

<sup>3</sup> Max Allowable Extraction: if a Party has carryover or stored water, they are allowed to extract up to 120% of AR +/- leases and not be in violation of the Judgment; if they do not have carryover and/or stored water, they are allowed to over-extract 10% of AR +/- leases or 2 af AR, whichever is greater.

<sup>4</sup> Total Rights= AR + carryover + leases + storage

<sup>5</sup> Overextraction= Total Rights - Amount Pumped

<sup>6</sup> Pacific Crest Cemetery sold 39.40 af of AR (Table 11), they had a negative 8.09 from 2021-2022, and leased in 40 af of rights (Table 10).

Table 8 - Non-Consumptive Water Use Permits

Party	WRD Resolution No.	Description	2022-2023 Extraction <sup>1</sup>
Montrose Chemical Corporation <sup>2</sup>	23-1203	Allowed to extract 1,300 AF per year during the period of July 1, 2012 through June 30, 2063. Exempt from the Replenishment Assessment from October 31, 2022 through October 31, 2027.	-1.37
Shell Oil	23-1208	Allowed to extract 241.00 AF per year during the period of July 1, 2023 through June 30, 2028.	103.58
<b>Total</b>			<b>102.21</b>

Table 9 - Extractions by Non-Parties

Non-Party	Amount Pumped (acre-feet)
No extractions by Non-Parties in the 2022-2023 AY.	

<sup>1</sup> Negative numbers indicate net re-injection of treated water.

<sup>2</sup> DWR issued Montrose Chemical Corporation the Non-Consumptive Water Use Permit on November 14, 2012.



Table 10 – Leases (acre-feet)

Party	Transaction Type <sup>1</sup>	Amount	Recordation Date	Party	Net Amount
California Water Service Company	With Flex	-40.00	01/25/23	TO Pacific Crest Cemetery	-40.00
California Water Service Company (Hawthorne)	With Flex	1,882.00	02/01/13	FROM Hawthorne City of	1,882.00
Hawthorne City of	With Flex	-1,882.00	02/01/13	TO California Water Service Company (Hawthorne)	-1,882.00
Hollywood Park Land Company LLC	With Flex	-282.00	06/23/22	TO Inglewood, City of	-282.00
Inglewood, City of	With Flex	282.00	06/23/22	FROM Hollywood Park Land Company LLC	282.00
Lomita, City of	With Flex	-150.00	08/15/23	TO Roman Catholic Archbishop of Los Angeles	-150.00
Long Beach, City of	No Flex	40.00	04/27/23	FROM Manhattan Beach, City	40.00
Manhattan Beach, City of	No Flex	-40.00	04/27/23	TO Long Beach, City	-40.00
Myron Z Chlavin & Nettie Desser Trust & JHD Properties LLC	With Flex	12.10	01/24/23	FROM Susan Engelsma Trust	12.10
Pacific Crest Cemetery	With Flex	40.00	01/25/23	FROM California Water Service Company	40.00
Roman Catholic Archbishop of Los Angeles	With Flex	150.00	08/15/23	FROM Lomita, City of	150.00
Shell Oil Company	With Flex	-1,019.50	09/20/22	TO Tesoro Refining and Marketing Company	-1,019.50
Susan Engelsma Trust	With Flex	-12.10	01/24/23	TO Myron Z Chlavin & Nettie Desser Trust & JHD Properties LLC	-12.10
Tesoro Refining and Marketing Company	With Flex	1,019.50	09/20/22	FROM Shell Oil Company	1,019.50
<b>Total Leased Volume</b>		<b>3,425.60</b>			

<sup>1</sup> Leases with flexibility or “flex” transfers both the pumping right and associated carryover rights to the lessee, meaning if the party who leases in the rights “with flex” is allowed to carryover into the next AY any unused rights from the lease under the terms of the Judgment.

Table 11 - Permanent Transfers (acre-feet)

Party	Transaction Type	Amount	Recordation Date	Party	Net Amount
Pacific Crest Cemetery Company	Sale	-39.40	6/7/2023	SCI California Funeral Services Inc	-39.40
SCI California Funeral Services Inc	Sale	39.40	6/7/2023	Pacific Crest Cemetery Company	39.40
<b>Total Change of Ownership</b>		<b>39.40</b>			

Table 12 - Exchange Pool

Party	AR	Required Offer	Actual Offer	Amount Sold	Payment Due Exchanger
No requests for the Exchange Pool Program in the 2022-2023 AY.					

Table 13 - Extraction Wells Completed

Party	Recordation No.	State Well No.	Owner Designation
Tesoro Refining & Marketing Company LLC	204029	4S/13W-27L05S	18

Table 14 - Extraction Wells Destroyed

Party	Recordation No.	State Well No.	Owner Designation
No extraction wells reported destroyed in the 2022-2023 AY.			

### Table 15 - Replenishment Operations

Water spread in the Montebello Forebay area of the Central Basin provides subsurface recharge to the West Coast Basin.

Source of Water	Quantity (acre-feet)	
	2021- 2022	2022-2023
Local Runoff	23,816	174,411
Recycled Water:		
Whittier Narrows Water Reclamation Plant	7,471	8,401
San Jose Water Reclamation Plant	43,746	32,714
Pomona Water Reclamation Plant	3,397	3,458
Advanced Treated Water:		
Albert Robles Center Advanced Water Treatment Plant	11,616	5,059
MWD untreated Tier 1 water purchased by WRD	0	0
Make-up water from Upper San Gabriel Basin	0	0
<b>Total</b>	<b>90,046</b>	<b>224,043</b>

Table 16 - WRD In-Lieu Recharge

Party	In-Lieu Amount (acre-feet)
No in-lieu recharge in the 2022-2023 AY.	

Table 17 - Imported Water Use

Source of Water	Party/Entity	Quantity (acre-feet)	
		2021- 2022	2022-2023
Colorado River and State Water Project	Long Beach, City of <sup>1</sup>	22,762	18,735
Colorado River and State Water Project	<b>West Basin Municipal Water District:</b>		
	California American Water Company	844	1,017
	California Water Service Company <sup>2</sup>	9,330	8,731
	California Water Service Company (Dominguez)	21,797	19,825
	California Water Service Company (Hawthorne Lease)	3,631	3,241
	El Segundo, City of	7,938	6,214
	Golden State Water Company	16,375	13,020
	Inglewood, City of	6,495	5,913
	Lomita, City of	1,986	1,812
	Manhattan Beach, City of	4,443	3,766
	<b>West Basin MWD Subtotal</b>	<b>72,839</b>	<b>63,539</b>
Colorado River and State Water Project	Torrance, City of	13,993	14,346
Owens River-Mono Basin, Colorado River, and State Water Project	Los Angeles, City of	28,835	25,441
Central Basin Groundwater	California-American Water Company	2,040	1,590
<b>Total Imported Water</b>		<b>140,469</b>	<b>123,651</b>

<sup>1</sup> The Values of imported water for the City of Long Beach are the same in the Central Basin.

<sup>2</sup> Excludes acre-feet of imported water that was exported to Palos Verdes.

Table 18 – Recycled Water Use

Source of Water	Party/Entity	Quantity (acre-feet) <sup>1</sup>	
		2021- 2022	2022-2023
West Basin Municipal Water District:	California Water Service Company	227	192
	California Water Service Company (Hawthorne Lease)	111	75
	California Water Service Company (Dominguez)	4,170	5,692
	El Segundo, City of	9,574	9,106
	Golden State Water Company	423	317
	Inglewood, City of	743	502
	Los Angeles, City of	1,246	1,049
	Manhattan Beach, City of	275	273
	Torrance, City of	5,082	5,053
<b>Total Recycled Water</b>		<b>21,851</b>	<b>22,259</b>

Table 19 – Seawater Intrusion Barrier Project Operations

Provisional data provided by the Los Angeles County Department of Public Works.

Source of Water	Quantity (acre-feet)	
	2021- 2022	2022-2023
West Coast Basin Barrier		
Imported Water Injection	9,212	4,829
Recycled Water Injection	1,665	7,274
Dominguez Gap Barrier		
Imported Water Injection	3,450	2,338
Recycled Water Injection	4,819	4,262
<b>Total</b>	<b>19,146</b>	<b>18,703</b>

<sup>1</sup> Excludes recycled water used for groundwater recharge.

Table 20 – Apportionment of Budget Among Rights Holders

Party	AR (acre-feet)	Water Rights Panel	Administrative Body	Total Amount Billed
A B C Nursery Inc.	24.10	\$24.10	\$70.25	\$94.35
Honeywell International Inc.	22.50	\$22.50	\$66.91	\$89.41
Asahi Fancy Koi Inc.	2.00	\$2.00	\$24.17	\$26.17
Automation Industries Inc.	0.70	\$0.70	\$21.46	\$22.16
CBS Inc.	9.50	\$9.50	\$39.81	\$49.31
California Water Service Company - Hermosa / Redondo	4,070.00	\$4,070.00	\$8,505.87	\$12,575.87
California Water Service Company - Dominquez	10,417.45	\$10,417.45	\$21,740.17	\$32,157.62
Carson Harbor Village Mobile Home Park	7.00	\$7.00	\$34.59	\$41.59
Carson-Madrona Company #3 Del Amo	104.00	\$104.00	\$236.84	\$340.84
Century Builders	4.70	\$4.70	\$29.80	\$34.50
Chandler Palos Verdes Sand & Gravel Company	4.20	\$4.20	\$28.76	\$32.96
Chevron U.S.A. Inc.	4,601.30	\$4,601.30	\$9,613.62	\$14,214.92
Coastline Church of Christ	0.70	\$0.70	\$21.46	\$22.16
Phillips 66 Company	6,170.00	\$6,170.00	\$12,884.33	\$19,054.33
Curtis, Owen	0.36	\$0.36	\$20.75	\$21.11
Estate of Golda Delaney	4.10	\$4.10	\$28.55	\$32.65
El Segundo, City of	953.00	\$953.00	\$2,006.99	\$2,959.99
Susan Engelsma Trust	12.10	\$12.10	\$45.23	\$57.33
Evergreen America Corporation	5.40	\$5.40	\$31.26	\$36.66
Fujimoto, S R & S T & J K	20.00	\$20.00	\$61.70	\$81.70
Gillingham, Florence R, et al	2.40	\$2.40	\$25.00	\$27.40
Golden State Water Company	7,502.24	\$7,502.24	\$15,662.02	\$23,164.26
Hawthorne, City of (California Water Service Co.)	1,882.00	\$1,882.00	\$3,943.93	\$5,825.93
Hillside Memorial Park	104.10	\$104.10	\$237.05	\$341.15
Hollywood Park Land Company, LLC	282.00	\$282.00	\$607.96	\$889.96
Honold, Kristin Brandsma	11.80	\$11.80	\$44.60	\$56.40
Inglewood, City of	4,449.89	\$4,449.89	\$9,297.93	\$13,747.82
Kinder Morgan Liquids Terminals, LLC	167.00	\$167.00	\$368.19	\$535.19
Estate of Emma L. Leuzinger	1.40	\$1.40	\$22.92	\$24.32
Lockheed Martin	0.10	\$0.10	\$20.21	\$20.31
Long Beach, City of	0.70	\$0.70	\$21.46	\$22.16
Frank Lopes	3.70	\$3.70	\$27.71	\$31.41
Los Angeles Department of Water and Power, City of	1,503.00	\$1,503.00	\$3,153.72	\$4,656.72
Los Angeles County Recreation Facilities	363.70	\$363.70	\$778.31	\$1,142.01
Los Angeles County Sanitation District No. 2	102.00	\$102.00	\$232.67	\$334.67
Lomita Water System, City of	1,352.00	\$1,352.00	\$2,838.89	\$4,190.89
Loyola Marymount University	48.10	\$48.10	\$120.29	\$168.39
Manhattan Beach, City of	1,131.20	\$1,131.20	\$2,378.53	\$3,509.73
McDonnell Douglas Corporation	1.70	\$1.70	\$23.54	\$25.24
Torrance Refining Company LLC	2,596.40	\$2,596.40	\$5,433.44	\$8,029.84
Montrose Chemical Corporation of California	1.20	\$1.20	\$22.50	\$23.70
Roy H. and Kenji Mori	3.60	\$3.60	\$27.51	\$31.11
Northrop Corporation	38.15	\$38.15	\$99.54	\$137.69
Nozaki, Sumikichi	7.00	\$7.00	\$34.59	\$41.59
Pacific Crest Cemetery Company	39.40	\$39.40	\$102.15	\$141.55
Josephine P. Rehor	2.20	\$2.20	\$24.59	\$26.79

Party	AR (acre-feet)	Water Rights Panel	Administrative Body	Total Amount Billed
Eco Services Operations LLC	521.00	\$521.00	\$1,106.27	\$1,627.27
Rolling Hills Country Club	290.00	\$290.00	\$624.64	\$914.64
Roman Catholic Archbishop of Los Angeles	72.30	\$72.30	\$170.74	\$243.04
Shell Oil Company	1,019.50	\$1,019.50	\$2,145.64	\$3,165.14
Southern California Edison Company	57.10	\$57.10	\$139.05	\$196.15
Tesoro Refining & Marketing Company LLC	8,741.00	\$8,741.00	\$18,244.81	\$26,985.81
Torrance, City of	5,638.86	\$5,638.86	\$11,776.91	\$17,415.77
Vukelich, Mike, Jr.	10.00	\$10.00	\$40.85	\$50.85
Watson Land Company	80.20	\$80.20	\$187.22	\$267.42
Wiseburn School District	8.20	\$8.20	\$37.10	\$45.30
<b>Total</b>	<b>64,468.25</b>	<b>\$64,468.25</b>	<b>\$135,535</b>	<b>\$200,003</b>



Figure 1 - West Coast Basin  
(showing groundwater production)

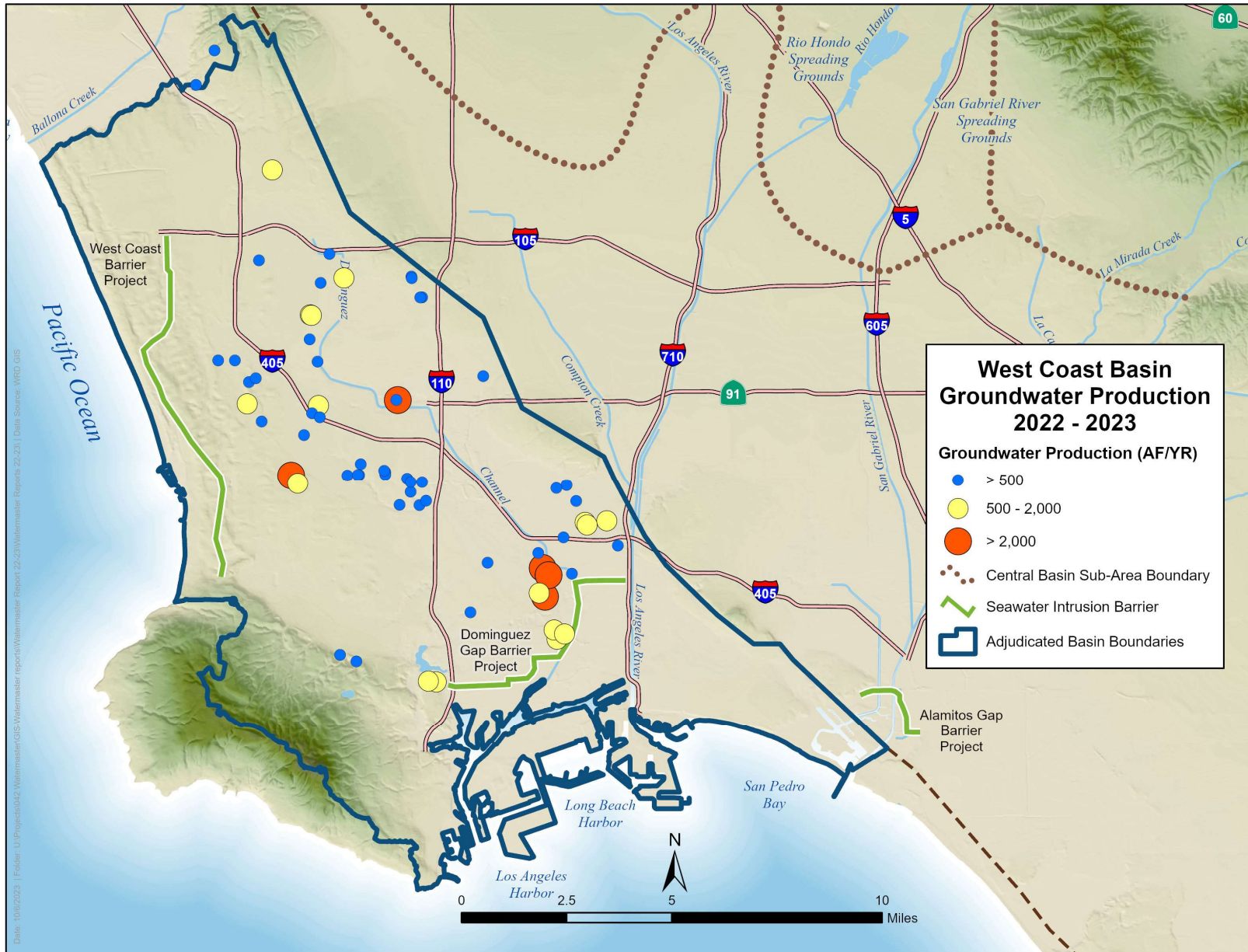


Figure 2 - Monthly Water Production  
(excludes non-consumptive use)

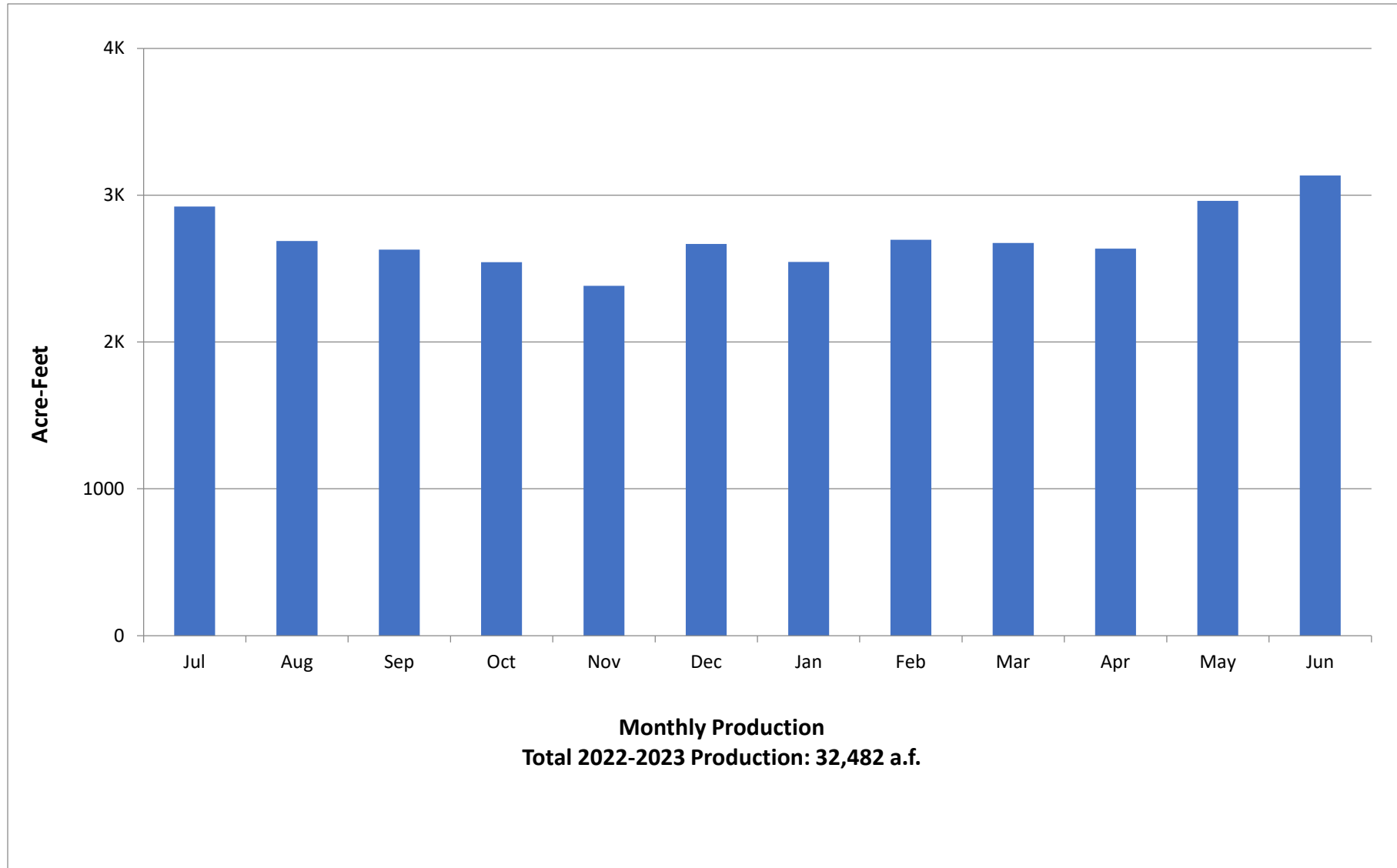


Figure 3 - West Coast Basin  
(showing key wells and facilities)



Figure 4 - Monthly Average Precipitation

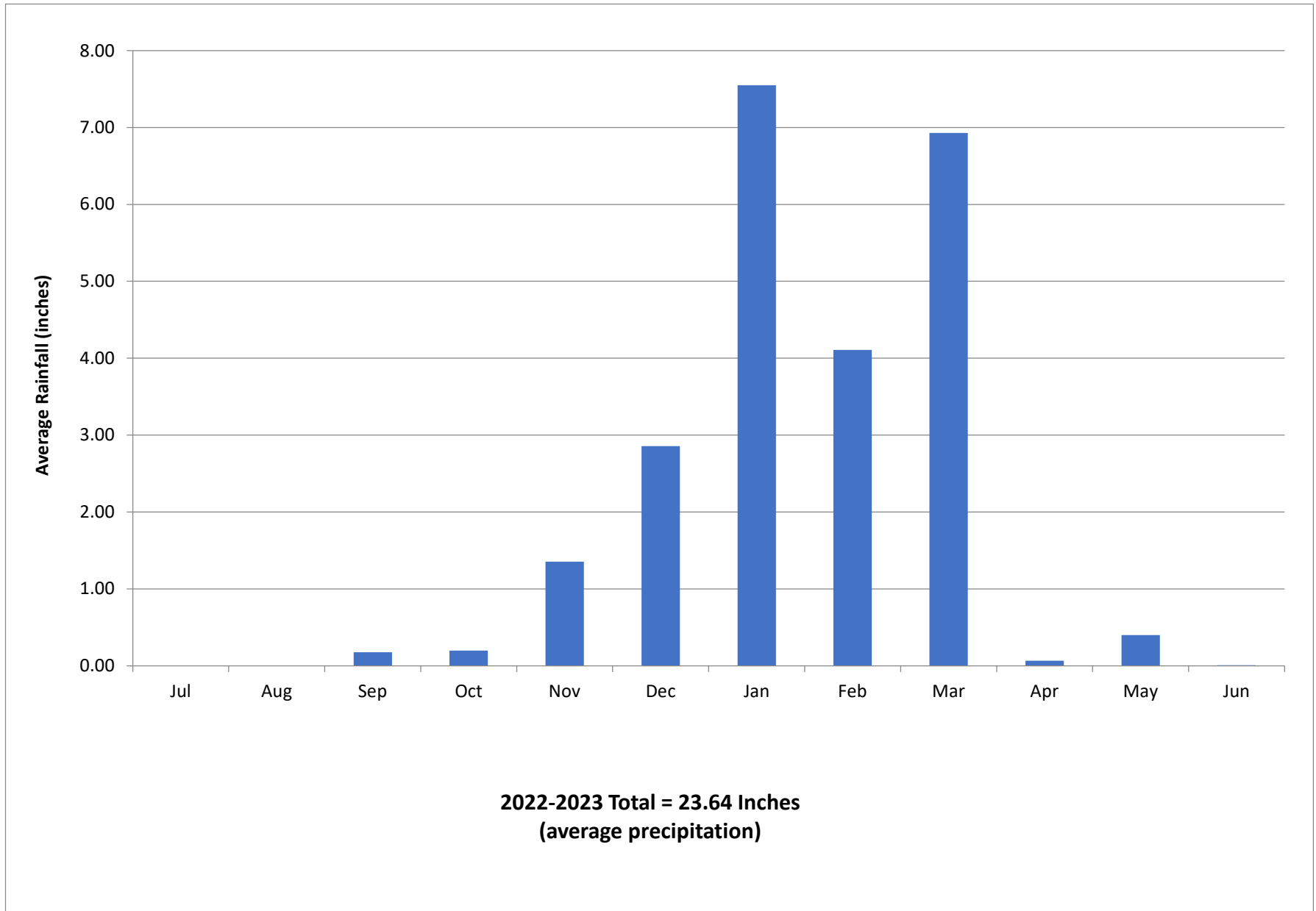


Figure 5 - Total Water Use  
(Excludes Groundwater Recharge)

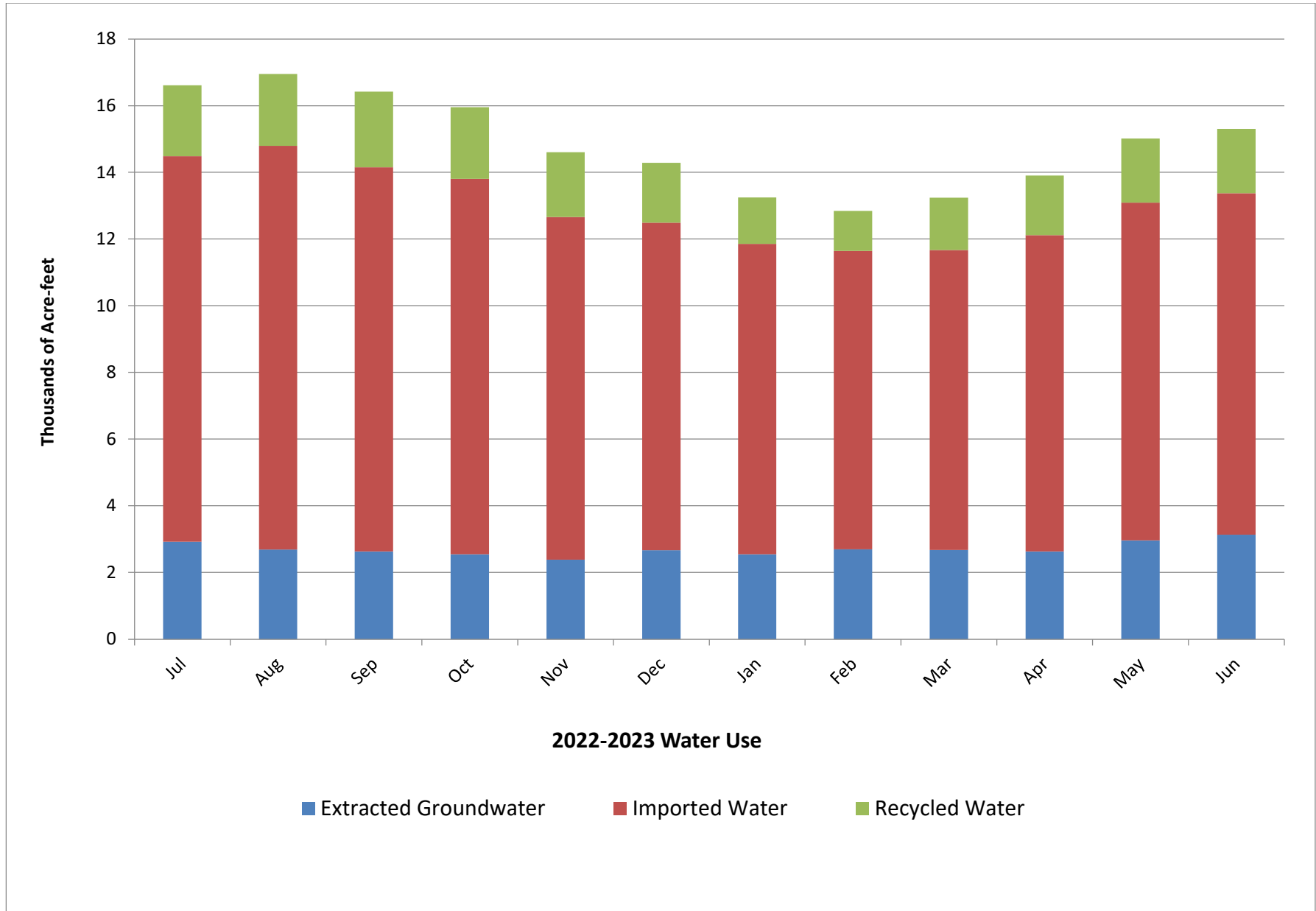
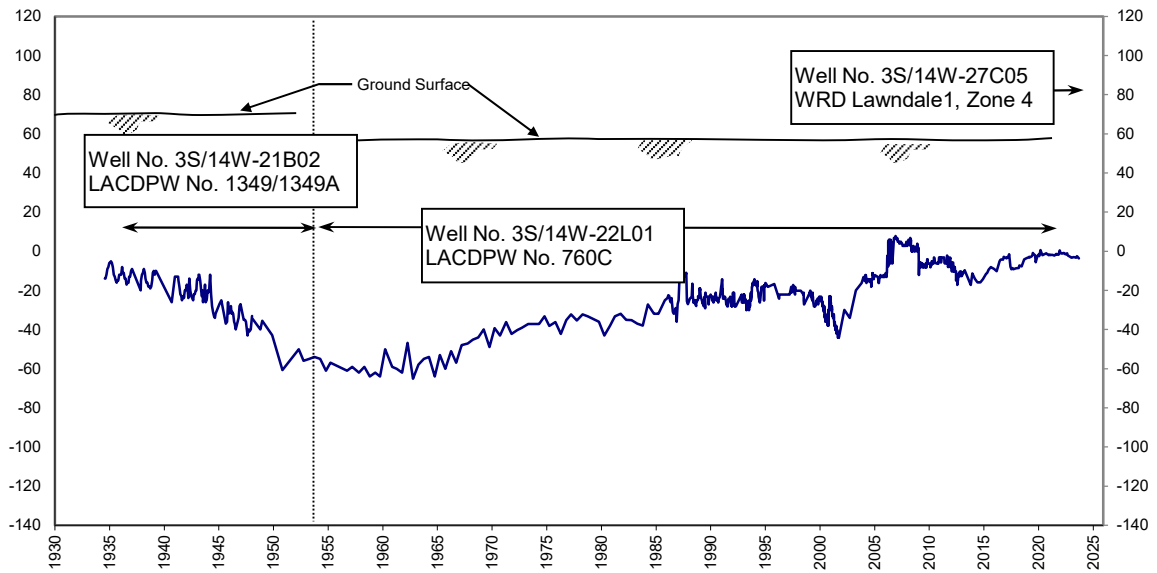
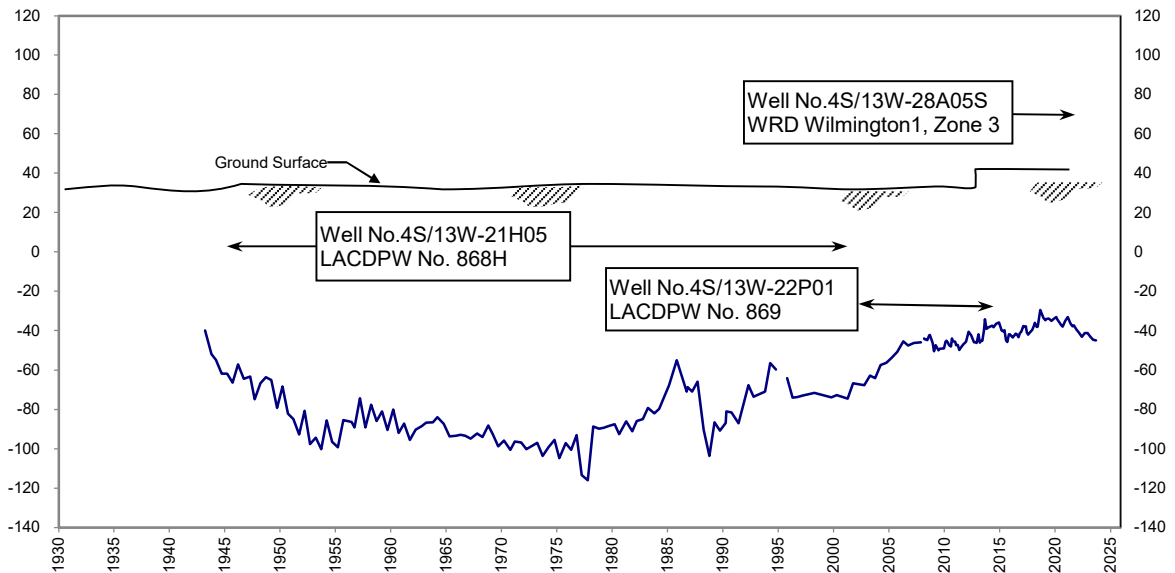


Figure 6 - Water Level Hydrographs

Lawndale1 Key Well



Wilmington1 Key Well



See Figure 3 for well locations.

X-Axis: Year

Y-Axis: Groundwater Elevation (feet mean sea level)

# Appendix A

## Groundwater Extractions

July 2022- June 2023



## Appendix A - Groundwater Extractions (acre-feet)

7002 - ABC Nursery, Inc.	JUL	AUG	SEPT	OCT	NOV	DEC	JAN	FEB	MAR	APR	MAY	JUN	TOTAL
<b>SWN/Owner No.</b>	3.00	2.00	1.00	0.50	0.50	0.50	0.50	0.50	0.50	0.00	0.00	0.00	9.00
003S013W29F011S/1	3.00	2.00	1.00	0.50	0.50	0.50	0.50	0.50	0.50	0.00	0.00	0.00	9.00

7052 - California Water Service Co./Hawthorne Lease	JUL	AUG	SEPT	OCT	NOV	DEC	JAN	FEB	MAR	APR	MAY	JUN	TOTAL
<b>SWN/Owner No.</b>	9.88	75.47	72.72	68.72	6.32	0.00	0.00	0.00	0.00	0.00	30.04	84.54	347.69
3S/14W-09M01S/13	9.88	75.47	72.72	68.72	6.32	0.00	0.00	0.00	0.00	0.00	30.04	84.54	347.69

7050 - California Water Service Company	JUL	AUG	SEPT	OCT	NOV	DEC	JAN	FEB	MAR	APR	MAY	JUN	TOTAL
<b>SWN/Owner No.</b>	90.41	77.31	65.92	64.41	5.22	88.79	86.39	68.52	80.16	84.11	84.62	93.68	889.54
003S014W29H001S	0.02	0.00	0.09	0.31	0.80	0.00	0.67	0.65	0.00	1.33	0.76	0.01	4.64
003S014W29J001S	0.89	0.87	1.06	0.64	1.10	16.97	0.87	0.54	1.51	2.09	0.84	0.93	28.31
003S014W32A002S	89.50	76.44	64.77	63.46	3.32	71.82	84.85	67.33	78.65	80.69	83.02	92.74	856.59

7053 - California Water Service Company (Dominguez)	JUL	AUG	SEPT	OCT	NOV	DEC	JAN	FEB	MAR	APR	MAY	JUN	TOTAL
<b>SWN/Owner No.</b>	494.75	234.25	285.31	178.91	121.90	199.96	179.53	388.41	476.69	496.49	485.53	433.93	3,975.66
004S013W11P002S	208.90	0.00	205.18	105.66	53.54	99.66	69.94	75.11	98.12	99.46	102.93	92.33	1,210.83
004S013W15A011S	70.21	68.92	59.47	70.75	68.36	99.09	101.38	97.19	104.41	107.19	76.53	35.22	958.72
004S013W15A014S	183.94	134.79	0.00	2.50	0.00	0.88	0.56	139.29	181.91	185.98	188.04	188.74	1,206.63
004S013W15F001S	31.70	30.54	20.66	0.00	0.00	0.00	0.00	0.10	0.29	18.03	32.07	31.64	165.03
004S013W20C001S	0.00	0.00	0.00	0.00	0.00	0.32	7.65	76.72	91.96	85.83	85.96	86.00	434.44
004S013W29E006S	0.00	0.00	0.00	0.00	0.00	0.01	0.00	0.00	0.00	0.00	0.00	0.00	0.01

7623 - Eco Services Operations, LLC	JUL	AUG	SEPT	OCT	NOV	DEC	JAN	FEB	MAR	APR	MAY	JUN	TOTAL
<b>SWN/Owner No.</b>	42.50	20.94	39.10	28.12	24.09	20.93	17.09	39.90	15.97	43.70	21.20	29.20	342.74
004S013W10C004S/2	42.50	20.94	39.10	28.12	24.09	20.93	17.09	39.90	15.97	43.70	21.20	29.20	342.74



## Appendix A - Groundwater Extractions (Continued)

7226 - Golden State Water Company	JUL	AUG	SEPT	OCT	NOV	DEC	JAN	FEB	MAR	APR	MAY	JUN	TOTAL
<b>SWN/Owner No.</b>	462.94	341.44	316.47	294.10	521.90	613.72	672.04	602.76	378.22	484.72	701.01	885.23	6,274.55
003S014W13B003S/BA004	1.19	0.04	0.05	0.09	0.00	0.03	3.37	0.00	0.08	0.00	0.00	3.50	8.35
003S014W13B004S/BA005	0.45	2.06	2.11	0.03	0.00	0.10	4.10	0.00	0.10	0.00	0.00	4.82	13.77
003S014W13J009S/S0005	0.00	0.00	0.00	0.00	5.47	0.00	0.57	1.96	35.34	0.00	10.06	133.04	186.44
003S014W13J010S/S0006	0.48	0.09	0.00	0.20	0.02	0.00	0.21	110.56	15.67	0.00	6.33	78.03	211.59
003S014W14D002S/129-02	143.50	9.81	0.00	0.00	83.69	89.93	144.54	130.87	76.80	96.53	138.77	139.39	1,053.83
003S014W15B003S	0.14	0.70	0.00	0.00	0.00	79.68	47.55	0.21	0.16	0.26	0.00	0.70	129.40
003S014W15P001S/Doty1	0.13	0.29	2.99	0.07	63.73	55.89	88.70	78.81	45.76	55.05	87.06	83.66	562.14
003S014W15P002S/Doty2	0.19	0.45	4.80	0.00	92.38	83.69	133.35	117.78	69.96	85.12	132.88	130.21	850.81
003S014W22L001S/CD001	0.03	0.00	0.02	0.23	0.00	0.00	0.16	0.13	0.18	0.00	0.07	0.06	0.88
003S014W25P004S/DA001	0.05	0.00	0.00	0.00	0.00	0.00	0.00	0.00	0.00	0.12	3.95	0.14	4.26
003S014W25P006S/DA002	316.78	328.00	306.50	293.48	276.61	304.40	249.49	162.44	134.17	247.64	321.89	311.68	3,253.08
<b>7270 - Hillside Memorial Park</b>	<b>JUL</b>	<b>AUG</b>	<b>SEPT</b>	<b>OCT</b>	<b>NOV</b>	<b>DEC</b>	<b>JAN</b>	<b>FEB</b>	<b>MAR</b>	<b>APR</b>	<b>MAY</b>	<b>JUN</b>	<b>TOTAL</b>
<b>SWN/Owner No.</b>	22.75	17.88	11.13	12.38	6.52	2.65	0.00	5.97	0.00	11.91	9.73	15.43	116.35
002S014W19K004S/3	22.75	17.88	11.13	12.38	6.52	2.65	0.00	5.97	0.00	11.91	9.73	15.43	116.35
<b>7310 - Inglewood, City of</b>	<b>JUL</b>	<b>AUG</b>	<b>SEPT</b>	<b>OCT</b>	<b>NOV</b>	<b>DEC</b>	<b>JAN</b>	<b>FEB</b>	<b>MAR</b>	<b>APR</b>	<b>MAY</b>	<b>JUN</b>	<b>TOTAL</b>
<b>SWN/Owner No.</b>	143.99	151.23	137.01	152.41	169.33	172.86	168.19	152.95	158.97	151.98	155.47	136.87	1,851.26
002S014W33F001S/Well	143.99	151.23	137.01	138.72	137.45	142.70	140.81	125.01	131.15	125.08	129.51	114.29	1,616.95
003S014W10G004S/2	0.00	0.00	0.00	13.69	31.88	30.16	27.38	27.94	27.82	26.90	25.96	22.58	234.31
<b>7364 - Kinder Morgan Liquids Terminals LLC</b>	<b>JUL</b>	<b>AUG</b>	<b>SEPT</b>	<b>OCT</b>	<b>NOV</b>	<b>DEC</b>	<b>JAN</b>	<b>FEB</b>	<b>MAR</b>	<b>APR</b>	<b>MAY</b>	<b>JUN</b>	<b>TOTAL</b>
<b>SWN/Owner No.</b>	3.11	3.54	2.28	4.03	3.31	2.87	2.00	2.94	2.85	3.22	3.33	4.86	38.34
REMED	3.11	3.54	2.28	4.03	3.31	2.87	2.00	2.94	2.85	3.22	3.33	4.86	38.34

Appendix A - Groundwater Extractions Continued

7390 - Long Beach, City of	JUL	AUG	SEPT	OCT	NOV	DEC	JAN	FEB	MAR	APR	MAY	JUN	TOTAL
<b>SWN/Owner No.</b>	0.00	0.00	0.00	0.00	0.00	0.00	0.00	0.00	0.00	0.00	0.00	20.50	20.50
004S013W14K011S/1	0.00	0.00	0.00	0.00	0.00	0.00	0.00	0.00	0.00	0.00	0.00	20.50	20.50

7435 - Los Angeles County Department of Parks & Recreation	JUL	AUG	SEPT	OCT	NOV	DEC	JAN	FEB	MAR	APR	MAY	JUN	TOTAL
<b>SWN/Owner No.</b>	47.45	46.66	53.75	16.82	19.39	14.15	0.00	9.49	0.07	0.00	0.00	0.00	207.78
003S014W27C001S/00761	47.45	46.66	53.75	16.82	19.39	14.15	0.00	9.49	0.07	0.00	0.00	0.00	207.78

7490 - Manhattan Beach, City of	JUL	AUG	SEPT	OCT	NOV	DEC	JAN	FEB	MAR	APR	MAY	JUN	TOTAL
<b>SWN/Owner No.</b>	14.31	57.16	75.65	79.13	1.27	4.75	15.14	58.17	38.13	40.67	59.29	45.89	489.56
003S014W29C003S/15	0.10	0.00	0.00	0.00	1.06	0.00	1.56	29.81	0.00	0.00	0.00	0.00	32.53
003S014W29D005S/11-A	14.21	57.16	75.65	79.13	0.21	4.75	13.58	28.36	38.13	40.67	59.29	45.89	457.03

7514 - Montrose Chemical Corp.	JUL	AUG	SEPT	OCT	NOV	DEC	JAN	FEB	MAR	APR	MAY	JUN	TOTAL
<b>SWN/Owner No.</b>	-0.24	0.16	-0.43	0.00	0.00	0.00	-0.17	-0.10	-0.26	0.00	0.00	-0.33	-1.37
004S014W01N002S/G-IW-1	-0.09	-6.68	-7.77	0.00	0.00	0.00	0.00	0.00	0.00	0.00	0.00	0.00	-14.54
004S014W01N003S/G-IW-3	-0.09	-8.19	-8.47	0.00	0.00	0.00	0.00	0.00	0.00	0.00	0.00	0.00	-16.75
004S014W01N004S/G-IW-7	-0.06	-5.79	-6.69	0.00	0.00	0.00	0.00	0.00	0.00	0.00	0.00	0.00	-12.54
004S014W01P002S/UBAEW1	0.00	0.20	0.22	0.00	0.00	0.00	0.00	0.00	0.00	0.00	0.00	0.00	0.42
004S014W12A001S/G-IW-2	0.00	0.00	0.00	0.00	0.00	0.00	-0.17	-0.10	-0.26	0.00	0.00	-0.33	-0.86
004S014W12B002S/UBAEW3	0.00	0.00	0.35	0.00	0.00	0.00	0.00	0.00	0.00	0.00	0.00	0.00	0.35
004S014W12B005S/BF-EW-1	0.00	0.96	1.04	0.00	0.00	0.00	0.00	0.00	0.00	0.00	0.00	0.00	2.00
004S014W12B006S/G-EW-1	0.00	7.02	7.62	0.00	0.00	0.00	0.00	0.00	0.00	0.00	0.00	0.00	14.64
004S014W12G001S/BF-EW-3	0.00	3.21	3.37	0.00	0.00	0.00	0.00	0.00	0.00	0.00	0.00	0.00	6.58
004S014W12J002S/BF-EW-4	0.00	6.02	6.32	0.00	0.00	0.00	0.00	0.00	0.00	0.00	0.00	0.00	12.34
004S014W12J003S/G-EW-2	0.00	1.81	1.90	0.00	0.00	0.00	0.00	0.00	0.00	0.00	0.00	0.00	3.71
004S014W12L001S/G-EW-3	0.00	1.60	1.68	0.00	0.00	0.00	0.00	0.00	0.00	0.00	0.00	0.00	3.28

## Appendix A - Groundwater Extractions Continued

7580 - Pacific Crest Cemetery Company	JUL	AUG	SEPT	OCT	NOV	DEC	JAN	FEB	MAR	APR	MAY	JUN	TOTAL
<b>SWN/Owner No.</b>	6.37	6.35	4.84	3.94	0.23	2.18	1.49	1.67	0.33	1.52	2.78	4.13	35.83
003S014W33E001S	6.37	6.35	4.84	3.94	0.23	2.18	1.49	1.67	0.33	1.52	2.78	4.13	35.83

7093 - Phillips 66 Company	JUL	AUG	SEPT	OCT	NOV	DEC	JAN	FEB	MAR	APR	MAY	JUN	TOTAL
<b>SWN/Owner No.</b>	489.53	509.28	408.14	401.18	378.01	491.81	448.83	441.06	330.01	281.07	390.54	396.03	4,965.49
004S013W21J003S/5	65.84	62.31	57.57	56.41	50.68	48.84	43.62	34.78	41.58	39.20	39.29	37.42	577.54
004S013W21R011S/CBP Well	261.92	290.98	288.24	282.80	265.86	286.48	257.41	257.91	222.03	234.93	274.78	257.94	3,181.28
004S013W31N004S/LA006	34.04	64.22	62.32	61.97	61.47	61.91	60.49	53.20	38.16	0.00	16.96	23.30	538.04
004S013W31P003S/7	127.73	91.77	0.01	0.00	0.00	94.58	87.31	95.17	28.24	6.94	59.51	77.37	668.63

7655 - Rolling Hills Country Club	JUL	AUG	SEPT	OCT	NOV	DEC	JAN	FEB	MAR	APR	MAY	JUN	TOTAL
<b>SWN/Owner No.</b>	64.00	29.00	31.00	8.00	4.00	0.00	0.00	4.00	5.00	8.00	16.00	30.00	199.00
004S014W34H002S/Lake Well 2	64.00	0.00	31.00	8.00	4.00	0.00	0.00	4.00	5.00	8.00	16.00	30.00	170.00
004S014W35F002S/PLANT	0.00	29.00	0.00	0.00	0.00	0.00	0.00	0.00	0.00	0.00	0.00	0.00	29.00

7659 - Roman Catholic Archbishop of Los Angeles	JUL	AUG	SEPT	OCT	NOV	DEC	JAN	FEB	MAR	APR	MAY	JUN	TOTAL
<b>SWN/Owner No.</b>	13.59	19.55	26.16	18.69	16.70	5.12	1.68	10.51	1.17	11.18	27.98	24.99	177.32
002S014W18J001S/AA	13.59	19.55	26.16	18.69	16.70	5.12	1.68	10.51	1.17	11.18	27.98	24.99	177.32

7701 - Shell Oil Co (NCWUP)	JUL	AUG	SEPT	OCT	NOV	DEC	JAN	FEB	MAR	APR	MAY	JUN	TOTAL
<b>SWN/Owner No.</b>	12.22	10.28	13.53	8.45	6.65	4.06	6.11	9.41	8.11	8.39	8.93	7.44	103.58
004S013W10E007S/DD-3	6.35	5.65	6.47	1.32	0.95	2.44	2.47	4.27	1.72	2.58	2.08	0.98	37.28
004S013W10K002S/DOM-GSP-R2M	5.87	4.63	7.06	7.13	5.70	1.62	3.64	5.14	6.39	5.81	6.85	6.46	66.30

## Appendix A - Groundwater Extractions (Continued)

7720 - Southern California Edison Co.	JUL	AUG	SEPT	OCT	NOV	DEC	JAN	FEB	MAR	APR	MAY	JUN	TOTAL
<b>SWN/Owner No.</b>	1.62	2.80	2.51	1.84	0.35	0.30	0.49	0.76	0.80	1.72	2.31	2.31	17.81
003S014W34N004S/SCECO	1.62	2.80	2.51	1.84	0.35	0.30	0.49	0.76	0.80	1.72	2.31	2.31	17.81

7807 - Tesoro Refining & Marketing Co., LLC	JUL	AUG	SEPT	OCT	NOV	DEC	JAN	FEB	MAR	APR	MAY	JUN	TOTAL
<b>SWN/Owner No.</b>	752.75	880.98	859.53	976.97	896.88	923.29	883.31	814.51	957.28	921.38	905.38	834.75	10,607.01
004S013W16J006S/WW-14	46.57	47.71	44.82	32.84	40.08	36.48	32.69	33.53	36.86	35.47	36.20	35.52	458.77
004S013W16R003S/Well 11	326.03	370.60	364.24	323.85	322.51	346.25	372.50	321.92	394.75	379.25	389.42	331.02	4,242.34
004S013W21H008S/Well 16	262.17	271.32	261.18	243.14	229.83	216.33	195.84	206.00	217.19	207.75	207.59	216.76	2,735.10
004S013W22F007S/SRP12	15.08	14.02	14.26	14.41	13.52	13.57	11.63	11.48	12.53	8.89	12.86	11.91	154.16
004S013W27L005S/18	0.00	0.00	0.00	181.74	143.47	147.96	127.63	112.39	26.94	0.00	0.00	0.00	740.13
004S013W27M006S	96.95	175.53	61.46	0.00	0.00	0.00	0.00	0.00	123.37	150.45	102.75	104.29	814.80
004S013W27N006S	0.00	0.00	106.87	167.25	139.44	156.41	139.06	122.39	136.40	131.82	145.83	124.81	1,370.28
009S099W99P099S/REMED	5.95	1.80	6.70	13.74	8.03	6.29	3.96	6.80	9.24	7.75	10.73	10.44	91.43

7510 - Torrance Refining Company LLC	JUL	AUG	SEPT	OCT	NOV	DEC	JAN	FEB	MAR	APR	MAY	JUN	TOTAL
<b>SWN/Owner No.</b>	90.57	84.47	88.09	70.07	52.58	79.98	69.16	82.20	91.32	88.87	72.02	85.64	954.97
004S014W02F001S/EW-5	22.66	3.58	26.66	17.64	9.68	32.65	33.28	31.70	35.34	34.70	26.97	29.58	304.44
004S014W02L002S/EW-3	17.08	24.87	16.35	10.37	5.62	16.40	13.35	20.47	23.00	22.38	18.97	20.86	209.72
004S014W02M004S/EW-1	28.78	28.96	24.26	28.93	28.93	27.76	22.53	30.03	32.98	31.79	26.08	31.21	342.24
004S014W02P001S/EW-02R	22.05	27.06	20.82	13.13	8.35	3.17	0.00	0.00	0.00	0.00	0.00	3.99	98.57

## Appendix A - Groundwater Extractions (Continued)

7850 - Torrance, City of	JUL	AUG	SEPT	OCT	NOV	DEC	JAN	FEB	MAR	APR	MAY	JUN	TOTAL
<b>SWN/Owner No.</b>	169.12	127.98	148.92	163.04	153.71	44.53	0.00	11.91	137.43	4.52	0.00	0.00	961.16
003S014W34C003S/9	169.12	127.98	148.92	163.04	153.71	44.53	0.00	11.91	54.10	1.08	0.00	0.00	874.39
003S014W34F005S/Well 10	0.00	0.00	0.00	0.00	0.00	0.00	0.00	0.00	70.51	0.82	0.00	0.00	71.33
003S014W34F006S/Well 11	0.00	0.00	0.00	0.00	0.00	0.00	0.00	0.00	12.82	2.62	0.00	0.00	15.44
7917 - Water Replenishment District	JUL	AUG	SEPT	OCT	NOV	DEC	JAN	FEB	MAR	APR	MAY	JUN	TOTAL
<b>SWN/Owner No.</b>	459.29	299.88	239.82	258.56	219.72	234.64	237.55	289.85	402.72	444.79	413.30	283.05	3,783.17
004S014W04R001S/Delthorne Park	295.04	251.57	239.82	258.56	219.72	234.64	237.55	209.92	268.76	284.76	226.57	164.51	2,891.42
004S014W04R002S/City Yard	164.25	48.31	0.00	0.00	0.00	0.00	0.00	79.93	133.96	160.03	186.73	118.54	891.75

# Appendix B

Successions of Adjudicated Rights

as of

June 2023

Appendix B – Succession of Adjudicated Rights  
June 2023 (acre-feet)

ABC NURSERY, INC			(NOW KNOWN AS BARCLAY HOLLANDER CORP)		
SUCCESSOR TO JENKINS, HARRY C	1.80		BARCLAY, RICHARD AND R A WATT		
SUCCESSOR TO TITLE, SIDNEY R AND CHARLOTTE W	13.60		SUCCESSORS TO EMMA J OSBORN	32.66	
SUCCESSOR TO VERBURG, WILLIAM AND CLARA B	6.70		SUCCESSORS IN PART TO ISABELA J GRANZ ESTATE	13.55	
SUCCESSOR IN PART TO UNITED CALIFORNIA BANK	2.00		SUCCESSORS IN PART TO GEORGE R MURDOCK SOLD TO CITY OF TORRANCE	13.75	
TOTAL		24.10	TOTAL	-59.96	0.00
ABELL, FRANK	1.80		BAUMAN, GUS A	0.00	
SOLD TO CITY OF INGLEWOOD	-1.80		TRANSFERRED TO PALOS VERDES BEGONIA FARM		
TOTAL		0.00	TOTAL		0.00
ALCAST FOUNDRY, ET AL	7.20		BEGO CORPORATION	4.10	
SOLD TO CITY OF TORRANCE	-7.20		SOLD TO ESTATE OF GOLDA DELANEY	-4.10	
TOTAL		0.00	TOTAL		0.00
ALLIED CHEMICAL CORP (SEE INDUSTRIAL CHEMICAL DIVISION, ALLIED CHEMICAL CORP)			BELVIDERE MUTUAL WATER CO	33.40	
ALLIED CORP (FORMERLY: ALLIED CHEMICAL CORP) (NOW KNOWN AS ALLIED-SIGNAL, INC [EL SEGUNDO OFFICE])			SOLD TO CITY OF TORRANCE	-33.40	
ALLIED-SIGNAL, INC (TORRANCE OFFICE)			TOTAL		0.00
SUCCESSOR TO GARRETT CORP, THE (MERGED WITH HONEYWELL INTERNATIONAL, INC AND NAME CHANGED TO HONEYWELL INTERNATIONAL, INC)	22.50		BLACK, DANA		
TOTAL		0.00	SUCCESSOR IN PART TO ESTATE OF JOHN GRANT SOLD TO ECOGAS, INC.	11.80	
ALLIED-SIGNAL, INC (EL SEGUNDO OFFICE) (FORMERLY: ALLIED CORP) (MERGED WITH HONEYWELL INTERNATIONAL, INC AND NAME CHANGED TO HONEYWELL INTERNATIONAL, INC)	255.00		TOTAL	-11.80	0.00
TOTAL		0.00	BOISE CASCADE BUILDING CO		
ALWAG, HILARIO S AND EMMA			SUCCESSOR IN PART TO JOUGHIN TORRANCE RANCH	16.92	
SUCCESSOR TO T C NAVARRO	53.90		SOLD TO INGLEWOOD, CITY OF	-16.92	
SUCCESSOR TO PEGGY SWICK	5.50		TOTAL		0.00
SOLD TO TORRANCE UNIFIED SCHOOL DISTRICT	-59.40		BOARD OF RETIREMENT-LOS ANGELES CO EMPL RET SYS		
TOTAL		0.00	SECOND WEST COAST BASIN JUDGMENT (NOW KNOWN AS LOS ANGELES COUNTY WESTERN AVE GOLF)		
AMERICAN PLANT GROWERS, INC			BRANDSMA, MAYNARD		
SECOND WEST COAST BASIN JUDGMENT	2.60		SUCCESSOR IN PART TO ESTATE OF JOHN GRANT	11.80	
SUCCESSOR TO BEN CLUFF DAIRY	7.40		SOLD TO HILLSIDE MEMORIAL PARK	-11.80	
SOLD TO SUNRISE GROWERS, INC	-10.00		TOTAL		0.00
SUCCESSOR TO SUNRISE GROWERS, INC	10.00		BURKE, W F AND LOIS PRICE	9.50	
SOLD TO VUKELICH MIKE, JR.	-10.00		SOLD TO H S SCOTT	-9.50	
TOTAL		0.00	TOTAL		0.00
ANDERSON, REMBERT C	80.50		CBS INC		
SOLD TO SPARKLETTS DRINKING WATER CORP	-80.50		FORMERLY COLUMBIA BROADCASTING SYS INC	18.50	
TOTAL		0.00	SOLD TO MORAN, RONALD E	-9.00	
AQUA CAPITAL MANAGEMENT LP			TOTAL		9.50
SUCCESSOR TO ECOGAS	11.80		CALIFORNIA, STATE OF		
SOLD TO HILLSIDE MEMORIAL PARK AND MORTUARY	-11.80		SUCCESSOR TO ROBERT L FULLILOVE	1.00	
TOTAL		0.00	SUCCESSOR TO JOE MONIZ JR	2.20	
ASAHI FANCY KOI, INC			SUCCESSOR IN PART TO KELLY PIPE CO	16.30	
SUCCESSOR IN PART TO JAKE ENGELSMA	2.00		SUCCESSOR IN PART TO FLAVIO RODRIGUEZ	4.00	
TOTAL		2.00	SUCCESSOR IN PART TO A H SMITH (SAM SURBER AND FRED A SMITH)	2.60	
ASSOCIATED SOUTHERN INVESTMENT CO (FORMERLY EDISON SECURITIES CO)	46.70		SOLD TO SPARKLETTS DRINKING WATER CORP	-26.10	
SOLD TO SOUTHERN CALIFORNIA EDISON CO	-46.70		TOTAL		0.00
TOTAL		0.00	CALIFORNIA WATER SERVICE CO	3,071.00	
ATLANTIC RICHFIELD CO (FORMERLY RICHFIELD OIL CO)	4,428.00		SUCCESSOR TO PALOS VERDES WATER CO	999.00	
SUCCESSOR TO MANVILLE SALES CORP	881.00		TOTAL		4,070.00
SOLD TO TESORO REFINING AND MARKETING COMPANY LLC (6-13-2013)	-5,309.00		CALIFORNIA WATER SERVICE CO (DOMINGUEZ)		
TOTAL		0.00	DOMINGUEZ WATER CO MERGED WITH AND INTO CALIFORNIA WATER SERVICE CO, WATERMASTER ACCOUNT KNOWN AS CALIFORNIA WATER SERVICE CO (DOMINGUEZ)	10,162.45	
AUTOMATION INDUSTRIES			SUCCESSOR IN PART TO HONEYWELL INTERNATIONAL INC	255.00	
SUCCESSOR TO HARRIS TUBE, INC	0.70		TOTAL		10,417.45
TOTAL		0.70	CARSON ESTATE CO	130.00	
BALLMAN, ROSEMARY N	7.00		SOLD TO DOMINGUEZ WATER CORP	-130.00	
SOLD TO UNITED CALIFORNIA BANK	-7.00		TOTAL		0.00
TOTAL		0.00	CARSON-HARBOR VILLAGE MOBILE HOME PARK		
BANK OF AMERICA NATIONAL TRUST AND SAVINGS ASSOCIATION (TRUST BI-51)	0.10		SUCCESSOR TO ETCEMENDY, CAROLINE, ESTATE OF	8.20	
RELEASED TO MICHAEL L ROCKWELL	-0.10		SOLD TO MONTROSE CHEMICAL CORPORATION OF CALIFORNIA (9-28-2011)	-1.20	
TOTAL		0.00	TOTAL		7.00
BARCLAY HOLLANDER CORP (FORMERLY BARCLAY HOLLANDER CURCI INC)			CARSON-MADRONA CO		
SUCCESSOR IN PART TO JOUGHIN TORRANCE RANCH	3.33		SUCCESSOR TO CHANSLOR-WESTERN OIL AND DEVELOP CO	104.00	
SOLD TO TORRANCE, CITY OF	-3.33		TOTAL		104.00
TOTAL		0.00	CENTURY BUILDERS		
BARCLAY HOLLANDER CURCI INC			SUCCESSOR TO UNION NURSERY, INC	4.70	
			TOTAL		4.70
			CHANDLERS PALOS VERDES SAND AND GRAVEL CORP		
			SECOND WEST COAST BASIN JUDGMENT	95.20	
			SUCCESSOR TO SOUTHWESTERN PORTLAND CEMENT CO	15.00	
			SUCCESSOR TO TORRANCE SAND AND GRAVEL CORP	184.00	
			SOLD TO ROLLING HILLS COUNTRY CLUB	-290.00	
			TOTAL		4.20

CHANSOR-WESTERN OIL AND DEVELOPMENT CO (FORMERLY CHANSOR-CANFIELD MIDWAY OIL CO) SOLD TO CARSON-MADRONA CO TOTAL	104.00 -104.00 0.00		SOLD TO DOMINGUEZ WATER CORP TOTAL DOUGLAS AIRCRAFT CO, INC (SEE MCDONNELL DOUGLAS CORP)	-32.60 0.00	0.00
CHEMICALS CO OF ALLIED CORP (FORMERLY INDUSTRIAL CHEMICAL DIVISION, ALLIED CHEMICAL CORP) (NOW KNOWN AS ALLIED CORP)			EARLY, H J AND DAISY SOLD TO DOMINGUEZ WATER CORP SOLD TO SAMUEL R AND RAYMOND S FUJIMOTO TOTAL	111.00 -91.00 -20.00 0.00	
CHEVRON USA INC (FORMERLY STANDARD OIL CO OF CALIFORNIA) SUBJECT TO LONG TERM LEASE FROM ISABELLA GRANZ PER JUDGEMENT TOTAL	4,541.70 59.60 4,601.30		ECOGAS, INC. SUCCESSOR TO BLACK, DANA SOLD TO AQUA CAPITAL MANAGEMENT LP TOTAL	11.80 -11.80 0.00	
CHRISTIE, CLEM, DON C FOHL AND LEON LARSON (TRUSTEES OF WILMINGTON CEMETERY ASSOC) ABANDONED WATER RIGHT TOTAL	0.02 -0.02 0.00		ECO SERVICES OPERATIONS LLC (FORMERLY SOLVAY USA INC.) TOTAL	521.00 521.00	
CHURCHILL DOWNS CALIFORNIA CO SUCCESSOR TO HOLLYWOOD PARK OPERATING CO SOLD TO HOLLYWOOD PARK LAND COMPANY, LLC TOTAL	282.00 -282.00 0.00		EDISON SECURITIES CO (NOW KNOWN AS ASSOCIATED SOUTHERN INVESTMENT CO) EL SEGUNDO, CITY OF TOTAL	953.00 953.00	
CLUFF, BEN DAIRY SUCCESSOR TO EDWARD AND EMILY COST SOLD TO AMERICAN PLANT GROWERS, INC TOTAL	7.40 -7.40 0.00		ENGELSMA, JAKE SUCCESSOR TO WILBUR HORNSTRA SOLD TO ASAHI FANCY KOI, INC TRANSFERRED TO SUSAN ENGELSMA, TRUSTEE ET AL TOTAL	14.10 -2.00 -12.10 0.00	
COAST FOREST PRODUCTS SUCCESSOR TO SOUTHWEST STEEL ROLLING MILLS SOLD TO GEORGIA-PACIFIC CORP TOTAL	3.40 -3.40 0.00		ENGELSMA, SUSAN; TRUSTEE OF THE SUSAN ENGELSMA TRUST TRANSFERRED FROM JAKE ENGLESMA TOTAL	12.10 12.10	
COASTLINE CHURCH OF CHRIST SUCCESSOR TO LERMENS, EVELYN TOTAL	0.70 0.70		EQUILON ENTERPRISES, LLC SUCCESSOR TO TEXACO REFINING AND MARKETING, INC SOLD TO SHELL OIL PRODUCTS US TOTAL	3,432.00 -3,432.00 0.00	
COLLISTER, CAMERON SUCCESSOR TO JOUGHIN TORRANCE RANCH QUITCLAIMED TO NORMANDIE PARK TOTAL	136.82 -136.82 0.00		ETCHEMENDY, CAROLINE, ESTATE OF SOLD TO CARSON-HARBOR VILLAGE MOBILE HOME PARK TOTAL	8.20 -8.20 0.00	
COLUMBIA BROADCASTING SYSTEM, INC (NOW KNOWN AS CBS INC)			EVERGREEN AMERICA CORP SUCCESSOR TO POTHOS CORP TOTAL	5.40 5.40	
CONOCOPHILLIPS COMPANY SUCCESSOR TO TOSCO CORPORATION (NOW KNOWN AS PHILLIPS 66 COMPANY)			EWING, CARMELITA ROSECRANS SOLD TO SOUTHERN CALIFORNIA WATER CO TOTAL	91.30 -91.30 0.00	
COST, EDWARD AND EMILY SOLD TO BEN CLUFF DAIRY TOTAL	7.40 -7.40 0.00		EWING, NED ET AL SUCCESSOR IN PART TO ISABEL J GRANZ ESTATE SOLD TO R A WATT, INC TOTAL	6.50 -6.50 0.00	
CURTIS, OWEN W SOLD TO SOUTHERN CALIFORNIA WATER CO TOTAL	3.80 -3.44 0.36		FLESH, LESLIE R AND ANDOR PASTERNAK, ET AL SUCCESSORS TO ALFRED D AND RUTH SEABACK SOLD TO STANLEY C LAGERLOF TOTAL	3.50 -3.50 0.00	
DEL AMO ESTATE CO SOLD TO DOMINGUEZ WATER CORP TOTAL	121.00 -121.00 0.00		FLETCHER OIL AND REFINING CO (FORMERLY FLETCHER OIL CO) SUCCESSOR TO FLETCHER, ROBERT G ET AL SOLD TO WESTERN WATER CO TOTAL	86.30 3.70 -90.00 0.00	
DELANEY, GOLDA, ESTATE OF (FORMERLY ARTHUR J DELANEY) SUCCESSOR TO BEGO CORP TOTAL	4.10 4.10		FLETCHER, ROBERT G, DANIEL S, AND WILFRED O SUCCESSOR TO FRED A JUNGQUIST SOLD TO FLETCHER OIL AND REFINING CO TOTAL	3.70 -3.70 0.00	
DENNIS, ESTHER M SHEETS (FORMERLY ESTHER M SHEETS) SOLD TO TORRANCE, CITY OF TOTAL	5.50 -5.50 0.00		FUJIMOTO, SAMUEL R (FORMERLY KNOWN AS FUJIMOTO, SAMUEL R AND RAYMOND S) SUCCESSOR IN PART TO H J AND DAISY EARLY SOLD TO FUJIMOTO, SAMUEL R, STEVEN T AND JON T JOINT TENANTS TOTAL	20.00 -20.00 0.00	
DESSER ENTERPRISES, INC. SECOND WEST COAST BASIN JUDGMENT SOLD TO MYRON Z. CHLAVIN AND NETTIE DESSER TRUST AND JHD PROPERTIES, LLC TOTAL	0.00 -0.00 0.00		FUJIMOTO, SAMUEL R AND RAYMOND S (SEE FUJIMOTO, SAMUEL R) FUJIMOTO, SAMUEL R, STEVEN T AND JON K, JOINT TENANTS SUCCESSOR TO FUJIMOTO, SAMUEL R TOTAL	20.00 20.00	
DOMINGUEZ ESTATE CO SOLD TO DOMINGUEZ WATER CORP TOTAL	254.00 -254.00 0.00		FULLILOVE, ROBERT L SOLD TO STATE OF CALIFORNIA TOTAL	1.00 -1.00 0.00	
DOMINGUEZ WATER CORP (NOW KNOWN AS DOMINGUEZ WATER CO)			FUTURA INDUSTRIES, INC SUCCESSOR TO SPANISH AMERICAN INSTITUTE SOLD TO KAUFMAN, LEO AND SHELDON BAER TOTAL	44.40 -44.40 0.00	
DOMINGUEZ WATER CO (FORMERLY KNOWN AS DOMINGUEZ WATER CORP) SUCCESSOR TO CARSON ESTATE CO SUCCESSOR TO DEL AMO ESTATE CO SUCCESSOR TO DOMINGUEZ ESTATE CO SUCCESSOR TO DON WILSON BUILDERS SUCCESSOR TO HEYDENBECK, JEANETTE R SUCCESSOR TO NAKANO, KIKUÑO, ET AL SUCCESSOR IN PART TO H J EARLY SUCCESSOR IN PART TO R A WATT, INC SOLD IN PART TO WATSON LAND CO SUCCESSOR TO THORPE, GREGORY DOMINGUEZ WATER CO MERGED WITH AND INTO CALIFORNIA WATER SERVICE CO, WATERMASTER ACCOUNT KNOWN AS CALIFORNIA WATER SERVICE CO (DOMINGUEZ) TOTAL	9,477.80 130.00 121.00 254.00 32.60 0.70 19.30 91.00 61.85 -37.60 11.80 -10,162.45 0.00		GARRETT CORP, THE SUCCESSOR TO SHINODA BROTHERS INC TRANSFERRED TO ALLIED-SIGNAL INC (TORRANCE OFFICE)	22.50 -22.50	
DON WILSON BUILDERS SUCCESSORS TO KASUO, ISAMU, AND YOSHIKI R KITA	32.60				



# West Coast Basin Watermaster

TOTAL	0.00	TOTAL	0.00
GATX TANK STORAGE TERMINALS CORP SUCCESSOR TO PHILLIPS PETROLEUM CO SOLD TO KINDER MORGAN LIQUIDS TERMINALS, LLC.	167.00 -167.00	HOLLYWOOD PARK INC (FORMERLY HOLLYWOOD TURF CLUB) (NOW KNOWN AS HOLLYWOOD PARK OPERATING CO)	
TOTAL	0.00	HOLLYWOOD PARK LAND COMPANY, LLC SUCCESSOR TO CHURCHILL DOWNS CALIFORNIA COMPANY	282.00
GEORGIA-PACIFIC CORP SUCCESSOR TO COAST FOREST PRODUCTS SOLD TO INGLEWOOD, CITY OF	3.40 -3.40	TOTAL	282.00
TOTAL	0.00	HOLLYWOOD PARK OPERATING CO (FORMERLY HOLLYWOOD PARK INC)	282.00
GERAHUE LAND CO SUCCESSOR AND ASSIGNEE FOR A S JOHNSTON DRILL CO	11.90	SOLD TO CHURCHILL DOWNS CALIFORNIA CO	-282.00
ABANDONED WATER RIGHT	-11.90	TOTAL	0.00
TOTAL	0.00	HOLLYWOOD TURF CLUB (NOW KNOWN AS HOLLYWOOD PARK INC)	
GILLINGHAM, FLORENCE R, ET AL	2.40	HONEYWELL INTERNATIONAL INC	
TOTAL	2.40	MERGED WITH ALLIED-SIGNAL INC (EL SEGUNDO AND TORRANCE OFFICES) AND THE CORP NAME CHANGED TO HONEYWELL INTERNATIONAL INC	277.50
GOLDEN STATE WATER COMPANY SUCCESSOR TO SOUTHERN CALIFORNIA WATER COMPANY (NAME CHANGE)	7,502.24	SOLD IN PART TO CALIFORNIA WATER SERVICE CO (DOMINGUEZ)	-255.00
TOTAL	7,502.24	TOTAL	22.50
GONZALES, FELIPE AND GABRIELA (NOW KNOWN AS GONZALES, GABRIELA AND MARIA R)		HONOLD, KRISTIN BRANDSMA SUCCESSOR IN PART TO ESTATE OF JOHN GRANT	11.80 11.80
GONZALES, GABRIELA AND MARIA R (FORMERLY GONZALES, FELIPE AND GABRIELA)	34.30	HORNSTRA, WILBUR	14.10
SOLD TO TORRANCE, CITY OF	-34.30	SOLD TO JAKE ENGELSMA	-14.10
TOTAL	0.00	TOTAL	0.00
GRAND LAND CO SUCCESSOR IN PART TO SMITH, A H, ET AL	5.70	HUGHES AIRCRAFT (SEE 1981 JUDGMENT ORDER)	0.00 0.00
ABANDONED WATER RIGHTS 1961-62	-5.70	HUNT, DONALD G SUCCESSOR TO JAMES SCANDA	1.90
TOTAL	0.00	SOLD TO KENICHI INOSE	-1.90
GRANT, JOHN, ESTATE OF APPORTIONED IN PART TO BLACK, DANA	59.00 -11.80	TOTAL	0.00
APPORTIONED IN PART TO BRANDSMA, MAYNARD	-11.80	INDUSTRIAL CHEMICAL DIVISION, ALLIED CHEMICAL CORP (FORMERLY ALLIED CHEMICAL CORP, GEN CHEMICAL CO) (NOW KNOWN AS ALLIED CORP)	
APPORTIONED IN PART TO HONOLD, KRISTIN BRANDSMA	-11.80	INGLEWOOD, CITY OF	4,382.00
APPORTIONED IN PART TO THORPE, GREGORY	-11.80	SUCCESSOR TO ABELL, FRANK	1.80
APPORTIONED IN PART TO THORPE, TERRENCE	-11.80	SUCCESSOR TO BOISE CASCADE BUILDING CO	16.92
TOTAL	0.00	SUCCESSOR TO GEORGIA-PACIFIC CORP	3.40
GRANZ, ISABELA J	380.00	SUCCESSOR TO KAUFMAN, LEO AND SHELDON BAER	44.40
PARTITIONED TO HEIRS: ISABELA J GRANZ ESTATE	-33.80	SUCCESSOR IN PART TO GEORGE R MURDOCK	1.37
JOUGHIN TORRANCE RANCH	-212.42	TOTAL	4,449.89
GEORGE R MURDOCK	-15.12	INOSE ET AL (KEN K INOSE, KAY K INOSE, KIYOKO YOSHIYAMA, KENICHI INOSE, KAYOKO K INOSE AND DAVID T NAKATANI, TRUSTEE OF THE INOSE CHILDREN TRUST U/D/T DATE 11/1/78) (FORMERLY INOSE, KENICHI)	
EMMA J OSBORN	-32.66	SUCCESSOR TO HUNT, DONALD G	1.90
SUBJECT TO LONG TERM LEASE TO: STANDARD OIL CO OF CALIF	-59.60	SUCCESSOR TO THAXTER, RALPH AND LOIS A LENOIR	3.50
SUPERIOR OIL CO	-26.40	SOLD TO POTHOS CORP	-5.40
TOTAL	0.00	TOTAL	0.00
GRANZ, ISABELA J, ESTATE OF SUCCESSOR IN PART TO ISABELA J GRANZ	33.80	INOSE, KENICHI (NOW KNOWN AS INOSE ET AL)	
SOLD IN PART TO RICHARD BARCLAY AND R A WATT	-13.55	JENKINS, HARRY C SUCCESSOR TO H L PERRY	1.80
SOLD IN PART TO NED EWING, ET AL	-6.50	SOLD TO ABC NURSERY, INC	-1.80
SOLD IN PART TO R A WATT, INC	-13.75	TOTAL	0.00
TOTAL	0.00	JOHNS-MANVILLE PRODUCTS CORP (SEE JOHNS-MANVILLE SALES CORP)	
HARRIS, R AND L SUCCESSOR TO LAWRENCE I LISTON	0.70	JOHNS-MANVILLE SALES CORP (FORMERLY: JOHNS-MANVILLE PRODUCTS CORP MANVILLE SERVICE CORP) (NOW KNOWN AS MANVILLE SALES CORP)	
DISCLAIMED WATER RIGHT	-0.70	TOTAL	0.00
TOTAL	0.00	JOHNSTON, A S, DRILLING CO	11.90
HARRIS TUBE, INC SUCCESSOR IN PART TO B ROBINSON AND ASSOCIATES	0.70	ASSIGNED TO GERAHUE LAND CO	-11.90
TRANSFERRED TO AUTOMATION IND INC- HARRIS TUBE	-0.70	TOTAL	0.00
TOTAL	0.00	JONES, ANNA MAE	50.20
HAWTHORNE, CITY OF	1,882.00	SOLD TO CITY OF TORRANCE	-50.20
TOTAL	1,882.00	TOTAL	0.00
HENDERSON, BEATRICE M ABANDONED WATER RIGHT	1.30 -1.30	JOUGHIN TORRANCE RANCH SUCCESSOR IN PART TO ISABELA J GRANZ	212.42
TOTAL	0.00	SOLD IN PART TO BARCLAY HOLLANDER	-3.33
HEYDENBECK, JEANETTE R (FORMERLY JEANETTE R REIFSNYDER)	0.70	CURCI INC	
SOLD TO DOMINGUEZ WATER CORP	-0.70	SOLD IN PART TO BOISE CASCADE BUILDING CO	-16.92
TOTAL	0.00	SOLD IN PART TO COLLISTER, CAMERON	-136.82
HILLSIDE MEMORIAL PARK SUCCESSOR TO SANTA FE LAND IMPROVEMENT CO	16.70 39.50	SOLD IN PART TO R A WATT, INC	-55.35
SUCCESSOR TO SIGMUND S AND LIONEL S HOCKWALD	12.50	TOTAL	0.00
SUCCESSOR TO THORPE, TERRENCE	11.80	JUNGQUIST, FRED A (FORMERLY KATHERINE P WOODMAN)	3.70
SUCCESSOR TO BRANDSMA, MAYNARD	11.80	SOLD TO ROBERT G FLETCHER ET AL	-3.70
SUCCESSOR TO AQUA CAPITAL MANAGEMENT L.P.	11.80		
TOTAL	104.10		
HOCKWALD, SIGMUND S AND LIONEL S SOLD TO HILLSIDE MEMORIAL PARK	12.50 -12.50		

TOTAL	0.00		(NOW KNOWN AS LOMITA, CITY OF WATER SYSTEM WWD 13)		
KAHLERT, ET AL			LOS ANGELES COUNTY WATERWORKS DISTRICT NO 22	551.00	
AND SUCCESSOR IN PART TO KELLY PIPE CO	18.90		SOLD TO SOUTHERN CALIF WATER CO	-551.00	
SOLD TO SPARKLETTS DRINKING WATER CORP	-18.90		TOTAL		0.00
TOTAL	0.00		LOS ANGELES COUNTY WESTERN AVE GOLF COURSE (FORMERLY BOARD OF RETIREMENT OF THE LOS ANGELES COUNTY EMPLOYEES RETIREMENT SYSTEM)		
KAUFMAN, LEO AND SHELDON BAER			(NOW KNOWN AS LOS ANGELES CHESTER L WASH GOLF)		
SUCCESSOR TO FUTURA INDUSTRIES INC	44.40	0.00	LOYOLA MARYMOUNT UNIVERSITY (FORMERLY LOYOLA UNIVERSITY OF LOS ANGELES)	48.10	
SOLD TO CITY OF INGLEWOOD	-44.40		TOTAL		48.10
TOTAL	0.00		MANHATTAN BEACH, CITY OF	1,131.20	
KELLY PIPE CO	49.00		TOTAL		1,131.20
SOLD IN PART TO STATE OF CALIFORNIA	-16.30		MANVILLE SALES CORP (FORMERLY: JOHNS-MANVILLE SALES CORP)	881.00	
SOLD IN PART TO KAHLERT, ET AL	-18.90		(FORMERLY: JOHNS-MANVILLE PRODUCTS CORP MANVILLE SERVICE)		
SOLD IN PART TO SPARKLETTS DRINKING WATER CORP	-13.80		SOLD TO ATLANTIC RICHFIELD CO	-881.00	
TOTAL	0.00		TOTAL		0.00
KINDER MORGAN LIQUIDS TERMINALS, LLC.			MANVILLE SERVICE CORP (SEE JOHNS-MANVILLE SALES CORP)		
SUCCESSOR TO GATX TANK STORAGE TERMINALS CORP.	167.00	167.00	MARTIN BROTHERS BOX CO, INC	3.40	
TOTAL	0.00		SOLD TO SOUTHWEST STEEL ROLLING MILLS	-3.40	
KITA, ISAMU, KASUO, AND YOSHIKI R	32.60		TOTAL		0.00
SOLD TO DON WILSON BUILDERS	-32.60		MAYFLOWER NURSERIES (HERBERT SAKAYE FUKUWAI, DBA)	0.00	
TOTAL	0.00		TOTAL		0.00
KURTZ, GLADYS	3.50		MCCANDLESS, JAMES	6.70	
SOLD TO SPARKLETTS DRINKING WATER CORP	-3.50		SOLD TO SPARKLETTS DRINKING WATER CORP	-6.70	
TOTAL	0.00		TOTAL		0.00
LAGERLOF, STANLEY C			MCDONNELL DOUGLAS CORP (FORMERLY DOUGLAS AIRCRAFT, CO INC)		
SUCCESSOR TO LESLIE R FLESCH AND ANDOR PASTERNAK, ET AL	3.50		LONG TERM LEASE FROM UNITED STATES NAVY DEPARTMENT	1.70	
SOLD TO SHELL OIL CO	-3.50		TOTAL		1.70
TOTAL	0.00		MONETA MUTUAL WATER CO	916.00	
LAWLER, JAMES K	3.10		SOLD TO CITY OF TORRANCE	-916.00	
SOLD TO B ROBINSON AND ASSOC	-3.10		TOTAL		0.00
TOTAL	0.00		MONIZ, JOE JR	2.20	
LERMENS, EVELYN			SOLD TO STATE OF CALIFORNIA	-2.20	
(FORMERLY LERMENS, ALFRED)	0.70		TOTAL		0.00
SOLD TO COASTLINE CHURCH OF CHRIST	-0.70		MONTROSE CHEMICAL CORPORATION OF CALIFORNIA		
TOTAL	0.00		SUCCESSOR TO CARSON-HARBOR VILLAGE MOBILE HOME PARK (9-28-2011)	1.20	
LEUZINGER, EMMA L	1.40		TOTAL		1.20
TOTAL	1.40	1.40	MORAN, RONALD E		
LISTON, LAWRENCE	0.70		SUCCESSOR IN PART TO COLUMBIA BROADCASTING SYSTEM, INC	9.00	
SOLD TO R AND L HARRIS	-0.70		SOLD TO CITY OF TORRANCE	-9.00	
TOTAL	0.00		TOTAL		0.00
LITTLE, WILLIAM			MORI, ROY H AND KENJI		
SUCCESSOR TO ROCKWELL, MICHAEL	0.10		SECOND WEST COAST BASIN JUDGMENT	5.60	
SOLD TO WATT INDUSTRIAL PROPERTIES	-0.10		SOLD TO NOZAKI, SUMIKICHI	-2.00	
TOTAL	0.00		TOTAL		3.60
LOCKHEED MARTIN CORPORATION			MURDOCK, GEORGE R		
SUCCESSOR TO OCEAN INDUSTRIES	0.10	0.10	SUCCESSOR IN PART TO ISABELA J GRANZ	15.12	
TOTAL	0.10	0.10	SOLD IN PART TO R BARCLAY AND R A WATT	-13.75	
LOMITA, CITY OF WATER SYSTEM (WWD 13)	1,352.00		SOLD IN PART TO CITY OF INGLEWOOD	-1.37	
(FORMERLY LOS ANGELES COUNTY WATERWORKS DISTRICT NO 13)			TOTAL		0.00
TOTAL	1,352.00	1,352.00	MYRON Z. CHLAVIN AND NETTIE DESSER TRUST AND JHD PROPERTIES, LLC		
LONG BEACH, CITY OF	0.70		SUCCESSOR TO DESSER ENTERPRISES, INC.	0.00	
TOTAL	0.70	0.70	TOTAL		0.00
LOPES, FRANK	3.70		NAKANO, KIKUNO, ET AL	19.30	
TOTAL	3.70	3.70	SOLD TO DOMINGUEZ WATER CORP	-19.30	
LOS ANGELES, CITY OF			TOTAL		0.00
TOTAL	1,503.00	1,503.00	NAVARRO, T C	53.90	
LOS ANGELES COUNTY-ALONDRA PARK	28.70		SOLD TO HILARIO S AND EMMA ALWAG	-53.90	
SUCCESSOR TO LOS ANGELES COUNTY FLOOD CONTROL DIST	39.00		TOTAL		0.00
MERGED WITH LOS ANGELES COUNTY CHESTER L. WASHINGTON GOLF COURSE UNDER NEW NAME "LOS ANGELES COUNTY RECREATION FACILITIES"	-67.70		NORAIR, A DIVISION OF NORTHROP CORP (FORMERLY KNOWN AS NORTHROP AIRCRAFT, INC) (NOW KNOWN AS NORTHROP CORP)		
TOTAL	0.00		NORMANDIE PARK		
LOS ANGELES COUNTY CHESTER L WASHINGTON GOLF COURSE			SUCCESSOR TO COLLISTER, CAMERON	136.82	
(FORMERLY LOS ANGELES COUNTY WESTERN AVENUE GOLF COURSE)	296.00		SOLD TO CITY OF TORRANCE	-136.82	
MERGED WITH LOS ANGELES COUNTY ALONDRA PARK UNDER NEW NAME "LOS ANGELES COUNTY RECREATION FACILITIES"	-296.00		TOTAL		0.00
TOTAL	0.00		NORTHROP CORP (FORMERLY KNOWN AS NORAIR, A DIV OF NORTHROP CORP)	38.15	
LOS ANGELES COUNTY FLOOD CONTROL DISTRICT	37.60		NOZAKI, SUMIKICHI		
SUCCESSOR IN PART TO A H SMITH, ET AL	1.40		SUCCESSOR IN PART TO MORI, ROY H AND KENJI	2.00	
SOLD TO LOS ANGELES COUNTY - ALONDRA PARK	-39.00		SUCCESSOR IN PART TO UNITED CALIFORNIA BANK	5.00	
TOTAL	0.00		TOTAL		7.00
LOS ANGELES COUNTY RECREATION FACILITIES					
MERGER OF LOS ANGELES COUNTY ALONDRA PARK, AND LOS ANGELES COUNTY CHESTER L. WASHINGTON GOLF COURSE	67.70				
TOTAL	296.00	363.70			
LOS ANGELES COUNTY SANITATION DIST NO 2	102.00	102.00			
TOTAL	102.00	102.00			
LOS ANGELES COUNTY WATERWORKS DISTRICT NO 13					

# West Coast Basin Watermaster

OCEAN INDUSTRIES			TOTAL		0.00
SUCCESSOR TO WATT INDUSTRIAL PROPERTIES (NAME CHANGE)	0.10		RYAN AERONAUTICAL CO	20.20	
SOLD TO LOCKHEED MARTIN CORPORATION	-0.10		SOLD TO SOUTHERN CALIFORNIA WATER CO	-20.20	
TOTAL		0.00	TOTAL		0.00
OSBORN, EMMA J			SANTA FE LAND IMPROVEMENT CO	39.50	
SUCCESSOR IN PART TO ISABELA J GRANZ	32.66		SOLD TO HILLSIDE MEMORIAL PARK	-39.50	
SOLD TO R BARCLAY AND R A WATT	-32.66		TOTAL		0.00
TOTAL		0.00	SCANDA, JAMES AND GEORGE NASSIN	1.90	
OTANI, CHISATO	0.00		SOLD TO DONALD G HUNT	-1.90	
TOTAL		0.00	TOTAL		0.00
PACIFIC CREST CEMETERY CO	17.70		SCHLAEGEL, KEITH W AND OPAL B	13.60	
SUCCESSOR TO H S SCOTT	9.50		SOLD TO SIDNEY R AND CHARLOTTE W TITLE	-13.60	
SUCCESSOR TO WADA, KAORU AND SATORU	12.20		TOTAL		0.00
SOLD TO SCI CALIFORNIA FUNERAL SERVICES INC.		-39.40	SCI CALIFORNIA FUNERAL SERVICES INC		
TOTAL		0.00	SUCCESSOR TO PACIFIC CREST CEMETERY CO	39.40	
PALOS VERDES BEGONIA FARM			TOTAL		39.40
SUCCESSOR TO GUS A BAUMAN	0.00		SCOTT, H S		
TOTAL		0.00	SUCCESSOR TO W F BURKE AND LOIS PRICE	9.50	
PALOS VERDES WATER CO	999.00		QUITCLAIMED TO PACIFIC CREST CEMETERY CO	-9.50	
SOLD TO CALIFORNIA WATER SERVICE CO	-999.00		TOTAL		0.00
TOTAL		0.00	SEABACK, ALFRED D AND RUTH	3.50	
PARK WATER CO	160.00		SOLD TO LESLIE R FLESH AND OR	-3.50	
SOLD TO SOUTHERN CALIFORNIA WATER	-160.00		PASTERNAK, ET AL		
TOTAL		0.00	TOTAL		0.00
PARKE, ZORAIDA	1.80		SEPULVEDA, LOUIS M	0.70	
SOLD TO H L PERRY	-1.80		ACQUIRED BY RUFFNER CORP	-0.70	
TOTAL		0.00	TOTAL		0.00
PASCHKE, WILLIAM JOSEPH	0.02		SHEETS, ESTHER M		
ABANDONED WATER RIGHT	-0.02		(FORMERLY CLYDE L SHEETS)		
TOTAL		0.00	(SEE DENNIS, ESTHER M SHEETS)		
PERRY, H L			SHELL OIL CO	4,516.00	
SUCCESSOR TO ZORAIDA PARKE	1.80		SUCCESSOR TO LAGERLOF, STANLEY C	3.50	
SOLD TO HARRY C JENKINS	-1.80		SOLD IN PART TO UNION OIL CO OF CAL	-1,974.00	
TOTAL		0.00	SOLD IN PART TO UNION OIL CO OF CAL	-1,526.00	
PHILLIPS 66 COMPANY			TOTAL		1,019.50
(FORMERLY CONOCOPHILLIPS COMPANY)	6,170.00		SHELL OIL PRODUCTS US		
TOTAL		6,170.00	SUCCESSOR TO EQUILON ENTERPRISES, LLC	3,432.00	
PHILLIPS PETROLEUM CO			SOLD TO TESORO REFINING AND MARKETING	-3,432.00	
(FORMERLY TIDEWATER OIL CO)	167.00		COMPANY		
SOLD TO GATX TANK STORAGE TERM CORP	-167.00		TOTAL		0.00
TOTAL		0.00	SHINODA BROTHERS, INC		
POTHOS CORP			SECOND WEST COAST BASIN JUDGMENT	22.50	
SUCCESSOR TO INOSE ET AL	5.40		SOLD TO GARRETT CORP, THE	-22.50	
SOLD TO EVERGREEN AMERICA CORP	-5.40		TOTAL		0.00
TOTAL		0.00	SMITH, A H,(SAM SURBER AND FRED A SMITH)	9.70	
REHOR, JOSEPHINE P	2.20		SOLD IN PART TO STATE OF CALIFORNIA	-2.60	
TOTAL		2.20	SOLD IN PART TO GRAND LAND CO	-5.70	
REIFSNYDER, JEANETTE R			SOLD IN PART TO L A CO FLOOD CONTROL DISTRICT	-1.40	
(NOW KNOWN AS JEANNETTE R HEYDENBECK)			TOTAL		0.00
RHODIA, INC			SOCONY MOBIL OIL CO		
(NOW KNOWN AS SOLVAY USA INC.)			(SEE MOBIL OIL CO)		
SUCCESSOR TO RHONE-POULENC INC			SOLVAY USA INC.		
RHONE-POULENE BASIC CHEMICALS CO			(NOW KNOWN AS ECO SERVICES OPERATIONS LLC)	0.00	
SUCCESSOR TO STAUFFER CHEMICAL CO	521.00		SOUTHERN CALIFORNIA EDISON CO	10.40	
SOLD TO RHONE-POULENE INC	-521.00		SUCCESSOR TO ASSOCIATED SOUTHERN	46.70	
TOTAL		0.00	INVESTMENT CO		
RHONE-POULENC INC			TOTAL		57.10
SUCCESSOR TO RHONE-POULENC, BASIC	521.00		SOUTHERN CALIFORNIA WATER CO	6,265.30	
CHEMICALS CO			SUCCESSOR TO EWING, CARMELITA	91.30	
SOLD TO RHODIA, INC	-521.00		ROSECRANS		
TOTAL		0.00	SUCCESSOR TO LOS ANGELES COUNTY	551.00	
RICHFIELD OIL CORP			WATERWORKS DIST NO 22		
(NOW KNOWN AS ATLANTIC RICHFIELD CO)			SUCCESSOR TO PARK WATER CO	160.00	
ROBINSON, B, AND ASSOCIATES			SUCCESSOR TO RYAN AERONAUTICAL CO	20.20	
SUCCESSOR TO JAMES K LAWLER	3.10		SUCCESSOR TO SOUTHERN PACIFIC CO	166.00	
SOLD IN PART TO HARRIS TUBE, INC	-0.70		SUCCESSOR IN PART TO OWEN W CURTIS	3.44	
SOLD IN PART TO SOUTHERN CALIFORNIA	-2.40		SUCCESSOR IN PART TO B ROBINSON AND	2.40	
WATER CO			ASSOCIATES		
TOTAL		0.00	SUCCESSOR TO WESTERN WATER SERVICE	242.60	
ROCKWELL, MICHAEL L			COMPANY		
SUCCESSOR TO BANK OF AMERICA NATIONAL	0.10		NAME CHANGE TO GOLDEN STATE WATER	-7,502.24	
TRUST AND SAVINGS ASSOCIATION			COMPANY		
(TRUST B 1-51)			TOTAL		0.00
SOLD TO LITTLE, WILLIAM	-0.10		SOUTHERN PACIFIC CO	166.00	
TOTAL		0.00	SOLD TO SO CALIFORNIA WATER CO	-166.00	
RODRIGUEZ, FLAVIO	6.10		TOTAL		0.00
SOLD TO STATE OF CALIFORNIA	-4.00		SOUTHERN WESTERN PORTLAND CEMENT COMPANY	15.00	
DISCLAIMED WATER RIGHT	-2.10		SOLD TO CHANDLERS PALOS VERDES AND	-15.00	
TOTAL		0.00	GRAVEL CORP		
ROMAN CATHOLIC ARCHBISHOP OF LOS ANGELES (HOLY	72.30		TOTAL		0.00
CROSS CEMETERY)			SOUTHWEST STEEL ROLLING MILLS		
TOTAL		72.30	SUCCESSOR TO MARTIN BROTHERS BOX CO,	3.40	
ROLLING HILLS COUNTRY CLUB			INC		
SUCCESSOR TO CHANDLERS PALOS VERDES	290.00		SOLD TO COAST FOREST PRODUCTS	-3.40	
SAND AND GRAVEL CORP.			TOTAL		0.00
TOTAL		290.00	SPANISH AMERICAN INSTITUTE	44.40	
RUFFNER CORP			SOLD TO FUTURA INDUSTRIES, INC	-44.40	
SUCCESSOR TO LOUIS M SEPULVEDA	0.70		TOTAL		0.00
ABANDONED WATER RIGHT	-0.70		SPARKLETTS DRINKING WATER CORP		

SUCCESSOR TO ANDERSON, REMBERT C, ET AL	80.50		SUCCESSOR TO WESTON INVESTMENT CO	184.00	
SUCCESSOR TO CALIFORNIA, STATE OF	26.10		SOLD TO CHANDLERS PALOS VERDES	-184.00	
SUCCESSOR TO KAHLERT, ET AL	18.90		SAND AND GRAVEL CORP		
SUCCESSOR TO KURTZ, GLADYS	3.50		TOTAL		0.00
SUCCESSOR TO MCCANDLESS, JAMES	6.70		TORRANCE UNIFIED SCHOOL DISTRICT		
SUCCESSOR TO WECHSLER, B A	3.10		SUCCESSOR TO HILARIO S AND EMMA ALWAG	59.40	
SUCCESSOR IN PART TO KELLY PIPE CO	13.80		SOLD TO CITY OF TORRANCE	-59.40	
SOLD TO WESTERN WATER CO	-152.60		TOTAL		0.00
TOTAL		0.00	TOSCO CORP		
STANDARD OIL CO OF CALIFORNIA			SUCCESSOR TO UNION OIL CO OF CALIF	6,170.00	
(NOW KNOWN AS CHEVRON U S A, INC)			MERGED INTO CONOCOPHILLIS COMPANY	6,170.00	
STAUFFER CHEMICAL CO	521.00		TOTAL		0.00
SOLD TO RHONE-POULENC BASIC CHEMICALS	-521.00		TUNE, MATES, ET AL		
CO			SUCCESSOR TO JOSEPHINE WATKINSON	3.10	
TOTAL		0.00	SOLD TO B A WECHSLER	-3.10	
SUNRISE GROWERS, INC			TOTAL		0.00
SUCCESSOR TO AMERICAN PLANT GROWERS	10.00		UNION NURSERY, INC		
INC			SECOND WEST COAST BASIN JUDGMENT	4.70	
SOLD TO AMERICAN PLANT GROWERS, INC	-10.00		SOLD TO CENTURY BUILDERS	-4.70	
TOTAL		0.00	TOTAL		0.00
SUPERIOR OIL CO			UNION OIL CO OF CALIFORNIA	2,670.00	
SUBJECT TO LONG TERM LEASE FROM	26.40		SUCCESSOR IN PART TO SHELL OIL CO	1,974.00	
ISABELA J GRANZ			SUCCESSOR IN PART TO SHELL OIL CO	1,526.00	
SOLD TO MOBIL OIL CORP	-26.40		SOLD TO TOSCO CORP	-6,170.00	
TOTAL		0.00	TOTAL		0.00
SWICK, PEGGY	5.50		UNITED CALIFORNIA BANK		
SOLD TO HILARIO AND EMMA ALWAG	-5.50		SUCCESSOR TO BALLMAN, ROSEMARY N	7.00	
TOTAL		0.00	SOLD TO A B C NURSERY, INC	-2.00	
TESORO REFINING AND MARKETING COMPANY			SOLD TO NOZAKI, SUMIKICHI	-5.00	
SUCCESSOR TO SHELL OIL PRODUCTS US			TOTAL		0.00
(NOW KNOWN AS TESORO REFINING &			UNITED STATES NAVY DEPARTMENT	1.70	
MARKETING COMPANY LLC)			LONG TERM LEASE TO MCDONNELL DOUGLAS	-1.70	
TESORO REFINING & MARKETING COMPANY LLC	3,432.00		CORP PER JUDGEMENT		
(FORMERLY TESORO REFINING AND			TOTAL		0.00
MARKETING COMPANY)			UNITED STATES STEEL CORP	1,791.00	
SUCCESSOR TO ATLANTIC RICHFIELD	5,309.00		SOLD TO TORRANCE, CITY OF	-1,791.00	
COMPANY (6-13-2013)			TOTAL		0.00
TOTAL		8,741.00	VERBURG, WILLIAM AND CLARA B	6.70	
TEXACO, INC			SOLD TO ABC NURSERY, INC	-6.70	
(NOW KNOWN AS TEXACO REFINING AND MARKETING,			TOTAL		0.00
INC)			VUKELICH MIKE, JR.		
TEXACO REFINING AND MARKETING, INC	3,432.00		SUCCESSOR TO AMERICAN PLANT	10.00	
(FORMERLY: TEXACO, INC)			GROWERS, INC.		
SOLD TO EQUILON ENTERPRISES, LLC	-3,432.00		TOTAL		10.00
TOTAL		0.00	WADA, KAORU AND SATORU	12.20	
THAXTER, RALPH AND LOIS A LENOIR	3.50		SOLD TO PACIFIC CREST CEMETERY CO	-12.20	
SOLD TO KENICHI INOSE	-3.50		TOTAL		0.00
TOTAL		0.00	WATKINSON, JOSEPHINE	3.10	
THORPE, GREGORY			SOLD TO MATES TUNE, ET AL	-3.10	
SUCCESSOR IN PART TO ESTATE OF JOHN	11.80		TOTAL		0.00
GRANT			WATSON LAND CO	42.60	
SOLD TO DOMINGUEZ WATER CORP	-11.80		SUCCESSOR IN PART TO DOMINGUEZ WATER	37.60	
TOTAL		0.00	CORP		
THORPE, TERENCE			TOTAL		80.20
SUCCESSOR IN PART TO ESTATE OF JOHN	11.80		WATT INDUSTRIAL PROPERTIES		
GRANT			SUCCESSOR TO WILLIAM LITTLE	0.10	
SOLD TO HILLSIDE MEMORIAL PARK	-11.80		NAME CHANGE TO OCEAN INDUSTRIES	-0.10	
TOTAL		0.00	TOTAL		0.00
TIDEWATER OIL CO			WATT, R A, INC		
(SEE PHILLIPS PETROLEUM CO)			SUCCESSOR TO NED EWING, ET AL	6.50	
TITLE, SIDNEY R AND CHARLOTTE W			SUCCESSOR IN PART TO ISABELA J GRANZ	13.75	
SUCCESSOR TO KEITH W AND OPAL B	13.60		ESTATE		
SCHLAEGE L			SUCCESSOR IN PART TO JOUGHIN TORRANCE	55.35	
SOLD TO ABC NURSERY, INC	-13.60		RANCH		
TOTAL		0.00	SOLD TO DOMINGUEZ WATER CORP	-61.85	
TORRANCE, CITY OF	2,519.00		SOLD TO CITY OF TORRANCE	-13.75	
SUCCESSOR TO BARCLAY HOLLANDER CORP	3.33		TOTAL		0.00
SUCCESSOR TO BARCLAY, RICHARD AND			WECHSLER, B A		
WATT, R A	59.96		SUCCESSOR TO MATES TUNE, ET AL	3.10	
SUCCESSOR TO BELVIDERE MUTUAL WATER	33.40		SOLD TO SPARKLETTS DRINKING WATER	-3.10	
CO			CORP		
SUCCESSOR TO DENNIS, ESTHER M SHEETS	5.50		TOTAL		0.00
SUCCESSOR TO ALCAST FOUNDRY ET AL	7.20		WESTERN WATER CO		
SUCCESSOR TO GONZALES, GABRIELA AND	34.30		SUCCESSOR TO FLETCHER OIL AND REFINING CO	90.00	
MARIA R			SUCCESSOR TO SPARKLETTS DRINKING	152.60	
SUCCESSOR TO JONES, ANNA MAE	50.20		WATER CORP		
SUCCESSOR TO MONETA WATER CO	916.00		SOLD TO WESTERN WATER SERVICES CO	-242.60	
SUCCESSOR TO MORAN, RONALD E	9.00		TOTAL		0.00
SUCCESSOR TO NORMANDIE PARK	136.82		WESTERN WATER SERVICES CO *		
SUCCESSOR TO TORRANCE UNIFIED SCHOOL	59.40		SUCCESSOR TO WESTERN WATER CO.	242.60	
DISTRICT			SOLD TO SOUTHERN CALIFORNIA WATER	-242.60	
SUCCESSOR TO UNITED STATES STEEL CORP	1,791.00		COMPANY		0.00
SUCCESSOR TO WATT, R A, INC	13.75		WESTON INVESTMENT CO	184.00	
TOTAL		5,638.86	SOLD TO TORRANCE SAND AND GRAVEL	-184.00	
TORRANCE REFINING COMPANY LLC			CORP		
SUCCESSOR TO EXXONMOBIL OIL CORP, EXXON MOBIL			TOTAL		0.00
OIL CORPORATION SUCCESSOR TO MOBIL OIL CORP			WISEBURN SCHOOL DISTRICT	8.20	
(FORMERLY SOCONY MOBIL OIL CORP)	2,570.00		TOTAL		8.20
SUCCESSOR TO SUPERIOR OIL CO	26.40		WOODMAN, KATHERINE P		
TOTAL		2,596.40	(SEE FRED A JUNGQUIST)		
TORRANCE SAND AND GRAVEL CORP					

## West Coast Basin Watermaster

---

ZEIGLER, MAXWELL T	0.00	
TOTAL		0.00
GRAND TOTAL	64,468.25	64,468.25

\* WESTERN WTR. SERV.CO. - PARTY WITH ZERO AR FOR THE DURATION OF LONG-TERM LEASE AGREEMENT WITH CHEVRON (ENDED JUNE 30, 2013)

# Appendix C

Parties to the Amended Judgment and Water Rights Holders

as of

June 2023

**ABC Nursery, Inc**

Aqua Capital Management LP

**Asahi Fancy Koi, Inc.**

Atlantic Richfield Company

**Automation Industries, Inc.**

**CBS, Inc.**

**California Water Service Company (Hermosa Redondo)**

**California Water Service Company (Dominguez)**

California Water Service Company (Hawthorne Lease)

**Carson-Harbor Village Mobile Home Park**

**Carson-Madrona Company**

**Century Builders**

**Chandler's Palos Verdes Sand & Gravel Company**

**Chevron USA, Inc**

**Coastline Church of Christ**

**Curtis, Owen W.**

**Delaney, Golda, Estate of**

**El Segundo, City of**

**Engelsma, Susan Trust**

**Evergreen America Corp.**

**Fujimoto, S.R., S.T. & J.K.**

**Gillingham, Florence R., et al.**

**Golden State Water Company**

**Hawthorne, City of**

**Hillside Memorial Park**

**Hollywood Park Land Company, LLC**

**Honeywell International, Inc.**

**Honold, Kristin Brandsma**

Hughes Aircraft Company

International Plant Growers Inc.

**Inglewood, City of**

Inglewood Park Cemetery

**Kinder Morgan Liquids Terminals, LLC**

**Leuzinger, Emma L. Estate of**

**Lockheed Martin Corporation**

**Lomita, City of Water System**

---

Water Rights Holders are in **bold**.

**Long Beach, City of**

**Lopes, Frank**

**Los Angeles, City of**

**Los Angeles County Parks & Recreation**

**Los Angeles County Sanitation District 2**

**Loyola Marymount University**

**Manhattan Beach, City of**

Mayflower Nurseries

**McDonnell Douglas Corporation**

**Torrance Refining Company LLC**

**Montrose Chemical Corporation**

**Mori, Roy H. and Kenji**

Myron Z. Chlavin & Nettie Desser Trust & JHD Pr.

**Northrop Corporation**

**Nozaki, Sumikichi**

Ocean Industries

Pacific Crest Cemetery Company

Palos Verdes Begonia Farm

**Phillips 66 Company**

**Rehor, Josephine P.**

**Eco Services Operation, LLC**

**Rolling Hills Country Club**

Rolling Hills Vista

**Roman Catholic Archbishop of Los Angeles**

**Shell Oil Company**

**Southern California Edison Company**

**Tesoro Refining and Marketing Company**

**Torrance, City of**

**Vukelich, Mike Jr.**

Water Replenishment District

**Watson Land Company**

West Basin Municipal Water District

Western Water Service Company

**Wiseburn School District**

Zeigler, Maxwell T.

Non-Parties with Water Rights

**SCI California Funeral Services Inc**

# Appendix D

Erratum of West Coast Basin Watermaster Annual Report  
for July 1, 2021- June 30, 2022



Report Page No.	Original Text [Error Type]	Correction
1	Summary of Pertinent Data- Administrative Year 2021-2022 Adjudicated Rights Extractions: 30,581 Recycled Water Use by Parties: 17,107 af Total Water Use by Parties: 188,157 [Pumper Correction]	Summary of Pertinent Data- Administrative Year 2021-2022 Adjudicated Rights Extractions: 30,791 Recycled Water Use by Parties: 21,851 af Total Water Use by Parties: 193,111
14	Table 1- California Water Service Company (Dominguez) Total Pumping 2021-2022: 2,045.99 af [Pumper Correction]	Table 1- California Water Service Company (Dominguez) Total Pumping 2021-2022: 2,255.98 af
34	Appendix A- California Water Service Company (Dominguez) Extraction for May 2022 (SWN:004S013W11P002S): 0.00 af Total Extraction: 2,045.99 af [Pumper Correction]	Appendix A- California Water Service Company (Dominguez) Extraction for May 2022 (SWN:004S013W11P002S): 209.99 af Total Extraction: 2,255.98 af
20	Table 10- Leases Lease agreement not provided to staff prior to report approval. Copy of agreement was provided in January 2023. [Party Correction]	Table 10- Lease from Susan Engelsma to Myron Z Chlavin & Nettie Desser Trust & JHD Properties, LLC Lease w/ flex Ten-year lease: 7/1/2016 to 7/1/2026 Lease amount: 12.10 af of adjudicated right
24	Table 18- Recycled Water City of Torrance: 338.00 af Total Recycled Water: 17,107 af [Data Correction]	Table 18- Recycled Water City of Torrance: 5,082 af Total Recycled Water: 21,851 af