

WATERMASTER SERVICE

IN THE WEST COAST BASIN
LOS ANGELES COUNTY

July 1, 2023 - June 30, 2024

December 2024

**WEST COAST BASIN
WATER RIGHTS PANEL**



Prepared by the
Water Replenishment District of Southern California (WRD)
West Coast Basin Administrative Body
for the
West Coast Basin Watermaster Water Rights Panel
Adopted on
December 3, 2024

Contents

Summary of Pertinent Data	1
Introduction	2
Executive Summary	2
Background	2
Water Use	4
A. Adjudicated Extractions by Parties	4
B. Groundwater Storage Activities by Parties	4
C. Total Extraction Rights and Over-extractions	5
D. Extractions of Contaminated Groundwater	5
E. Extractions by Non-Parties	5
F. Extraction Exemptions	5
G. Adjudicated Rights Transfers	6
H. Exchange Pool	7
I. Extraction Wells	7
J. Meter Testing Program	7
Water Supply	9
A. Precipitation	9
B. Groundwater Recharge	9
C. In-Lieu Replenishment	10
D. Imported Water	10
E. Recycled Water	10
F. Total Water Use	10
G. Exported Water	10
H. Increased Extraction in the Central Basin for Certain Purveyors Serving Overlying Communities	10
I. Seawater Intrusion Barrier Projects	11
J. Groundwater Levels	11
Watermaster Costs and Budget	12

Tables

Table 1 - Water Rights Accounting (acre-feet)	14
Table 2 - Storage Accounting	17
Table 3 - Water Put into Storage	18
Table 4 - Water Extracted from Storage	18
Table 5 - Storage Transfers	18
Table 6 - Historical Storage Summary	19
Table 7 - Over-extractions	19
Table 8 - Non-Consumptive Water Use Permits	20
Table 9 - Extractions by Non-Parties	20
Table 10 - Leases (acre-feet)	21
Table 11 - Permanent Transfers (acre-feet)	22
Table 12 - Exchange Pool	23
Table 13 - Extraction Wells Completed	23
Table 14 - Extraction Wells Destroyed	23
Table 15 - Replenishment Operations	24
Table 16 - WRD In-Lieu Recharge	24
Table 17 - Imported Water Use	25
Table 18 - Recycled Water Use	26
Table 19 - Seawater Intrusion Barrier Project Operations	26
Table 20 - Apportionment of Budget Among Rights Holders	27

Figures

Figure 1 - West Coast Basin (groundwater production)	29
Figure 2 - Monthly Water Production (excludes non-consumptive use)	30
Figure 3 - West Coast Basin (showing key wells and facilities)	31
Figure 4 - Monthly Mean Precipitation	32
Figure 5 - Total Water Use	33
Figure 6 - Water Level Hydrographs	34

Appendices

Appendix A - Groudwater Extractions July 2023-June 2024	35
Appendix B - Succession of Adjudicated Rights as of June 2024	42
Appendix C - Parties to the Amended Judgment as of June 2024	50
Appendix D - Erratum of West Coast Basin Watermaster Annual Report for 2022-2023	52

Governance

2023- 2024 AY

West Coast Basin Administrative Body

Water Replenishment District

President

Joy Langford
Division 1

Vice-President

Rob Katherman
Division 2

Secretary

Vera Robles Dewitt
Division 5

Treasurer

Sergio Calderon
Division 4

Director

John D.S. Allen
Division 3

General Manager

Stephan Tucker

Storage Panel

Water Replenishment District
Board of Directors

West Coast Basin Water Rights Panel

West Coast Basin Water Rights Panel

Chair

Katherine Nutting
Golden State Water Company

Vice-Chair

Chuck Schaich
City of Torrance

Treasurer

Jeffrey Page
City of Manhattan Beach

Charles Campbell
Torrance Refining Company LLC

Ron Sorensen
California Water Service Company

Administrative Body Staff

Esther Valle Rojas

Jackie Ramirez

Asha Kreiling

Greg Osti

Tiffani Fong

Summary of Pertinent Data

Item	Administrative Year 2022 - 2023	Administrative Year 2023 - 2024
Parties	71	72
Rights Holders	56	56
Active pumpers	23	21
Active Non-Parties	0	0
Adjudicated Rights (acre-feet)	64,468.25	64,468.25
Water put into Storage (acre-feet)	0	0
Mean Precipitation (inches)	23.64	24.26
Injection at barrier projects (acre-feet)	18,703	21,029
Exported water use by Parties (acre-feet)	0	0
Watermaster Budget, total ¹	\$135,535	\$139,203
Adjudicated Rights Extractions (acre-feet) ²	32,415	36,897
Recycled water use by Parties (acre-feet)	22,259	21,512
Imported water use by Parties (acre-feet)	123,651	118,773
Total water use by Parties (acre-feet)	178,325	177,182

¹ For the 2023- 2024 AY, Water Rights Panel Assessment: \$0.00; Administrative Body Budget: \$139,203

² Excludes extractions by Parties with non-consumptive water use permits and by non-parties.

Introduction

Executive Summary

This Watermaster Annual Report, developed by the Administrative Body and adopted by the Water Rights Panel, summarizes information on groundwater extractions, storage accounts, use of imported water and recycled water, replenishment operations and the budget and finances of the West Coast Basin (Basin) Watermaster during the 2023-2024 administrative year (AY). This report complies with the provisions set forth in the West Basin Amended Judgment.

During the 2023-2024 AY, the Basin experienced a 14% increase in groundwater production from the previous AY. The production total does not include any water extracted under an exemption as described in Section F. The report is organized into three sections, including Water Use, Water Supply, and Watermaster Costs and Budget. In addition, the report provides various tables and figures describing the narrated information.

Background

The West Coast Basin underlies 160 square miles in the southwestern part of the coastal plain of Los Angeles County. Figure 1 shows the location and adjudicated boundaries of the Basin. The Basin is bounded on the west by the Santa Monica Bay, on the north by the Ballona Escarpment, on the east by the Newport-Inglewood Uplift, and on the south by the San Pedro Bay and the Palos Verdes Hills. Twenty incorporated cities and several unincorporated areas overlie the Basin.

An essential portion of the water needed by the residents and industries in the area overlying the Basin is pumped directly from groundwater stored in the Basins aquifers. In 1945, the intrusion of seawater caused by declining groundwater levels due to over pumping threatened the quality and quantity of the groundwater supply. In response to the seawater intrusion problem, legal action was initiated to halt the pumping overdraft and prevent further damage to the Basin. In 1955, the Superior Court of Los Angeles County (Court) appointed the Department of Water Resources (DWR) as the Watermaster to administer an Interim Agreement. Subsequently, in 1961, the Court retained the DWR as the Watermaster of the final West Coast Basin Adjudication (Judgment).

The Judgment has been amended multiple times since its inception. Noticeably, when the Judgment was amended on December 5, 2014 (Amended Judgment), for the first time, the Court allowed Parties to have direct input into how the Judgment is administered and enforced. Furthermore, the Amended Judgment confirmed the retirement of DWR as the Watermaster and established a new Watermaster structure.

The Watermaster structure includes three separate constituent bodies serving different functions: 1) an Administrative Body, 2) a Water Rights Panel, and 3) a Storage Panel. The Administrative Body was appointed by the Court to perform the Watermaster accounting and reporting functions.

The WRD was appointed to fulfill this role. The Water Rights Panel enforces issues related to the pumping rights within the adjudications and is composed of five Basin adjudicated rights holders. The Storage Panel is comprised of the Water Rights Panel and the WRD Board of Directors, which together approve certain groundwater storage efforts.

The Watermaster assists the Court in the administration and enforcement of the provisions of the Judgment. Among other duties, the Watermaster monitors groundwater levels, extractions, storage, and reports significant water-related events.

Water Use

A. Adjudicated Extractions by Parties

The Judgment limits the amount of groundwater each Party with water rights may extract annually from the Basin. This limit is referred to as an “adjudicated right” or “AR”. The AR for each Party is listed in Table 1. Parties are required to report water extractions to the Administrative Body each month (or quarterly for small producers). Appendix A lists, by Party, the volume of groundwater extracted each month from each active well in the Basin. Figure 1 illustrates the variation of groundwater production by three distinct production classifications: less than 500 acre-feet per year (afy), 500 to 2,000 afy, and more than 2,000 afy, during the 2023-2024 AY. In addition, Figure 2 shows monthly water production (excluding non-consumptive use) for the 2023-2024 AY totaling 36,897.37 acre-feet (af), which is a 14% increase from the previous AY.

To provide flexibility regarding water rights, the Judgment contains provisions, such as “carryover,” which allows each Party to carry over into the succeeding administrative year 100% of their unused AR plus or minus (+/-) available leases with flex. Furthermore, the amount of available carryover is reduced by the amount of stored water held by the Party. Yet, per the Amended Judgment, such reduction will not cause the amount of carryover to be less than 20% of a Party’s total AR (including leases with flex). This type of provision is in-place to meet unforeseen water demands.

B. Groundwater Storage Activities by Parties

The Judgment permits Parties with water rights to store water in the Basin for future use. Pursuant to Section V.3.(B) of the Judgment, Parties can convert their carryover to storage upon payment of the Replenishment Assessment to WRD.

Table 2 describes storage accounting, specifically the total carryover from the 2022-2023 AY, storage activity for the 2023-2024 AY (transfers, water put into storage, water extracted from storage, and balances), and total carryover balance into the ensuing AY. Table 3 lists the total quantity of water put into storage. There was no water put into storage and no storage extractions during the 2023-2024 AY (Table 4).

The Judgment allows the transfer of stored water between Parties. However, there were no storage transfers in the 2023-2024 AY (Table 5).

Table 6 shows a historical storage summary from 2014-2015 to 2023-2024 AY, including water put into storage, storage extractions, storage balance, and the available adjudicated storage capacity.

C. Total Extraction Rights and Over-extractions

Parties with water rights have a total extraction right, which is the maximum amount of groundwater that can be extracted in a single AY. In the West Coast Basin, Parties with one-year carryover and/or storage rights are allowed to extract up to 120% of the sum of their AR plus or minus (+/-) leased water. For example, if a Party has an AR of 1,000 af, 400 stored water rights, and leases an additional 200 af, their maximum yearly total extraction would be calculated as follows: $(1,000 + 200) \times 1.2 = 1,440$ af. Parties without one-year carryover or storage rights can over-extract 10% of their AR plus or minus (+/-) leased water or 2 af, whichever is greater. Under certain circumstances, a Party may be allowed extraction in a greater amount; however, prior approval must be obtained from the West Coast Basin Storage Panel. Any Party that exceeds their total extraction right without prior approval from Watermaster is in violation of the Judgment.

Any over-extraction, which is the difference between total rights and total extraction, is deducted from that Party's subsequent administrative year's AR. Watermaster will notify a Party when they are in violation of the Judgment and/or over-extracts.

During the 2023-2024 AY, there were no over-extractions (Table 7).

D. Extractions of Contaminated Groundwater

A Party that is a water rights holder may petition the Administrative Body (WRD) for a Non-Consumptive Water Use Permit (NCWUP) as part of a project to remediate or ameliorate groundwater contamination. If the petition is granted, the Party may extract the groundwater without it counting against its production rights, so long as the conditions of the Judgment are met. A non-Party may extract contaminated groundwater for cleanup purposes by partnering with a Party who obtains the NCWUP and then assigns it to the non-Party. Table 8 lists current NCWUPs issued by WRD and the amounts of groundwater extracted under those permits.

In the 2023-2024 AY, there were three NCWUP with a total of 68.41 af of non-consumptive water use extractions. Appendix A reports the extractions monthly by well. Negative values listed in Appendix A represent a net re-injection of water produced.

E. Extractions by Non-Parties

In the 2023-2024 AY there were no extractions by Non-Parties reported, not including NCWUPs (Table 9).

F. Extraction Exemptions

The Court approved an amendment to the Judgment during the 2018-2019 AY, which adds Section V.15, which allows for the extraction of non-potable groundwater by agencies with no AR. Specifically, extractions of groundwater are only permitted if all the following criteria are satisfied:

1. Only groundwater containing at least 500 milligrams/liter of chloride, as measured at the influent to any facility used to treat such water, may be extracted.

2. Extractions must be done by a public agency with statutory authority to clean contaminated groundwater.
3. Extractions of such groundwater must provide a "Regional Benefit" (as defined in Section II.27. of the Judgment) to the Basin as a whole and not just to the extracting Party.
4. All extractions pursuant to the new Paragraph V.15 are subject to the payment of WRD's Replenishment Assessment.

In addition, all new projects seeking an extraction exemption must be reviewed (as set forth in Section V.13 of the Judgment) and approved by the Water Rights Panel and WRD in its capacity as the Administrative Body. The Water Rights Panel and WRD must ensure that the project is technically feasible and will not cause material physical harm (as defined in Section II.21 of the Judgment) to the Basin. In addition, all approved extraction exemption projects must provide annual reporting in response to the required criteria.

During the 2023-2024 AY, WRD had a total production of 4,236.43 af under the approved exemption received in 2018 for the Goldsworthy Desalter (Appendix A). In accordance with the terms of the exemption permit, the average chloride level at the influent remained above 500 Omilligrams/liter. There were no additional extraction exemption requests submitted during the AY.

G. Adjudicated Rights Transfers

Each year, ARs are transferred between Parties through leases (temporary transfers) and change of ownership (permanent transfers) transactions. Table 10 shows transfers of AR through leases, specifically the Parties involved, transaction type (leases with and without flex), amount, and recordation date. During the 2023-2024 AY there were seven leases that transferred a total of 3,727.60 af (six leases with flex and one without). Leases with flex transfer both the pumping right and associated carryover rights to the lessee for the term stated within the lease agreement.

In transferring water rights, Parties must specify (1) the type of right (i.e., adjudicated rights, one-year carryover, or drought carryover), (2) the amount of right to the nearest 0.01 af, and (3) the period of the lease, if applicable. Moreover, all leases must be made on an AY basis and must be executed by the Parties and received by the Administrative Body no later than one month and 15 days following the end of the AY in which the lease is effective.

Permanent transfers of water rights must be documented accordingly. Specifically, when land is sold, in which a water right has been developed, the Administrative Body must receive a copy of the transfer document if the water right is also transferred. Water rights do not automatically pass to the new landowner unless the transfer document specifies the transfer of water rights and the exact amount of the water right that was transferred with the land. Watermaster maintains a template for a Deed of Water Rights - Permanent Transfer transaction on its website to ensure the information provided on the transfer document is sufficient. In AY 2023-2024, there was a name change from McDonnell Douglas Corporation to Boeing Company who is the legal successor of 1.70 af of AR and 1.70 af of carryover, by virtue of a merger resulting in overall permanent transfer of 3.40 af (Table 11).

For 2023-2024 AY, there was 72 Parties to the Judgment (individuals or entities that have a water right, privilege or obligation to the Judgment), which increased by one compared to the prior year, there was a new Party to the Judgment, SCI Funeral California Services. There are 56 rights holders, which is unchanged from the prior year, water rights were transferred from one party to another. Appendix B shows the succession of ARs in the Basin. In addition, Appendix C lists current Parties to the Judgment, Water Rights Holders, and Non-Parties with water rights.

H. Exchange Pool

The Judgment authorizes an Exchange Pool to provide additional water rights to Parties without sufficient water. If a Party's estimated water requirement for the following fiscal year exceeds its total available water supply, that Party may purchase additional water from the Exchange Pool. There were no requests for Exchange Pool water during the 2023-2024 AY (Table 12).

I. Extraction Wells

Seventy-four (74) wells had reported extractions in 2023-2024 AY, which is three more than the previous AY. The locations of the extraction wells are shown on Figure 1 by three distinct production classifications. Furthermore, according to information provided to Watermaster, there was no extraction wells completed (Table 13) and no extraction wells destroyed in 2023-2024 AY (Table 14).

J. Meter Testing Program

Accurate measurement of groundwater extractions is essential for the successful management of groundwater. Therefore, Watermaster requires an operative water meter to be installed at each extraction well. It is the responsibility of each Party to ensure that its meter and testing facilities are installed properly and are maintained in good working condition. It is the goal of Watermaster to test the water meter at each active extraction well at least once every two years or when a Party requests a meter calibration. Watermaster tests meters by volumetric or pitot tube comparisons or other methods, as appropriate. Watermaster notifies a Party that they must repair or replace their meter when the meter registers beyond five percent accuracy. If the registration accuracy of the meter deviates by more than five percent, Watermaster may revise the well production amount.

The meter testing program is managed by the Water Rights Panel who has contracted with Golden Meters Service Inc to complete testing. During the 2023-2024 AY, Golden Meters performed forty-four (44) meter tests. Tests showed that two meters did not pass, which means that the meters were more than five percent fast or slow.

This page intentionally left blank

Water Supply

A. Precipitation

Precipitation over the Basin has relatively minimal direct influence on the replenishment of the groundwater in the Basin. This is a result of the low soil permeability that characterizes much of the Basin and large impermeable surfaces (i.e. pavement and buildings). However, during the years of high rainfall, increased runoff from the areas upstream can result in increased replenishment to the Basin and a decreased groundwater demand by water users, which can result in lower rates of groundwater extraction from the Basin.

During the 2023-2024 AY, the following amounts of rainfall were measured at three precipitation stations:

- 22.21 inches at Los Angeles International Airport
- 23.77 inches at Long Beach Airport
- 26.80 inches at Torrance Airport

Figure 3 shows the location of the precipitation stations and other key facilities, and Figure 4 shows the monthly precipitation average measured at the three stations. Based on the total rainfall measured, the mean precipitation in the West Coast Basin was 24.26 inches (Figure 4), which is 196% of the long-term mean of 12.4 inches. The mean precipitation for 2023-2024 AY increased by 0.62 inches compared to the previous AY.

B. Groundwater Recharge

Replenishment of the Basin occurs primarily by injection of imported and recycled water into the West Coast and Dominguez Gap Seawater intrusion barriers located along the coast, and underflow from the Central Basin to the east and Santa Monica Basin to the north. As mentioned above, minimal rainfall over the Basin infiltrates into deeper aquifers of the Basin.

Water spread in the Central Basin percolates into the aquifers and, eventually, some groundwater crosses the Newport-Inglewood Uplift to replenish the groundwater in the West Coast Basin. Although the recharge water is not directly applied to the West Coast Basin, this recharge process returns large quantities of water to the Basin by substantially increasing the natural subsurface flow from the Central Basin to the West Coast Basin. Table 15 shows the source and quantity of water replenished in the Montebello Forebay area of the Central Basin for the 2022-2023 AY and the 2023-2024 AY. Specifically, for the fifth consecutive year, WRD purchased zero af of imported water for spreading in the Montebello Forebay.

Water injected in the seawater intrusion barrier projects also contributes significantly to the replenishment of the Basin (see Section I, Seawater Intrusion Barrier Projects).

C. In-Lieu Replenishment

During the 1965-1966 water year, WRD, in cooperation with the MWD, began an in-lieu replenishment program, where discounted imported water was offered seasonally due to availability. WRD contracted with producers having access to supplemental imported water that could be used in lieu of extracting groundwater from the Basin to reduce overall pumping impacts. However, due to water shortages and other reasons, MWD discontinued their discounted seasonal imported water in 2011 and as a result, WRD generally suspended its in-lieu replenishment program except under special circumstances. There was no in-lieu recharge in 2023-2024 AY (Table 16).

D. Imported Water

Imported water has been the largest component of supply for the Basin since the mid-1950s. Water is imported from Northern California via the State Water Project and the Colorado River and is made available to water users by MWD through its member agencies: City of Long Beach, West Coast Basin Municipal Water District, City of Torrance, and the City of Los Angeles. Table 17 lists imported water for direct use by source, Party, and quantity. During the 2023-2024 AY, a total of 118,773 af of water was imported, which is a 4,878 af decrease from the previous AY.

E. Recycled Water

Table 18 shows that 21,512 af of recycled water was used in the area overlying the Basin during the 2023-2024 AY, not including WRD replenishment water. This amount is 747 af or 3% less than the previous AY.

F. Total Water Use

Figure 5 shows the total water use in the Basin during the 2023-2024 AY, including extracted groundwater, imported water and recycled water for direct use.

G. Exported Water

No groundwater was exported from the Basin. California Water Service Company exported purchased imported water from the Basin to portions of its service area in the Palos Verdes Hills.

H. Increased Extraction in the Central Basin for Certain Purveyors Serving Overlying Communities

Per Section IV.K of the Central Basin Third Amended Judgment, "certain purveyors" are Parties to both the Central Basin Third Amended Judgment and West Coast Basin Judgment and serve communities overlying both the Central and West Coast Basins. These purveyors include the City of Los Angeles, Golden State Water Company, and California Water Service Company and are allowed to increase their extraction in the Central Basin beyond their Allowed Pumping Allocation, which is the amount of groundwater each Party may extract annually. However, the increased extraction is counted against their AR in the West Coast Basin. Increased extractions are limited to 5,000 af per AY. There were no increased extractions during the 2023-2024 AY.

I. Seawater Intrusion Barrier Projects

The Los Angeles County Department of Public Works operates two barrier projects, the West Coast Basin Barrier, and the Dominguez Gap Barrier, within the Basin. The barriers are designed to prevent seawater intrusion into the freshwater aquifers of the Basin. Table 19 shows the quantities of imported and recycled water injected into the two barrier projects. In the 2023-2024 AY, 21,029 af of water were injected into these two barrier systems, which is a 12% increase from the previous AY. The location of the two barriers systems is illustrated in Figure 3.

J. Groundwater Levels

Figure 3 shows the location and water level elevations in the key wells located in the Basin. Figure 6 shows the water level elevations at the key wells. More detailed information regarding groundwater levels in the Basin is provided in the WRD's Annual Engineering Survey and Report and Regional Groundwater Monitoring Report. These reports are available on WRD's website.

Watermaster Costs and Budget

To fund Watermaster activities, both the Administrative Body and the Water Rights Panel can levy an annual assessment on water rights holders under the terms of the Judgment.

The Administrative Body charges a flat fee of twenty dollars (\$20) to each rights holder. In addition, the remaining amount of the Administrative Body budget is charged to all rights holders based upon their proportional ownership of AR. For 2023-2024 AY, the Watermaster budget for the Administrative Body was \$139,203, which is an increase of 3% from the previous AY. Any increase to the Administrative Body budget must be approved by the Water Rights Panel.

The Water Rights Panel assessment is charged to all water rights holders. The Panel waived their assessment this AY. Table 20 lists the budget summary for the 2023-2024 AY.

This page intentionally left blank

Table 1 – Water Rights Accounting (acre-feet)

Party/Water Rights Holder	AR 2023-2024 ¹	Net Carryover ² from 2022- 2023	Leases ³		Storage ⁴	Increased Extractions ⁵	Total Rights ⁶	Total Production ⁷	Balance ⁸	Allowable Carryover into 2024-2025		
			with Flex	w/o Flex						Drought ⁹	Normal	Total
ABC Nursery	24.10	24.10	0.00	0.00	0.00	0.00	48.20	12.00	36.20	0.00	24.10	24.10
Asahi Fancy Koi	2.00	34.20	0.00	0.00	0.00	0.00	36.20	0.00	36.20	32.20	2.00	34.20
Automation Industries	0.70	4.10	0.00	0.00	0.00	0.00	4.80	0.00	4.80	3.40	0.70	4.10
Boeing Company	1.70	1.70	0.00	0.00	0.00	0.00	3.40	0.00	3.40	0.00	1.70	1.70
Cal. Water Service Co.	4,070.00	4,030.00	0.00	0.00	0.00	0.00	8,100.00	1,020.86	7,079.14	0.00	4,070.00	4,070.00
Cal. Water Service Co. Dominguez	10,417.45	10,417.45	0.00	0.00	0.00	0.00	20,834.90	6,494.85	14,340.05	0.00	10,417.45	10,417.45
Cal. Water Service Co./Hawthorne Lease	0.00	1,882.00	1,882.00	0.00	0.00	0.00	3,764.00	599.76	3,164.24	0.00	1,882.00	1,882.00
Carson-Harbor Village Mobile Home Park	7.00	7.00	0.00	0.00	0.00	0.00	14.00	0.00	14.00	0.00	7.00	7.00
Carson-Madrona Co.	104.00	104.00	0.00	0.00	0.00	0.00	208.00	0.00	208.00	0.00	104.00	104.00
CBS, Inc.	9.50	9.50	0.00	0.00	0.00	0.00	19.00	0.00	19.00	0.00	9.50	9.50
Century Builders	4.70	4.70	0.00	0.00	0.00	0.00	9.40	0.00	9.40	0.00	4.70	4.70
Chandler Palos Verdes Sand & Gravel Co	4.20	4.20	0.00	0.00	0.00	0.00	8.40	0.00	8.40	0.00	4.20	4.20
Chevron USA	4,601.30	4,601.30	0.00	0.00	0.00	0.00	9,202.60	0.00	9,202.60	0.00	4,601.30	4,601.30
Coastline Church of Christ	0.70	4.10	0.00	0.00	0.00	0.00	4.80	0.00	4.80	3.40	0.70	4.10
Curtis, Owen W	0.36	3.08	0.00	0.00	0.00	0.00	3.44	0.00	3.44	2.72	0.36	3.08
Delaney, Golda Estate of	4.10	14.30	0.00	0.00	0.00	0.00	18.40	0.00	18.40	10.20	4.10	14.30
Eco Services Operations	521.00	521.00	0.00	0.00	0.00	0.00	1,042.00	670.21	371.79	0.00	371.79	371.79
El Segundo, City	953.00	953.00	0.00	0.00	0.00	0.00	1,906.00	0.00	1,906.00	0.00	953.00	953.00
Engelsma, Susan Trust	12.10	0.00	-12.10	0.00	0.00	0.00	0.00	0.00	0.00	0.00	0.00	0.00
Evergreen America Corp.	5.40	5.40	0.00	0.00	0.00	0.00	10.80	0.00	10.80	0.00	5.40	5.40
Fujimoto, SR. & St & JK	20.00	32.28	0.00	0.00	0.00	0.00	52.28	0.00	52.28	12.28	20.00	32.28
Gillingham, Florence R	2.40	2.40	0.00	0.00	0.00	0.00	4.80	0.00	4.80	0.00	2.40	2.40
Golden State Water Co.	7,502.24	4,205.63	300.00	0.00	3,300.00	0.00	15,307.87	9,231.32	6,076.55	3.39	2,773.16	2,776.55
Hawthorne, City	1,882.00	0.00	-1,882.00	0.00	0.00	0.00	0.00	0.00	0.00	0.00	0.00	0.00
Hillside Memorial Park	104.10	9.76	0.00	0.00	0.00	0.00	113.86	102.33	11.53	0.00	11.53	11.53
Hollywood Park Land Co.	282.00	0.00	-282.00	0.00	0.00	0.00	0.00	0.00	0.00	0.00	0.00	0.00

Party/Water Rights Holder	AR 2023-2024 ¹	Net Carryover ² from 2022- 2023	Leases ³		Storage ⁴	Increased Extractions ⁵	Total Rights ⁶	Total Production ⁷	Balance ⁸	Allowable Carryover into 2024-2025		
			with Flex	w/o Flex						Drought ⁹	Normal	Total
Honeywell International	22.50	22.50	0.00	0.00	0.00	0.00	45.00	0.00	45.00	0.00	22.50	22.50
Honold, Kristin Brandsma	11.80	11.80	0.00	0.00	0.00	0.00	23.60	0.00	23.60	0.00	11.80	11.80
Inglewood Park Cemetery	0.00	35.00	0.00	0.00	0.00	0.00	35.00	0.00	35.00	35.00	0.00	35.00
Inglewood, City	4,449.89	4,731.89	282.00	0.00	0.00	0.00	9,463.78	1,669.81	7,793.97	0.00	4,731.89	4,731.89
Kinder Morgan Liquids Terminals	167.00	167.00	0.00	0.00	0.00	0.00	334.00	36.71	297.29	0.00	167.00	167.00
L.A. County Department of Parks & Rec	363.70	167.84	0.00	0.00	0.00	0.00	531.54	191.36	340.18	0.00	340.18	340.18
L.A. County Sanitation Districts-JWPCP	102.00	102.00	0.00	-82.00	0.00	0.00	122.00	0.00	122.00	0.00	102.00	102.00
Leuzinger, Emma L Estate of	1.40	5.90	0.00	0.00	0.00	0.00	7.30	0.00	7.30	4.50	1.40	5.90
Lockheed Martin Corporation	0.10	0.10	0.00	0.00	0.00	0.00	0.20	0.00	0.20	0.00	0.10	0.10
Lomita, City	1,352.00	1,202.00	-450.00	0.00	0.00	0.00	2,104.00	0.00	2,104.00	0.00	902.00	902.00
Long Beach, City	0.70	0.70	0.00	82.00	0.00	0.00	83.40	56.29	27.11	0.00	0.70	0.70
Lopes, Frank	3.70	13.10	0.00	0.00	0.00	0.00	16.80	0.00	16.80	9.40	3.70	13.10
Los Angeles, City	1,503.00	1,503.00	0.00	0.00	0.00	0.00	3,006.00	0.00	3,006.00	0.00	1,503.00	1,503.00
Loyola Marymount University	48.10	48.10	0.00	0.00	0.00	0.00	96.20	0.00	96.20	0.00	48.10	48.10
Manhattan Beach, City	1,131.20	226.24	0.00	0.00	2,262.40	0.00	3,619.84	139.53	3,480.31	0.00	226.24	226.24
Montrose Chemical Corp.	1.20	1.20	0.00	0.00	0.00	0.00	2.40	0.00	2.40	0.00	1.20	1.20
Mori, Roy H and Kenji	3.60	12.80	0.00	0.00	0.00	0.00	16.40	0.00	16.40	9.20	3.60	12.80
Myron Z Chlavin & Nettie Desser Trust & JHD Properties	0.00	12.10	12.10	0.00	0.00	0.00	24.20	0.00	24.20	0.00	12.10	12.10
Northrop Corporation	38.15	38.15	0.00	0.00	0.00	0.00	76.30	0.00	76.30	0.00	38.15	38.15
Nozaki, Sumikichi	7.00	7.00	0.00	0.00	0.00	0.00	14.00	0.00	14.00	0.00	7.00	7.00
Pacific Crest Cemetery Co. ¹⁰	0.00	-3.92	0.00	0.00	0.00	0.00	-3.92	0.00	-3.92	0.00	-3.92	-3.92
Palos Verdes Begonia Farm	0.00	7.40	0.00	0.00	0.00	0.00	7.40	0.00	7.40	7.40	0.00	7.40
Phillips 66 Co.	6,170.00	6,957.78	0.00	0.00	0.00	0.00	13,127.78	4,451.77	8,676.01	787.78	6,170.00	6,957.78
Rehor, Josephine P	2.20	2.20	0.00	0.00	0.00	0.00	4.40	0.00	4.40	0.00	2.20	2.20
Rolling Hills Country Club	290.00	224.00	0.00	0.00	0.00	0.00	514.00	275.00	239.00	0.00	239.00	239.00
Roman Catholic Archbishop	72.30	222.30	150.00	0.00	0.00	0.00	444.60	103.69	340.91	0.00	222.30	222.30
SCI California Funeral Services Inc	39.40	39.40	0.00	0.00	0.00	0.00	78.80	30.77	48.03	0.00	39.40	39.40

Party/Water Rights Holder	AR 2023-2024 ¹	Net Carryover ² from 2022- 2023	Leases ³		Storage ⁴	Increased Extractions ⁵	Total Rights ⁶	Total Production ⁷	Balance ⁸	Allowable Carryover into 2024-2025		
			with Flex	w/o Flex						Drought ⁹	Normal	Total
Shell Oil Company	1,019.50	0.00	-1,019.50	0.00	0.00	0.00	0.00	0.00	0.00	0.00	0.00	0.00
Southern California Edison Co.	57.10	63.32	0.00	0.00	0.00	0.00	120.42	19.60	100.82	6.22	57.10	63.32
Tesoro Refining & Marketing Co., LLC	8,741.00	8,913.99	1,019.50	0.00	0.00	0.00	18,674.49	8,817.17	9,857.32	0.00	9,760.50	9,760.50
Torrance Refining Company LLC	2,596.40	2,626.83	0.00	0.00	0.00	0.00	5,223.23	1,042.86	4,180.37	30.43	2,596.40	2,626.83
Torrance, City	5,638.86	1,127.77	0.00	0.00	11,277.20	0.00	18,043.83	1,931.48	16,112.35	0.00	1,127.77	1,127.77
Vukelich, Mike ¹⁰	10.00	-11.08	0.00	0.00	0.00	0.00	-1.08	0.00	-1.08	0.00	-1.08	-1.08
Watson Land Co.	80.20	80.20	0.00	0.00	0.00	0.00	160.40	0.00	160.40	0.00	80.20	80.20
Wiseburn School Dist.	8.20	8.20	0.00	0.00	0.00	0.00	16.40	0.00	16.40	0.00	8.20	8.20
TOTAL:	64,468.25	55,442.01	0.00	0.00	16,839.60	0.00	136,749.86	36,897.37	99,852.49	957.52	53,691.82	54,649.34

¹ AR - Adjudicated Rights

² Net Carryover is the sum of all carryover (drought and one-year) from the previous year AY 2022-2023 less the amount of carryover conversion for the current AY 2023-2024. See Table 3 for carryover conversion (water put into storage) per party for AY 2023-2024.

³ See Table 10 for information concerning leases. Leases with flex include carryover provisions.

⁴ Storage includes carryover conversions for AY 2023-2024. See Table 2 for a summary of all Storage Accounting per party.

⁵ Increased Extraction: Section IV(K) of the Central Basin Judgment permits increased extraction rights through use of up to 5,000 af of certain Parties' West Basin Rights in the Central Basin

The aforementioned Parties include City of Los Angeles, Golden State Water Company, and California Water Service Company.

⁶ Total Rights = Adjudicated Rights + Net Carryover + Leases + Storage + Increased Extraction.

⁷ Total Production column does not include storage withdrawals (Table 4), which totaled zero for AY 2023-2024.

⁸ Balance = Total Rights - Amount Pumped

⁹ Drought = drought carryover created in 1991.

¹⁰Negative One-Year Carryover will be deducted from the subsequent year's AR.

Table 2 - Storage Accounting

Party	Carryover from 2022- 2023		2023-2024 Storage Activity								
			Transfers		Water Extracted		Water put into Storage		Balance		
	ISA ¹	CSP ²	ISA	CSP	ISA	CSP	ISA	CSP	ISA	CSP	Total
Golden State Water Co.	3,000.90	299.10	-	-	-	-	-	-	3,000.90	299.10	3,300.00
Manhattan Beach, City	452.48	1,809.92	-	-	-	-	-	-	452.48	1,809.92	2,262.40
Torrance, City	2,255.54	9,021.66	-	-	-	-	-	-	2,255.54	9,021.66	11,277.20
Total	5,708.92	11,130.68	-	-	-	-	-	-	5,708.92	11,130.68	16,839.60

¹ Individual Storage Account.

² Community Storage Pool.

Table 3 - Water Put into Storage

Party	Quantity (acre-feet)	ISA ¹	CSP ²	Storage Method ³	Date
There were no storage transactions in the 2023-2024 AY.					

Table 4 - Water Extracted from Storage

Party	Quantity (acre-feet)	Storage Account	Date
No stored water was extracted in the 2023-2024 AY.			

Table 5 - Storage Transfers

Party	Quantity (acre-feet)	Storage Account	Date
No stored water was transferred in the 2023-2024 AY.			

¹ ISA = Individual Storage Account

² CSP = Community Storage Pool

³ CC = Carryover Conversion

Table 6 – Historical Storage Summary

Year	Water Put into Storage Transfers			Water Extracted from Storage			Storage Balance			Available Adjudicated Storage Capacity		
	ISA ¹	CSP ²	Total	ISA	CSP	Total	ISA	CSP	Total	ISA	CSP	Total
2014-15	1,097.77	0.00	1,097.77	0.00	0.00	0.00	1,097.77	0.00	1,097.77	24,702.23	35,500.00	60,202.23
2015-16	1,157.77	1,917.16	3,074.93	0.00	0.00	0.00	2,255.54	1,917.16	4,172.70	23,544.46	33,582.84	57,127.30
2016-17	3,000.90	1,765.10	4,766.00	0.00	0.00	0.00	5,256.44	3,682.26	8,938.70	20,543.56	31,817.74	52,361.30
2017-18	452.48	2,756.42	3,208.90	0.00	0.00	0.00	5,708.92	6,438.68	12,147.60	20,091.08	29,061.32	49,152.40
2018-19	0.00	1,127.70	1,127.70	0.00	0.00	0.00	5,708.92	7,566.38	13,275.30	20,091.08	27,933.62	48,024.70
2019-20	0.00	1,308.90	1,308.90	0.00	0.00	0.00	5,708.92	8,875.28	14,584.20	20,091.08	26,624.72	46,715.80
2020-21	0.00	1,127.70	1,127.70	0.00	0.00	0.00	5,708.92	10,002.98	15,711.90	20,091.08	25,497.02	45,588.10
2021-22	0.00	1,127.70	1,127.70	0.00	0.00	0.00	5,708.92	11,130.68	16,839.60	20,091.08	24,369.32	44,460.40
2022-23	0.00	0.00	0.00	0.00	0.00	0.00	5,708.92	11,130.68	16,839.60	20,091.08	24,369.32	44,460.40
2023-24	0.00	0.00	0.00	0.00	0.00	0.00	5,708.92	11,130.68	16,839.60	20,091.08	24,369.32	44,460.40

Table 7 – Over-extractions

Party	AR	Carryover and/or Stored Water	Max Allowable Extraction ³	Total Rights ⁴	Amount Pumped	Over-extraction ⁵	Judgment Violation
There were no over-extractions in 2023-2024 AY.							

¹ ISA = Individual Storage Account² CSP = Community Storage Pool³ Max Allowable Extraction: if a Party has carryover or stored water, they are allowed to extract up to 120% of AR +/- leases and not be in violation of the Judgment; if they do not have carryover and/or stored water, they are allowed to over-extract 10% of AR +/- leases or 2 af AR, whichever is greater.⁴ Total Rights= AR + carryover + leases⁵ Over-extraction= Total Rights - Amount Pumped

Table 8 - Non-Consumptive Water Use Permits

Party	WRD Resolution No.	Description	2023-2024 Extraction ¹
Montrose Chemical Corporation ²	23-1203	Allowed to extract 1,300.00 AF per year during the period of July 1, 2012 through June 30, 2063.	-2.78
Shell Oil Company	23-1208	Allowed to extract 241.00 AF per year during the period of July 1, 2023 through June 30, 2028	71.19
Honeywell International Inc	24-1231	Allowed to extract 44.55 AF per year during the period of April 14, 2024 through April 15, 2029	0.00
Total			68.41

Table 9 - Extractions by Non-Parties

Non-Party	Amount Pumped (acre-feet)
No extractions by Non-Parties in the 2023-2024 AY.	

¹ Negative numbers indicate net re-injection of treated water.

² DWR issued Montrose Chemical Corporation the Non-Consumptive Water Use Permit on November 14, 2012.

Table 10 – Leases (acre-feet)

Party	Transaction Type ¹	Amount	Recordation Date		Party	Net Amount
California Water Service Company (Hawthorne)	Lease with flex	1,882.00	02/01/13	FROM	Hawthorne City of	1,882.00
Susan Engelsma Trust	Lease with flex	-12.10	01/24/23	TO	Myron Z Chlavin & Nettie Desser Trust & JHD Properties LLC	-12.10
Golden State Water Company	Lease with flex	300.00	07/31/24	FROM	Lomita, City of	300.00
Hawthorne City of	Lease with flex	-1,882.00	02/01/13	TO	California Water Service Company (Hawthorne)	-1,882.00
Hollywood Park Land Company LLC	Lease with flex	-282.00	06/23/22	TO	Inglewood, City of	-282.00
Inglewood, City of	Lease with flex	282.00	06/23/22	FROM	Hollywood Park Land Company LLC	282.00
Lomita, City of	Lease with flex	-300.00	07/31/24	TO	Golden State Water Company	
Lomita, City of	Lease with flex	-150.00	07/31/24	TO	Roman Catholic Archbishop of Los Angeles	-450.00
Long Beach, City	Lease	82.00	10/31/23	FROM	Los Angeles County Sanitation Districts-JWPCP	82.00
Los Angeles County Sanitation Districts-JWPCP	Lease	-82.00	10/31/23	TO	Long Beach, City of	-82.00
Myron Z Chlavin & Nettie Desser Trust & JHD Properties LLC	Lease with flex	12.10	01/24/23	FROM	Susan Engelsma Trust	12.10
Roman Catholic Archbishop of Los Angeles	Lease with flex	150.00	07/31/24	FROM	Lomita, City of	150.00
Shell Oil Company	Lease with flex	-1,019.50	09/20/22	TO	Tesoro Refining and Marketing Company	-1,019.50
Tesoro Refining and Marketing Company	Lease with flex	1,019.50	09/20/22	FROM	Shell Oil Company	1,019.50
Total Leased Volume		3,727.60				

¹ Leases with flexibility or "flex" transfers both the pumping right and associated carryover rights to the lessee, meaning if the party who leases in the rights "with flex" is allowed to carryover into the next AY any unused rights from the lease under the terms of the Judgment.

Table 11 – Permanent Transfers (acre-feet)

Party	Transaction Type	Amount	Recordation Date	Party	Net Amount
Boeing Company	Transfer of OYC	1.70	3/25/2024	McDonnell Douglas Corp	
Boeing Company	Transfer of AR	1.70	3/25/2024	McDonnell Douglas Corp	3.40
McDonnell Douglas Corp ¹	Transfer of OYC	-1.70	3/25/2024	Boeing Company	
McDonnell Douglas Corp ¹	Transfer of AR	-1.70	3/25/2024	Boeing Company	-3.40
				Total APA Transfers:	1.70
				Total Carryover Transfers:	1.70
				Total Change of Ownership:	3.40

¹ There was a name change from McDonnell Douglas Corporation to Boeing Company who is the legal successor of 1.70 af of AR and 1.70 af of carryover, by virtue of a merger resulting in overall permanent transfer of 3.40 af.

Table 12 - Exchange Pool

Party	AR	Required Offer	Actual Offer	Amount Sold	Payment Due Exchanger
No requests for the Exchange Pool Program in the 2023-2024 AY.					

Table 13 - Extraction Wells Completed

Party	Recordation No.	State Well No.	Owner Designation
No extraction wells reported completed in the 2023-2024 AY.			

Table 14 - Extraction Wells Destroyed

Party	Recordation No.	State Well No.	Owner Designation
No extraction wells reported destroyed in the 2023-2024 AY.			

Table 15 – Replenishment Operations

Water spread in the Montebello Forebay area of the Central Basin provides subsurface recharge to the West Coast Basin.

Source of Water	Quantity (acre-feet)	
	2022- 2023	2023-2024
Local Runoff	174,411	146,060
Recycled Water:		
Whittier Narrows Water Reclamation Plant	8,401	8,278
San Jose Water Reclamation Plant	32,714	33,268
Pomona Water Reclamation Plant	3,458	2,931
Advanced Treated Water:		
Albert Robles Center Advanced Water Treatment Plant	5,059	7,722
MWD untreated Tier 1 water purchased by WRD	0	0
Make-up water from Upper San Gabriel Basin	0	0
Total	224,043	198,259

Table 16 – WRD In-Lieu Recharge

Party	In-Lieu Amount (acre-feet)
No in-lieu recharge in the 2023-2024 AY.	

Table 17 - Imported Water Use

Source of Water	Party/Entity	Quantity (acre-feet)	
		2022- 2023	2023-2024
Colorado River and State Water Project	Long Beach, City of ¹	18,735	19,161
Colorado River and State Water Project	West Basin Municipal Water District:		
	California American Water Company	1,017	1,027
	California Water Service Company ²	8,731	8,653
	California Water Service Company (Dominguez)	19,825	17,906
	California Water Service Company (Hawthorne Lease)	3,241	3,048
	El Segundo, City of	6,214	6,316
	Golden State Water Company	13,020	9,724
	Inglewood, City of	5,913	6,122
	Lomita, City of	1,812	1,831
	Manhattan Beach, City of	3,766	4,133
	West Basin MWD Subtotal	63,539	58,760
Colorado River and State Water Project	Torrance, City of	14,346	13,128
Owens River-Mono Basin, Colorado River, and State Water Project	Los Angeles, City of	25,441	25,774
Central Basin Groundwater	California-American Water Company	1,590	1,950
Total Imported Water		123,651	118,773

¹ The Values of imported water for the City of Long Beach are the same in the Central Basin.

² Excludes acre-feet of imported water that was exported to Palos Verdes.

Table 18 – Recycled Water Use

Source of Water	Party/Entity	Quantity (acre-feet) ¹	
		2022- 2023	2023-2024
West Basin Municipal Water District:	California Water Service Company	192	186
	California Water Service Company (Hawthorne Lease)	75	65
	California Water Service Company (Dominguez)	5,692	5,088
	El Segundo, City of	9,106	9,211
	Golden State Water Company	317	281
	Inglewood, City of	502	537
	Los Angeles, City of	1,049	767
	Manhattan Beach, City of	273	321
	Torrance, City of	5,053	5,056
Total Recycled Water		22,259	21,512

Table 19 – Seawater Intrusion Barrier Project Operations

Provisional data provided by the Los Angeles County Department of Public Works.

Source of Water	Quantity (acre-feet)	
	2022- 2023	2023-2024
West Coast Basin Barrier		
Imported Water Injection	4,829	8,157
Recycled Water Injection	7,274	6,161
Dominguez Gap Barrier		
Imported Water Injection	2,338	2,000
Recycled Water Injection	4,262	4,711
Total	18,703	21,029

¹ Excludes recycled water used for groundwater recharge.

Table 20 - Apportionment of Budget Among Rights Holders

Party	AR (acre-feet)	Water Rights Panel	Administrative Body	Total Amount Billed
A B C Nursery Inc.	24.10	\$0.00	\$71.61	\$71.61
Honeywell International Inc.	22.50	\$0.00	\$68.19	\$68.19
Asahi Fancy Koi Inc.	2.00	\$0.00	\$24.28	\$24.28
Automation Industries Inc.	0.70	\$0.00	\$21.50	\$21.50
CBS Inc.	9.50	\$0.00	\$40.34	\$40.34
California Water Service Company - Hermosa / Redondo	4,070.00	\$0.00	\$8,736.17	\$8,736.17
California Water Service Company - Dominguez	10,417.45	\$0.00	\$22,329.65	\$22,329.65
Carson Harbor Village Mobile Home Park	7.00	\$0.00	\$34.99	\$34.99
Carson-Madrona Company #3 Del Amo	104.00	\$0.00	\$242.72	\$242.72
Century Builders	4.70	\$0.00	\$30.07	\$30.07
Chandler Palos Verdes Sand & Gravel Company	4.20	\$0.00	\$28.99	\$28.99
Chevron U.S.A. Inc.	4,601.30	\$0.00	\$9,873.99	\$9,873.99
Coastline Church of Christ	0.70	\$0.00	\$21.50	\$21.50
Phillips 66 Company	6,170.00	\$0.00	\$13,233.46	\$13,233.46
Curtis, Owen	0.36	\$0.00	\$20.77	\$20.77
Estate of Golda Delaney	4.10	\$0.00	\$28.78	\$28.78
El Segundo, City of	953.00	\$0.00	\$2,060.91	\$2,060.91
Susan Engelsma Trust	12.10	\$0.00	\$45.91	\$45.91
Evergreen America Corporation	5.40	\$0.00	\$31.56	\$31.56
Fujimoto, S R & S T & J K	20.00	\$0.00	\$62.83	\$62.83
Gillingham, Florence R, et al	2.40	\$0.00	\$25.14	\$25.14
Golden State Water Company	7,502.24	\$0.00	\$16,086.54	\$16,086.54
Hawthorne, City of (California Water Service Co.)	1,882.00	\$0.00	\$4,050.43	\$4,050.43
Hillside Memorial Park	104.10	\$0.00	\$242.94	\$242.94
Hollywood Park Land Company, LLC	282.00	\$0.00	\$623.92	\$623.92
Honold, Kristin Brandsma	11.80	\$0.00	\$45.27	\$45.27
Inglewood, City of	4,449.89	\$0.00	\$9,549.73	\$9,549.73
Kinder Morgan Liquids Terminals, LLC	167.00	\$0.00	\$377.64	\$377.64
Estate of Emma L. Leuzinger	1.40	\$0.00	\$23.00	\$23.00
Lockheed Martin Corporation	0.10	\$0.00	\$20.21	\$20.21
Long Beach, City of	0.70	\$0.00	\$21.50	\$21.50
Frank Lopes	3.70	\$0.00	\$27.92	\$27.92
Los Angeles Department of Water and Power, City of	1,503.00	\$0.00	\$3,238.77	\$3,238.77
Los Angeles County Recreation Facilities	363.70	\$0.00	\$798.89	\$798.89
Los Angeles County Sanitation District No. 2	102.00	\$0.00	\$238.44	\$238.44
Lomita Water System, City of	1,352.00	\$0.00	\$2,915.40	\$2,915.40
Loyola Marymount University	48.10	\$0.00	\$123.01	\$123.01
Manhattan Beach, City of	1,131.20	\$0.00	\$2,442.54	\$2,442.54
McDonnell Douglas Corporation	1.70	\$0.00	\$23.64	\$23.64
Torrance Refining Company LLC	2,596.40	\$0.00	\$5,580.36	\$5,580.36
Montrose Chemical Corporation of California	1.20	\$0.00	\$22.57	\$22.57
Roy H. and Kenji Mori	3.60	\$0.00	\$27.71	\$27.71
Northrop Corporation	38.15	\$0.00	\$101.70	\$101.70
Nozaki, Sumikichi	7.00	\$0.00	\$34.99	\$34.99
Pacific Crest Cemetery Company	0.00	\$0.00	\$20.00	\$20.00
Josephine P. Rehor	2.20	\$0.00	\$24.71	\$24.71

Party	AR (acre-feet)	Water Rights Panel	Administrative Body	Total Amount Billed
Eco Services Operations LLC	521.00	\$0.00	\$1,135.76	\$1,135.76
Rolling Hills Country Club	290.00	\$0.00	\$641.05	\$641.05
Roman Catholic Archbishop of Los Angeles	72.30	\$0.00	\$174.84	\$174.84
SCI California Funeral Services Inc	39.40	\$0.00	\$104.38	\$104.38
Shell Oil Company	1,019.50	\$0.00	\$2,203.33	\$2,203.33
Southern California Edison Company	57.10	\$0.00	\$142.28	\$142.28
Tesoro Refining & Marketing Company LLC	8,741.00	\$0.00	\$18,739.43	\$18,739.43
Torrance, City of	5,638.86	\$0.00	\$12,095.99	\$12,095.99
Vukelich, Mike, Jr.	10.00	\$0.00	\$41.42	\$41.42
Watson Land Company	80.20	\$0.00	\$191.75	\$191.75
Total	64,468.25	\$0.00	\$139,203	\$139,203

Figure 1 - West Coast Basin
(showing groundwater production)

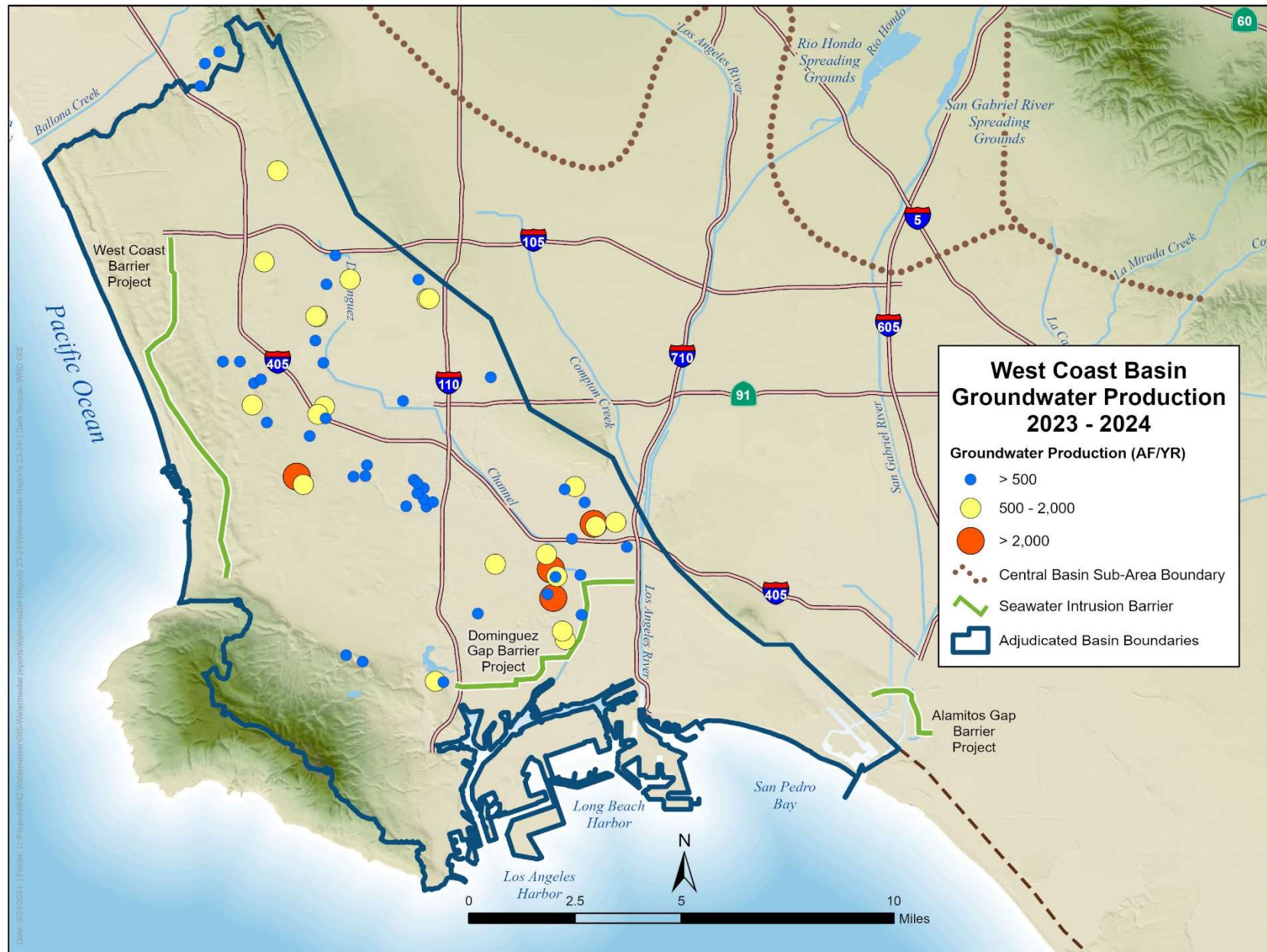


Figure 2 - Monthly Water Production
(excludes non-consumptive use)

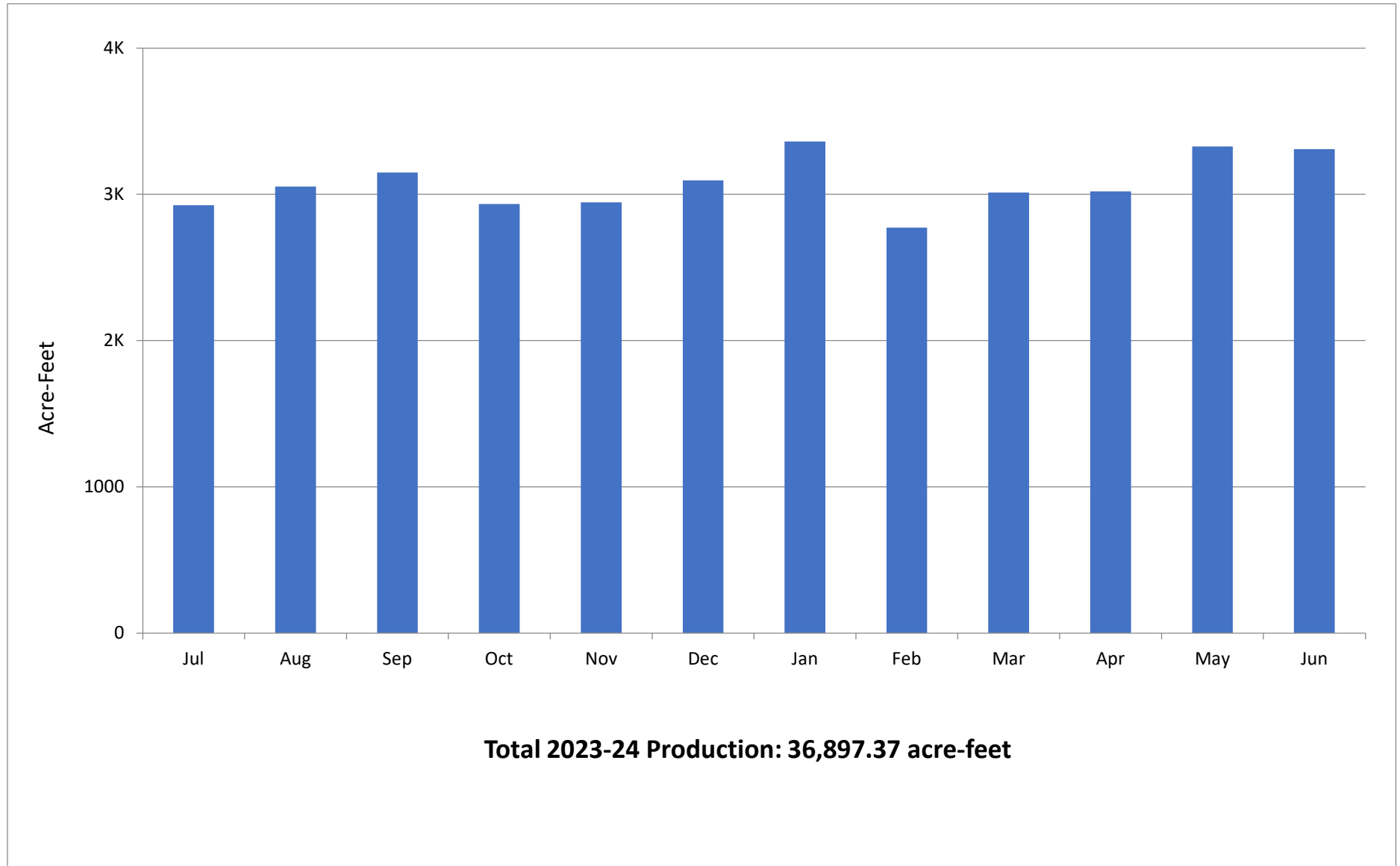


Figure 3 - West Coast Basin
(showing key wells and facilities)



Figure 4 - Monthly Average Precipitation

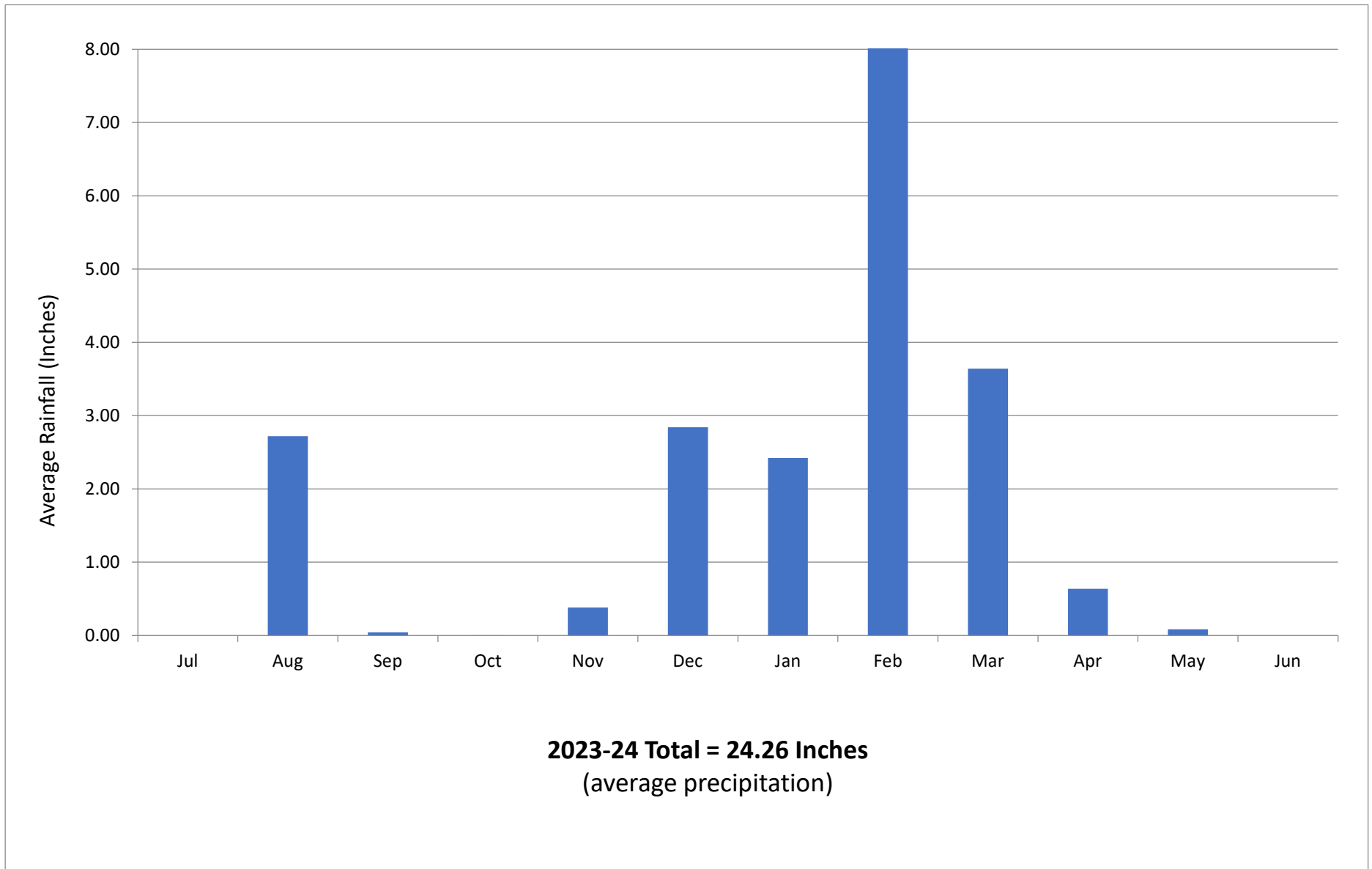


Figure 5 - Total Water Use
(Excludes Groundwater Recharge)

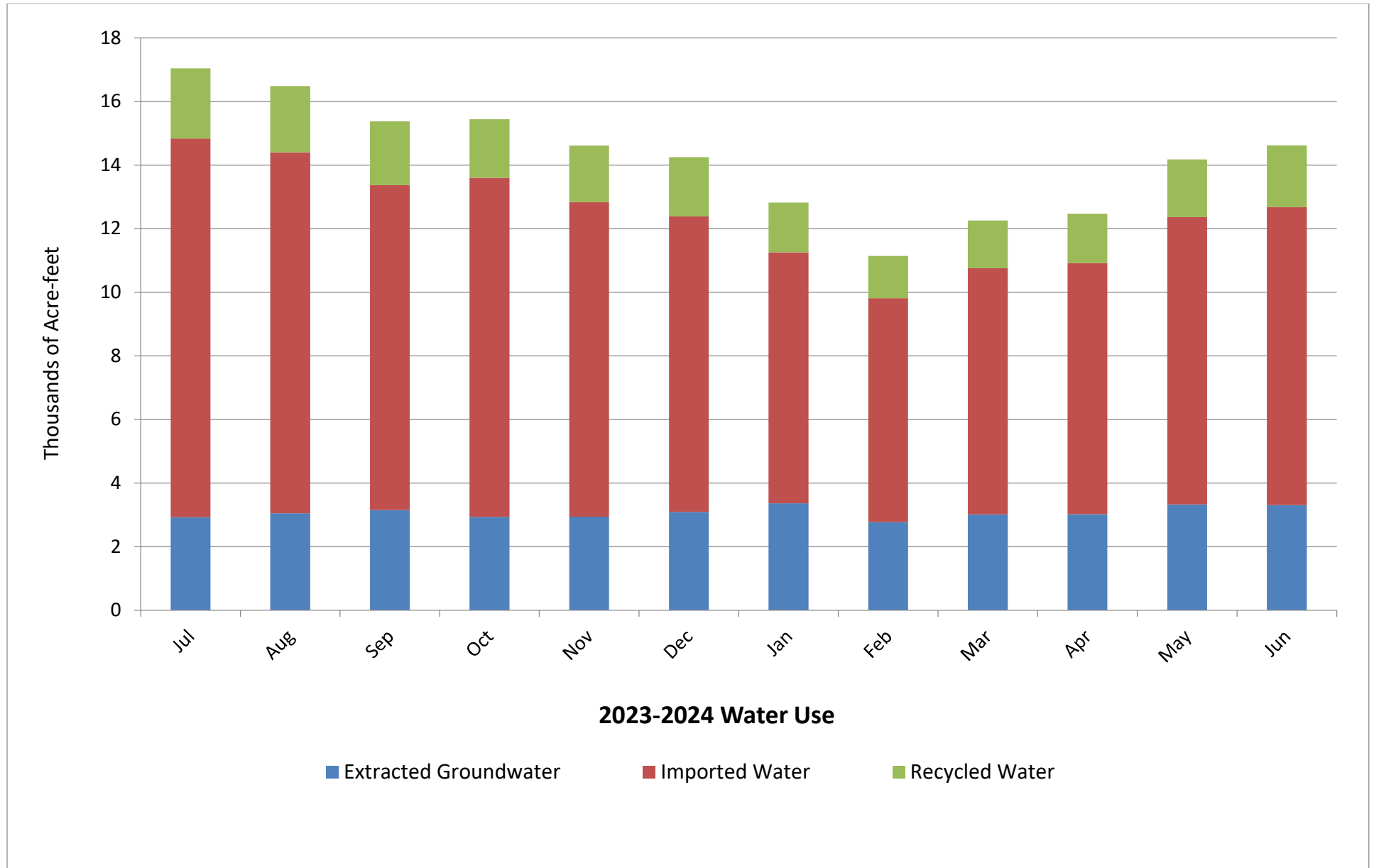
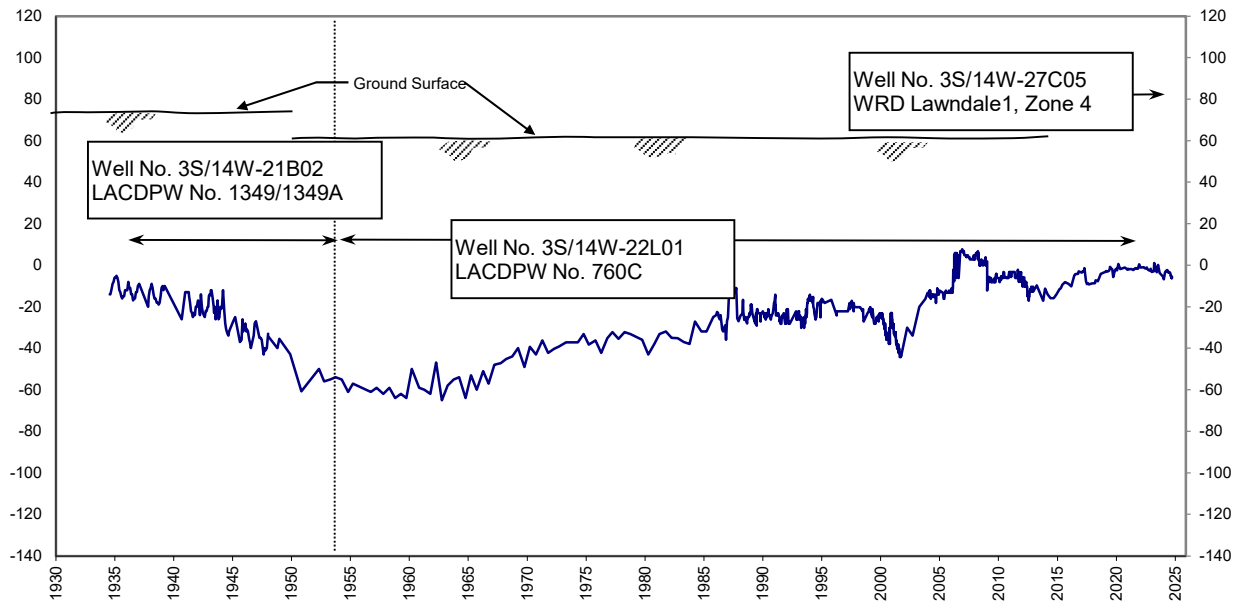
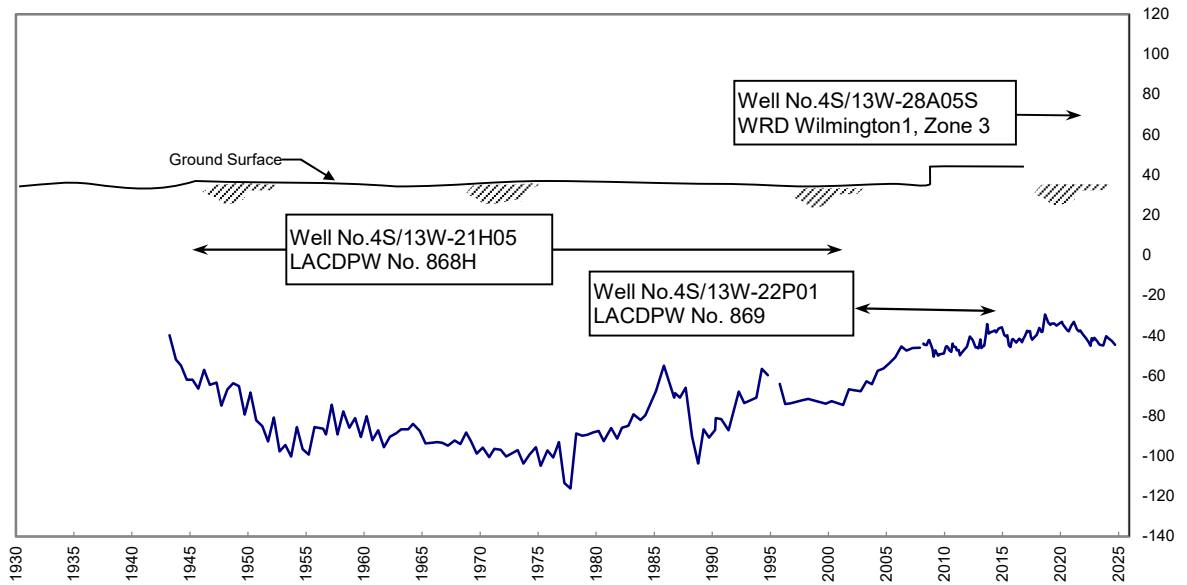


Figure 6 - Water Level Hydrographs

Lawndale1 Key Well



Wilmington1 Key Well



See Figure 3 for well locations.

X-Axis: Year

Y-Axis: Groundwater Elevation (feet mean sea level)

Appendix A

Groundwater Extractions

July 2023- June 2024

Appendix A - Groundwater Extractions (acre-feet)

7002 - ABC Nursery, Inc.	JUL	AUG	SEPT	OCT	NOV	DEC	JAN	FEB	MAR	APR	MAY	JUN	TOTAL
SWN/Owner No.	1.00	1.00	1.00	1.00	1.00	1.00	1.00	1.00	1.00	1.00	1.00	1.00	12.00
003S013W29F011S/1	1.00	1.00	1.00	1.00	1.00	1.00	1.00	1.00	1.00	1.00	1.00	1.00	12.00

7052 - California Water Service Co./Hawthorne Lease	JUL	AUG	SEPT	OCT	NOV	DEC	JAN	FEB	MAR	APR	MAY	JUN	TOTAL
SWN/Owner No.	87.25	82.60	78.77	0.42	3.38	67.26	77.25	75.20	60.86	44.08	22.25	0.44	599.76
3S/14W-09M01S/13	87.25	82.60	78.77	0.42	3.38	67.26	77.25	75.20	60.86	44.08	22.25	0.44	599.76

7050 - California Water Service Company	JUL	AUG	SEPT	OCT	NOV	DEC	JAN	FEB	MAR	APR	MAY	JUN	TOTAL
SWN/Owner No.	89.02	89.79	83.54	87.98	81.38	87.06	85.13	78.52	75.61	90.46	85.13	87.24	1,020.86
003S014W29H001S/30-01	0.29	0.00	0.00	0.33	0.00	0.00	0.68	0.03	0.25	4.54	0.00	5.64	11.76
003S014W29J001S/22-01	1.23	2.19	1.29	0.85	0.48	0.86	1.19	0.91	0.83	1.30	0.93	1.36	13.42
003S014W32A002S/08-02	87.50	87.60	82.25	86.80	80.90	86.20	83.26	77.58	74.53	84.62	84.20	80.24	995.68

7053 - California Water Service Company (Dominguez)	JUL	AUG	SEPT	OCT	NOV	DEC	JAN	FEB	MAR	APR	MAY	JUN	TOTAL
SWN/Owner No.	511.63	501.44	539.01	487.30	699.15	582.23	598.18	559.29	532.61	493.34	503.96	486.71	6,494.85
004S013W11P002S/294-01	102.89	98.35	97.58	19.31	121.19	127.68	131.60	122.65	128.44	125.90	130.77	115.12	1,321.48
004S013W15A011S/215-01	109.88	105.55	104.74	108.92	112.23	102.07	106.79	101.82	107.53	105.02	106.86	106.77	1,278.18
004S013W15A014S/298-01	186.10	183.00	182.58	186.10	195.68	178.66	188.90	178.52	183.57	185.53	186.46	190.44	2,225.54
004S013W15F001S/277-01	31.25	29.19	31.30	14.52	0.00	0.00	0.00	0.00	0.00	0.00	0.00	1.46	107.72
004S013W20C001S/279-01	81.51	83.75	83.75	80.47	183.88	87.65	80.47	91.87	82.88	76.89	79.87	72.92	1,085.91
004S013W29E006S/275-01	0.00	1.60	39.06	77.98	86.17	86.17	90.42	64.43	30.19	0.00	0.00	0.00	476.02

7623 - Eco Services Operations, LLC	JUL	AUG	SEPT	OCT	NOV	DEC	JAN	FEB	MAR	APR	MAY	JUN	TOTAL
SWN/Owner No.	14.66	21.38	47.10	76.40	63.30	71.80	70.50	5.67	73.40	71.70	73.80	80.50	670.21
004S013W10C004S/2	14.66	21.38	47.10	76.40	63.30	71.80	70.50	5.67	73.40	71.70	73.80	80.50	670.21

Appendix A - Groundwater Extractions (Continued)

7226 - Golden State Water Company	JUL	AUG	SEPT	OCT	NOV	DEC	JAN	FEB	MAR	APR	MAY	JUN	TOTAL
SWN/Owner No.	525.76	759.22	852.10	788.86	781.41	789.30	761.52	672.92	759.57	798.64	879.54	862.48	9,231.32
003S014W13B003S/BA004	3.88	0.08	0.00	0.44	0.00	0.00	0.96	0.31	2.64	0.22	0.00	0.29	8.82
003S014W13J009S/S0005	54.57	104.69	132.22	139.09	103.72	74.81	58.13	97.47	141.58	132.58	136.52	128.41	1,303.79
003S014W13J010S/S0006	9.29	69.33	87.34	2.47	66.77	89.99	32.25	0.00	34.58	118.25	151.44	143.05	804.76
003S014W14D002S/129-02	51.03	106.10	134.13	144.33	140.56	143.38	144.02	132.07	138.37	129.02	132.89	125.33	1,521.23
003S014W15B003S/Goldmedal #1	4.56	0.90	0.00	0.08	0.07	0.00	0.08	0.00	0.24	0.00	0.00	0.65	6.58
003S014W15P001S/Doty1	28.51	62.89	80.96	84.16	80.11	83.12	82.75	76.24	83.23	81.97	82.75	81.57	908.26
003S014W15P002S/Doty2	44.86	97.59	128.96	132.19	126.72	133.48	134.26	55.40	0.00	0.00	0.00	0.00	853.46
003S014W22L001S/CD001	0.01	0.47	0.00	0.34	0.09	0.00	0.00	0.62	0.03	0.00	0.00	0.00	1.56
003S014W25P004S/DA001	3.38	0.63	0.00	0.00	0.00	0.00	29.02	61.32	96.72	91.77	95.59	91.68	470.11
3S/14W-13B04S/BA005	5.07	0.23	0.00	0.45	0.00	0.00	1.15	0.41	2.35	0.19	0.00	0.56	10.41
3S/14W-25P06S/DA002	320.60	316.31	288.49	285.31	263.37	264.52	278.90	249.08	259.83	244.64	280.35	290.94	3,342.34

7270 - Hillside Memorial Park	JUL	AUG	SEPT	OCT	NOV	DEC	JAN	FEB	MAR	APR	MAY	JUN	TOTAL
SWN/Owner No.	9.03	15.07	12.97	9.49	8.37	4.75	1.35	0.88	5.88	7.66	13.12	13.76	102.33
002S014W19K004S/3	9.03	15.07	12.97	9.49	8.37	4.75	1.35	0.88	5.88	7.66	13.12	13.76	102.33

7310 - Inglewood, City of	JUL	AUG	SEPT	OCT	NOV	DEC	JAN	FEB	MAR	APR	MAY	JUN	TOTAL
SWN/Owner No.	160.63	159.76	149.22	131.12	147.39	148.51	140.31	134.40	137.85	129.92	113.42	117.28	1,669.81
002S014W33F001S/Well No.7	131.42	130.98	125.09	124.34	119.06	120.03	115.57	111.22	114.50	108.46	113.42	117.28	1,431.37
003S014W10G004S/2	29.21	28.78	24.13	6.78	28.33	28.48	24.74	23.18	23.35	21.46	0.00	0.00	238.44

7364 - Kinder Morgan Liquids Terminals LLC	JUL	AUG	SEPT	OCT	NOV	DEC	JAN	FEB	MAR	APR	MAY	JUN	TOTAL
SWN/Owner No.	3.91	3.92	3.19	3.52	2.92	2.97	3.91	0.88	0.40	3.86	3.66	3.57	36.71
2S/14W23H17S/1391E	3.91	3.92	3.19	3.52	2.92	2.97	3.91	0.88	0.40	3.86	3.66	3.57	36.71

Appendix A - Groundwater Extractions (Continued)

7390 - Long Beach, City of	JUL	AUG	SEPT	OCT	NOV	DEC	JAN	FEB	MAR	APR	MAY	JUN	TOTAL
SWN/Owner No.	0.00	0.00	0.41	0.00	0.00	21.79	0.00	0.00	8.96	0.00	0.00	25.13	56.29
004S013W14K011S/1	0.00	0.00	0.41	0.00	0.00	21.79	0.00	0.00	8.96	0.00	0.00	25.13	56.29

7435 - Los Angeles County Department of Parks & Recreation	JUL	AUG	SEPT	OCT	NOV	DEC	JAN	FEB	MAR	APR	MAY	JUN	TOTAL
SWN/Owner No.	0.00	0.00	18.41	27.61	26.20	13.82	10.72	0.00	12.26	41.98	7.21	33.15	191.36
003S014W27C001S/00761	0.00	0.00	18.41	27.61	26.20	13.82	10.72	0.00	12.26	41.98	7.21	33.15	191.36

7490 - Manhattan Beach, City of	JUL	AUG	SEPT	OCT	NOV	DEC	JAN	FEB	MAR	APR	MAY	JUN	TOTAL
SWN/Owner No.	43.80	2.33	0.00	7.03	25.85	22.46	2.97	1.30	1.45	1.45	17.18	13.71	139.53
003S014W29C003S/15	0.00	0.00	0.00	7.03	25.85	22.41	2.56	0.00	0.00	0.00	9.12	6.09	73.06
003S014W29D005S/11-A	43.80	2.33	0.00	0.00	0.00	0.05	0.41	1.30	1.45	1.45	8.06	7.62	66.47

7514 - Montrose Chemical Corp. (NCWUP)	JUL	AUG	SEPT	OCT	NOV	DEC	JAN	FEB	MAR	APR	MAY	JUN	TOTAL
SWN/Owner No.	0.00	0.00	-0.08	0.00	0.00	-0.74	0.00	0.00	-1.31	0.00	0.00	-0.65	-2.78
G-EW-4	0.00	0.00	1.54	0.00	0.00	8.63	0.00	0.00	8.94	0.00	0.00	8.61	27.72
004S014W01P002S/UBAEW1	0.00	0.00	0.46	0.00	0.00	1.72	0.00	0.00	1.97	0.00	0.00	1.13	5.28
004S014W01P003S/BF-EW-5	0.00	0.00	0.30	0.00	0.00	1.15	0.00	0.00	1.21	0.00	0.00	1.11	3.77
004S014W12B002S/UBAEW3	0.00	0.00	0.30	0.00	0.00	1.11	0.00	0.00	1.31	0.00	0.00	1.37	4.09
004S014W12B005S/BF-EW-1	0.00	0.00	0.79	0.00	0.00	2.99	0.00	0.00	3.41	0.00	0.00	3.57	10.76
004S014W12B006S/G-EW-1	0.00	0.00	3.66	0.00	0.00	16.92	0.00	0.00	20.97	0.00	0.00	22.28	63.83
004S014W12G001S/BF-EW-3	0.00	0.00	0.58	0.00	0.00	3.94	0.00	0.00	5.24	0.00	0.00	5.49	15.25
004S014W12J001S/BF-EW-2	0.00	0.00	1.37	0.00	0.00	5.18	0.00	0.00	6.55	0.00	0.00	7.48	20.58
004S014W12J002S/BF-EW-4	0.00	0.00	0.47	0.00	0.00	9.53	0.00	0.00	13.11	0.00	0.00	14.35	37.46
004S014W12J003S/G-EW-2	0.00	0.00	1.63	0.00	0.00	4.25	0.00	0.00	4.85	0.00	0.00	5.08	15.81
004S014W12L001S/G-EW-3	0.00	0.00	1.15	0.00	0.00	1.72	0.00	0.00	1.97	0.00	0.00	2.06	6.90
4S/14W-01N02S/G-IW-1	0.00	0.00	-4.18	0.00	0.00	-19.33	0.00	0.00	-19.86	0.00	0.00	-28.91	-72.28
4S/14W-01N03S/G-IW-3	0.00	0.00	-4.16	0.00	0.00	-20.10	0.00	0.00	-29.68	0.00	0.00	-28.27	-82.21

Appendix A - Groundwater Extractions (Continued)

7514 - Montrose Chemical Corp. (NCWUP)	JUL	AUG	SEPT	OCT	NOV	DEC	JAN	FEB	MAR	APR	MAY	JUN	TOTAL
SWN/Owner No.	0.00	0.00	-0.08	0.00	0.00	-0.74	0.00	0.00	-1.31	0.00	0.00	-0.65	-2.78
4S/14W-01N04S/G-IW-7	0.00	0.00	-3.99	0.00	0.00	-18.45	0.00	0.00	-21.30	0.00	0.00	-16.00	-59.74

7093 - Phillips 66 Company	JUL	AUG	SEPT	OCT	NOV	DEC	JAN	FEB	MAR	APR	MAY	JUN	TOTAL
SWN/Owner No.	416.53	416.65	404.20	372.90	374.83	371.27	362.68	331.96	351.71	351.21	376.54	321.29	4,451.77
004S013W21J003S/5	38.11	36.09	30.78	28.87	30.33	30.79	17.23	3.44	28.87	27.65	28.97	29.75	330.88
004S013W21R011S/CBP Well 6	226.51	242.80	254.70	274.16	283.81	280.90	287.44	278.34	286.76	276.16	288.63	280.58	3260.79
004S013W31N004S/LA006	37.41	16.92	59.36	63.00	60.69	59.58	58.01	50.18	36.08	47.40	58.94	10.96	558.53
004S013W31P003S/7	114.50	120.84	59.36	6.87	0.00	0.00	0.00	0.00	0.00	0.00	0.00	0.00	301.57

7655 - Rolling Hills Country Club	JUL	AUG	SEPT	OCT	NOV	DEC	JAN	FEB	MAR	APR	MAY	JUN	TOTAL
SWN/Owner No.	32.00	22.00	38.00	27.00	14.00	3.00	1.00	0.00	13.00	33.00	45.00	47.00	275.00
004S014W34H002S/Lake Well 2	32.00	22.00	38.00	27.00	14.00	3.00	0.00	0.00	13.00	33.00	45.00	47.00	274.00
004S014W35F002S/PLANT	0.00	0.00	0.00	0.00	0.00	0.00	1.00	0.00	0.00	0.00	0.00	0.00	1.00

7659 - Roman Catholic Archbishop of Los Angeles	JUL	AUG	SEPT	OCT	NOV	DEC	JAN	FEB	MAR	APR	MAY	JUN	TOTAL
SWN/Owner No.	30.74	31.97	4.35	0.01	0.01	0.01	0.00	0.00	0.00	3.38	17.79	15.43	103.69
002S014W18J001S/AA	30.74	31.97	4.35	0.01	0.01	0.01	0.00	0.00	0.00	0.00	0.00	0.00	67.09
002S014W18Q002S/HOLY1	0.00	0.00	0.00	0.00	0.00	0.00	0.00	0.00	0.00	3.38	17.79	15.43	36.60

Appendix A - Groundwater Extractions (Continued)

7680 - SCI Funeral Services	JUL	AUG	SEPT	OCT	NOV	DEC	JAN	FEB	MAR	APR	MAY	JUN	TOTAL
SWN/Owner No.	3.43	6.35	4.84	3.93	0.23	0.10	0.95	0.41	1.57	1.97	3.20	3.79	30.77
003S014W33E001S/7Z 83	3.43	6.35	4.84	3.93	0.23	0.10	0.95	0.41	1.57	1.97	3.20	3.79	30.77

7701 - Shell Oil Co (NCWUP)	JUL	AUG	SEPT	OCT	NOV	DEC	JAN	FEB	MAR	APR	MAY	JUN	TOTAL
SWN/Owner No.	9.18	7.77	2.33	0.00	0.00	5.31	0.00	0.00	20.32	0.00	0.00	26.28	71.19
004S013W10E007S/DD-3	4.05	3.16	1.21	0.00	0.00	5.23	0.00	0.00	8.48	0.00	0.00	9.77	31.90
004S013W10K002S/DOM-GSP-R2M	5.13	4.61	1.12	0.00	0.00	0.08	0.00	0.00	11.84	0.00	0.00	16.51	39.29

7720 - Southern California Edison Co.	JUL	AUG	SEPT	OCT	NOV	DEC	JAN	FEB	MAR	APR	MAY	JUN	TOTAL
SWN/Owner No.	3.81	1.79	3.14	1.65	1.60	1.74	0.97	0.38	0.40	0.00	1.03	3.09	19.60
003S014W34N004S/SCECO	3.81	1.79	3.14	1.65	1.60	1.74	0.97	0.38	0.40	0.00	1.03	3.09	19.60

7807 - Tesoro Refining & Marketing Co., LLC	JUL	AUG	SEPT	OCT	NOV	DEC	JAN	FEB	MAR	APR	MAY	JUN	TOTAL
SWN/Owner No.	890.38	838.41	800.72	724.14	492.78	520.81	838.85	691.96	736.24	722.88	817.89	742.11	8,817.17
W-REMED	0.28	0.00	0.92	1.54	1.43	0.29	1.23	0.63	0.15	0.10	0.24	0.09	6.90
004S013W16J006S/WW-14	34.86	31.95	10.29	0.00	0.00	0.00	0.00	65.60	126.86	126.87	140.53	125.76	662.72
004S013W16R003S/Well 17	362.33	351.48	330.09	300.82	88.78	57.81	344.67	321.12	333.29	332.23	364.65	360.73	3,548.00
004S013W21H008S/Well 16	189.47	161.36	198.55	206.78	171.48	175.35	174.99	142.91	125.32	124.86	20.04	0.00	1,691.11
004S013W22F007S/SRP12	8.66	8.94	9.00	8.10	7.91	7.87	7.55	6.06	5.89	6.15	6.80	6.91	89.84
004S013W27M006S/15	144.29	136.34	113.32	69.89	84.00	134.04	136.35	26.70	0.00	0.00	129.18	148.41	1,122.52
004S013W27N006S/SHE12	145.29	139.63	131.95	130.16	131.57	140.21	168.81	122.58	139.27	129.84	150.73	92.97	1,623.01
009S099W99P099S/C-REMED	5.20	8.71	6.60	6.85	7.61	5.24	5.25	6.36	5.46	2.83	5.72	7.24	73.07

Appendix A - Groundwater Extractions (Continued)

7510 - Torrance Refining Company LLC	JUL	AUG	SEPT	OCT	NOV	DEC	JAN	FEB	MAR	APR	MAY	JUN	TOTAL
SWN/Owner No.	101.00	98.34	96.74	106.10	102.09	91.23	99.79	66.77	80.37	59.57	49.03	91.83	1,042.86
004S014W02F001S/EW-5	31.59	35.05	35.09	36.36	35.42	35.99	34.06	29.50	35.07	22.66	19.48	35.42	385.69
004S014W02L002S/EW-3	19.29	17.65	21.04	22.84	17.80	13.35	18.26	5.12	2.66	6.19	10.49	0.00	154.69
004S014W02M004S/EW-1	31.00	27.24	18.02	22.05	29.32	28.04	30.31	22.32	27.14	20.68	19.06	28.16	303.34
004S014W02P001S/EW-02R	19.12	18.40	22.59	24.85	19.55	13.85	17.16	9.83	15.50	10.04	0.00	28.25	199.14

7850 - Torrance, City of	JUL	AUG	SEPT	OCT	NOV	DEC	JAN	FEB	MAR	APR	MAY	JUN	TOTAL
SWN/Owner No.	0.00	0.00	12.00	76.85	118.70	293.66	303.89	149.60	158.06	163.75	295.97	359.00	1,931.48
003S014W34C003S/9	0.00	0.00	9.56	76.83	57.42	0.00	37.37	148.78	153.97	162.59	112.28	118.44	877.24
003S014W34F005S/Well 10	0.00	0.00	2.44	0.02	61.28	183.15	165.70	0.55	2.26	0.72	183.39	240.10	839.61
003S014W34F006S/Well 11	0.00	0.00	0.00	0.00	0.00	110.51	100.82	0.27	1.83	0.44	0.30	0.46	214.63

7917- Water Replenishment District (Extraction Exemption)	JUL	AUG	SEPT	OCT	NOV	DEC	JAN	FEB	MAR	APR	MAY	JUN	TOTAL
SWN/Owner No.	437.36	398.45	444.78	452.41	421.26	394.26	337.95	346.88	337.71	233.28	228.16	203.93	4,236.43
004S014W04R001S/Delthorne Park	293.16	281.17	285.22	291.37	285.85	264.48	238.70	246.44	243.48	202.76	35.77	0.00	2,668.40
004S014W04R002S/City Yard	144.20	117.28	159.56	161.04	135.41	129.78	99.25	100.44	94.23	30.52	192.39	203.93	1,568.03

Appendix B

Successions of Adjudicated Rights
as of
June 2024

Appendix B – Succession of Adjudicated Rights June 2024 (acre-feet)

ABC NURSERY, INC			(NOW KNOWN AS BARCLAY HOLLANDER CORP)		
SUCCESSOR TO JENKINS, HARRY C	1.80		BARCLAY, RICHARD AND R A WATT		
SUCCESSOR TO TITLE, SIDNEY R AND CHARLOTTE W	13.60		SUCCESSORS TO EMMA J OSBORN	32.66	
SUCCESSOR TO VERBURG, WILLIAM AND CLARA B	6.70		SUCCESSORS IN PART TO ISABELA J GRANZ ESTATE	13.55	
SUCCESSOR IN PART TO UNITED CALIFORNIA BANK	2.00		SUCCESSORS IN PART TO GEORGE R MURDOCK SOLD TO CITY OF TORRANCE	13.75	
TOTAL		24.10	TOTAL	-59.96	0.00
ABELL, FRANK	1.80		BAUMAN, GUS A	0.00	
SOLD TO CITY OF INGLEWOOD	-1.80		TRANSFERRED TO PALOS VERDES BEGONIA FARM		
TOTAL		0.00	TOTAL		0.00
ALCAST FOUNDRY, ET AL	7.20		BEGO CORPORATION	4.10	
SOLD TO CITY OF TORRANCE	-7.20		SOLD TO ESTATE OF GOLDA DELANEY	-4.10	
TOTAL		0.00	TOTAL		0.00
ALLIED CHEMICAL CORP (SEE INDUSTRIAL CHEMICAL DIVISION, ALLIED CHEMICAL CORP)			BELVIDERE MUTUAL WATER CO	33.40	
ALLIED CORP (FORMERLY: ALLIED CHEMICAL CORP) (NOW KNOWN AS ALLIED-SIGNAL, INC [EL SEGUNDO OFFICE])			SOLD TO CITY OF TORRANCE	-33.40	
ALLIED-SIGNAL, INC (TORRANCE OFFICE)			TOTAL		0.00
SUCCESSOR TO GARRETT CORP, THE (MERGED WITH HONEYWELL INTERNATIONAL, INC AND NAME CHANGED TO HONEYWELL INTERNATIONAL, INC)	22.50		BLACK, DANA		
TOTAL	-22.50		SUCCESSOR IN PART TO ESTATE OF JOHN GRANT	11.80	
ALLIED-SIGNAL, INC (EL SEGUNDO OFFICE) (FORMERLY: ALLIED CORP)	255.00		SOLD TO ECOGAS, INC.	-11.80	
(MERGED WITH HONEYWELL INTERNATIONAL, INC AND NAME CHANGED TO HONEYWELL INTERNATIONAL, INC)	-255.00		TOTAL		0.00
TOTAL		0.00	BOISE CASCADE BUILDING CO		
ALWAG, HILARIO S AND EMMA			SUCCESSOR IN PART TO JOUGHIN TORRANCE RANCH	16.92	
SUCCESSOR TO T C NAVARRO	53.90		SOLD TO INGLEWOOD, CITY OF	-16.92	
SUCCESSOR TO PEGGY SWICK	5.50		TOTAL		0.00
SOLD TO TORRANCE UNIFIED SCHOOL DISTRICT	-59.40		BOARD OF RETIREMENT-LOS ANGELES CO EMPL RET SYS		
TOTAL		0.00	SECOND WEST COAST BASIN JUDGMENT (NOW KNOWN AS LOS ANGELES COUNTY WESTERN AVE GOLF)		
AMERICAN PLANT GROWERS, INC			BOEING COMPANY		
SECOND WEST COAST BASIN JUDGMENT	2.60		LEGAL SUCCESSOR BY VIRTUE OF A MERGER FROM MCDONNELL DOUGLAS CORPORATION (MERGER BOEING & MCDONNELL)	1.70	
SUCCESSOR TO BEN CLUFF DAIRY	7.40		TOTAL		1.70
SOLD TO SUNRISE GROWERS, INC	-10.00		BRANDSMA, MAYNARD		
SUCCESSOR TO SUNRISE GROWERS, INC	10.00		SUCCESSOR IN PART TO ESTATE OF JOHN GRANT	11.80	
SOLD TO VUKELICH MIKE, JR.	-10.00		SOLD TO HILLSIDE MEMORIAL PARK	-11.80	
TOTAL		0.00	TOTAL		0.00
ANDERSON, REMBERT C	80.50		BURKE, W F AND LOIS PRICE	9.50	
SOLD TO SPARKLETT'S DRINKING WATER CORP	-80.50		SOLD TO H S SCOTT	-9.50	
TOTAL		0.00	TOTAL		0.00
AQUA CAPITAL MANAGEMENT LP			CBS INC		
SUCCESSOR TO ECOGAS	11.80		FORMERLY COLUMBIA BROADCASTING SYS INC	18.50	
SOLD TO HILLSIDE MEMORIAL PARK AND MORTUARY	-11.80		SOLD TO MORAN, RONALD E	-9.00	
TOTAL		0.00	TOTAL		9.50
ASAHI FANCY KOI, INC			CALIFORNIA, STATE OF		
SUCCESSOR IN PART TO JAKE ENGELSMA	2.00		SUCCESSOR TO ROBERT L FULLILOVE	1.00	
TOTAL		2.00	SUCCESSOR TO JOE MONIZ JR	2.20	
ASSOCIATED SOUTHERN INVESTMENT CO (FORMERLY EDISON SECURITIES CO)	46.70		SUCCESSOR IN PART TO KELLY PIPE CO	16.30	
SOLD TO SOUTHERN CALIFORNIA EDISON CO	-46.70		SUCCESSOR IN PART TO FLAVIO RODRIGUEZ	4.00	
TOTAL		0.00	SUCCESSOR IN PART TO A H SMITH (SAM SURBER AND FRED A SMITH)	2.60	
ATLANTIC RICHFIELD CO (FORMERLY RICHFIELD OIL CO)	4,428.00		SOLD TO SPARKLETT'S DRINKING WATER CORP	-26.10	
SUCCESSOR TO MANVILLE SALES CORP	881.00		TOTAL		0.00
SOLD TO TESORO REFINING AND MARKETING COMPANY LLC (6-13-2013)	-5,309.00		CALIFORNIA WATER SERVICE CO	3,071.00	
TOTAL		0.00	SUCCESSOR TO PALOS VERDES WATER CO	999.00	
AUTOMATION INDUSTRIES			TOTAL		4,070.00
SUCCESSOR TO HARRIS TUBE, INC	0.70		CALIFORNIA WATER SERVICE CO (DOMINGUEZ)		
TOTAL		0.70	DOMINGUEZ WATER CO MERGED WITH AND INTO CALIFORNIA WATER SERVICE CO, WATERMASTER ACCOUNT KNOWN AS CALIFORNIA WATER SERVICE CO (DOMINGUEZ)	255.00	
BALLMAN, ROSEMARY N	7.00		SUCCESSOR IN PART TO HONEYWELL INTERNATIONAL INC		
SOLD TO UNITED CALIFORNIA BANK	-7.00		TOTAL		10,417.45
TOTAL		0.00	CARSON ESTATE CO	130.00	
BANK OF AMERICA NATIONAL TRUST AND SAVINGS ASSOCIATION (TRUST BI-51) RELEASED TO MICHAEL L ROCKWELL	0.10		SOLD TO DOMINGUEZ WATER CORP	-130.00	
TOTAL	-0.10		TOTAL		0.00
BARCLAY HOLLANDER CORP (FORMERLY BARCLAY HOLLANDER CURCI INC)			CARSON-HARBOR VILLAGE MOBILE HOME PARK		
SUCCESSOR IN PART TO JOUGHIN TORRANCE RANCH	3.33		SUCCESSOR TO ETCHEMENDY, CAROLINE, ESTATE OF	8.20	
SOLD TO TORRANCE, CITY OF	-3.33		SOLD TO MONTROSE CHEMICAL CORPORATION OF CALIFORNIA (9-28-2011)	-1.20	
TOTAL		0.00	TOTAL		7.00
BARCLAY HOLLANDER CURCI INC			CARSON-MADRONA CO		
			SUCCESSOR TO CHANSLOR-WESTERN OIL AND DEVELOP CO	104.00	
			TOTAL		104.00
			CENTURY BUILDERS		
			SUCCESSOR TO UNION NURSERY, INC	4.70	
			TOTAL		4.70
			CHANDLERS PALOS VERDES SAND AND GRAVEL CORP		
			SECOND WEST COAST BASIN JUDGMENT	95.20	
			SUCCESSOR TO SOUTHWESTERN PORTLAND CEMENT CO	15.00	

West Coast Basin Watermaster

SUCCESSOR TO TORRANCE SAND AND GRAVEL CORP	184.00		TOTAL		0.00
SOLD TO ROLLING HILLS COUNTRY CLUB	-290.00		DON WILSON BUILDERS		
TOTAL		4.20	SUCCESSORS TO KASUO, ISAMU, AND YOSHIKI R KITA	32.60	
CHANSLOR-WESTERN OIL AND DEVELOPMENT CO (FORMERLY CHANSLOR-CANFIELD MIDWAY OIL CO)	104.00		SOLD TO DOMINGUEZ WATER CORP	-32.60	
SOLD TO CARSON-MADRONA CO	-104.00		TOTAL		0.00
TOTAL		0.00	DOUGLAS AIRCRAFT CO, INC (SEE MCDONNELL DOUGLAS CORP)		
CHEMICALS CO OF ALLIED CORP (FORMERLY INDUSTRIAL CHEMICAL DIVISION, ALLIED CHEMICAL CORP) (NOW KNOWN AS ALLIED CORP)			EARLY, H J AND DAISY	111.00	
CHEVRON USA INC	4,541.70		SOLD TO DOMINGUEZ WATER CORP	-91.00	
(FORMERLY STANDARD OIL CO OF CALIFORNIA)			SOLD TO SAMUEL R AND RAYMOND S FUJIMOTO	-20.00	
SUBJECT TO LONG TERM LEASE FROM ISABELLA GRANZ PER JUDGEMENT	59.60		TOTAL		0.00
TOTAL		4,601.30	ECOGAS, INC.		
CHRISTIE, CLEM, DON C FOHL AND LEON LARSON (TRUSTEES OF WILMINGTON CEMETERY ASSOC) ABANDONED WATER RIGHT	0.02		SUCCESSOR TO BLACK, DANA	11.80	
TOTAL	-0.02	0.00	SOLD TO AQUA CAPITAL MANAGEMENT LP	-11.80	
CHURCHILL DOWNS CALIFORNIA CO SUCCESSOR TO HOLLYWOOD PARK OPERATING CO	282.00		TOTAL		0.00
SOLD TO HOLLYWOOD PARK LAND COMPANY, LLC	-282.00		ECO SERVICES OPERATIONS LLC (FORMERLY SOLVAY USA INC.)	521.00	
TOTAL		0.00	TOTAL		521.00
CLUFF, BEN DAIRY			EDISON SECURITIES CO (NOW KNOWN AS ASSOCIATED SOUTHERN INVESTMENT CO)		
SUCCESSOR TO EDWARD AND EMILY COST	7.40		EL SEGUNDO, CITY OF	953.00	
SOLD TO AMERICAN PLANT GROWERS, INC	-7.40		TOTAL		953.00
TOTAL		0.00	ENGELSMA, JAKE		
COAST FOREST PRODUCTS			SUCCESSOR TO WILBUR HORNSTRA	14.10	
SUCCESSOR TO SOUTHWEST STEEL ROLLING MILLS	3.40		SOLD TO ASAHI FANCY KOI, INC	-2.00	
SOLD TO GEORGIA-PACIFIC CORP	-3.40		TRANSFERRED TO SUSAN ENGELSMA, TRUSTEE ET AL	-12.10	
TOTAL		0.00	TOTAL		0.00
COASTLINE CHURCH OF CHRIST SUCCESSOR TO LERMENS, EVELYN	0.70		ENGELSMA, SUSAN; TRUSTEE OF THE SUSAN ENGELSMA TRUST		
TOTAL		0.70	TRANSFERRED FROM JAKE ENGLESMA	12.10	
COLLISTER, CAMERON			TOTAL		12.10
SUCCESSOR TO JOUGHIN TORRANCE RANCH	136.82		EQUILON ENTERPRISES, LLC		
QUITCLAIMED TO NORMANDIE PARK	-136.82		SUCCESSOR TO TEXACO REFINING AND MARKETING, INC	3,432.00	
TOTAL		0.00	SOLD TO SHELL OIL PRODUCTS US	-3,432.00	
COLUMBIA BROADCASTING SYSTEM, INC (NOW KNOWN AS CBS INC)			TOTAL		0.00
CONOCOPHILLIPS COMPANY			ETCHEMENDY, CAROLINE, ESTATE OF	8.20	
SUCCESSOR TO TOSCO CORPORATION (NOW KNOWN AS PHILLIPS 66 COMPANY)			SOLD TO CARSON-HARBOR VILLAGE MOBILE HOME PARK	-8.20	
COST, EDWARD AND EMILY	7.40		TOTAL		0.00
SOLD TO BEN CLUFF DAIRY	-7.40		EVERGREEN AMERICA CORP		
TOTAL		0.00	SUCCESSOR TO POTHOS CORP	5.40	
CURTIS, OWEN W	3.80		TOTAL		5.40
SOLD TO SOUTHERN CALIFORNIA WATER CO	-3.44		EWING, CARMELITA ROSECRANS	91.30	
TOTAL		0.36	SOLD TO SOUTHERN CALIFORNIA WATER CO	-91.30	
DEL AMO ESTATE CO	121.00		TOTAL		0.00
SOLD TO DOMINGUEZ WATER CORP	-121.00		EWING, NED ET AL		
TOTAL		0.00	SUCCESSOR IN PART TO ISABEL J GRANZ ESTATE	6.50	
DELANEY, GOLDA, ESTATE OF (FORMERLY ARTHUR J DELANEY)			SOLD TO R A WATT, INC	-6.50	
SUCCESSOR TO BEGO CORP	4.10		TOTAL		0.00
TOTAL		4.10	FLESH, LESLIE R AND ANDOR PASTERNAK, ET AL		
DENNIS, ESTHER M SHEETS (FORMERLY ESTHER M SHEETS)	5.50		SUCCESSORS TO ALFRED D AND RUTH SEABACK	3.50	
SOLD TO TORRANCE, CITY OF	-5.50		SOLD TO STANLEY C LAGERLOF	-3.50	
TOTAL		0.00	TOTAL		0.00
DESSER ENTERPRISES, INC.			FLETCHER OIL AND REFINING CO (FORMERLY FLETCHER OIL CO)	86.30	
SECOND WEST COAST BASIN JUDGMENT	0.00	0.00	SUCCESSOR TO FLETCHER, ROBERT G ET AL	3.70	
SOLD TO MYRON Z. CHLAVIN AND NETTIE DESSER TRUST AND JHD PROPERTIES, LLC	-0.00		SOLD TO WESTERN WATER CO	-90.00	
TOTAL		0.00	TOTAL		0.00
DOMINGUEZ ESTATE CO	254.00		FLETCHER, ROBERT G, DANIEL S, AND WILFRED O		
SOLD TO DOMINGUEZ WATER CORP	-254.00		SUCCESSOR TO FRED A JUNGQUIST	3.70	
TOTAL		0.00	SOLD TO FLETCHER OIL AND REFINING CO	-3.70	
DOMINGUEZ WATER CORP (NOW KNOWN AS DOMINGUEZ WATER CO)			TOTAL		0.00
DOMINGUEZ WATER CO	9,477.80		FUJIMOTO, SAMUEL R (FORMERLY KNOWN AS FUJIMOTO, SAMUEL R AND RAYMOND S)		
(FORMERLY KNOWN AS DOMINGUEZ WATER CORP)			SUCCESSOR IN PART TO H J AND DAISY	20.00	
SUCCESSOR TO CARSON ESTATE CO	130.00		EARLY		
SUCCESSOR TO DEL AMO ESTATE CO	121.00		SOLD TO FUJIMOTO, SAMUEL R, STEVEN T AND JON T JOINT TENANTS	-20.00	
SUCCESSOR TO DOMINGUEZ ESTATE CO	254.00		TOTAL		0.00
SUCCESSOR TO DON WILSON BUILDERS	32.60		FUJIMOTO, SAMUEL R AND RAYMOND S (SEE FUJIMOTO, SAMUEL R)		
SUCCESSOR TO HEYDENBECK, JEANETTE R	0.70		FUJIMOTO, SAMUEL R, STEVEN T AND JON K, JOINT TENANTS		
SUCCESSOR TO NAKANO, KIKUNO, ET AL	19.30		SUCCESSOR TO FUJIMOTO, SAMUEL R	20.00	
SUCCESSOR IN PART TO H J EARLY	91.00		TOTAL		20.00
SUCCESSOR IN PART TO R A WATT, INC	61.85		FULLILOVE, ROBERT L	1.00	
SOLD IN PART TO WATSON LAND CO	-37.60		SOLD TO STATE OF CALIFORNIA	-1.00	
SUCCESSOR TO THORPE, GREGORY	11.80		TOTAL		0.00
DOMINGUEZ WATER CO MERGED WITH AND INTO CALIFORNIA WATER SERVICE CO, WATERMASTER ACCOUNT KNOWN AS CALIFORNIA WATER SERVICE CO (DOMINGUEZ)	-10,162.45		FUTURA INDUSTRIES, INC		
			SUCCESSOR TO SPANISH AMERICAN INSTITUTE	44.40	
			SOLD TO KAUFMAN, LEO AND SHELDON BAER	-44.40	
			TOTAL		0.00

GARRETT CORP, THE			MANAGEMENT L.P.		
SUCCESSOR TO SHINODA BROTHERS INC	22.50		TOTAL		104.10
TRANSFERRED TO ALLIED-SIGNAL INC (TORRANCE OFFICE)	-22.50		HOCKWALD, SIGMUND S AND LIONEL S SOLD TO HILLSIDE MEMORIAL PARK	12.50 -12.50	
TOTAL		0.00	TOTAL		0.00
GATX TANK STORAGE TERMINALS CORP			HOLLYWOOD PARK INC		
SUCCESSOR TO PHILLIPS PETROLEUM CO	167.00		(FORMERLY HOLLYWOOD TURF CLUB) (NOW KNOWN AS HOLLYWOOD PARK OPERATING CO)		
SOLD TO KINDER MORGAN LIQUIDS TERMINALS, LLC.	-167.00		HOLLYWOOD PARK LAND COMPANY, LLC SUCCESSOR TO CHURCHILL DOWNS CALIFORNIA COMPANY		282.00
TOTAL		0.00	TOTAL		282.00
GEORGIA-PACIFIC CORP			HOLLYWOOD PARK OPERATING CO (FORMERLY HOLLYWOOD PARK INC)		282.00
SUCCESSOR TO COAST FOREST PRODUCTS	3.40		SOLD TO CHURCHILL DOWNS CALIFORNIA CO	-282.00	
SOLD TO INGLEWOOD, CITY OF	-3.40		TOTAL		0.00
TOTAL		0.00	HOLLYWOOD TURF CLUB (NOW KNOWN AS HOLLYWOOD PARK INC)		
GERAHUE LAND CO			HONEYWELL INTERNATIONAL INC		
SUCCESSOR AND ASSIGNEE FOR A S JOHNSTON DRILL CO	11.90		MERGED WITH ALLIED-SIGNAL INC (EL SEGUNDO AND TORRANCE OFFICES) AND THE CORP NAME CHANGED TO HONEYWELL INTERNATIONAL INC		277.50
ABANDONED WATER RIGHT	-11.90		SOLD IN PART TO CALIFORNIA WATER SERVICE CO (DOMINGUEZ)	-255.00	
TOTAL		0.00	TOTAL		22.50
GILLINGHAM, FLORENCE R, ET AL	2.40		HONOLD, KRISTIN BRANDSMA SUCCESSOR IN PART TO ESTATE OF JOHN GRANT	11.80	11.80
TOTAL		2.40	HORNSTRA, WILBUR	14.10	
GOLDEN STATE WATER COMPANY			SOLD TO JAKE ENGELSMA	-14.10	
SUCCESSOR TO SOUTHERN CALIFORNIA WATER COMPANY (NAME CHANGE)	7,502.24		TOTAL		0.00
TOTAL		7,502.24	HUGHES AIRCRAFT (SEE 1981 JUDGMENT ORDER)	0.00	0.00
GONZALES, FELIPE AND GABRIELA (NOW KNOWN AS GONZALES, GABRIELA AND MARIA R)			HUNT, DONALD G		
GONZALES, GABRIELA AND MARIA R (FORMERLY GONZALES, FELIPE AND GABRIELA)	34.30		SUCCESSOR TO JAMES SCANDA	1.90	
SOLD TO TORRANCE, CITY OF	-34.30		SOLD TO KENICHI INOSE	-1.90	
TOTAL		0.00	TOTAL		0.00
GRAND LAND CO			INDUSTRIAL CHEMICAL DIVISION, ALLIED CHEMICAL CORP (FORMERLY ALLIED CHEMICAL CORP, GEN CHEMICAL CO) (NOW KNOWN AS ALLIED CORP)		
SUCCESSOR IN PART TO SMITH, A H, ET AL	5.70		INGLEWOOD, CITY OF	4,382.00	
ABANDONED WATER RIGHTS 1961-62	-5.70		SUCCESSOR TO ABELL, FRANK	1.80	
TOTAL		0.00	SUCCESSOR TO BOISE CASCADE BUILDING CO	16.92	
GRANT, JOHN, ESTATE OF	59.00		SUCCESSOR TO GEORGIA-PACIFIC CORP	3.40	
APPORTIONED IN PART TO BLACK, DANA	-11.80		SUCCESSOR TO KAUFMAN, LEO AND SHELDON BAER	44.40	
APPORTIONED IN PART TO BRANDSMA, MAYNARD	-11.80		SUCCESSOR IN PART TO GEORGE R MURDOCK	1.37	
APPORTIONED IN PART TO HONOLD, KRISTIN BRANDSMA	-11.80		TOTAL		4,449.89
APPORTIONED IN PART TO THORPE, GREGORY	-11.80		INOSE ET AL (KEN K INOSE, KAY K INOSE, KIYOKO YOSHIYAMA, KENICHI INOSE, KAYOKO K INOSE AND DAVID T NAKATANI, TRUSTEE OF THE INOSE CHILDREN TRUST U/D/T DATE 11/1/78) (FORMERLY INOSE, KENICHI)		
APPORTIONED IN PART TO THORPE, TERRENCE	-11.80		SUCCESSOR TO HUNT, DONALD G	1.90	
TOTAL		0.00	SUCCESSOR TO THAXTER, RALPH AND LOIS A LENOIR	3.50	
GRANZ, ISABELA J	380.00		SOLD TO POTHOS CORP	-5.40	
PARTITIONED TO HEIRS:			TOTAL		0.00
ISABELA J GRANZ ESTATE	-33.80		INOSE, KENICHI (NOW KNOWN AS INOSE ET AL)		
JOUGHIN TORRANCE RANCH	-212.42		JENKINS, HARRY C		
GEORGE R MURDOCK	-15.12		SUCCESSOR TO H L PERRY	1.80	
EMMA J OSBORN	-32.66		SOLD TO ABC NURSERY, INC	-1.80	
SUBJECT TO LONG TERM LEASE TO: STANDARD OIL CO OF CALIF	-59.60		TOTAL		0.00
SUPERIOR OIL CO	-26.40		JOHNS-MANVILLE PRODUCTS CORP (SEE JOHNS-MANVILLE SALES CORP)		
TOTAL		0.00	JOHNS-MANVILLE SALES CORP (FORMERLY: JOHNS-MANVILLE PRODUCTS CORP MANVILLE SERVICE CORP) (NOW KNOWN AS MANVILLE SALES CORP)		
GRANZ, ISABELA J, ESTATE OF			TOTAL		0.00
SUCCESSOR IN PART TO ISABELA J GRANZ	33.80		JOHNSTON, A S, DRILLING CO	11.90	
SOLD IN PART TO RICHARD BARCLAY AND R A WATT	-13.55		ASSIGNED TO GERAHUE LAND CO	-11.90	
SOLD IN PART TO NED EWING, ET AL	-6.50		TOTAL		0.00
SOLD IN PART TO R A WATT, INC	-13.75		JONES, ANNA MAE	50.20	
TOTAL		0.00	SOLD TO CITY OF TORRANCE	-50.20	
HARRIS, R AND L			TOTAL		0.00
SUCCESSOR TO LAWRENCE I LISTON	0.70		JOUGHIN TORRANCE RANCH		
DISCLAIMED WATER RIGHT	-0.70		SUCCESSOR IN PART TO ISABELA J GRANZ	212.42	
TOTAL		0.00	SOLD IN PART TO BARCLAY HOLLANDER CURCI INC	-3.33	
HARRIS TUBE, INC			SOLD IN PART TO BOISE CASCADE BUILDING CO	-16.92	
SUCCESSOR IN PART TO B ROBINSON AND ASSOCIATES	0.70		SOLD IN PART TO COLLISTER, CAMERON	-136.82	
TRANSFERRED TO AUTOMATION IND INC- HARRIS TUBE	-0.70		SOLD IN PART TO R A WATT, INC	-55.35	
TOTAL		0.00			
HAWTHORNE, CITY OF	1,882.00				
TOTAL		1,882.00			
HENDERSON, BEATRICE M	1.30				
ABANDONED WATER RIGHT	-1.30				
TOTAL		0.00			
HEYDENBECK, JEANETTE R (FORMERLY JEANETTE R REIFSNYDER)	0.70				
SOLD TO DOMINGUEZ WATER CORP	-0.70				
TOTAL		0.00			
HILLSIDE MEMORIAL PARK	16.70				
SUCCESSOR TO SANTA FE LAND IMPROVEMENT CO	39.50				
SUCCESSOR TO SIGMUND S AND LIONEL S HOCKWALD	12.50				
SUCCESSOR TO THORPE, TERRENCE	11.80				
SUCCESSOR TO BRANDSMA, MAYNARD	11.80				
SUCCESSOR TO AQUA CAPITAL	11.80				

West Coast Basin Watermaster

TOTAL	0.00	TOTAL		363.70
JUNGQUIST, FRED A (FORMERLY KATHERINE P WOODMAN)	3.70	LOS ANGELES COUNTY SANITATION DIST NO 2	102.00	
SOLD TO ROBERT G FLETCHER ET AL	-3.70	TOTAL		102.00
TOTAL	0.00	LOS ANGELES COUNTY WATERWORKS DISTRICT NO 13 (NOW KNOWN AS LOMITA, CITY OF WATER SYSTEM WWD 13)		
KAHLERT, ET AL		LOS ANGELES COUNTY WATERWORKS DISTRICT NO 22 SOLD TO SOUTHERN CALIF WATER CO	551.00	
AND SUCCESSOR IN PART TO KELLY PIPE CO	18.90	TOTAL	-551.00	0.00
SOLD TO SPARKLETT'S DRINKING WATER CORP	-18.90			
TOTAL	0.00	LOS ANGELES COUNTY WESTERN AVE GOLF COURSE (FORMERLY BOARD OF RETIREMENT OF THE LOS ANGELES COUNTY EMPLOYEES RETIREMENT SYSTEM)		
KAUFMAN, LEO AND SHELDON BAER		(NOW KNOWN AS LOS ANGELES CHESTER L WASH GOLF)		
SUCCESSOR TO FUTURA INDUSTRIES INC	44.40	LOYOLA MARYMOUNT UNIVERSITY (FORMERLY LOYOLA UNIVERSITY OF LOS ANGELES)	48.10	
SOLD TO CITY OF INGLEWOOD	-44.40	TOTAL		48.10
TOTAL	0.00	MANHATTAN BEACH, CITY OF	1,131.20	
KELLY PIPE CO	49.00	TOTAL		1,131.20
SOLD IN PART TO STATE OF CALIFORNIA	-16.30	MANVILLE SALES CORP	881.00	
SOLD IN PART TO KAHLERT, ET AL	-18.90	(FORMERLY: JOHNS-MANVILLE SALES CORP JOHNS-MANVILLE PRODUCTS CORP MANVILLE SERVICE)		
SOLD IN PART TO SPARKLETT'S DRINKING WATER CORP	-13.80	SOLD TO ATLANTIC RICHFIELD CO	-881.00	
TOTAL	0.00	TOTAL		0.00
KINDER MORGAN LIQUIDS TERMINALS, LLC.		MANVILLE SERVICE CORP (SEE JOHNS-MANVILLE SALES CORP)		
SUCCESSOR TO GATX TANK STORAGE TERMINALS CORP.	167.00	MARTIN BROTHERS BOX CO, INC	3.40	
TOTAL	167.00	SOLD TO SOUTHWEST STEEL ROLLING MILLS	-3.40	
KITA, ISAMU, KASUO, AND YOSHIKI R	32.60	TOTAL		0.00
SOLD TO DON WILSON BUILDERS	-32.60	MAYFLOWER NURSERIES (HERBERT SAKAYE FUKUWAI, DBA)	0.00	
TOTAL	0.00	TOTAL		0.00
KURTZ, GLADYS	3.50	MCCANDLESS, JAMES	6.70	
SOLD TO SPARKLETT'S DRINKING WATER CORP	-3.50	SOLD TO SPARKLETT'S DRINKING WATER CORP	-6.70	
TOTAL	0.00	TOTAL		0.00
LAGERLOF, STANLEY C		MCDONNELL DOUGLAS CORP (FORMERLY DOUGLAS AIRCRAFT, CO INC)		
SUCCESSOR TO LESLIE R FLESCHE AND ANDOR PASTERNAK, ET AL	3.50	LONG TERM LEASE FROM UNITED STATES NAVY DEPARTMENT	1.70	
SOLD TO SHELL OIL CO	-3.50	TRANSFERRED TO BOEING COMPANY BY VIRTUE OF A MERGER	-1.70	
TOTAL	0.00	TOTAL		0.00
LAWLER, JAMES K	3.10	MONETA MUTUAL WATER CO	916.00	
SOLD TO B ROBINSON AND ASSOC	-3.10	SOLD TO CITY OF TORRANCE	-916.00	
TOTAL	0.00	TOTAL		0.00
LERMENS, EVELYN (FORMERLY LERMENS, ALFRED)	0.70	MONIZ, JOE JR	2.20	
SOLD TO COASTLINE CHURCH OF CHRIST	-0.70	SOLD TO STATE OF CALIFORNIA	-2.20	
TOTAL	0.00	TOTAL		0.00
LEUZINGER, EMMA L	1.40	MONTROSE CHEMICAL CORPORATION OF CALIFORNIA SUCCESSOR TO CARSON-HARBOR VILLAGE MOBILE HOME PARK (9-28-2011)	1.20	
TOTAL	1.40	TOTAL		1.20
LISTON, LAWRENCE	0.70	MORAN, RONALD E	9.00	
SOLD TO R AND L HARRIS	-0.70	SUCCESSOR IN PART TO COLUMBIA BROADCASTING SYSTEM, INC		
TOTAL	0.00	SOLD TO CITY OF TORRANCE	-9.00	
LITTLE, WILLIAM		TOTAL		0.00
SUCCESSOR TO ROCKWELL, MICHAEL	0.10	MORI, ROY H AND KENJI	5.60	
SOLD TO WATT INDUSTRIAL PROPERTIES	-0.10	SECOND WEST COAST BASIN JUDGMENT		
TOTAL	0.00	SOLD TO NOZAKI, SUMIKICHI	-2.00	
LOCKHEED MARTIN CORPORATION		TOTAL		3.60
SUCCESSOR TO OCEAN INDUSTRIES	0.10	MURDOCK, GEORGE R	15.12	
TOTAL	0.10	SUCCESSOR IN PART TO ISABELA J GRANZ		
LOMITA, CITY OF WATER SYSTEM (WWD 13) (FORMERLY LOS ANGELES COUNTY WATERWORKS DISTRICT NO 13)	1,352.00	SOLD IN PART TO R BARCLAY AND R A WATT	-13.75	
TOTAL	1,352.00	SOLD IN PART TO CITY OF INGLEWOOD	-1.37	
LONG BEACH, CITY OF	0.70	TOTAL		0.00
TOTAL	0.70	MYRON Z. CHLAVIN AND NETTIE DESSER TRUST AND JHD PROPERTIES, LLC	0.00	
LOPES, FRANK	3.70	SUCCESSOR TO DESSER ENTERPRISES, INC.		0.00
TOTAL	3.70	TOTAL		0.00
LOS ANGELES, CITY OF	1,503.00	NAKANO, KIKUNO, ET AL	19.30	
TOTAL	1,503.00	SOLD TO DOMINGUEZ WATER CORP	-19.30	
LOS ANGELES COUNTY-ALONDRA PARK	28.70	TOTAL		0.00
SUCCESSOR TO LOS ANGELES COUNTY FLOOD CONTROL DIST	39.00	NAVARRO, T C	53.90	
MERGED WITH LOS ANGELES COUNTY CHESTER L. WASHINGTON GOLF COURSE UNDER NEW NAME "LOS ANGELES COUNTY RECREATION FACILITIES"	-67.70	SOLD TO HILARIO S AND EMMA ALWAG	-53.90	
TOTAL	0.00	TOTAL		0.00
LOS ANGELES COUNTY CHESTER L WASHINGTON GOLF COURSE	296.00	NORAIR, A DIVISION OF NORTHRUP CORP (FORMERLY KNOWN AS NORTHRUP AIRCRAFT, INC) (NOW KNOWN AS NORTHRUP CORP)		
(FORMERLY LOS ANGELES COUNTY WESTERN AVENUE GOLF COURSE)		NORMANDIE PARK	136.82	
MERGED WITH LOS ANGELES COUNTY ALONDRA PARK UNDER NEW NAME "LOS ANGELES COUNTY RECREATION FACILITIES"	-296.00	SUCCESSOR TO COLLISTER, CAMERON		
TOTAL	0.00	SOLD TO CITY OF TORRANCE	-136.82	
LOS ANGELES COUNTY FLOOD CONTROL DISTRICT	37.60	TOTAL		0.00
SUCCESSOR IN PART TO A H SMITH, ET AL	1.40	NORTHRUP CORP (FORMERLY KNOWN AS NORAIR, A DIV OF NORTHRUP CORP)	38.15	
SOLD TO LOS ANGELES COUNTY - ALONDRA PARK	-39.00	TOTAL		38.15
TOTAL	0.00			
LOS ANGELES COUNTY RECREATION FACILITIES				
MERGER OF LOS ANGELES COUNTY ALONDRA PARK, AND LOS ANGELES COUNTY CHESTER L. WASHINGTON GOLF COURSE	67.70			
TOTAL	296.00			

NOZAKI, SUMIKICHI			SUCCESSOR TO CHANDLERS PALOS VERDES SAND AND GRAVEL CORP.	290.00	
SUCCESSOR IN PART TO MORI, ROY H AND KENJI	2.00		TOTAL		290.00
SUCCESSOR IN PART TO UNITED CALIFORNIA BANK	5.00		RUFFNER CORP		
TOTAL		7.00	SUCCESSOR TO LOUIS M SEPULVEDA ABANDONED WATER RIGHT	0.70	
OCEAN INDUSTRIES			TOTAL	-0.70	0.00
SUCCESSOR TO WATT INDUSTRIAL PROPERTIES (NAME CHANGE)	0.10		RYAN AERONAUTICAL CO	20.20	
SOLD TO LOCKHEED MARTIN CORPORATION	-0.10		SOLD TO SOUTHERN CALIFORNIA WATER CO	-20.20	
TOTAL		0.00	TOTAL		0.00
OSBORN, EMMA J			SANTA FE LAND IMPROVEMENT CO	39.50	
SUCCESSOR IN PART TO ISABELA J GRANZ	32.66		SOLD TO HILLSIDE MEMORIAL PARK	-39.50	
SOLD TO R BARCLAY AND R A WATT	-32.66		TOTAL		0.00
TOTAL		0.00	SCANDA, JAMES AND GEORGE NASSIN	1.90	
OTANI, CHISATO	0.00		SOLD TO DONALD G HUNT	-1.90	
TOTAL		0.00	TOTAL		0.00
PACIFIC CREST CEMETERY CO	17.70		SCHLAEGEL, KEITH W AND OPAL B	13.60	
SUCCESSOR TO H S SCOTT	9.50		SOLD TO SIDNEY R AND CHARLOTTE W TITLE	-13.60	
SUCCESSOR TO WADA, KAORU AND SATORU	12.20		TOTAL		0.00
SOLD TO SCI CALIFORNIA FUNERAL SERVICES INC.		-39.40	SCI CALIFORNIA FUNERAL SERVICES INC		
TOTAL		0.00	SUCCESSOR TO PACIFIC CREST CEMETERY CO	39.40	
PALOS VERDES BEGONIA FARM			TOTAL		39.40
SUCCESSOR TO GUS A BAUMAN	0.00		SCOTT, H S		
TOTAL		0.00	SUCCESSOR TO W F BURKE AND LOIS PRICE	9.50	
PALOS VERDES WATER CO	999.00		QUITCLAIMED TO PACIFIC CREST CEMETERY CO	-9.50	
SOLD TO CALIFORNIA WATER SERVICE CO	-999.00		TOTAL		0.00
TOTAL		0.00	SEABACK, ALFRED D AND RUTH	3.50	
PARK WATER CO	160.00		SOLD TO LESLIE R FLESH AND OR	-3.50	
SOLD TO SOUTHERN CALIFORNIA WATER	-160.00		PASTERNAK, ET AL		
TOTAL		0.00	TOTAL		0.00
PARKE, ZORAIDA	1.80		SEPULVEDA, LOUIS M	0.70	
SOLD TO H L PERRY	-1.80		ACQUIRED BY RUFFNER CORP	-0.70	
TOTAL		0.00	TOTAL		0.00
PASCHKE, WILLIAM JOSEPH	0.02		SHEETS, ESTHER M		
ABANDONED WATER RIGHT	-0.02		(FORMERLY CLYDE L SHEETS)		
TOTAL		0.00	(SEE DENNIS, ESTHER M SHEETS)		
PERRY, H L			SHELL OIL CO	4,516.00	
SUCCESSOR TO ZORAIDA PARKE	1.80		SUCCESSOR TO LAGERLOF, STANLEY C	3.50	
SOLD TO HARRY C JENKINS	-1.80		SOLD IN PART TO UNION OIL CO OF CAL	-1,974.00	
TOTAL		0.00	SOLD IN PART TO UNION OIL CO OF CAL	-1,526.00	
PHILLIPS 66 COMPANY			TOTAL		1,019.50
(FORMERLY CONOCOPHILLIPS COMPANY)	6,170.00		SHELL OIL PRODUCTS US		
TOTAL		6,170.00	SUCCESSOR TO EQUILON ENTERPRISES, LLC	3,432.00	
PHILLIPS PETROLEUM CO			SOLD TO TESORO REFINING AND MARKETING COMPANY	-3,432.00	
(FORMERLY TIDEWATER OIL CO)	167.00		TOTAL		0.00
SOLD TO GATX TANK STORAGE TERM CORP	-167.00		SHINODA BROTHERS, INC		
TOTAL		0.00	SECOND WEST COAST BASIN JUDGMENT	22.50	
POTHOS CORP			SOLD TO GARRETT CORP, THE	-22.50	
SUCCESSOR TO INOSE ET AL	5.40		TOTAL		0.00
SOLD TO EVERGREEN AMERICA CORP	-5.40		SMITH, A H,(SAM SURBER AND FRED A SMITH)	9.70	
TOTAL		0.00	SOLD IN PART TO STATE OF CALIFORNIA	-2.60	
REHOR, JOSEPHINE P	2.20		SOLD IN PART TO GRAND LAND CO	-5.70	
TOTAL		2.20	SOLD IN PART TO L A CO FLOOD CONTROL DISTRICT	-1.40	
REIFSNYDER, JEANETTE R			TOTAL		0.00
(NOW KNOWN AS JEANNETTE R HEYDENBECK)			SOCONY MOBIL OIL CO		
RHODIA, INC			(SEE MOBIL OIL CO)		
(NOW KNOWN AS SOLVAY USA INC.)			SOLVAY USA INC.		
SUCCESSOR TO RHONE-POULENC INC			(NOW KNOWN AS ECO SERVICES OPERATIONS LLC)	0.00	
RHONE-POULENE BASIC CHEMICALS CO			SOUTHERN CALIFORNIA EDISON CO	10.40	
SUCCESSOR TO STAUFFER CHEMICAL CO	521.00		SUCCESSOR TO ASSOCIATED SOUTHERN INVESTMENT CO	46.70	
SOLD TO RHONE-POULENE INC	-521.00		TOTAL		57.10
TOTAL		0.00	SOUTHERN CALIFORNIA WATER CO	6,265.30	
RHONE-POULENC INC			SUCCESSOR TO EWING, CARMELITA ROSECRANS	91.30	
SUCCESSOR TO RHONE-POULENC, BASIC CHEMICALS CO	521.00		SUCCESSOR TO LOS ANGELES COUNTY WATERWORKS DIST NO 22	551.00	
SOLD TO RHODIA, INC	-521.00		SUCCESSOR TO PARK WATER CO	160.00	
TOTAL		0.00	SUCCESSOR TO RYAN AERONAUTICAL CO	20.20	
RICHFIELD OIL CORP			SUCCESSOR TO SOUTHERN PACIFIC CO	166.00	
(NOW KNOWN AS ATLANTIC RICHFIELD CO)			SUCCESSOR IN PART TO OWEN W CURTIS	3.44	
ROBINSON, B, AND ASSOCIATES			SUCCESSOR IN PART TO B ROBINSON AND ASSOCIATES	2.40	
SUCCESSOR TO JAMES K LAWLER	3.10		SUCCESSOR TO WESTERN WATER SERVICE COMPANY	242.60	
SOLD IN PART TO HARRIS TUBE, INC	-0.70		NAME CHANGE TO GOLDEN STATE WATER COMPANY	-7,502.24	
SOLD IN PART TO SOUTHERN CALIFORNIA WATER CO	-2.40		TOTAL		0.00
TOTAL		0.00	SOUTHERN PACIFIC CO	166.00	
ROCKWELL, MICHAEL L			SOLD TO SO CALIFORNIA WATER CO	-166.00	
SUCCESSOR TO BANK OF AMERICA NATIONAL TRUST AND SAVINGS ASSOCIATION (TRUST B 1-51)	0.10		TOTAL		0.00
SOLD TO LITTLE, WILLIAM	-0.10		SOUTHERN WESTERN PORTLAND CEMENT COMPANY	15.00	
TOTAL		0.00	SOLD TO CHANDLERS PALOS VERDES AND GRAVEL CORP	-15.00	
RODRIGUEZ, FLAVIO	6.10		TOTAL		0.00
SOLD TO STATE OF CALIFORNIA	-4.00		SOUTHWEST STEEL ROLLING MILLS		
DISCLAIMED WATER RIGHT	-2.10		SUCCESSOR TO MARTIN BROTHERS BOX CO, INC	3.40	
TOTAL		0.00	SOLD TO COAST FOREST PRODUCTS	-3.40	
ROMAN CATHOLIC ARCHBISHOP OF LOS ANGELES (HOLY CROSS CEMETERY)	72.30				
TOTAL		72.30			
ROLLING HILLS COUNTRY CLUB					

West Coast Basin Watermaster

TOTAL		0.00	SUCCESSOR TO EXXONMOBIL OIL CORP, EXXON MOBIL OIL CORPORATION SUCCESSOR TO MOBIL OIL CORP (FORMERLY SOCONY MOBIL OIL CORP)	2,570.00	
SPANISH AMERICAN INSTITUTE	44.40		SUCCESSOR TO SUPERIOR OIL CO	26.40	
SOLD TO FUTURA INDUSTRIES, INC	-44.40		TOTAL		2,596.40
TOTAL		0.00	TORRANCE SAND AND GRAVEL CORP		
SPARKLETTS DRINKING WATER CORP			SUCCESSOR TO WESTON INVESTMENT CO	184.00	
SUCCESSOR TO ANDERSON, REMBERT C, ET AL	80.50		SOLD TO CHANDLERS PALOS VERDES SAND AND GRAVEL CORP	-184.00	
SUCCESSOR TO CALIFORNIA, STATE OF	26.10		TOTAL		0.00
SUCCESSOR TO KAHLERT, ET AL	18.90		TORRANCE UNIFIED SCHOOL DISTRICT		
SUCCESSOR TO KURTZ, GLADYS	3.50		SUCCESSOR TO HILARIO S AND EMMA ALWAG	59.40	
SUCCESSOR TO MCCANDLESS, JAMES	6.70		SOLD TO CITY OF TORRANCE	-59.40	
SUCCESSOR TO WECHSLER, B A	3.10		TOTAL		0.00
SUCCESSOR IN PART TO KELLY PIPE CO	13.80		TOSCO CORP		
SOLD TO WESTERN WATER CO	-152.60		SUCCESSOR TO UNION OIL CO OF CALIF	6,170.00	
TOTAL		0.00	MERGED INTO CONOCOPHILLIS COMPANY	6,170.00	
STANDARD OIL CO OF CALIFORNIA (NOW KNOWN AS CHEVRON U S A, INC)			TOTAL		0.00
STAUFFER CHEMICAL CO	521.00		TUNE, MATES, ET AL		
SOLD TO RHONE-POULENC BASIC CHEMICALS CO	-521.00		SUCCESSOR TO JOSEPHINE WATKINSON	3.10	
TOTAL		0.00	SOLD TO B A WECHSLER	-3.10	
SUNRISE GROWERS, INC			TOTAL		0.00
SUCCESSOR TO AMERICAN PLANT GROWERS INC	10.00		UNION NURSERY, INC		
SOLD TO AMERICAN PLANT GROWERS, INC	-10.00		SECOND WEST COAST BASIN JUDGMENT	4.70	
TOTAL		0.00	SOLD TO CENTURY BUILDERS	-4.70	
SUPERIOR OIL CO			TOTAL		0.00
SUBJECT TO LONG TERM LEASE FROM ISABELA J GRANZ	26.40		UNION OIL CO OF CALIFORNIA	2,670.00	
SOLD TO MOBIL OIL CORP	-26.40		SUCCESSOR IN PART TO SHELL OIL CO	1,974.00	
TOTAL		0.00	SUCCESSOR IN PART TO SHELL OIL CO	1,526.00	
SWICK, PEGGY	5.50		SOLD TO TOSCO CORP	-6,170.00	
SOLD TO HILARIO AND EMMA ALWAG	-5.50		TOTAL		0.00
TOTAL		0.00	UNITED CALIFORNIA BANK		
TESORO REFINING AND MARKETING COMPANY			SUCCESSOR TO BALLMAN, ROSEMARY N	7.00	
SUCCESSOR TO SHELL OIL PRODUCTS US (NOW KNOWN AS TESORO REFINING & MARKETING COMPANY LLC)			SOLD TO A B C NURSERY, INC	-2.00	
TESORO REFINING & MARKETING COMPANY LLC (FORMERLY TESORO REFINING AND MARKETING COMPANY)	3,432.00		SOLD TO NOZAKI, SUMIKICHI	-5.00	
SUCCESSOR TO ATLANTIC RICHFIELD COMPANY (6-13-2013)	5,309.00		TOTAL		0.00
TOTAL		8,741.00	UNITED STATES NAVY DEPARTMENT	1.70	
TEXACO, INC (NOW KNOWN AS TEXACO REFINING AND MARKETING, INC)			LONG TERM LEASE TO MCDONNELL DOUGLAS CORP PER JUDGEMENT	-1.70	
TEXACO REFINING AND MARKETING, INC (FORMERLY: TEXACO, INC)	3,432.00		TOTAL		0.00
SOLD TO EQUILON ENTERPRISES, LLC	-3,432.00		UNITED STATES STEEL CORP	1,791.00	
TOTAL		0.00	SOLD TO TORRANCE, CITY OF	-1,791.00	
THAXTER, RALPH AND LOIS A LENOIR	3.50		TOTAL		0.00
SOLD TO KENICHI INOSE	-3.50		VERBURG, WILLIAM AND CLARA B	6.70	
TOTAL		0.00	SOLD TO ABC NURSERY, INC	-6.70	
THORPE, GREGORY			TOTAL		0.00
SUCCESSOR IN PART TO ESTATE OF JOHN GRANT	11.80		VUKELICH MIKE, JR.		
SOLD TO DOMINGUEZ WATER CORP	-11.80		SUCCESSOR TO AMERICAN PLANT GROWERS, INC.	10.00	
TOTAL		0.00	TOTAL		10.00
THORPE, TERENCE			WADA, KAORU AND SATORU	12.20	
SUCCESSOR IN PART TO ESTATE OF JOHN GRANT	11.80		SOLD TO PACIFIC CREST CEMETERY CO	-12.20	
SOLD TO HILLSIDE MEMORIAL PARK	-11.80		TOTAL		0.00
TOTAL		0.00	WATKINSON, JOSEPHINE	3.10	
TIDEWATER OIL CO (SEE PHILLIPS PETROLEUM CO)			SOLD TO MATES TUNE, ET AL	-3.10	
TITLE, SIDNEY R AND CHARLOTTE W			TOTAL		0.00
SUCCESSOR TO KEITH W AND OPAL B SCHLAEGEL	13.60		WATSON LAND CO	42.60	
SOLD TO ABC NURSERY, INC	-13.60		SUCCESSOR IN PART TO DOMINGUEZ WATER CORP	37.60	
TOTAL		0.00	TOTAL		80.20
TORRANCE, CITY OF	2,519.00		WATT INDUSTRIAL PROPERTIES		
SUCCESSOR TO BARCLAY HOLLANDER CORP	3.33		SUCCESSOR TO WILLIAM LITTLE	0.10	
SUCCESSOR TO BARCLAY, RICHARD AND WATT, R A	59.96		NAME CHANGE TO OCEAN INDUSTRIES	-0.10	
SUCCESSOR TO BELVIDERE MUTUAL WATER CO	33.40		TOTAL		0.00
SUCCESSOR TO DENNIS, ESTHER M SHEETS	5.50		WATT, R A, INC		
SUCCESSOR TO ALCAST FOUNDRY ET AL	7.20		SUCCESSOR TO NED EWING, ET AL	6.50	
SUCCESSOR TO GONZALES, GABRIELA AND MARIA R	34.30		SUCCESSOR IN PART TO ISABELA J GRANZ	13.75	
SUCCESSOR TO JONES, ANNA MAE	50.20		ESTATE		
SUCCESSOR TO MONETA WATER CO	916.00		SUCCESSOR IN PART TO JOUGHIN TORRANCE RANCH	55.35	
SUCCESSOR TO MORAN, RONALD E	9.00		SOLD TO DOMINGUEZ WATER CORP	-61.85	
SUCCESSOR TO NORMANDIE PARK	136.82		SOLD TO CITY OF TORRANCE	-13.75	
SUCCESSOR TO TORRANCE UNIFIED SCHOOL DISTRICT	59.40		TOTAL		0.00
SUCCESSOR TO UNITED STATES STEEL CORP	1,791.00		WECHSLER, B A		
SUCCESSOR TO WATT, R A, INC	13.75		SUCCESSOR TO MATES TUNE, ET AL	3.10	
TOTAL		5,638.86	SOLD TO SPARKLETTS DRINKING WATER CORP	-3.10	
TORRANCE REFINING COMPANY LLC			TOTAL		0.00
			WESTERN WATER CO		
			SUCCESSOR TO FLETCHER OIL AND REFINING CO	90.00	
			SUCCESSOR TO SPARKLETTS DRINKING WATER CORP	152.60	
			SOLD TO WESTERN WATER SERVICES CO	-242.60	
			TOTAL		0.00
			WESTERN WATER SERVICES CO *		
			SUCCESSOR TO WESTERN WATER CO.	242.60	
			SOLD TO SOUTHERN CALIFORNIA WATER COMPANY	-242.60	
			TOTAL		0.00
			WESTON INVESTMENT CO	184.00	
			SOLD TO TORRANCE SAND AND GRAVEL	-184.00	

CORP		
TOTAL		0.00
WISEBURN SCHOOL DISTRICT	8.20	
TOTAL		8.20
WOODMAN, KATHERINE P (SEE FRED A JUNGQUIST)		
ZEIGLER, MAXWELL T	0.00	
TOTAL		0.00
GRAND TOTAL	64,468.25	64,468.25

* WESTERN WTR. SERV.CO. - PARTY WITH ZERO AR FOR THE DURATION OF LONG-TERM
LEASE AGREEMENT WITH CHEVRON (ENDED JUNE 30, 2013)

Appendix C

Parties to the Amended Judgment and Water Rights Holders
as of
June 2024

ABC Nursery, Inc

Aqua Capital Management LP

Asahi Fancy Koi, Inc.

Atlantic Richfield Company

Automation Industries, Inc.**CBS, Inc.****California Water Service Company (Hermosa Redondo)****California Water Service Company (Dominguez)**

California Water Service Company (Hawthorne Lease)

Carson-Harbor Village Mobile Home Park**Carson-Madrona Company****Century Builders****Chandler's Palos Verdes Sand & Gravel Company****Chevron USA, Inc****Coastline Church of Christ****Curtis, Owen W.****Delaney, Golda, Estate of****El Segundo, City of****Engelsma, Susan Trust****Evergreen America Corp.****Fujimoto, S.R., S.T. & J.K.****Gillingham, Florence R., et al.****Golden State Water Company****Hawthorne, City of****Hillside Memorial Park****Hollywood Park Land Company, LLC****Honeywell International, Inc.****Honold, Kristin Brandsma**

Hughes Aircraft Company

International Plant Growers Inc.

Inglewood, City of

Inglewood Park Cemetery

Kinder Morgan Liquids Terminals, LLC**Leuzinger, Emma L. Estate of****Lockheed Martin Corporation****Lomita, City of Water System**Water Rights Holders are in **bold**.**Long Beach, City of****Lopes, Frank****Los Angeles, City of****Los Angeles County Parks & Recreation****Los Angeles County Sanitation District 2****Loyola Marymount University****Manhattan Beach, City of**

Mayflower Nurseries

Boeing Company (McDonnell Douglas Corporation - Merged)**Torrance Refining Company LLC****Montrose Chemical Corporation****Mori, Roy H. and Kenji**

Myron Z. Chlavin & Nettie Desser Trust & JHD Pr.

Northrop Corporation**Nozaki, Sumikichi**

Ocean Industries

Pacific Crest Cemetery Company

Palos Verdes Begonia Farm

Phillips 66 Company**Rehor, Josephine P.****Eco Services Operation, LLC****Rolling Hills Country Club**

Rolling Hills Vista

Roman Catholic Archbishop of Los Angeles**SCI California Funeral Services Inc. (New Party)****Shell Oil Company****Southern California Edison Company****Tesoro Refining and Marketing Company****Torrance, City of****Vukelich, Mike Jr.**

Water Replenishment District

Watson Land Company

West Basin Municipal Water District

Western Water Service Company

Wiseburn School District

Zeigler, Maxwell T.

Non-Parties with Water Rights

Appendix D

Erratum of West Coast Basin Watermaster Annual Report
for July 1, 2022- June 30, 2023

Report Page No.	Original Text [Error Type]	Correction
1	<u>Summary of Pertinent Data</u> Adjudicated Rights Extractions: 32,482 Total Water Use by Parties:178,392 [Pumper Correction]	<u>Summary of Pertinent Data</u> Adjudicated Rights Extractions: 32,415 Total Water Use by Parties: 178,325
14	<u>Table 1</u> Eco Services Operations LLC Amount Pumped: 342.74 af [Pumper Correction]	<u>Table 1</u> Eco Services Operations LLC Amount Pumped: 260.21 af [Pumper Correction]
15	<u>Table 1</u> Tesoro Refining Company LLC Amount Pumped: 10,607.01 af [Pumper Correction]	<u>Table 1</u> Tesoro Refining Company LLC Amount Pumped: 10,622.15 af
39	<u>Appendix A</u> Tesoro Refining Company LLC Groundwater Extractions: 10,607.01 af [Pumper Correction]	<u>Appendix A</u> Tesoro Refining Company LLC Groundwater Extractions: 10,622.15 af
35	<u>Appendix A</u> Eco Services Operations LLC Groundwater Extractions: 342.74 af [Pumper Correction]	<u>Appendix A</u> Eco Services Operations LLC Groundwater Extractions: 260.21 af