

# WATERMASTER SERVICE

## IN THE WEST COAST BASIN - LOS ANGELES COUNTY

July 1, 2019 - June 30, 2020

December 2020



## WEST COAST BASIN WATERMASTER

### WEST COAST BASIN WATER RIGHTS PANEL

Prepared by the Administrative Body



This report is available at [www.wrd.org](http://www.wrd.org)

Printed copies are available.

Send requests to:

[watermaster@wrd.org](mailto:watermaster@wrd.org)

# WATERMASTER SERVICE

IN THE WEST COAST BASIN  
LOS ANGELES COUNTY

July 1, 2019 - June 30, 2020

December 2020

**WEST COAST BASIN  
WATER RIGHTS PANEL**



Prepared by the  
Water Replenishment District of Southern California (WRD)  
West Coast Basin Administrative Body

for the  
West Coast Basin Watermaster Water Rights Panel

Adopted on  
December 1, 2020

# Contents

<b>Summary of Pertinent Data</b>	1
<b>Introduction</b>	
A. Executive Summary	2
B. Background	2
<b>Water Use</b>	
A. Adjudicated Rights Extractions by Parties	4
B. Groundwater Storage Activity by Parties	4
C. Annual Extraction Limit and Over-extractions	5
D. Extractions of Contaminated Groundwater	5
E. Extractions by Non-Parties	5
F. Extraction Exemptions	6
G. Adjudicated Rights Transfers	6
H. Exchange Pool	7
I. Extraction Wells	7
J. Meter Testing Program	7
<b>Water Supply</b>	
A. Precipitation	9
B. Groundwater Recharge	9
C. In-Lieu Replenishment	10
D. Imported Water	10
E. Recycled Water	10
F. Total Water Use	10
G. Exported Water	11
H. Increased Extraction in the Basin for Certain Purveyors Serving Overlying Communities	11
I. Seawater Intrusion Barrier Projects	11
J. Groundwater Levels	11
<b>Watermaster Costs and Budget</b>	12

## Tables

1	Water Rights Accounting	14
2	Storage Accounting	16
3	Water Put Into Storage	17
4	Water Extracted from Storage	17
5	Storage Transfers	17
6	Historical Storage Summary	18
7	Over-extractions	18
8	Non-Consumptive Water Use Permits	19
9	Extractions by Non-Parties	19
10	Leases	20
11	Permanent Transfers	21
12	Exchange Pool	22
13	Extraction Wells Completed	22
14	Extraction Wells Destroyed	22
15	Replenishment Operations	22
16	WRD In-Lieu Recharge	23
17	Imported Water Use	23
18	Recycled Water Use	24
19	Seawater Intrusion Barrier Project Operations	24
20	Apportionment of Budget Among Rights Holders	25

## Figures

1	West Coast Basin (showing groundwater production)	27
2	Monthly Water Production (excludes non-consumptive use)	28
3	West Coast Basin (showing key wells and facilities)	29
4	Monthly Rainfall	30
5	Total Water Use	31
6	Water Level Hydrographs	32

## Appendixes

A	Groundwater Extractions July 2019 - June 2020	33
B	Succession of Adjudicated Rights as of June 2020	40
C	Parties to the Amended Judgment as of June 2020	47
D	Erratum of West Coast Basin Watermaster Annual Report for July 1, 2018 - June 30, 2019	49

# Governance

## 2019-2020 AY

### West Coast Basin Administrative Body

Water Replenishment District

**President**

Vera Robles DeWitt

*Division 5*

**Vice-President**

Sergio Calderon

*Division 4*

**Secretary**

Willard H. Murray, Jr

*Division 1*

**Treasurer**

Rob Katherman

*Division 2*

**Director**

John D. S. Allen

*Division 3*

**General Manager**

Robb Whitaker

### Storage Panel

Water Replenishment District

Board of Directors

West Coast Basin Water Rights Panel

### West Coast Basin Water Rights Panel

**Chair**

Katherine Nutting

*Golden State Water Company*

**Vice-Chair**

Shawn Igoe

*City of Manhattan Beach*

**Treasurer**

Andy Darlak

*City of Torrance*

Ron Sorensen

*California Water Service Company*

Charles Campbell

*Torrance Refining Company*

### Administrative Body Staff

Ted Johnson

Esther Valle Rojas

Andrew Thomas

Tiffani Fong

Greg Osti

Josi Jenneskens

## Summary of Pertinent Data

Item	Administrative Year 2018 - 2019	Administrative Year 2019 - 2020
Parties	69	69
Rights Holders	56	56
Active pumpers	36	36
Active nonparties	0	0
Adjudicated Rights (acre-feet)	64,468.25	64,468.25
Water put into Storage	1,127.70	2,258.90
Rainfall (inches)	17.77	14.02
Injection at barrier projects (acre-feet)	19,702	22,722
Watermaster expenses, total	\$108,428	\$108,428
Watermaster expenses, per Adjudicated Rights	\$1.68	\$1.68
Adjudicated Rights Extractions (acre-feet) <sup>1</sup>	27,027	27,603
Recycled water use by parties (acre-feet)	23,455	21,818
Imported water use by parties (acre-feet)	143,121	133,075
Exported water use by parties (acre-feet)	0	0
<b>Total water use by parties (acre-feet)</b>	<b>193,603</b>	<b>182,487</b>

<sup>1</sup> Excludes extractions by parties with non-consumptive water use permits and by non-parties.

# Introduction

## A. Executive Summary

The 2019-2020 West Coast Basin Watermaster Report, developed by the Administrative Body and adopted by the Water Rights Panel, summarizes information on groundwater extractions, storage accounts, use of imported water and recycled water, replenishment operations and the budget and finances of the West Coast Basin (Basin) Watermaster during the 2019-2020 administrative year (AY). This report complies with the provisions set forth in the West Basin Amended Judgment.

During the 2019-2020 AY, the Basin experienced a 2% increase in groundwater production, when compared to the previous AY, despite the coronavirus pandemic that created a stay-at-home order for residents and closed non-essential businesses starting in mid-March 2020. Also, a noticeable highlight in the Basin includes the 2,258.90 acre-feet (af) of water put into storage, which is a 100% increase from the previous AY.

The report is organized by three sections, including Water Use, Water Supply, and Watermaster Costs and Budget. In addition, the report provides various tables and figures describing the narrated information. Lastly, for the first time, this annual report has a new appendix the "Erratum of the West Coast Basin Watermaster Annual Report for July 1, 2018- June 30, 2019," which provides a list of corrected errors to the previous annual report (Appendix D).

## B. Background

The Basin underlies 160 square miles in the southwestern part of the coastal plain of Los Angeles County. Figure 1 shows the location and adjudicated boundaries of the Basin. The Basin is bounded on the west by the Santa Monica Bay, on the north by the Ballona Escarpment, on the east by the Newport-Inglewood Uplift, and on the south by the San Pedro Bay and the Palos Verdes Hills. Twenty incorporated cities and several unincorporated areas overlie the Basin.

An essential portion of the water needed by the residents and industries in the area overlying the Basin is pumped directly from groundwater stored in the Basins aquifers. In 1945, the intrusion of seawater caused by declining groundwater levels due to over pumping threatened the quality and quantity of the groundwater supply. In response to the seawater intrusion problem, legal action was initiated to halt the pumping overdraft and prevent further damage to the Basin. In 1955, the Superior Court of Los Angeles County (Court) appointed the Department of Water Resources (DWR) as the Watermaster to administer an Interim Agreement. Subsequently, in 1961, the Court retained the DWR as the Watermaster of the final West Coast Basin Adjudication (Judgment).

The Judgment has been amended multiple times since its inception. Noticeably, when the Judgment was amended on December 5, 2014 (Amended Judgment), for the first time, the



Court allowed Parties to have direct input into how the Judgment is administered and enforced. Furthermore, the Amended Judgment confirmed the retirement of DWR as the Watermaster and established a new Watermaster structure.

The new Watermaster structure includes three separate constituent bodies serving different functions; 1) an Administrative Body, 2) a Water Rights Panel, and 3) a Storage Panel. The Administrative Body performs the Watermaster accounting and reporting functions. WRD was appointed by the Court to fulfill this role. The Water Rights Panel enforces issues related to the pumping rights within the adjudications and is composed of five Basin adjudicated rights holders. The Storage Panel is comprised of the Water Rights Panel and the WRD Board of Directors, which together approve certain groundwater storage efforts.

The Watermaster assists the Court in the administration and enforcement of the provisions of the Judgment. Among other duties, the Watermaster monitors groundwater levels, extractions, storage, and reports significant water-related events.

# Water Use

## A. Adjudicated Rights Extractions by Parties

The Judgment limits the amount of groundwater each Party with a water right may extract annually from the Basin. This limit is referred to as the “adjudicated right” or “AR”. The AR for each Party is listed in Table 1. Parties are required to report water extractions to the Administrative Body each month (or quarterly for small producers). Appendix A lists, by Party, the volume of groundwater extracted each month from each active well in the Basin for the 2019-2020 AY. Figure 1 illustrates the variation of groundwater production by three distinct production classifications: less than 500 acre-feet per year (afy), 500 to 2,000 afy, and more than 2,000 afy, during the 2019-2020 AY. In addition, Figure 2 shows monthly water production (excluding non-consumptive use) for the 2019-2020 AY totaling 27,603 acre-feet (af), which is a 2% increase from the previous AY.

To provide flexibility in regard to groundwater extractions, the Judgment contains provisions, such as “carryover,” which allows each Party to carry over into the succeeding administrative year 100% of their unused AR plus or minus any leases with flex, if any. However, the amount of available carryover is reduced by the amount of Stored Water held by the Party. Yet, such reduction will not cause the amount of carryover to be less than 20% of a Party’s total adjudicated rights (including leases with flex). This type of provision is in-place to meet unforeseen water demands.

## B. Groundwater Storage Activity by Parties

The Judgment permits Parties holding water rights to store water in the Basin for later recovery. Pursuant to Section V.4.(B) of the Judgment, parties can convert their carryover to storage upon payment of the Replenishment Assessment to WRD.

Table 2 describes storage accounting, specifically total carryover from the previous 2018-2019 AY, storage activity for the 2019-2020 AY (transfers, water put into storage, water extracted from storage, and balances), and total balance carryover into the 2020-2021 AY. Table 3 lists total quantities of water put into storage during the 2019-2020 AY. The total amount of water that was put into storage was 2,258.90 af, which is a 100% increase in comparison to the previous AY. There was no water extracted from storage during the 2019-2020 AY (Table 4).

The Judgment also provides for the transfer of stored water between Parties. However, there were no storage transfers in the 2019-2020 AY (Table 5).

Table 6 provides a historical storage summary from 2014-2015 to 2019-2020 AY for water put into storage, water extracted from storage, storage balance, and the available adjudicated storage capacity.

### C. Annual Extraction Limit and Over-extractions

Parties with water rights have an annual extraction limit, which is the maximum amount of groundwater that can be extracted in any one year, regardless of how many rights they have. In the West Coast Basin, Parties with normal carryover and/or storage rights have an annual extraction limit of up to 120% of the sum of their AR +/- leased water. For example, if a Party has an AR of 1,000 af, 400 af stored water rights, and leases an additional 200 af (for a total extraction right of 1,600 af), their annual extraction limit would be calculated as follows:  $(1,000 + 200) \times 1.2 = 1,440$  af. Conversely, if the Party leased out 200 af, their annual extraction limit would be  $(1,000 - 200) \times 1.2 = 960$  af. Under certain circumstances, a Party may be allowed an over-extraction in a greater amount; however, prior approval must be obtained from the West Coast Basin Storage Panel.

Parties with neither normal carryover nor storage rights can over-extract 10% of their AR +/- leased water or 2 af, whichever is greater. Any Party that exceeds this over-extraction without prior approval is in violation of the Judgment. Any over-extraction will be deducted from the responsible Party's rights in the subsequent AY.

During the 2019-2020 AY, two Parties had a combined cumulative over-extraction of 55.52 af. One Party overextracted within the provisions of the Judgment and the other is in violation of the Judgment. Table 7 lists over-extractions by both Parties for the 2019-2020 AY.

### D. Extractions of Contaminated Groundwater

A Party who is a water rights holder may petition the Administrative Body (WRD) for a Non-Consumptive Water Use Permit (NCWUP) as part of a project to remediate or ameliorate groundwater contamination. If the petition is granted, the Party may extract the groundwater without it counting against its production rights, so long as the conditions of the Judgment are met. A non-Party may extract contaminated groundwater for cleanup purposes by partnering with a Party who obtains the NCWUP and then assigns it to the non-Party. Table 8 lists current NCWUPs issued by WRD and the amounts of groundwater extracted under those permits.

In the 2019-2020 AY there were 469.69 af of non-consumptive water use extractions, which is a 22% decrease in extraction from the previous AY. Appendix A reports these extractions by well and month.

### E. Extractions by Non-Parties

In the 2019-2020 AY there were no extractions by non-Parties reported, not including NCWUPs (Table 9).

## **F. Extraction Exemptions**

The Court approved an amendment to the Judgment during the 2018-2019 AY, which adds Section V.15, which allows for the extraction of non-potable groundwater by agencies with no AR. However, extractions of groundwater are only permitted if all of the following criteria are satisfied:

1. Only groundwater containing at least 500 milligrams/liter of chloride, as measured at the influent to any facility used to treat such water, may be extracted;
2. Extractions must be done by a public agency with statutory authority to clean contaminated groundwater;
3. Extractions of such groundwater must provide a “Regional Benefit” (as defined in Section II.27. of the Judgment) to the Basin as a whole and not just to the extracting party;
4. All extractions pursuant to the new Paragraph V.15 are subject to the payment of WRD’s Replenishment Assessment.

In addition, all new projects seeking an extraction exemption must be reviewed (as set forth in Section V.13 of the Judgment) and approved by the Water Rights Panel and WRD in its capacity as the Administrative Body. The Water Rights Panel and WRD must ensure that the project is technically feasible and will not cause material physical harm (as defined in Section II.21 of the Judgment) to the Basin. In addition, all approved extraction exemption projects must provide annual reporting in response to the required criteria.

During the 2019-2020 AY, there were no extraction exemption requests submitted.

## **G. Adjudicated Rights Transfers**

Each year, ARs are transferred between Parties through leases (temporary transfers) and change of ownership (permanent transfers) transactions. Table 10 shows transfers of AR through leases, specifically the Parties involved, transaction type (leases with and without flex), amount, and recordation date. During the 2019-2020 AY there were five leases that totaled 3,473.50 af (all leases were with flex). Leases with flex transfer both the pumping right and associated carryover rights to the lessee for the term stated within the lease agreement.

In transferring water rights, Parties must specify (1) the type of right (i.e., adjudicated rights, normal carryover, or drought carryover), (2) the amount of right to the nearest 0.01 af, and (3) the period of the lease, if applicable. Moreover, all leases must be made on an AY basis and must be executed by the Parties and received by the Administrative Body no later than one month and 15 days following the end of the AY in which the lease is effective.

The permanent transfer of water rights must be documented accordingly. Specifically, when land is sold on which a water right has been developed, the Administrative Body must receive a copy of the transfer document if the water right is also transferred. Water rights do not automatically pass to the new landowner unless the transfer document specifies the transfer of water rights and the exact amount of the water right that was transferred with the land. Watermaster maintains a template for a Deed of Water Rights – Permanent Transfer transaction on its website to ensure the

information provided on the transfer document is sufficient. There were no permanent transfers in the 2019-2020 AY (Table 11).

There were 69 Parties and 56 rights holders to the Judgment in the 2019-2020 AY, which is unchanged from the previous AY. Appendix B shows the succession of ARs in the Basin and current Parties to the Judgment are listed in Appendix C.

## **H. Exchange Pool**

The Judgment authorizes an Exchange Pool to provide additional water rights to Parties without sufficient water. If a Party's estimated water requirement for the following fiscal year exceeds its total available water supply, that Party may purchase additional water from the Exchange Pool. There were no requests for Exchange Pool water during the 2019-2020 AY (Table 12).

## **I. Extraction Wells**

In the 2019-2020 AY, there were 72 reported extraction wells operating in the Basin, which is a decrease of 10 active wells from the previous AY. The locations of the extraction wells are shown on Figure 1 by three distinct production classifications. Furthermore, according to information provided to Watermaster, there were 3 new extraction wells completed (Table 13) and no extraction wells destroyed in 2019-2020 AY (Table 14).

## **J. Meter Testing Program**

Accurate measurement of groundwater extractions is essential for the successful management of groundwater in the Basin. Therefore, Watermaster requires an operative water meter to be installed at each extraction well. It is the responsibility of each Party to ensure that its meter and test facilities are installed properly and are maintained in good working condition. It is the goal of Watermaster to test the water meter at each active extraction well at least once every two years or when a Party requests a meter calibration. Watermaster tests meters by volumetric or pitot tube comparisons or other methods, as appropriate. Watermaster notifies a Party that it must repair or replace its meter when the meter registers beyond five percent accuracy. If the registration accuracy of the meter deviates by more than five percent, Watermaster may revise the well production amount.

The meter testing program is managed by the Water Rights Panel who has contracted with DWR. During the 2019-2020 AY, the DWR visited 20 Parties and performed 39 tests. Tests showed that seven meters did not pass, which means the meters were either more than five percent fast or slow. Please contact the Water Rights Panel for specific information regarding meter testing; contact information is available at [www.wrd.org/WBWRP](http://www.wrd.org/WBWRP).

This page was left intentionally blank.

# Water Supply

## A. Precipitation

Precipitation over the Basin has relatively minimal direct influence on the replenishment of the groundwater Basin. This is a result of the low soil permeability that characterizes much of the Basin and large impermeable surfaces (i.e. pavement and buildings). However, during years of high rainfall, increased runoff from the areas upstream of the Basin can result in increased replenishment to the Basin and decreased groundwater demand by the water users, which can result in lower rates of groundwater extraction from the Basin.

During the 2019-2020 AY, the following amounts of rainfall were measured at three precipitation stations:

- 13.19 inches at Los Angeles International Airport
- 14.22 inches at Long Beach Airport
- 14.64 inches at Torrance Airport

Figure 3 shows the location of the precipitation stations and other key facilities and Figure 4 shows the monthly average rainfall measured at all three stations. Based on the total rainfall measured at these stations, the mean precipitation over the West Coast Basin was 14.02 inches, which is 111% of the long-term mean of 12.63 inches (Figure 4). Although the region received above average rainfall, the mean precipitation for 2019-2020 AY compared to the previous AY decreased by 3.75 inches.

## B. Groundwater Recharge

Replenishment of the Basin occurs primarily by injection of imported and recycled water into the West Coast and Dominguez Gap Seawater intrusion barriers located along the coast, and underflow from the Central Basin to the east and Santa Monica Basin to the north. As mentioned above, minimal rainfall over the Basin infiltrates into deeper aquifers of the Basin.

Water spread in the Central Basin percolates into the aquifers and, eventually, some groundwater crosses the Newport-Inglewood Uplift to replenish the groundwater in the West Coast Basin. Although the recharge water is not directly applied to the West Coast Basin, this recharge process returns large quantities of water to the Basin by substantially increasing the natural subsurface flow from the Central Basin to the West Coast Basin. There was a decrease of 57% in “local runoff” when compared to the previous AY, which is credited to the average rainfall received compared to the previous wet year. Table 15 shows the sources and quantities of water replenished in the Montebello Forebay area of the Central Basin for the 2018-2019 AY and the 2019-2020 AY. Specifically, WRD purchased zero af of imported water for spreading, which is 5,340 af less than the previous AY. The completion of the ARC facility has allowed WRD to replace imported water with advanced treated recycled water for groundwater recharge in the Montebello Forebay of the Central Basin, which

provides subsurface recharge to the West Coast Basin.

Water injected in the seawater intrusion barrier projects also contributes significantly to the replenishment of the Basin (see Section I, Seawater Intrusion Barrier Projects).

### **C. In-Lieu Replenishment**

During the 1965-1966 water year, WRD, in cooperation with the MWD, began an in-lieu replenishment program, where discounted imported water was offered seasonally due to availability. WRD contracted with producers having access to supplemental imported water that could be used in lieu of extracting groundwater from the Basin to reduce overall pumping impacts. However, due to water shortages and other reasons, MWD discontinued their discounted seasonal imported water in 2011 and as a result, WRD generally suspended its in-lieu replenishment program except under special circumstances. There was no in-lieu recharge in the Basin in 2019-2020 AY (Table 16).

### **D. Imported Water**

Imported water has been the largest component of supply for the Basin since the mid-1950s. Water is imported from northern California via the State Water Project and the Colorado River and is made available to water users by MWD through its member agencies: City of Long Beach, West Coast Basin Municipal Water District, City of Torrance, and the City of Los Angeles. The City of Los Angeles also directly imports northern California water into the region. Table 17 lists imported water for direct use by sources of water, Party, and quantity (WRD replenishment water is not included in the table). During the 2019-2020 AY, a total of 133,075 af of water was imported.

### **E. Recycled Water**

Table 18 shows that 21,818 af of recycled water was used in the area overlying the Basin during the 2019-2020 AY, not including WRD replenishment water. This amount is 1,636 af or 6.98% less that was used in the previous AY.

### **F. Total Water Use**

Figure 5 shows the total water use in the Basin during the 2019-2020 AY, including extracted groundwater, imported water and recycled water for direct use.



## **G. Exported Water**

No groundwater was exported from the Basin. California Water Service Company exported purchased imported water from the Basin to portions of its service area in the Palos Verdes Hills.

## **H. Increased Extraction in the Basin for Certain Purveyors Serving Overlying Communities**

Per Section IV.K of the Central Basin Third Amended Judgment, “certain purveyors” are Parties to both the Central Basin Third Amended Judgment and West Coast Basin Judgment and serve communities overlying both the Central and West Coast Basins. These purveyors include the City of Los Angeles, Golden State Water Company, and California Water Service Company and are allowed to increase their extraction in the Central Basin beyond their Allowed Pumping Allocation, which is the amount of groundwater each Party may extract annually. However, the increased extraction is counted against their unused AR in the West Coast Basin. Increased extractions are limited to 5,000 af per AY per party.

In the 2019-2020 AY, the Golden State Water Company transferred 3,000 af of their rights from the West Coast Basin into the Central Basin. The 3,000 af was deducted from their unused West Coast Basin AR. This transfer of rights is reflected in Table 1.

## **I. Seawater Intrusion Barrier Projects**

The Los Angeles County Department of Public Works operates two seawater intrusion barrier projects, the West Coast Basin Barrier and the Dominguez Gap Barrier, within the Basin. The barriers are designed to prevent seawater intrusion into the freshwater aquifers of the Basin. Table 19 shows the quantities of imported and recycled water injected into the two barrier projects. In the 2019-2020 AY, 22,722 af of water were injected into these two barrier systems, which is a 15% increase from the previous AY. The location of the two barriers systems are illustrated in Figure 3.

## **J. Groundwater Levels**

Figure 3 shows the locations of the key wells located in the Basin. Figure 6 shows the water level elevations in the two key wells. More detailed information regarding groundwater levels in the Basin is provided in the WRD’s annual Engineering Survey and Report and Regional Groundwater Monitoring Report. These reports are available on WRD’s website.

# Watermaster Costs and Budget

To fund Watermaster activities, both the Administrative Body and the Water Rights Panel can levy an annual assessment on water rights holders under the terms of the Judgment. The Administrative Body charges a flat fee of twenty dollars (\$20) to each rights holder. In addition, the remaining amount of the Administrative Body budget is charged to rights holders based upon their proportional ownership of total AR. Per the Judgment, the annual assessment of the Water Rights Panel should not exceed one dollar (\$1.00) per af of AR. However, the Water Rights Panel voted to waive their assessment for the 2019-2020 AY due to current sufficient reserves to fund operations.

For 2019-2020 AY, the Watermaster budget for the Administrative Body was \$108,428 which is unchanged from the previous AY. A summary of the budget is provided in Table 20.

This page was left intentionally blank.

Table 1 - Water Rights Accounting (acre-feet)

Party	AR 2019-2020 <sup>1</sup>	Net Carryover <sup>2</sup> from 2018-2019	Leases <sup>3</sup>		Storage <sup>4</sup>	Increased Extractions <sup>5</sup>	Total Rights <sup>6</sup>	Amount Pumped	Balance <sup>7</sup>	Allowable carryover into 2020-2021		
			with Flex	w/o Flex						Drought <sup>8</sup>	Normal	Total
ABC Nursery, Inc.	24.10	20.22	0.00	0.00	0.00	0.00	44.32	19.00	25.32	0.00	24.10	24.10
Asahi Fancy Koi, Inc	2.00	34.20	0.00	0.00	0.00	0.00	36.20	0.00	36.20	32.20	2.00	34.20
Automation Industries, Inc	0.70	4.10	0.00	0.00	0.00	0.00	4.80	0.00	4.80	3.40	0.70	4.10
California Water Service Company (Hawthorne Lease)	0.00	1,882.00	1,882.00	0.00	0.00	0.00	3,764.00	636.91	3,127.09	0.00	1,882.00	1,882.00
California Water Service Company (Hermosa Redondo)	4,070.00	4,070.00	-140.00	0.00	0.00	0.00	8,000.00	15.51	7,984.49	0.00	3,930.00	3,930.00
California Water Service Company (Dominguez)	10,417.45	10,417.45	0.00	0.00	0.00	0.00	20,834.90	3,496.52	17,338.38	0.00	10,417.45	10,417.45
Carson-Harbor Village Mobile Home Park	7.00	7.00	0.00	0.00	0.00	0.00	14.00	0.00	14.00	0.00	7.00	7.00
Carson-Madrona Company	104.00	104.00	0.00	0.00	0.00	0.00	208.00	0.00	208.00	0.00	104.00	104.00
CBS, Inc.	9.50	9.50	0.00	0.00	0.00	0.00	19.00	0.00	19.00	0.00	9.50	9.50
Century Builders	4.70	4.70	0.00	0.00	0.00	0.00	9.40	0.00	9.40	0.00	4.70	4.70
Chandler Palos Verdes Sand & Gravel Company	4.20	4.20	0.00	0.00	0.00	0.00	8.40	0.00	8.40	0.00	4.20	4.20
Chevron USA Inc.	4,601.30	4,601.30	0.00	0.00	0.00	0.00	9,202.60	0.00	9,202.60	0.00	4,601.30	4,601.30
Coastline Church of Christ	0.70	4.10	0.00	0.00	0.00	0.00	4.80	0.00	4.80	3.40	0.70	4.10
Curtis, Owen W	0.36	3.08	0.00	0.00	0.00	0.00	3.44	0.00	3.44	2.72	0.36	3.08
Delaney, Golda Estate of	4.10	14.30	0.00	0.00	0.00	0.00	18.40	0.00	18.40	10.20	4.10	14.30
Eco Services Operations, LLC	521.00	262.07	0.00	0.00	0.00	0.00	783.07	444.75	338.32	0.00	338.32	338.32
El Segundo City of	953.00	953.00	0.00	0.00	0.00	0.00	1,906.00	0.00	1,906.00	0.00	953.00	953.00
Engelsma, Susan Trust	12.10	12.10	0.00	0.00	0.00	0.00	24.20	0.00	24.20	0.00	12.10	12.10
Evergreen America Corporation	5.40	5.40	0.00	0.00	0.00	0.00	10.80	0.00	10.80	0.00	5.40	5.40
Fujimoto, SR. & St & JK	20.00	32.38	0.00	0.00	0.00	0.00	52.28	0.00	52.28	12.28	20.00	32.28
Gillingham, Florence R, et al	2.40	2.40	0.00	0.00	0.00	0.00	4.80	0.00	4.80	0.00	2.40	2.40
Golden State Water Company	7,502.24	4,205.63	0.00	0.00	3,300.00	-3,000.00	12,007.87	3,527.26	8,480.61	3.39	1,202.24	1,205.63
Hawthorne, City of	1,882.00	0.00	-1,882.00	0.00	0.00	0.00	0.00	0.00	0.00	0.00	0.00	0.00
Hillside Memorial Park	104.10	-0.75	0.00	0.00	0.00	0.00	103.35	95.02	8.33	0.00	8.33	8.33
Hollywood Park Land Company, LLC	282.00	0.00	-282.00	0.00	0.00	0.00	0.00	0.00	0.00	0.00	0.00	0.00
Honeywell International, Inc.	22.50	22.50	0.00	0.00	0.00	0.00	45.00	0.00	45.00	0.00	22.50	22.50
Honold, Kristin Brandsma	11.80	11.80	0.00	0.00	0.00	0.00	23.60	0.00	23.60	0.00	11.80	11.80
Inglewood, City of	4,449.89	4,683.89	282.00	0.00	0.00	0.00	9,415.78	3,383.33	6,032.45	0.00	4,731.89	4,731.89
Inglewood Park Cemetery	0.00	55.00	0.00	0.00	0.00	0.00	55.00	0.00	55.00	35.00	0.00	35.00
Kinder Morgan Liquids Terminals LLC	167.00	167.00	0.00	0.00	0.00	0.00	334.00	34.00	300.00	0.00	167.00	167.00
Leuzinger, Emma L Estate of	1.40	5.90	0.00	0.00	0.00	0.00	7.30	0.00	7.30	4.50	1.40	5.90
Lomita, City of	1,352.00	1,052.00	-150.00	0.00	0.00	0.00	2,254.00	2.00	2,252.00	0.00	1,202.00	1,202.00
Long Beach, City of	0.70	0.70	0.00	0.00	0.00	0.00	1.40	0.00	1.40	0.00	0.70	0.70
Lopes, Frank	3.70	13.10	0.00	0.00	0.00	0.00	16.80	0.00	16.80	9.40	3.70	13.10
Los Angeles County Department of Parks & Recreation <sup>11</sup>	363.70	-34.53	0.00	0.00	0.00	0.00	329.17	376.70	-47.53	0.00	-47.53	-47.53
Los Angeles County Sanitation Districts-JWPCP	102.00	102.00	0.00	0.00	0.00	0.00	204.00	0.02	203.98	0.00	102.00	102.00
Los Angeles, City of Dept of Water and Power	1,503.00	1,503.00	0.00	0.00	0.00	0.00	3,006.00	0.00	3,006.00	0.00	1,503.00	1,503.00
Loyola Marymount University	48.10	48.10	0.00	0.00	0.00	0.00	96.20	0.00	96.20	0.00	48.10	48.10
Manhattan Beach, City of <sup>9</sup>	1,131.20	0.00	0.00	0.00	1,131.20	0.00	2,262.40	158.38	2,104.02	0.00	226.24	226.24
McDonnell Douglas Corp.	1.70	1.70	0.00	0.00	0.00	0.00	3.40	0.00	3.40	0.00	1.70	1.70
Montrose Chemical Corporation of California	1.20	1.20	0.00	0.00	0.00	0.00	2.40	0.00	2.40	0.00	1.20	1.20
Mori, Roy H and Kenji	3.60	12.80	0.00	0.00	0.00	0.00	16.40	0.00	16.40	9.20	3.60	12.80
Northrop Corporation	38.15	38.15	0.00	0.00	0.00	0.00	76.30	0.00	76.30	0.00	38.15	38.15

Table 1 - Water Rights Accounting Continued

Party	AR 2019-2020 <sup>1</sup>	Net Carryover <sup>2</sup> from 2018-2019	Leases <sup>3</sup>		Storage <sup>4</sup>	Increased Extractions <sup>5</sup>	Total Rights <sup>6</sup>	Amount Pumped	Balance <sup>7</sup>	Allowable carryover into 2020-2021		
			with Flex	w/o Flex						Drought <sup>8</sup>	Normal	Total
Nozaki, Sumikichi	7.00	7.00	0.00	0.00	0.00	0.00	14.00	0.00	14.00	0.00	7.00	7.00
Pacific Crest Cemetery Company <sup>11</sup>	39.40	-122.00	140.00	0.00	0.00	0.00	57.40	65.39	-7.99	0.00	-7.99	-7.99
Palos Verdes Begonia Farm	0.00	7.40	0.00	0.00	0.00	0.00	7.40	0.00	7.40	7.40	0.00	7.40
Phillips 66 Company	6,170.00	6,957.78	0.00	0.00	0.00	0.00	13,127.78	4,543.42	8,584.36	787.78	6,170.00	6,957.78
Rehor, Josephine P	2.20	2.20	0.00	0.00	0.00	0.00	4.40	0.00	4.40	0.00	2.20	2.20
Rolling Hills Country Club	290.00	290.00	0.00	0.00	0.00	0.00	580.00	346.00	234.00	0.00	234.00	234.00
Roman Catholic Archbishop of Los Angeles	72.30	225.98	150.00	0.00	0.00	0.00	448.28	291.57	156.71	0.00	156.71	156.71
Shell Oil Company	1,019.50	0.08	-1,019.50	0.00	0.00	0.00	0.08	0.00	0.08	0.00	0.00	0.00
Southern California Edison Co.	57.10	63.32	0.00	0.00	0.00	0.00	120.42	25.20	95.22	6.22	57.10	63.32
Tesoro Refining & Marketing Co., LLC	8,741.00	9,760.50	1,019.50	0.00	0.00	0.00	19,521.00	5,188.74	15,228.56	0.00	9,760.50	9,760.50
Torrance Refining & Marketing Company	2,596.40	2,626.83	0.00	0.00	0.00	0.00	5,223.23	661.03	4,562.20	30.43	2,596.40	2,626.83
Torrance, City of <sup>10</sup>	5,638.86	0.07	0.00	0.00	9,021.80	0.00	14,660.73	4,292.44	10,368.29	0.00	1,127.77	1,127.77
Vukelich, Mike Jr. <sup>11</sup>	10.00	-51.08	0.00	0.00	0.00	0.00	-41.08	0.00	-41.08	0.00	-41.08	-41.08
Watson Land Company	80.20	80.20	0.00	0.00	0.00	0.00	160.40	0.00	160.40	0.00	80.20	80.20
Watt Industrial Property	0.10	0.10	0.00	0.00	0.00	0.00	0.20	0.00	0.20	0.00	0.10	0.10
Wiseburn School District	8.20	8.20	0.00	0.00	0.00	0.00	16.40	0.00	16.40	0.00	8.20	8.20
<b>TOTAL:</b>	<b>64,468.25</b>	<b>54,193.27</b>	<b>0.00</b>	<b>0.00</b>	<b>13,453.00</b>	<b>-3,000.00</b>	<b>129,114.42</b>	<b>27,603.19</b>	<b>102,407.53</b>	<b>957.52</b>	<b>51,702.46</b>	<b>52,659.98</b>

<sup>1</sup> AR - Adjudicated Rights.

<sup>2</sup> Net Carryover is the sum of all carryover from the previous year less the amount of carryover conversion for the current year.

<sup>3</sup> See Table 10 for information concerning leases. Lease with flex includes carryover provisions.

<sup>4</sup> Storage includes Carryover Conversion for Administrative Year 2019-20.

<sup>5</sup> Increased Extraction: Section IV(K) of the Central Basin Judgment permits increased extraction rights through use of up to 5,000 AF of certain parties' West Basin Rights in the Central Basin.

The aforementioned parties include City of Los Angeles, Golden State Water Company, and California Water Service Company

<sup>6</sup> Total Extraction Right = Adjudicated Rights + Net Carryover + Leases + Storage + Increased Extraction.

<sup>7</sup> Balance = Total Extraction Right - Amount Pumped

<sup>8</sup> Drought = drought carryover created in 1991.

<sup>9</sup> 2018-2019 net carryover reduced by 1,131.20 a.f. due to carryover conversion into storage for 2019-2020.

<sup>10</sup> 2018-2019 net carryover reduced by 1,127.70 a.f. due to carryover conversion into storage for 2019-2020.

<sup>11</sup> Negative Normal Carryover will be deducted from the subsequent year's AR.

Table 2 - Storage Accounting

Party	Carryover from 2018-2019		2019-2020 Storage Activity									
	ISA <sup>1</sup>	CSP <sup>2</sup>	Transfers		Water put into Storage		Water Extracted From Storage		Balance			
			ISA	CSP	ISA	CSP	ISA	CSP	ISA	CSP	Total	
Golden State Water Company	3,000.90	299.10	-	-	-	-	-	-	-	3,000.90	299.10	3,300.00
Manhattan Beach, City of	-	-	-	-	452.48	678.72	-	-	-	452.48	678.72	1,131.20
Torrance, City of	2,255.54	5,638.56	-	-	-	1,127.70	-	-	-	2,255.54	6,766.26	9,021.80
<b>West Coast Basin Total</b>	<b>5,256.44</b>	<b>5,937.66</b>	<b>0.00</b>	<b>0.00</b>	<b>452.48</b>	<b>1,806.42</b>	<b>0.00</b>	<b>0.00</b>	<b>0.00</b>	<b>5,708.92</b>	<b>7,744.08</b>	<b>13,453.00</b>

<sup>1</sup> Individual Storage Account.

<sup>2</sup> Community Storage Pool.

Table 3 - Water Put Into Storage

Party	Quantity	Storage Account <sup>1</sup>	Storage Method <sup>2</sup>	Date
Manhattan Beach, City of	1,127.70	CSP	CC	8/13/20
Torrance, City of	452.48	ISA	CC	7/24/20
Torrance, City of	678.72	CSP	CC	7/24/20
<b>Total:</b>	<b>2,258.90</b>			

Table 4 - Water Extracted From Storage

Party	Quantity	Storage Account	Date
No stored water was extracted in the 2019 - 2020 AY			

Table 5 - Storage Transfers

Party	Quantity	Storage Account	Date
No stored water was transferred in the 2019 - 2020 AY			

<sup>1</sup> CSP = Community Storage Pool. ISA = Individual Storage Account.

<sup>2</sup> CC = Carryover Conversion.

Table 6 - Historical Storage Summary

Fiscal Year	Water Put Into Storage			Water Extracted From Storage			Storage Balance			Available Adjudicated Storage Capacity		
	ISA	CSP	Total	ISA	CSP	Total	ISA	CSP	Total	ISA	CSP	Total
2014-15	1,097.77	0.00	1,097.77	0.00	0.00	0.00	1,097.77	0.00	1,097.77	24,702.23	35,500.00	60,202.23
2015-16	1,157.77	1,917.16	3,074.93	0.00	0.00	0.00	4,172.70	1,917.16	6,089.86	23,544.46	33,582.84	57,127.30
2016-17	3,000.90	1,765.10	4,766.00	0.00	0.00	0.00	5,256.44	3,682.26	8,938.70	20,543.56	31,817.74	52,361.30
2017-18	0.00	1,127.00	1,127.00	0.00	0.00	0.00	5,256.44	4,809.96	10,066.40	20,543.56	30,690.04	51,233.60
2018-19	0.00	1,127.00	1,127.00	0.00	0.00	0.00	5,256.44	5,937.66	11,194.10	20,543.56	29,562.34	50,105.90
2019-20	452.48	1,806.42	2,258.90	0.00	0.00	0.00	5,708.92	7,704.08	13,453.00	20,091.08	27,755.92	47,847.00

Table 7. Over-extractions

Party	Adjudicated Right	Carryover and/or Stored Water	Total Rights	Amount Pumped	Over-extraction <sup>1</sup>	Allowable Over-extraction <sup>2</sup>	Judgment Violation?
LA Co. Dept. of Parks & Rec	363.70	No	329.17	376.70	47.53	36.37	Yes
Pacific Crest Cemetery	39.40	No	57.40	65.39	7.99	17.94	No
<b>Total</b>					<b>55.52</b>		

<sup>1</sup> Over-extraction = Amount Pumped - Total Rights; any over-extraction will be deducted from the following year's Total Rights.

<sup>2</sup> If the Party has carryover or stored water, they are allowed to over-extract up to 120% of AR +/- leases and not be in violation of the Judgment; if they do not have carryover and/or stored water, they are allowed to over-extract 10% or 2 af of AR +/- leases, whichever is greater.



Table 8 - Non-Consumptive Water Use Permits

Party	Issued	Expires	2018-2019 Extraction <sup>1</sup> (acre-feet)
Montrose Chemical Corporation	November 7, 2012	October 31, 2063	-1.04
West Basin Brewer Desalter	July 22, 1992	June 30, 2017	305.90
Shell Oil <sup>2</sup>	December 28, 2011		164.83
<b>Total</b>			<b>469.69</b>

Table 9. Extractions by Non-Parties

Non-party	Amount Pumped (acre-feet)
There were no extractions reported by non-parties in the 2019-2020 AY	
<b>Total</b>	<b>0.00</b>

<sup>1</sup> Negative numbers indicate net re-injection of treated water.

<sup>2</sup> Permit in process of renewal.

Table 10 - Leases (acre-feet)

Party	Transaction Type	Amount	Recordation Date	Party	Net Amount
California Water Service Co. (Hawthorne)	Lease with flex <sup>1</sup>	1,882.00	2/1/13 FROM	Hawthorne, City of	1,882.00
California Water Service Co. (Hermosa Redondo)	Lease with flex	-140.00	8/6/20 TO	Pacific Crest Cemetery Company	-140.00
Hawthorne, City of	Lease with flex	-1,882.00	2/1/13 TO	California Water Service Co. (Hawthorne)	-1,882.00
Hollywood Park Land Company, LLC	Lease with flex	-282.00	4/12/19 TO	Inglewood, City of	-282.00
Inglewood, City of	Lease with flex	282.00	4/12/19 FROM	Hollywood Park Land Company, LLC	282.00
Lomita, City of	Lease with flex	-150.00	6/17/20 TO	Roman Catholic Archbishop of Los Angeles	-150.00
Pacific Crest Cemetery Company	Lease with flex	140.00	8/6/20 FROM	California Water Service (Hermosa Redondo)	140.00
Roman Catholic Archbishop of Los Angeles	Lease with flex	150.00	6/17/20 FROM	Lomita, City of	150.00
Shell Oil Company	Lease with flex	-1,019.50	9/21/17 TO	Tesoro Refining & Marketing Company	-1,019.50
Tesoro Refining & Marketing Company	Lease with flex	1,019.50	9/21/17 TO	Shell Oil Company	1,019.50
<b>Total Leased Volume</b>					<b>3,473.50</b>

<sup>1</sup> Leases with flexibility or "flex" transfers both the pumping right and associated carryover rights to the lessee, meaning if the party who leases in the rights "with flex" is allowed to carryover into the next AY any unused rights from the lease under the terms of the Judgment.

Table 11 - Permanent Transfers (acre-feet)

Party	Transaction Type	Amount	Recordation Date	Party	Net Amount
<p>There were no permanent transfers in the West Coast Basin in the 2019-2020 AY</p>					
<b>Total Permanent Transfers</b>					<b>0.00</b>

Table 12 - Exchange Pool

Party	Adjudicated Rights	Required Offer	Actual Offer	Amount Sold	Payment due Exchanger
There were no requests for the Exchange Pool in the 2019-2020 AY					

Table 13 - Extraction Wells Completed

Party	Recordation No.	State Well No.	Owner Designation
ConocoPhillips Company	1950635	4S/13W-21R11S	6
Tesoro Refining & Marketing Co.	1950636	4S/13W-21H08S	Well 16
Torrance Refining Company	1950637	4S/14W-02P01S	EW-02R

Table 14 - Extraction Wells Destroyed

Party	Recordation No.	State Well No.	Owner Designation
There were no extraction wells reported destroyed in 2019-2020			

Table 15 - Replenishment Operations

Water spread in the Montebello Forebay area of the Central Basin provides subsurface recharge to the West Coast Basin.

Source of Water	Quantity (acre-feet)	
	2018-2019	2019-2020
<b>Local Runoff</b>	81,531	35,447
<b>Recycled water:</b>		
Whittier Narrows Water Reclamation Plant	6,665	8,413
San Jose Water Reclamation Plant	37,818	36,391
Pomona Water Reclamation Plant	3,447	3,409
<b>MWD untreated Tier 1 water purchased by WRD</b>	5,340	0
<b>Make-up water from Upper San Gabriel Basin</b>	0	0
<b>Total</b>	<b>134,801</b>	<b>83,660</b>

Table 16 - WRD In-Lieu Recharge

Party	In-Lieu Amount (acre-feet)
There was no in-lieu recharge in the 2019-2020 AY	
<b>Total</b>	<b>0.00</b>

Table 17 - Imported Water Use

Source of Water	Party/Entity	Quantity (acre-feet)	
		2018-2019	2019-2020
Colorado River and State Water Project	Long Beach, City of	20,312 <sup>2</sup>	23,646 <sup>2</sup>
Colorado River and State Water Project	<b>West Coast Basin Municipal Water District:</b>		
	California American Water Company	1,426	1,696
	California Water Service Company <sup>1</sup>	10,720	10,697
	California Water Service Company (Dominguez)	23,969	23,436
	California Water Service Company (Hawthorne Lease)	2,978	3,202
	El Segundo, City of	7,392	6,302
	Golden State Water Company	23,759	18,495
	Inglewood, City of	7,563	5,520
	Lomita, City of	1,520	2,004
	Manhattan Beach, City of	4,563	4,603
	<b>West Basin MWD Subtotal</b>	<b>83,890</b>	<b>75,955</b>
Colorado River and State Water Project	Torrance, City of	14,176	4,292
Owens River-Mono Basin, Colorado River, and State Water Project	Los Angeles, City of	28,138	28,060
Central Basin Groundwater	California-American Water Company	1,481	1,122
<b>Total Imported Water</b>		<b>147,997</b>	<b>133,075</b>

<sup>1</sup> Excludes acre-feet of imported water that was exported to Palos Verdes.

<sup>2</sup> This value is the same as the imported water use in the Central Basin.

Table 18 - Recycled Water Use

Source of Water	Party/Entity	Quantity (acre-feet)	
		2018-2019	2019-2020
<b>West Basin Municipal Water District:</b>	California Water Service Company	226	215
	California Water Service Company (Hawthorne Lease)	84	92
	California Water Service Company (Dominguez)	5,361	4,667
	El Segundo, City of	9,686	8,651
	Golden State Water Company	452	385
	Inglewood, City of	698	685
	Los Angeles, City of	829	1,433
	Manhattan Beach, City of	231	266
	Torrance, City of	5,887	5,424
<b>Total Recycled Water</b>		<b>23,454</b>	<b>21,818</b>

Table 19 - Seawater Intrusion Barrier Project Operations

Provisional data provided by the Los Angeles County Department of Public Works.

Barrier Project	Quantity (acre-feet)	
	2018-2019	2019-2020
West Coast Basin Barrier		
Imported water injection	3,190	2,270
Recycled water injection	9,738	13,084
Dominguez Gap Barrier		
Imported water injection	5,484	4,185
Recycled water injection	1,290	3,183
<b>Total</b>	<b>19,702</b>	<b>22,722</b>

Table 20 - Apportionment of Budget Among Rights Holders (2019-2020)

Party	Adjudicated Rights	Water Rights Panel	Administrative Body	Total Amount Billed
A B C Nursery Inc.	24.10		\$60.11	\$60.11
Asahi Fancy Koi Inc.	2.00		\$23.33	\$23.33
Automation Industries Inc.	0.70		\$21.17	\$21.17
California Water Service Company - Dominquez	10,417.45		\$17,359.94	\$17,359.94
California Water Service Company - Hermosa / Redondo	4,070.00		\$6,794.55	\$6,794.55
Carson Harbor Village Mobile Home Park	7.00		\$31.65	\$31.65
Carson-Madrona Company #3 Del Amo	104.00		\$193.11	\$193.11
CBS Inc.	9.50		\$35.81	\$35.81
Century Builders	4.70		\$27.82	\$27.82
Chandler Palos Verdes Sand & Gravel Company	4.20		\$26.99	\$26.99
Chevron U.S.A. Inc.	4,601.30		\$7,678.91	\$7,678.91
Coastline Church of Christ	0.70		\$21.17	\$21.17
Curtis, Owen	0.36		\$20.60	\$20.60
Eco Services Operations LLC	521.00		\$887.21	\$887.21
El Segundo, City of	953.00		\$1,606.28	\$1,606.28
Estate of Emma L. Leuzinger	1.40		\$22.33	\$22.33
Estate of Golda Delaney	4.10		\$26.82	\$26.82
Evergreen America Corporation	5.40		\$28.99	\$28.99
Frank Lopes	3.70		\$26.16	\$26.16
Fujimoto, S R & S T & J K	20.00		\$53.29	\$53.29
Gillingham, Florence R, et al	2.40		\$23.99	\$23.99
Golden State Water Company	7,502.24		\$12,507.55	\$12,507.55
Hawthorne, City of (California Water Service Co.)	1,882.00		\$3,152.61	\$3,152.61
Hillside Memorial Park	104.10		\$193.28	\$193.28
Hollywood Park Land Company, LLC	282.00		\$489.39	\$489.39
Honeywell International Inc.	22.50		\$57.45	\$57.45
Honold, Kristin Brandsma	11.80		\$39.64	\$39.64
Inglewood, City of	4,449.89		\$7,426.88	\$7,426.88
Josephine P. Rehor	2.20		\$23.66	\$23.66
Kinder Morgan Liquids Terminals, LLC	167.00		\$297.97	\$297.97
Lomita Water System, City of	1,352.00		\$2,270.42	\$2,270.42
Long Beach, City of	0.70		\$21.17	\$21.17
Los Angeles County Recreation Facilities	363.70		\$625.38	\$625.38
Los Angeles County Sanitation District No. 2	102.00		\$189.78	\$189.78

Table 20 - Apportionment of Budget Among Rights Holders (Continued)

Party	Adjudicated Rights	Water Rights Panel	Administrative Body	Total Amount Billed
Los Angeles Department of Water and Power, City of	1,503.00		\$2,521.76	\$2,521.76
Loyola Marymount University	48.10		\$100.06	\$100.06
Manhattan Beach, City of	1,131.20		\$1,902.89	\$1,902.89
McDonnell Douglas Corporation	1.70		\$22.83	\$22.83
Montrose Chemical Corporation of California	1.20		\$22.00	\$22.00
Northrop Corporation	38.15		\$83.50	\$83.50
Nozaki, Sumikichi	7.00		\$31.65	\$31.65
Ocean Industries, Inc.	0.10		\$20.17	\$20.17
Pacific Crest Cemetery Company	39.40		\$85.58	\$85.58
Phillips 66 Company	6,170.00		\$10,290.02	\$10,290.02
Rolling Hills Country Club	290.00		\$502.71	\$502.71
Roman Catholic Archbishop of Los Angeles	72.30		\$140.34	\$140.34
Roy H. and Kenji Mori	3.60		\$25.99	\$25.99
Shell Oil Company	1,019.50		\$1,716.97	\$1,716.97
Southern California Edison Company	57.10		\$115.04	\$115.04
Susan Engelsma Trust	12.10		\$40.14	\$40.14
Tesoro Refining & Marketing Company LLC	8,741.00		\$14,569.48	\$14,569.48
Torrance Refining Company	2,596.40		\$4,341.73	\$4,341.73
Torrance, City of	5,638.86		\$9,405.93	\$9,405.93
Vukelich, Mike, Jr.	10.00		\$36.65	\$36.65
Watson Land Company	80.20		\$153.49	\$153.49
Wiseburn School District	8.20		\$33.65	\$33.65
<b>Total</b>	<b>64,468.25</b>		<b>\$108,428</b>	<b>\$108,428</b>



Figure 1 - West Coast Basin  
(showing groundwater production)

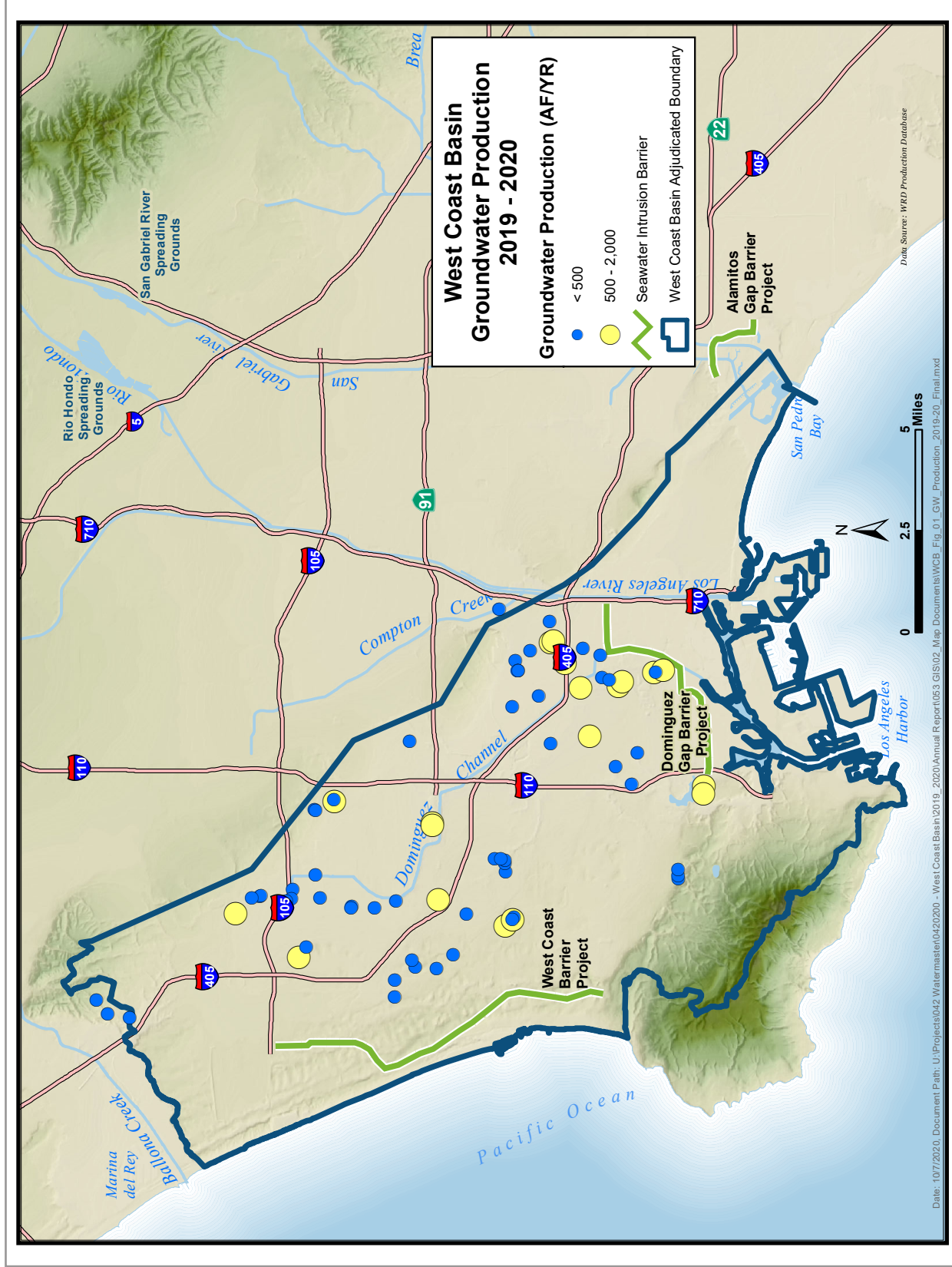


Figure 2 - Monthly Water Production  
(excludes non-consumptive use)

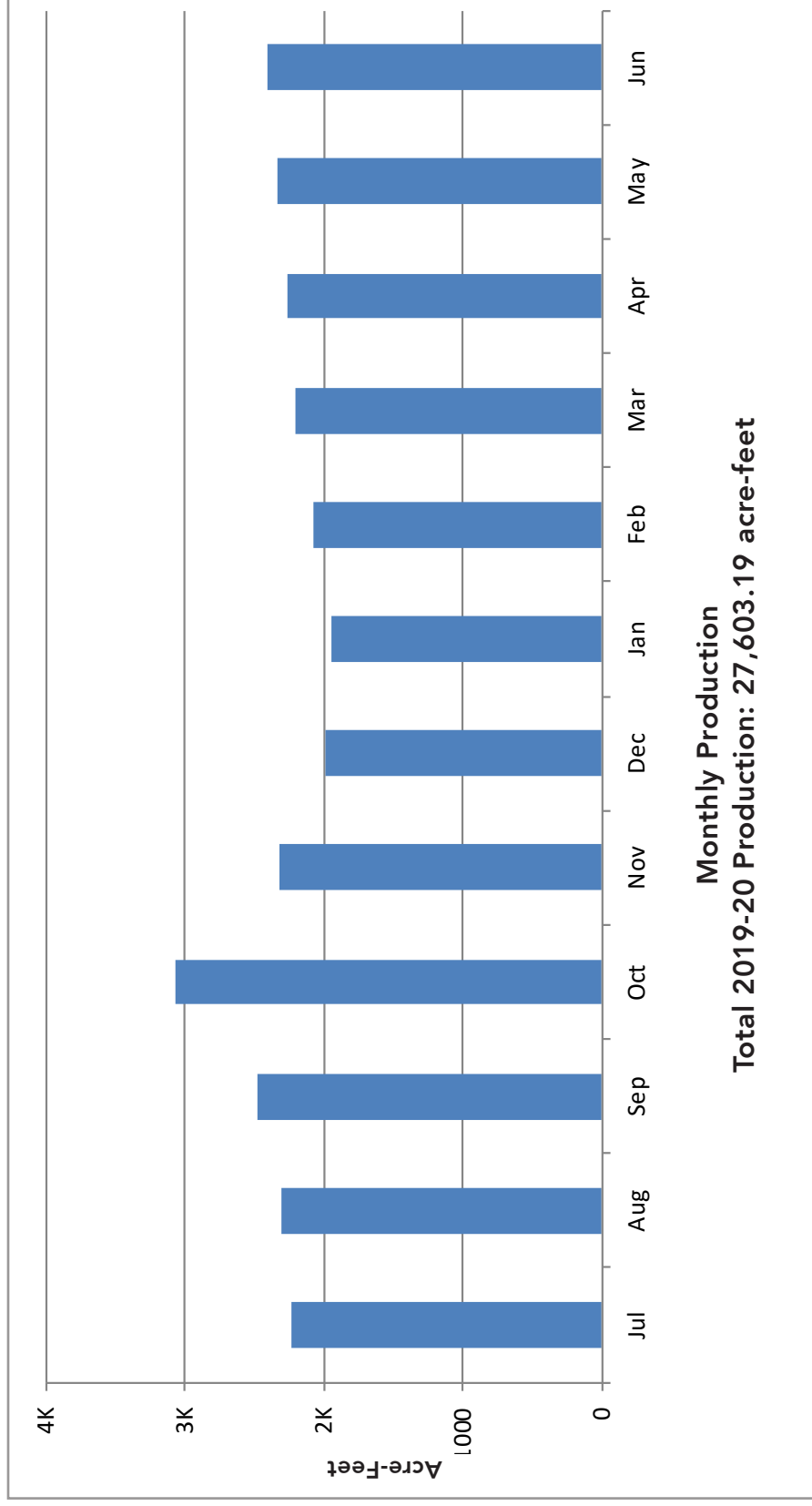
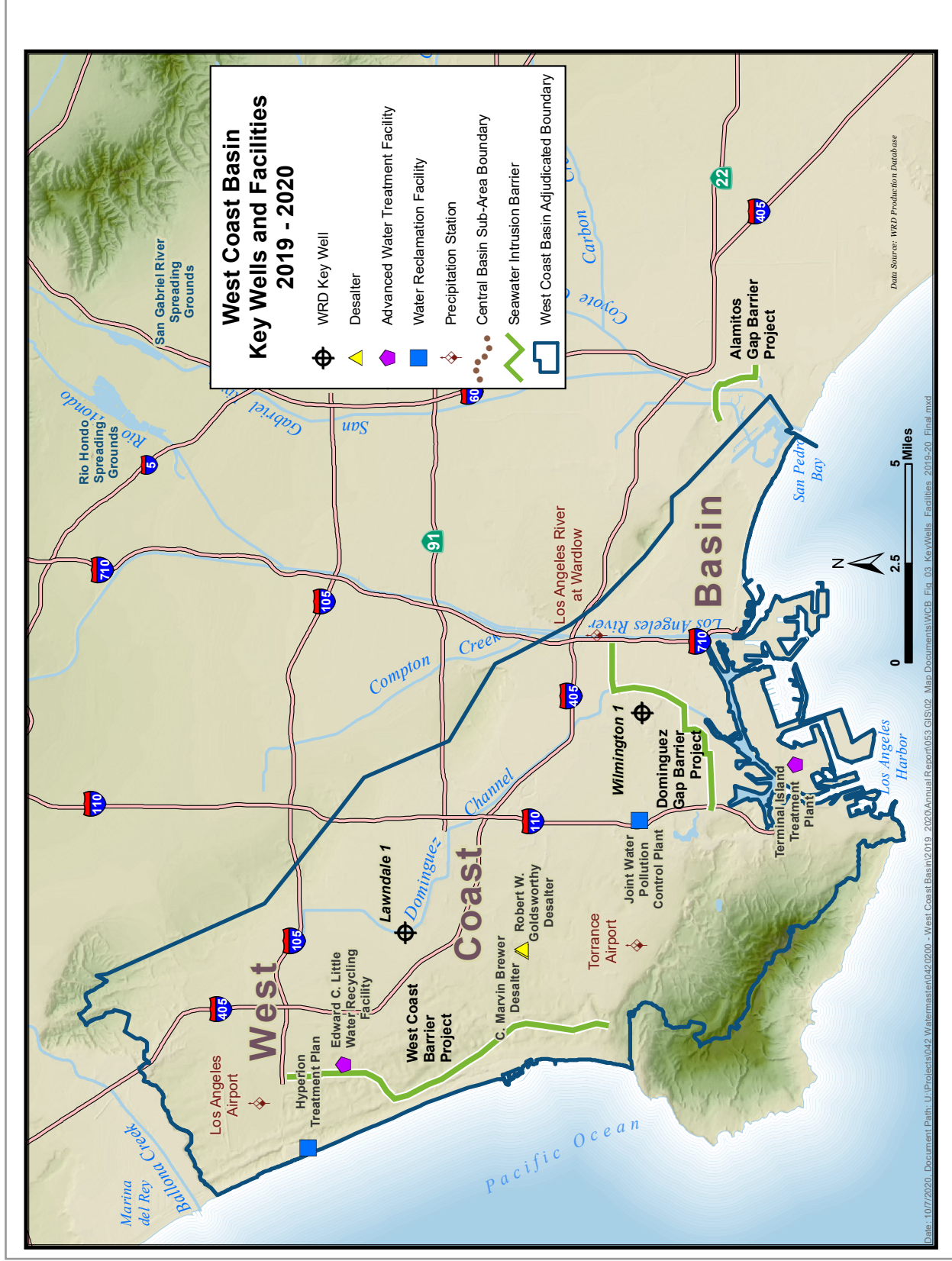


Figure 3 - West Coast Basin  
(showing key wells and facilities)



### Figure 4 - Monthly Rainfall

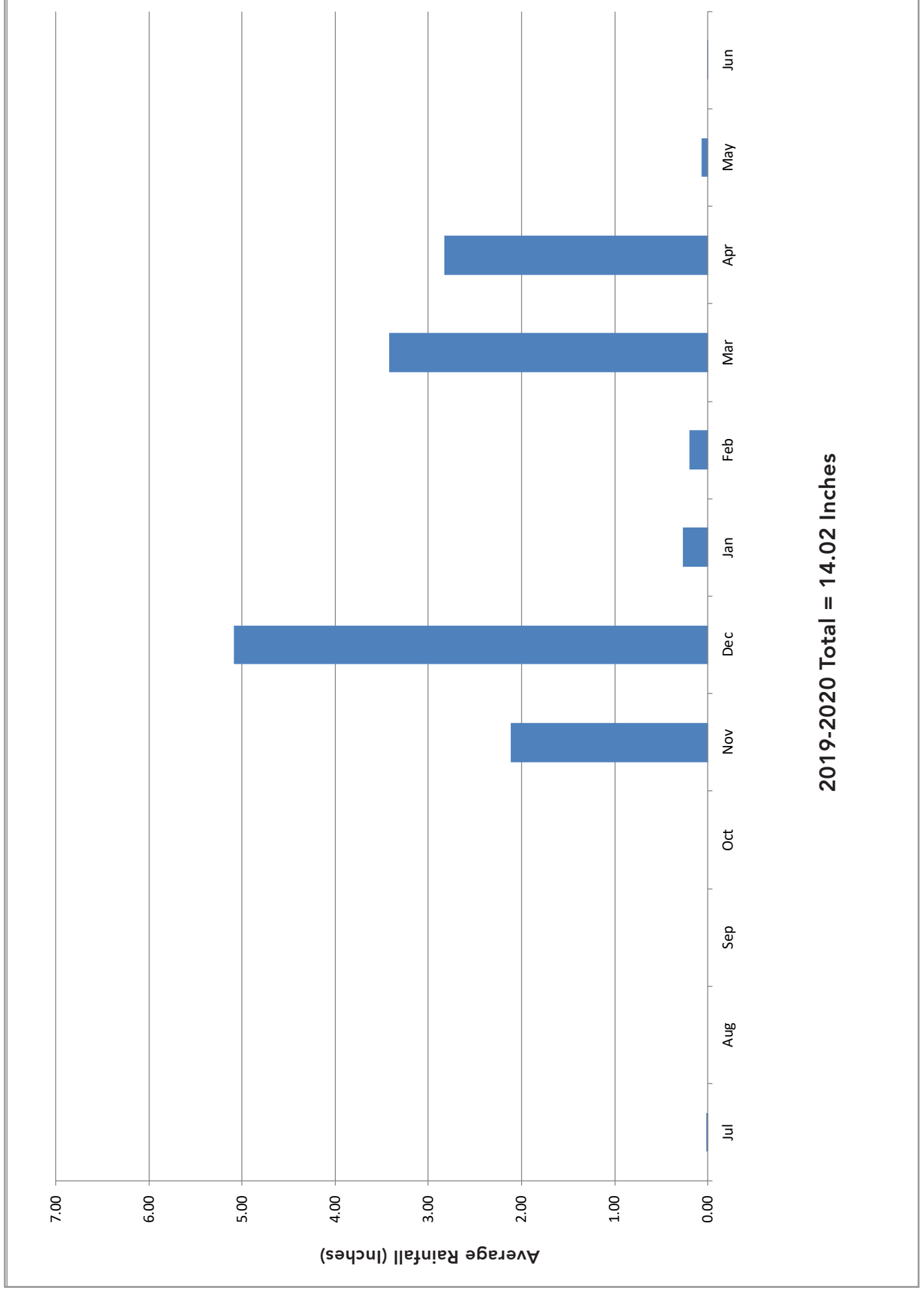


Figure 5 - Total Water Use

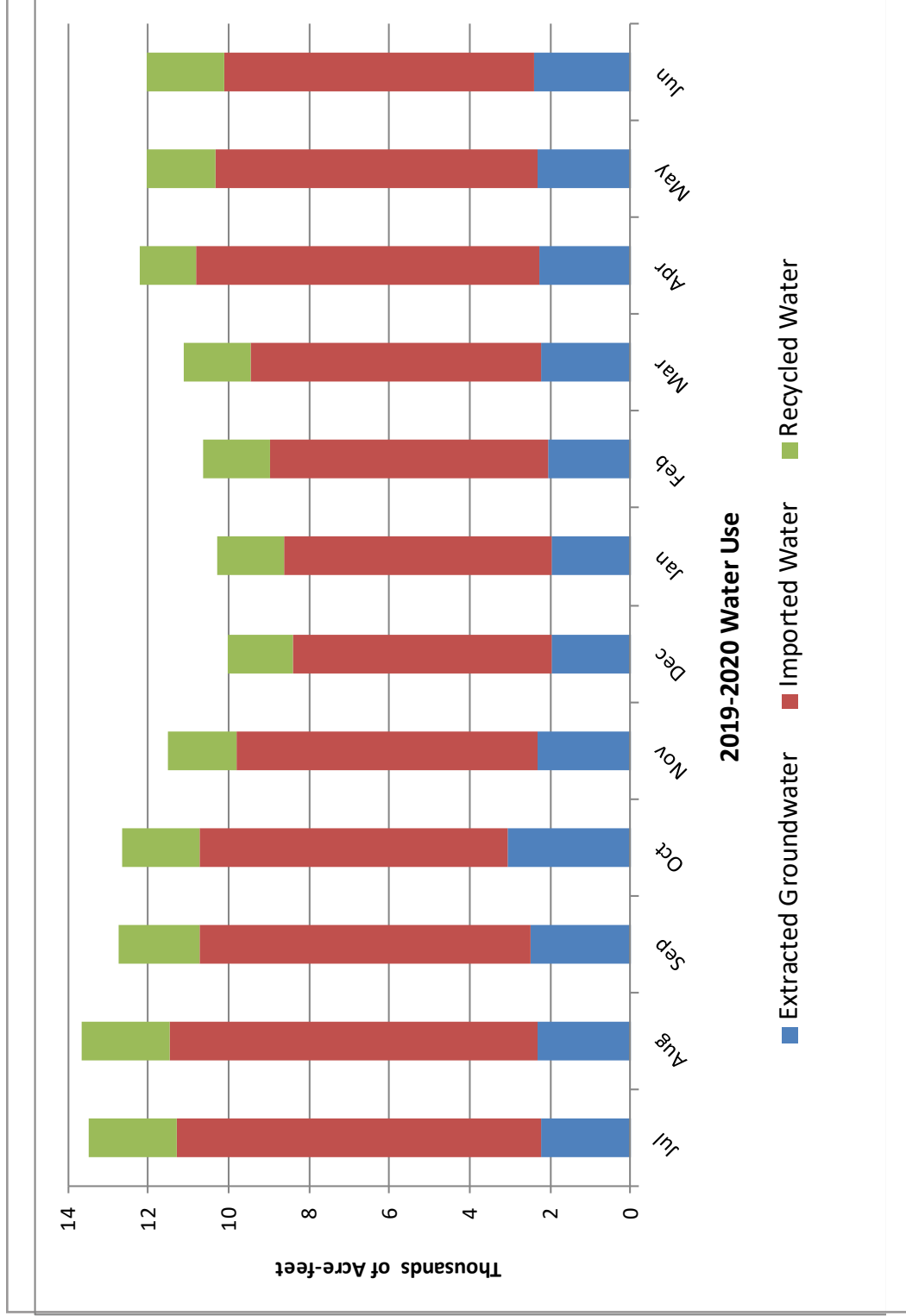
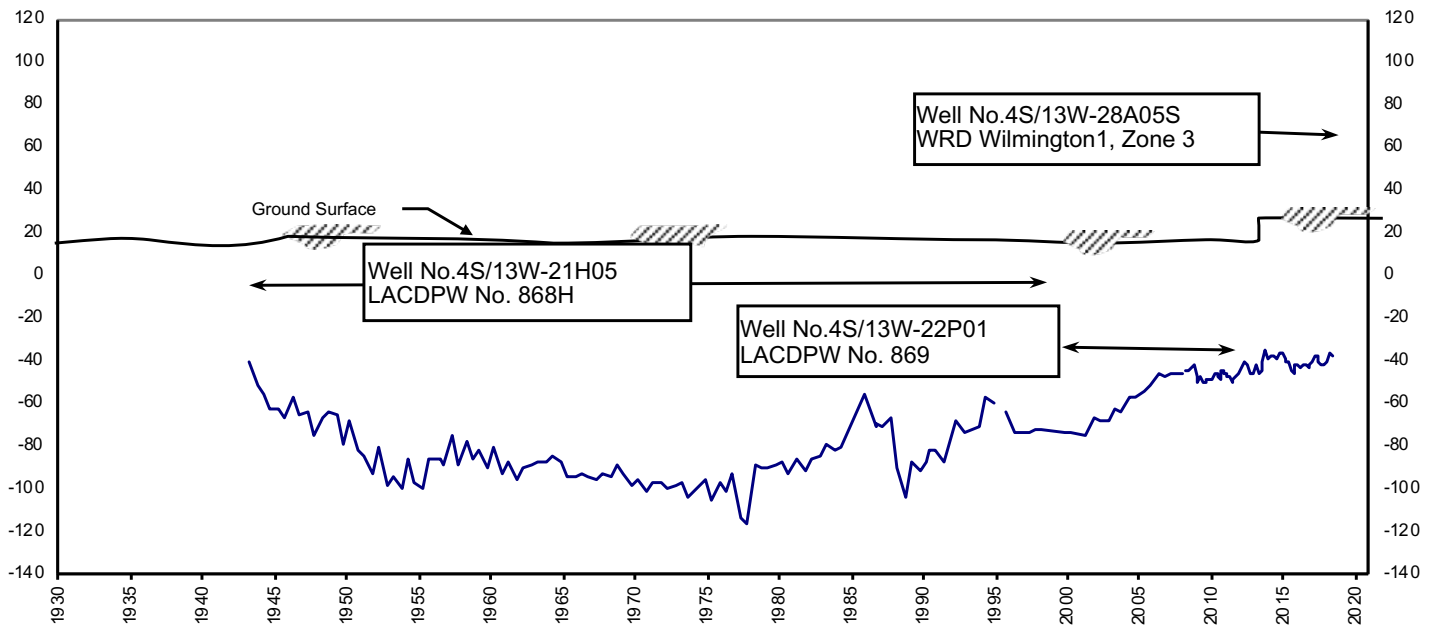
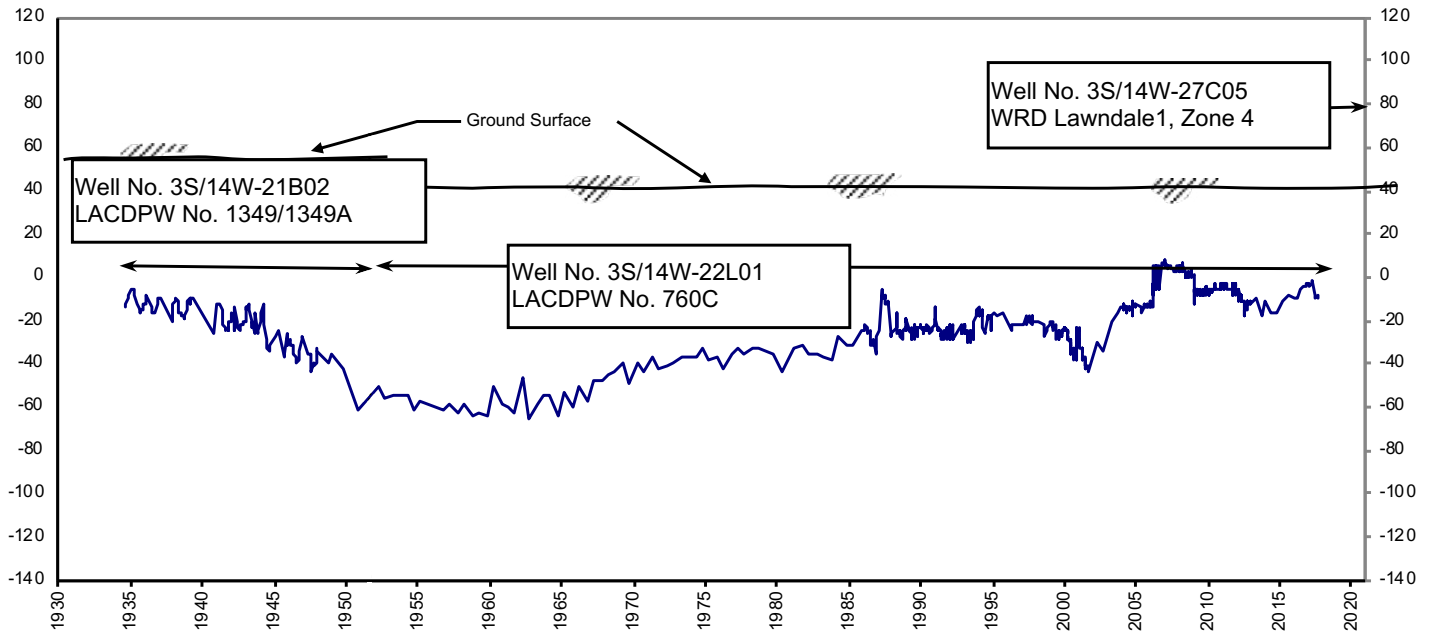


Figure 6 - Water Level Hydrographs



See Figure 3 for well locations.

X-Axis: Year

Y-Axis: Groundwater Elevation (feet mean sea level)

# Appendix A

## Groundwater Extractions

July 2019 - June 2020

## Appendix A - Groundwater Extractions (acre-feet)

7002 - ABC Nursery, Inc.	JUL	AUG	SEPT	OCT	NOV	DEC	JAN	FEB	MAR	APR	MAY	JUN	TOTAL
<b>SWN/Owner No.</b>	3.00	2.00	2.00	2.00	1.00	1.00	1.00	1.00	1.00	1.00	2.00	2.00	19.00
003S013W29F011S/1	3.00	2.00	2.00	2.00	1.00	1.00	1.00	1.00	1.00	1.00	2.00	2.00	19.00
<b>7052 - California Water Service Co./Hawthorne Lease</b>													
<b>SWN/Owner No.</b>	73.80	70.54	47.94	63.71	56.91	44.14	54.82	51.07	50.52	26.82	48.69	47.95	636.91
003S014W09M001S/13	73.80	70.54	47.94	63.71	56.91	44.14	54.82	51.07	50.52	26.82	48.69	47.95	636.91
<b>7050 - California Water Service Company</b>													
<b>SWN/Owner No.</b>	1.57	0.00	0.53	0.00	0.00	0.00	2.97	0.66	0.96	1.89	0.00	6.93	15.51
003S014W29J001S/22-01	0.73	0.00	0.22	0.00	0.00	0.00	0.47	0.37	0.53	0.65	0.00	4.78	7.75
003S014W32A002S/08-02	0.84	0.00	0.31	0.00	0.00	0.00	1.80	0.29	0.43	0.90	0.00	2.15	6.72
003S014W29H001S/30-01	0.00	0.00	0.00	0.00	0.00	0.00	0.70	0.00	0.00	0.34	0.00	0.00	1.04
<b>7053 - California Water Service Company (Dominguez)</b>													
<b>SWN/Owner No.</b>	385.91	339.00	293.99	393.14	351.15	282.78	216.42	252.39	376.18	259.60	163.07	182.89	3,496.52
004S013W15F001S/277-01	71.51	62.00	64.76	71.61	65.55	64.77	58.72	52.16	54.11	44.90	55.65	81.94	747.68
004S013W15A011S/215-01	76.09	91.06	93.99	99.73	89.49	84.15	74.21	90.08	80.13	32.09	36.61	64.15	911.78
004S013W15A014S/298-01	153.98	106.15	51.55	135.94	115.90	48.99	0.00	49.54	146.42	110.71	0.00	0.00	919.18
004S013W20C001S/279-01	84.33	79.79	83.69	85.86	80.21	84.87	83.49	60.61	95.52	71.90	70.81	36.80	917.88
<b>7623 - Eco Services Operations, LLC</b>													
<b>SWN/Owner No.</b>	43.29	12.38	73.87	29.45	33.77	40.14	30.71	35.56	41.27	31.82	38.35	34.14	444.75
004S013W10C004S/2	43.29	12.38	73.87	29.45	33.77	40.14	30.71	35.56	41.27	31.82	38.35	34.14	444.75
<b>7226 - Golden State Water Company</b>													
<b>SWN/Owner No.</b>	6.88	67.88	306.42	804.65	277.70	2.27	88.95	263.11	452.98	479.91	435.45	341.06	3,527.26
003S014W13J009S/S0005	0.00	64.52	123.37	121.48	32.14	0.07	0.00	0.15	88.54	96.04	0.08	0.51	526.90



## Appendix A - Groundwater Extractions Continued

7226 - Golden State Water Company	JUL	AUG	SEPT	OCT	NOV	DEC	JAN	FEB	MAR	APR	MAY	JUN	TOTAL
<b>SWN/Owner No.</b>	<b>6.88</b>	<b>67.88</b>	<b>306.42</b>	<b>804.65</b>	<b>277.70</b>	<b>2.27</b>	<b>88.95</b>	<b>263.11</b>	<b>452.98</b>	<b>479.91</b>	<b>435.45</b>	<b>341.06</b>	<b>3,527.26</b>
003S014W15P001S/Doty1	0.31	0.43	41.68	96.85	26.45	0.63	0.05	0.07	3.58	0.11	0.14	0.73	171.03
003S014W22L001S/CD001	0.19	0.21	0.11	0.09	0.09	0.08	0.08	0.08	0.11	0.08	0.11	0.04	1.27
003S014W13B004S/BA005	4.73	0.15	28.35	125.01	57.01	0.11	0.05	5.22	0.18	0.04	0.12	0.03	221.00
003S014W15B003S/Goldmedal #1	0.00	0.68	65.01	141.71	36.02	0.23	0.15	0.08	5.63	0.37	0.27	1.06	251.21
003S014W13B003S/BA004	0.09	0.05	0.05	0.04	0.07	0.04	0.02	1.69	0.06	0.01	0.08	0.15	2.35
003S014W14D002S/129-02	0.24	0.17	0.17	0.21	0.17	0.14	0.05	0.06	0.13	2.96	0.03	0.04	4.37
003S014W13J010S/S0006	0.24	0.20	0.18	108.45	40.64	0.15	0.00	0.00	0.00	4.94	0.06	0.19	155.05
003S014W15P002S/Doty2	0.36	0.61	45.49	97.85	15.89	0.65	0.09	0.07	0.00	0.00	0.00	0.00	161.01
003S014W25P006S/DA002	0.39	0.80	1.83	112.88	69.10	0.00	0.00	153.44	248.55	272.62	328.23	333.03	1,520.87
003S014W25P004S/DA001	0.33	0.06	0.18	0.08	0.12	0.17	88.46	102.25	106.20	102.74	106.33	5.28	512.20

7270 - Hillside Memorial Park	JUL	AUG	SEPT	OCT	NOV	DEC	JAN	FEB	MAR	APR	MAY	JUN	TOTAL
<b>SWN/Owner No.</b>	<b>15.73</b>	<b>16.80</b>	<b>13.10</b>	<b>8.25</b>	<b>1.79</b>	<b>0.66</b>	<b>2.31</b>	<b>3.74</b>	<b>1.19</b>	<b>5.73</b>	<b>9.28</b>	<b>16.44</b>	<b>95.02</b>
002S014W19K004S/3	15.73	16.80	13.10	8.25	1.79	0.66	2.31	3.74	1.19	5.73	9.28	16.44	95.02

7310 - Inglewood, City of	JUL	AUG	SEPT	OCT	NOV	DEC	JAN	FEB	MAR	APR	MAY	JUN	TOTAL
<b>SWN/Owner No.</b>	<b>299.15</b>	<b>315.56</b>	<b>318.28</b>	<b>295.01</b>	<b>338.03</b>	<b>343.85</b>	<b>329.54</b>	<b>242.17</b>	<b>168.74</b>	<b>174.26</b>	<b>274.39</b>	<b>284.35</b>	<b>3,383.33</b>
002S014W33F001S/Well No. 7	198.66	200.75	193.51	202.83	199.33	204.28	188.38	166.62	69.65	132.60	136.96	152.92	2,046.49
003S014W10G004S/2	42.53	43.25	40.60	40.13	37.46	38.90	38.61	14.35	36.63	38.42	37.24	36.32	444.44
003S014W03D003S/6	57.96	55.48	53.13	52.05	45.83	49.36	49.34	44.51	34.19	1.55	48.40	45.97	537.77
003S014W10G003S/1	0.00	16.08	31.04	0.00	55.41	51.31	53.21	16.69	28.27	1.69	51.79	49.14	354.63

7364 - Kinder Morgan Liquids Terminals LLC	JUL	AUG	SEPT	OCT	NOV	DEC	JAN	FEB	MAR	APR	MAY	JUN	TOTAL
<b>SWN/Owner No.</b>	<b>4.05</b>	<b>1.09</b>	<b>2.95</b>	<b>2.61</b>	<b>3.75</b>	<b>3.81</b>	<b>1.34</b>	<b>2.40</b>	<b>2.82</b>	<b>2.62</b>	<b>3.27</b>	<b>3.29</b>	<b>34.00</b>
/	4.05	1.09	2.95	2.61	3.75	3.81	1.34	2.40	2.82	2.62	3.27	3.29	34.00

## Appendix A - Groundwater Extractions Continued

7450 - Lomita, City of	JUL	AUG	SEPT	OCT	NOV	DEC	JAN	FEB	MAR	APR	MAY	JUN	TOTAL
<b>SWN/Owner No.</b>	0.20	0.20	0.07	0.18	0.21	0.14	0.00	0.78	0.02	0.14	0.06	0.00	2.00
004S014W35E007S/5	0.20	0.20	0.07	0.18	0.21	0.14	0.00	0.78	0.02	0.14	0.06	0.00	2.00
<b>7435 - Los Angeles County Department of Parks &amp; Recreation</b>	<b>JUL</b>	<b>AUG</b>	<b>SEPT</b>	<b>OCT</b>	<b>NOV</b>	<b>DEC</b>	<b>JAN</b>	<b>FEB</b>	<b>MAR</b>	<b>APR</b>	<b>MAY</b>	<b>JUN</b>	<b>TOTAL</b>
<b>SWN/Owner No.</b>	49.19	101.05	2.97	47.49	22.63	2.07	10.55	38.03	9.69	9.03	31.83	52.17	376.70
003S014W27C001S/00761	49.19	101.05	2.97	47.49	22.63	2.07	10.55	38.03	9.69	9.03	31.83	52.17	376.70
<b>7440 - Los Angeles County Sanitation Districts-JWPCP</b>	<b>JUL</b>	<b>AUG</b>	<b>SEPT</b>	<b>OCT</b>	<b>NOV</b>	<b>DEC</b>	<b>JAN</b>	<b>FEB</b>	<b>MAR</b>	<b>APR</b>	<b>MAY</b>	<b>JUN</b>	<b>TOTAL</b>
<b>SWN/Owner No.</b>	0.00	0.00	0.00	0.00	0.00	0.00	0.00	0.00	0.00	0.02	0.00	0.00	0.02
004S013W30C001S/819	0.00	0.00	0.00	0.00	0.00	0.00	0.00	0.00	0.00	0.02	0.00	0.00	0.02
<b>7490 - Manhattan Beach, City of</b>	<b>JUL</b>	<b>AUG</b>	<b>SEPT</b>	<b>OCT</b>	<b>NOV</b>	<b>DEC</b>	<b>JAN</b>	<b>FEB</b>	<b>MAR</b>	<b>APR</b>	<b>MAY</b>	<b>JUN</b>	<b>TOTAL</b>
<b>SWN/Owner No.</b>	31.33	30.07	29.08	26.17	12.24	0.00	7.24	5.10	1.53	2.22	10.86	2.54	158.38
003S014W29D005S/11A	5.37	4.51	0.00	2.90	1.62	0.00	0.05	2.60	1.51	1.49	10.86	2.13	33.04
003S014W29C003S/15	25.96	25.56	29.08	23.27	10.62	0.00	7.19	2.50	0.02	0.73	0.00	0.41	125.34
<b>7514 - Montrose Chemical Corporation of California</b>	<b>JUL</b>	<b>AUG</b>	<b>SEPT</b>	<b>OCT</b>	<b>NOV</b>	<b>DEC</b>	<b>JAN</b>	<b>FEB</b>	<b>MAR</b>	<b>APR</b>	<b>MAY</b>	<b>JUN</b>	<b>TOTAL</b>
<b>SWN/Owner No.</b>	-0.24	-0.11	-0.01	0.04	0.04	-0.12	-0.10	0.07	-0.17	-0.07	-0.26	-0.11	-1.04
/G-EW-4	1.74	2.36	2.02	1.99	3.07	3.38	2.82	2.55	1.88	5.06	1.73	0.01	28.61
004S014W12G001S/BF-EW-3	0.49	1.16	0.78	0.79	1.18	1.28	1.09	0.98	0.72	1.94	0.67	0.01	11.09
004S014W12A001S/G-IW-2	0.00	0.00	0.00	0.00	0.00	0.00	0.00	0.00	0.00	0.00	0.00	0.01	0.01
004S014W01P002S/UBAEW1	0.07	0.09	0.06	0.11	0.17	0.19	0.16	0.14	0.10	0.29	0.09	0.00	1.47
004S014W12L001S/G-EW-3	0.28	0.52	0.44	0.44	0.67	0.74	0.62	0.56	0.41	1.11	0.38	0.00	6.17
004S014W12J001S/BF-EW-2	1.04	1.80	1.21	1.17	1.82	2.01	1.69	1.51	1.12	3.00	1.03	0.00	17.40
004S014W01P003S/BF-EW-5	0.20	0.33	0.22	0.24	0.35	0.36	0.29	0.26	0.20	0.53	0.18	0.00	3.16
004S014W01N002S/G-IW-1	0.00	0.00	0.00	0.00	0.00	0.00	0.00	0.00	-1.46	-10.15	-4.36	-0.01	-15.98
004S014W01N004S/G-IW-7	-8.21	-1.66	-3.03	-9.64	-12.14	-12.25	-10.32	-9.42	-8.02	-7.37	0.00	-0.01	-82.07

## Appendix A - Groundwater Extractions Continued

7514 - Montrose Chemical Corporation of California	JUL	AUG	SEPT	OCT	NOV	DEC	JAN	FEB	MAR	APR	MAY	JUN	TOTAL
<b>SWN/Owner No.</b>	<b>-0.24</b>	<b>-0.11</b>	<b>-0.01</b>	<b>0.04</b>	<b>0.04</b>	<b>-0.12</b>	<b>-0.10</b>	<b>0.07</b>	<b>-0.17</b>	<b>-0.07</b>	<b>-0.26</b>	<b>-0.11</b>	<b>-1.04</b>
004S014W12J003S/G-EW-2	0.42	0.73	0.44	0.00	0.00	0.00	0.00	0.29	0.46	1.22	0.42	0.00	3.98
004S014W12B005S/BF-EW-1	0.42	0.73	0.49	0.48	0.74	0.75	0.69	0.62	0.24	0.00	0.00	0.00	5.16
004S014W12J002S/BF-EW-4	2.15	3.73	2.49	2.45	1.08	0.00	0.00	0.00	2.28	6.22	2.13	0.01	22.54
004S014W01N003S/G-IW-3	-0.60	-12.97	-7.18	0.00	0.00	0.00	-0.01	0.00	0.00	-7.21	-4.28	-0.13	-32.38
004S014W12B006S/G-EW-1	1.76	3.07	2.05	2.01	3.10	3.42	2.87	2.58	1.90	5.29	1.75	0.00	29.80

7580 - Pacific Crest Cemetery Company	JUL	AUG	SEPT	OCT	NOV	DEC	JAN	FEB	MAR	APR	MAY	JUN	TOTAL
<b>SWN/Owner No.</b>	<b>11.28</b>	<b>11.64</b>	<b>4.18</b>	<b>6.72</b>	<b>3.01</b>	<b>0.40</b>	<b>4.12</b>	<b>0.00</b>	<b>6.19</b>	<b>2.11</b>	<b>9.85</b>	<b>5.89</b>	<b>65.39</b>
003S014W33E001S/7Z 83	11.28	11.64	4.18	6.72	3.01	0.40	4.12	0.00	6.19	2.11	9.85	5.89	65.39

7093 - Phillips 66 Company	JUL	AUG	SEPT	OCT	NOV	DEC	JAN	FEB	MAR	APR	MAY	JUN	TOTAL
<b>SWN/Owner No.</b>	<b>462.53</b>	<b>455.00</b>	<b>451.27</b>	<b>447.12</b>	<b>450.43</b>	<b>417.86</b>	<b>397.76</b>	<b>416.50</b>	<b>451.29</b>	<b>196.35</b>	<b>180.98</b>	<b>216.33</b>	<b>4,543.42</b>
004S013W31N004S/LA006	2.32	4.42	24.71	70.78	68.14	70.18	69.41	63.92	67.81	63.83	64.00	54.89	624.41
004S013W21J003S/5	210.35	208.26	209.25	200.62	217.10	197.49	209.96	201.88	222.80	0.00	0.00	64.45	1,942.16
004S013W31P003S/7	249.86	242.32	217.31	175.72	165.19	150.19	118.39	150.70	160.68	132.52	116.98	96.99	1,976.85

7655 - Rolling Hills Country Club	JUL	AUG	SEPT	OCT	NOV	DEC	JAN	FEB	MAR	APR	MAY	JUN	TOTAL
<b>SWN/Owner No.</b>	<b>44.00</b>	<b>32.00</b>	<b>52.00</b>	<b>58.00</b>	<b>26.00</b>	<b>6.00</b>	<b>0.00</b>	<b>25.00</b>	<b>6.00</b>	<b>34.00</b>	<b>14.00</b>	<b>49.00</b>	<b>346.00</b>
004S014W35E006S/2	44.00	32.00	0.00	0.00	0.00	0.00	0.00	0.00	0.00	0.00	0.00	0.00	76.00
004S014W34H002S/Lake Well 2	0.00	0.00	52.00	58.00	26.00	6.00	0.00	25.00	6.00	34.00	14.00	49.00	270.00

7659 - Roman Catholic Archbishop of Los Angeles	JUL	AUG	SEPT	OCT	NOV	DEC	JAN	FEB	MAR	APR	MAY	JUN	TOTAL
<b>SWN/Owner No.</b>	<b>40.08</b>	<b>44.46</b>	<b>37.79</b>	<b>35.20</b>	<b>18.78</b>	<b>0.93</b>	<b>3.21</b>	<b>23.15</b>	<b>6.84</b>	<b>13.23</b>	<b>31.26</b>	<b>36.64</b>	<b>291.57</b>
002S014W18J001S/AA	40.08	44.46	37.79	35.20	18.78	0.93	3.21	23.15	6.84	13.23	31.26	36.64	291.57

## Appendix A - Groundwater Extractions Continued

7701 - Shell Oil Co NCWUP	JUL	AUG	SEPT	OCT	NOV	DEC	JAN	FEB	MAR	APR	MAY	JUN	TOTAL
<b>SWN/Owner No.</b>	16.84	16.37	13.34	15.55	15.00	10.95	10.49	10.60	13.32	15.39	14.68	12.30	164.83
004S013W09D001S/DR-7	0.00	0.08	0.18	0.39	0.23	0.09	0.00	0.28	0.86	0.81	0.39	0.40	3.71
004S013W10E006S/R-123	0.28	0.48	0.25	1.39	1.24	0.12	0.00	0.00	0.32	1.35	0.90	0.76	7.09
004S013W10K002S/DOM-GSP-R2M	16.00	14.77	12.23	10.60	10.82	10.41	10.49	10.04	10.64	9.72	11.20	9.22	136.14
004S013W10E005S/R-122	0.28	0.48	0.25	1.39	1.24	0.12	0.00	0.00	0.32	1.35	0.90	0.76	7.09
004S013W09P001S/DR-18	0.00	0.08	0.18	0.39	0.23	0.09	0.00	0.28	0.86	0.81	0.39	0.40	3.71
004S013W10E007S/DD-3	0.28	0.48	0.25	1.39	1.24	0.12	0.00	0.00	0.32	1.35	0.90	0.76	7.09

7720 - Southern California Edison Co.	JUL	AUG	SEPT	OCT	NOV	DEC	JAN	FEB	MAR	APR	MAY	JUN	TOTAL
<b>SWN/Owner No.</b>	3.85	4.03	2.24	0.59	0.74	0.89	1.15	1.48	0.00	3.94	3.09	3.20	25.20
003S014W34N004S/SCECO	3.85	4.03	2.24	0.59	0.74	0.89	1.15	1.48	0.00	3.94	3.09	3.20	25.20

7807 - Tesoro Refining & Marketing Co., LLC	JUL	AUG	SEPT	OCT	NOV	DEC	JAN	FEB	MAR	APR	MAY	JUN	TOTAL
<b>SWN/Owner No.</b>	308.09	352.58	433.75	446.20	364.65	394.22	369.35	403.57	395.58	434.30	621.68	664.77	5,188.74
004S013W21H008S/Well 16	0.00	0.00	0.00	0.00	0.00	0.00	0.00	0.00	0.00	19.11	187.09	242.61	448.81
004S013W27M006S/15	60.25	106.98	186.10	189.85	127.25	149.19	125.47	166.56	167.57	183.03	196.35	188.40	1,847.00
009S099W99P099S/REMED	10.13	6.45	4.94	9.28	6.96	7.09	11.00	10.25	10.99	11.72	10.85	8.84	108.50
004S013W27N006S/10	62.09	68.53	81.24	82.00	71.89	77.18	73.61	77.33	79.84	85.05	89.23	96.43	944.42
004S013W22F007S/SRP12	26.75	25.22	24.96	24.11	23.48	24.07	23.52	22.86	21.30	19.00	19.24	19.77	274.28
004S013W16J006S/WW-14	148.87	145.40	136.51	140.96	135.07	136.69	135.75	126.57	115.88	116.39	118.92	108.72	1,565.73

7510 - Torrance Refining & Marketing Company	JUL	AUG	SEPT	OCT	NOV	DEC	JAN	FEB	MAR	APR	MAY	JUN	TOTAL
<b>SWN/Owner No.</b>	70.02	93.57	82.62	69.97	72.50	78.36	77.66	65.28	6.41	7.99	26.61	10.04	661.03
004S014W02M004S/EW-1	24.40	30.22	18.43	18.66	25.80	27.99	28.04	21.58	0.00	0.00	0.00	0.00	195.12
004S014W02F001S/EW-5	14.41	27.96	27.19	24.93	20.53	29.34	32.02	31.26	3.89	0.00	0.00	0.00	211.53
004S014W02L002S/EW-3	10.14	10.37	16.58	12.07	11.92	17.11	17.60	12.44	2.52	0.00	0.00	0.00	110.75

## Appendix A - Groundwater Extractions Continued

7510 - Torrance Refining & Marketing Company	JUL	AUG	SEPT	OCT	NOV	DEC	JAN	FEB	MAR	APR	MAY	JUN	TOTAL
<b>SWN/Owner No.</b>	<b>70.02</b>	<b>93.57</b>	<b>82.62</b>	<b>69.97</b>	<b>72.50</b>	<b>78.36</b>	<b>77.66</b>	<b>65.28</b>	<b>6.41</b>	<b>7.99</b>	<b>26.61</b>	<b>10.04</b>	<b>661.03</b>
004S014W02L001S/EW-2	21.07	25.02	20.42	14.31	14.25	3.92	0.00	0.00	0.00	7.99	26.61	10.04	143.63

7850 - Torrance, City of	JUL	AUG	SEPT	OCT	NOV	DEC	JAN	FEB	MAR	APR	MAY	JUN	TOTAL
<b>SWN/Owner No.</b>	<b>383.20</b>	<b>360.64</b>	<b>326.51</b>	<b>327.25</b>	<b>284.55</b>	<b>360.82</b>	<b>345.11</b>	<b>240.20</b>	<b>229.49</b>	<b>567.09</b>	<b>426.56</b>	<b>441.02</b>	<b>4,292.44</b>
003S014W34C003S/9	153.74	165.83	178.07	185.79	173.59	155.60	207.51	95.16	12.64	161.02	177.58	145.66	1,812.19
004S014W04R002S/City Yard	177.64	33.65	0.00	0.00	0.00	0.00	0.00	0.00	39.95	274.22	34.85	109.84	670.15
004S014W04R001S/Delthorne Park	51.82	161.16	148.44	141.46	110.96	205.22	137.60	145.04	176.90	131.85	214.13	185.52	1,810.10

7054 - West Basin Brewer Desalter	JUL	AUG	SEPT	OCT	NOV	DEC	JAN	FEB	MAR	APR	MAY	JUN	TOTAL
<b>SWN/Owner No.</b>	<b>6.19</b>	<b>4.99</b>	<b>18.82</b>	<b>5.16</b>	<b>22.30</b>	<b>26.62</b>	<b>0.06</b>	<b>0.00</b>	<b>7.50</b>	<b>27.97</b>	<b>77.80</b>	<b>108.49</b>	<b>305.90</b>
004S014W09A002S/232-03	6.19	4.99	18.82	5.16	22.30	26.62	0.06	0.00	7.50	27.97	77.80	108.49	305.90

# Appendix B

Successions of Adjudicated Rights

as of

June 2020

## Appendix B - Succession of Adjudicated Rights

June 2018 (acre-feet)

ABC NURSERY, INC			SUCCESSORS IN PART TO ISABELA J GRANZ ESTATE	13.55	
SUCCESSOR TO JENKINS, HARRY C	1.80		SUCCESSORS IN PART TO GEORGE R MURDOCK	13.75	
SUCCESSOR TO TITLE, SIDNEY R AND CHARLOTTE W	13.60		SOLD TO CITY OF TORRANCE	-59.96	0.00
SUCCESSOR TO VERBURG, WILLIAM AND CLARA B	6.70		TOTAL		
SUCCESSOR IN PART TO UNITED CALIFORNIA BANK	2.00		BAUMAN, GUS A	0.00	
TOTAL	24.10		TRANSFERRED TO PALOS VERDES BEGONIA FARM		0.00
ABELL, FRANK	1.80		TOTAL		
SOLD TO CITY OF INGLEWOOD	-1.80		BEGO CORPORATION	4.10	
TOTAL	0.00		SOLD TO ESTATE OF GOLDA DELANEY	-4.10	0.00
ALCAST FOUNDRY, ET AL	7.20		TOTAL		
SOLD TO CITY OF TORRANCE	-7.20		BELVIDERE MUTUAL WATER CO	33.40	
TOTAL	0.00		SOLD TO CITY OF TORRANCE	-33.40	0.00
ALLIED CHEMICAL CORP (SEE INDUSTRIAL CHEMICAL DIVISION, ALLIED CHEMICAL CORP)			TOTAL		
ALLIED CORP			BLACK, DANA	11.80	
(FORMERLY: ALLIED CHEMICAL CORP)			SUCCESSOR IN PART TO ESTATE OF JOHN GRANT		
(NOW KNOWN AS ALLIED-SIGNAL, INC [EL SEGUNDO OFFICE])			SOLD TO ECOGAS, INC.	-11.80	0.00
ALLIED-SIGNAL, INC (TORRANCE OFFICE)			TOTAL		
SUCCESSOR TO GARRETT CORP, THE	22.50		BOISE CASCADE BUILDING CO	16.92	
(MERGED WITH HONEYWELL INTERNATIONAL, INC AND NAME CHANGED TO HONEYWELL INTERNATIONAL, INC)	-22.50		SUCCESSOR IN PART TO JOUGHIN TORRANCE RANCH		
TOTAL	0.00		SOLD TO INGLEWOOD, CITY OF	-16.92	0.00
ALLIED-SIGNAL, INC (EL SEGUNDO OFFICE) (FORMERLY: ALLIED CORP)	255.00		TOTAL		
(MERGED WITH HONEYWELL INTERNATIONAL, INC AND NAME CHANGED TO HONEYWELL INTERNATIONAL, INC)	-255.00		BOARD OF RETIREMENT-LOS ANGELES CO EMPL RET SYS		
TOTAL	0.00		SECOND WEST COAST BASIN JUDGMENT (NOW KNOWN AS LOS ANGELES COUNTY WESTERN AVE GOLF)		
ALWAG, HILARIO S AND EMMA			BRANDSMA, MAYNARD	11.80	
SUCCESSOR TO T C NAVARRO	53.90		SUCCESSOR IN PART TO ESTATE OF JOHN GRANT		
SUCCESSOR TO PEGGY SWICK	5.50		SOLD TO HILLSIDE MEMORIAL PARK	-11.80	0.00
SOLD TO TORRANCE UNIFIED SCHOOL DISTRICT	-59.40		TOTAL		
TOTAL	0.00		BURKE, W F AND LOIS PRICE	9.50	
AMERICAN PLANT GROWERS, INC			SOLD TO H S SCOTT	-9.50	0.00
SECOND WEST COAST BASIN JUDGMENT	2.60		TOTAL		
SUCCESSOR TO BEN CLUFF DAIRY	7.40		CBS INC	18.50	
SOLD TO SUNRISE GROWERS, INC	-10.00		FORMERLY COLUMBIA BROADCASTING SYS INC		
SUCCESSOR TO SUNRISE GROWERS, INC	10.00		SOLD TO MORAN, RONALD E	-9.00	9.50
SOLD TO VUKELICH MIKE, JR.	-10.00		TOTAL		
TOTAL	0.00		CALIFORNIA, STATE OF		
ANDERSON, REMBERT C	80.50		SUCCESSOR TO ROBERT L FULLILOVE	1.00	
SOLD TO SPARKLETTS DRINKING WATER CORP	-80.50		SUCCESSOR TO JOE MONIZ JR	2.20	
TOTAL	0.00		SUCCESSOR IN PART TO KELLY PIPE CO	16.30	
AQUA CAPITAL MANAGEMENT LP			SUCCESSOR IN PART TO FLAVIO RODRIGUEZ	4.00	
SUCCESSOR TO ECOGAS	11.80		SUCCESSOR IN PART TO A H SMITH (SAM SURBER AND FRED A SMITH)	2.60	
SOLD TO HILLSIDE MEMORIAL PARK AND MORTUARY	-11.80		SOLD TO SPARKLETTS DRINKING WATER CORP	-26.10	0.00
TOTAL	0.00		TOTAL		
ASAHI FANCY KOI, INC			CALIFORNIA WATER SERVICE CO	3,071.00	
SUCCESSOR IN PART TO JAKE ENGELSMA	2.00		SUCCESSOR TO PALOS VERDES WATER CO	999.00	4,070.00
TOTAL	2.00		TOTAL		
ASSOCIATED SOUTHERN INVESTMENT CO (FORMERLY EDISON SECURITIES CO)	46.70		CALIFORNIA WATER SERVICE CO (DOMINGUEZ)	10,162.45	
SOLD TO SOUTHERN CALIFORNIA EDISON CO	-46.70		DOMINGUEZ WATER CO MERGED WITH AND INTO CALIFORNIA WATER SERVICE CO, WATERMASTER ACCOUNT KNOWN AS CALIFORNIA WATER SERVICE CO (DOMINGUEZ)		
TOTAL	0.00		SUCCESSOR IN PART TO HONEYWELL INTERNATIONAL INC	255.00	
ATLANTIC RICHFIELD CO (FORMERLY RICHFIELD OIL CO)	4,428.00		TOTAL		10,417.45
SUCCESSOR TO MANVILLE SALES CORP	881.00		CARSON ESTATE CO	130.00	
SOLD TO TESORO REFINING AND MARKETING COMPANY LLC (6-13-2013)	-5,309.00		SOLD TO DOMINGUEZ WATER CORP	-130.00	0.00
TOTAL	0.00		TOTAL		
AUTOMATION INDUSTRIES			CARSON-HARBOR VILLAGE MOBILE HOME PARK	8.20	
SUCCESSOR TO HARRIS TUBE, INC	0.70		SUCCESSOR TO ETCEMENDY, CAROLINE, ESTATE OF		
TOTAL	0.70		SOLD TO MONTROSE CHEMICAL CORPORATION OF CALIFORNIA (9-28-2011)	-1.20	7.00
BALLMAN, ROSEMARY N	7.00		TOTAL		
SOLD TO UNITED CALIFORNIA BANK	-7.00		CARSON-MADRONA CO	104.00	
TOTAL	0.00		SUCCESSOR TO CHANSLOR-WESTERN OIL AND DEVELOP CO		104.00
BANK OF AMERICA NATIONAL TRUST AND SAVINGS ASSOCIATION (TRUST BI-51)	0.10		TOTAL		
RELEASED TO MICHAEL L ROCKWELL	-0.10		CENTURY BUILDERS	4.70	
TOTAL	0.00		SUCCESSOR TO UNION NURSERY, INC		4.70
BARCLAY HOLLANDER CORP (FORMERLY BARCLAY HOLLANDER CURCI INC)			TOTAL		
SUCCESSOR IN PART TO JOUGHIN TORRANCE RANCH	3.33		CHANDLERS PALOS VERDES SAND AND GRAVEL CORP	95.20	
SOLD TO TORRANCE, CITY OF	-3.33		SECOND WEST COAST BASIN JUDGMENT	15.00	
TOTAL	0.00		SUCCESSOR TO SOUTHWESTERN PORTLAND CEMENT CO	184.00	
BARCLAY HOLLANDER CURCI INC (NOW KNOWN AS BARCLAY HOLLANDER CORP)			SUCCESSOR TO TORRANCE SAND AND GRAVEL CORP		
BARCLAY, RICHARD AND R A WATT	32.66		SOLD TO ROLLING HILLS COUNTRY CLUB	-290.00	4.20
SUCCESSORS TO EMMA J OSBORN			TOTAL		

CHANSOR-WESTERN OIL AND DEVELOPMENT CO			DON WILSON BUILDERS		
(FORMERLY CHANSOR-CANFIELD MIDWAY OIL CO)	104.00		SUCCESSORS TO KASUO, ISAMU, AND	32.60	
SOLD TO CARSON-MADRONA CO	-104.00		YOSHIKI R KITA		
TOTAL		0.00	SOLD TO DOMINGUEZ WATER CORP	-32.60	
CHEMICALS CO OF ALLIED CORP			TOTAL		0.00
(FORMERLY INDUSTRIAL CHEMICAL DIVISION, ALLIED			DOUGLAS AIRCRAFT CO, INC		
CHEMICAL CORP)			(SEE MCDONNELL DOUGLAS CORP)		
(NOW KNOWN AS ALLIED CORP)			EARLY, H J AND DAISY	111.00	
			SOLD TO DOMINGUEZ WATER CORP	-91.00	
			SOLD TO SAMUEL R AND RAYMOND S	-20.00	
			FUJIMOTO		
CHEVRON USA INC	4,541.70		TOTAL		0.00
(FORMERLY STANDARD OIL CO OF CALIFORNIA)			ECOGAS, INC.		
SUBJECT TO LONG TERM LEASE FROM	59.60		SUCCESSOR TO BLACK, DANA	11.80	
ISABELLA GRANZ PER JUDGEMENT			SOLD TO AQUA CAPITAL MANAGEMENT LP	-11.80	
TOTAL		4,601.30	TOTAL		0.00
CHRISTIE, CLEM, DON C FOHL AND LEON LARSON	0.02		ECO SERVICES OPERATIONS LLC	521.00	
(TRUSTEES OF WILMINGTON CEMETERY ASSOC)			(FORMERLY SOLVAY USA INC.)		
ABANDONED WATER RIGHT	-0.02		TOTAL		521.00
TOTAL		0.00	EDISON SECURITIES CO		
CHURCHILL DOWNS CALIFORNIA CO			(NOW KNOWN AS ASSOCIATED SOUTHERN		
SUCCESSOR TO HOLLYWOOD PARK	282.00		INVESTMENT CO)		
OPERATING CO			EL SEGUNDO, CITY OF	953.00	
SOLD TO HOLLYWOOD PARK LAND COMPANY,	-282.00		TOTAL		953.00
LLC			ENGELSMA, JAKE		
TOTAL		0.00	SUCCESSOR TO WILBUR HORNSTRA	14.10	
CLUFF, BEN DAIRY			SOLD TO ASAHI FANCY KOI, INC	-2.00	
SUCCESSOR TO EDWARD AND EMILY COST	7.40		TRANSFERRED TO SUSAN ENGELSMA,	-12.10	
SOLD TO AMERICAN PLANT GROWERS, INC	-7.40		TRUSTEE ET AL		
TOTAL		0.00	TOTAL		0.00
COAST FOREST PRODUCTS			ENGELSMA, SUSAN; TRUSTEE OF THE SUSAN		
SUCCESSOR TO SOUTHWEST STEEL ROLLING	3.40		ENGELSMA TRUST		
MILLS			TRANSFERRED FROM JAKE ENGLESMA	12.10	
SOLD TO GEORGIA-PACIFIC CORP	-3.40		TOTAL		12.10
TOTAL		0.00	EQUILON ENTERPRISES, LLC		
COASTLINE CHURCH OF CHRIST			SUCCESSOR TO TEXACO REFINING AND	3,432.00	
SUCCESSOR TO LERMENS, EVELYN	0.70		MARKETING, INC		
TOTAL		0.70	SOLD TO SHELL OIL PRODUCTS US	-3,432.00	
COLLISTER, CAMERON			TOTAL		0.00
SUCCESSOR TO JOUGHIN TORRANCE RANCH	136.82		ETCHEMENDY, CAROLINE, ESTATE OF	8.20	
QUITCLAIMED TO NORMANDIE PARK	-136.82		SOLD TO CARSON-HARBOR VILLAGE MOBILE	-8.20	
TOTAL		0.00	HOME PARK		
COLUMBIA BROADCASTING SYSTEM, INC			TOTAL		0.00
(NOW KNOWN AS CBS INC)			EVERGREEN AMERICA CORP		
CONOCOPHILLIPS COMPANY			SUCCESSOR TO POTHOS CORP	5.40	
SUCCESSOR TO TOSCO CORPORATION			TOTAL		5.40
(NOW KNOWN AS PHILLIPS 66 COMPANY)			EWING, CARMELITA ROSECRANS	91.30	
COST, EDWARD AND EMILY	7.40		SOLD TO SOUTHERN CALIFORNIA WATER CO	-91.30	
SOLD TO BEN CLUFF DAIRY	-7.40		TOTAL		0.00
TOTAL		0.00	EWING, NED ET AL		
CURTIS, OWEN W	3.80		SUCCESSOR IN PART TO ISABEL J GRANZ	6.50	
SOLD TO SOUTHERN CALIFORNIA WATER CO	-3.44		ESTATE		
TOTAL		0.36	SOLD TO R A WATT, INC	-6.50	
DEL AMO ESTATE CO	121.00		TOTAL		0.00
SOLD TO DOMINGUEZ WATER CORP	-121.00		FLESH, LESLIE R AND ANDOR PASTERNAK, ET AL		
TOTAL		0.00	SUCCESSORS TO ALFRED D AND RUTH	3.50	
DELANEY, GOLDA, ESTATE OF			SEABACK		
(FORMERLY ARTHUR J DELANEY)			SOLD TO STANLEY C LAGERLOF	-3.50	
SUCCESSOR TO BEGO CORP	4.10		TOTAL		0.00
TOTAL		4.10	FLETCHER OIL AND REFINING CO		
DENNIS, ESTHER M SHEETS			(FORMERLY FLETCHER OIL CO)	86.30	
(FORMERLY ESTHER M SHEETS)	5.50		SUCCESSOR TO FLETCHER, ROBERT G ET AL	3.70	
SOLD TO TORRANCE, CITY OF	-5.50		SOLD TO WESTERN WATER CO	-90.00	
TOTAL		0.00	TOTAL		0.00
DESSER ENTERPRISES, INC.			FLETCHER, ROBERT G, DANIEL S, AND WILFRED O		
SECOND WEST COAST BASIN JUDGMENT	0.00	0.00	SUCCESSOR TO FRED A JUNGQUIST	3.70	
SOLD TO MYRON Z. CHLAVIN AND NETTIE			SOLD TO FLETCHER OIL AND REFINING CO	-3.70	
DESSER TRUST AND JHD PROPERTIES, LLC	-0.00		TOTAL		0.00
TOTAL		0.00	FUJIMOTO, SAMUEL R		
DOMINGUEZ ESTATE CO	254.00		(FORMERLY KNOWN AS FUJIMOTO, SAMUEL R		
SOLD TO DOMINGUEZ WATER CORP	-254.00		AND RAYMOND S)		
TOTAL		0.00	SUCCESSOR IN PART TO H J AND DAISY	20.00	
DOMINGUEZ WATER CORP			EARLY		
(NOW KNOWN AS DOMINGUEZ WATER CO)			SOLD TO FUJIMOTO, SAMUEL R, STEVEN T	-20.00	
DOMINGUEZ WATER CO	9,477.80		AND JON T JOINT TENANTS		
(FORMERLY KNOWN AS DOMINGUEZ WATER CORP)			TOTAL		0.00
SUCCESSOR TO CARSON ESTATE CO	130.00		FUJIMOTO, SAMUEL R AND RAYMOND S		
SUCCESSOR TO DEL AMO ESTATE CO	121.00		(SEE FUJIMOTO, SAMUEL R)		
SUCCESSOR TO DOMINGUEZ ESTATE CO	254.00		FUJIMOTO, SAMUEL R, STEVEN T AND JON K,		
SUCCESSOR TO DON WILSON BUILDERS	32.60		JOINT TENANTS		
SUCCESSOR TO HEYDENBECK, JEANETTE R	0.70		SUCCESSOR TO FUJIMOTO, SAMUEL R	20.00	
SUCCESSOR TO NAKANO, KIKUNO, ET AL	19.30		TOTAL		20.00
SUCCESSOR IN PART TO H J EARLY	91.00		FULLILOVE, ROBERT L	1.00	
SUCCESSOR IN PART TO R A WATT, INC	61.85		SOLD TO STATE OF CALIFORNIA	-1.00	
SOLD IN PART TO WATSON LAND CO	-37.60		TOTAL		0.00
SUCCESSOR TO THORPE, GREGORY	11.80		FUTURA INDUSTRIES, INC		
DOMINGUEZ WATER CO MERGED WITH AND INTO	-		SUCCESSOR TO SPANISH AMERICAN	44.40	
CALIFORNIA WATER SERVICE CO, WATERMASTER	10,162.45		INSTITUTE		
ACCOUNT KNOWN AS CALIFORNIA WATER SERVICE			SOLD TO KAUFMAN, LEO AND SHELDON BAER	-44.40	
CO (DOMINGUEZ)			TOTAL		0.00
TOTAL		0.00	GARRETT CORP, THE		



SUCCESSOR TO SHINODA BROTHERS INC	22.50		TOTAL		104.10
TRANSFERRED TO ALLIED-SIGNAL INC (TORRANCE OFFICE)	-22.50		HOCKWALD, SIGMUND S AND LIONEL S SOLD TO HILLSIDE MEMORIAL PARK	12.50 -12.50	
TOTAL		0.00	TOTAL		0.00
GATX TANK STORAGE TERMINALS CORP			HOLLYWOOD PARK INC		
SUCCESSOR TO PHILLIPS PETROLEUM CO	167.00		(FORMERLY HOLLYWOOD TURF CLUB)		
SOLD TO KINDER MORGAN LIQUIDS	-167.00		(NOW KNOWN AS HOLLYWOOD PARK OPERATING CO)		
TERMINALS, LLC.			HOLLYWOOD PARK LAND COMPANY, LLC		
TOTAL		0.00	SUCCESSOR TO CHURCHILL DOWNS CALIFORNIA COMPANY	282.00	
GEORGIA-PACIFIC CORP			TOTAL		282.00
SUCCESSOR TO COAST FOREST PRODUCTS	3.40		HOLLYWOOD PARK OPERATING CO		
SOLD TO INGLEWOOD, CITY OF	-3.40		(FORMERLY HOLLYWOOD PARK INC)	282.00	
TOTAL		0.00	SOLD TO CHURCHILL DOWNS CALIFORNIA CO	-282.00	
GERAHUE LAND CO			TOTAL		0.00
SUCCESSOR AND ASSIGNEE FOR A S	11.90		HOLLYWOOD TURF CLUB		
JOHNSTON DRILL CO			(NOW KNOWN AS HOLLYWOOD PARK INC)		
ABANDONED WATER RIGHT	-11.90		HONEYWELL INTERNATIONAL INC		
TOTAL		0.00	MERGED WITH ALLIED-SIGNAL INC (EL		
GILLINGHAM, FLORENCE R, ET AL	2.40		SEGUNDO AND TORRANCE OFFICES) AND		
TOTAL		2.40	THE CORP NAME CHANGED TO		
GOLDEN STATE WATER COMPANY			HONEYWELL INTERNATIONAL INC	277.50	
SUCCESSOR TO SOUTHERN CALIFORNIA			SOLD IN PART TO CALIFORNIA WATER	-255.00	
WATER COMPANY (NAME CHANGE)	7,502.24		SERVICE CO (DOMINGUEZ)		
TOTAL		7,502.24	TOTAL		22.50
GONZALES, FELIPE AND GABRIELA			HONOLD, KRISTIN BRANDSMA		
(NOW KNOWN AS GONZALES, GABRIELA AND			SUCCESSOR IN PART TO ESTATE OF JOHN	11.80	11.80
MARIA R)			GRANT		
GONZALES, GABRIELA AND MARIA R			HORNSTRA, WILBUR	14.10	
(FORMERLY GONZALES, FELIPE AND GABRIELA)	34.30		SOLD TO JAKE ENGELSMA	-14.10	
SOLD TO TORRANCE, CITY OF	-34.30		TOTAL		0.00
TOTAL		0.00	HUGHES AIRCRAFT	0.00	0.00
GRAND LAND CO			(SEE 1981 JUDGMENT ORDER)		
SUCCESSOR IN PART TO SMITH, A H, ET AL	5.70		HUNT, DONALD G		
ABANDONED WATER RIGHTS 1961-62	-5.70		SUCCESSOR TO JAMES SCANDA	1.90	
TOTAL		0.00	SOLD TO KENICHI INOSE	-1.90	
GRANT, JOHN, ESTATE OF	59.00		TOTAL		0.00
APPORTIONED IN PART TO BLACK, DANA	-11.80		INDUSTRIAL CHEMICAL DIVISION, ALLIED CHEMICAL		
APPORTIONED IN PART TO BRANDSMA,	-11.80		CORP		
MAYNARD			(FORMERLY ALLIED CHEMICAL CORP, GEN		
APPORTIONED IN PART TO HONOLD, KRISTIN	-11.80		CHEMICAL CO)		
BRANDSMA			(NOW KNOWN AS ALLIED CORP)		
APPORTIONED IN PART TO THORPE,	-11.80		INGLEWOOD, CITY OF	4,382.00	
GREGORY			SUCCESSOR TO ABELL, FRANK	1.80	
APPORTIONED IN PART TO THORPE,	-11.80		SUCCESSOR TO BOISE CASCADE BUILDING	16.92	
TERRENCE			CO		
TOTAL		0.00	SUCCESSOR TO GEORGIA-PACIFIC CORP	3.40	
GRANZ, ISABELA J	380.00		SUCCESSOR TO KAUFMAN, LEO AND	44.40	
PARTITIONED TO HEIRS:			SHELDON BAER		
ISABELA J GRANZ ESTATE	-33.80		SUCCESSOR IN PART TO GEORGE R	1.37	
JOUGHIN TORRANCE RANCH	-212.42		MURDOCK		
GEORGE R MURDOCK	-15.12		TOTAL		4,449.89
EMMA J OSBORN	-32.66		INOSE ET AL		
SUBJECT TO LONG TERM LEASE TO:	-59.60		(KEN K INOSE, KAY K INOSE, KIYOKO YOSHIYAMA,		
STANDARD OIL CO OF CALIF			KENICHI INOSE, KAYOKO K INOSE AND		
SUPERIOR OIL CO	-26.40		DAVID T NAKATANI, TRUSTEE OF THE INOSE CHILDREN		
TOTAL		0.00	TRUST U/D/T DATE 11/1/78)		
GRANZ, ISABELA J, ESTATE OF			(FORMERLY INOSE, KENICHI)		
SUCCESSOR IN PART TO ISABELA J GRANZ	33.80		SUCCESSOR TO HUNT, DONALD G	1.90	
SOLD IN PART TO RICHARD BARCLAY AND R A	-13.55		SUCCESSOR TO THAXTER, RALPH AND LOIS A	3.50	
WATT			LENOIR		
SOLD IN PART TO NED EWING, ET AL	-6.50		SOLD TO POTHOS CORP	-5.40	
SOLD IN PART TO R A WATT, INC	-13.75		TOTAL		0.00
TOTAL		0.00	INOSE, KENICHI		
HARRIS, R AND L			(NOW KNOWN AS INOSE ET AL)		
SUCCESSOR TO LAWRENCE I LISTON	0.70		JENKINS, HARRY C		
DISCLAIMED WATER RIGHT	-0.70		SUCCESSOR TO H L PERRY	1.80	
TOTAL		0.00	SOLD TO ABC NURSERY, INC	-1.80	
HARRIS TUBE, INC			TOTAL		0.00
SUCCESSOR IN PART TO B ROBINSON AND	0.70		JOHNS-MANVILLE PRODUCTS CORP		
ASSOCIATES			(SEE JOHNS-MANVILLE SALES CORP)		
TRANSFERRED TO AUTOMATION IND INC-	-0.70		JOHNS-MANVILLE SALES CORP		
HARRIS TUBE			(FORMERLY: JOHNS-MANVILLE PRODUCTS CORP		
TOTAL		0.00	MANVILLE SERVICE CORP)		
HAWTHORNE, CITY OF	1,882.00		(NOW KNOWN AS MANVILLE SALES CORP)		
TOTAL		1,882.00	TOTAL		0.00
HENDERSON, BEATRICE M	1.30		JOHNSTON, A S, DRILLING CO	11.90	
ABANDONED WATER RIGHT	-1.30		ASSIGNED TO GERAHUE LAND CO	-11.90	
TOTAL		0.00	TOTAL		0.00
HEYDENBECK, JEANETTE R			JONES, ANNA MAE	50.20	
(FORMERLY JEANETTE R REIFSNYDER)	0.70		SOLD TO CITY OF TORRANCE	-50.20	
SOLD TO DOMINGUEZ WATER CORP	-0.70		TOTAL		0.00
TOTAL		0.00	JOUGHIN TORRANCE RANCH		
HILLSIDE MEMORIAL PARK	16.70		SUCCESSOR IN PART TO ISABELA J GRANZ	212.42	
SUCCESSOR TO SANTA FE LAND	39.50		SOLD IN PART TO BARCLAY HOLLANDER	-3.33	
IMPROVEMENT CO			CURCI INC		
SUCCESSOR TO SIGMUND S AND LIONEL S	12.50		SOLD IN PART TO BOISE CASCADE BUILDING	-16.92	
HOCKWALD			CO		
SUCCESSOR TO THORPE, TERRENCE	11.80		SOLD IN PART TO COLLISTER, CAMERON	-136.82	
SUCCESSOR TO BRANDSMA, MAYNARD	11.80		SOLD IN PART TO R A WATT, INC	-55.35	
SUCCESSOR TO AQUA CAPITAL	11.80		TOTAL		0.00
MANAGEMENT L.P.					

## West Coast Basin Watermaster

JUNGQUIST, FRED A (FORMERLY KATHERINE P WOODMAN) SOLD TO ROBERT G FLETCHER ET AL	3.70 -3.70		(NOW KNOWN AS LOMITA, CITY OF WATER SYSTEM WWD 13)		
TOTAL		0.00	LOS ANGELES COUNTY WATERWORKS DISTRICT NO 22	551.00	
KAHLERT, ET AL			SOLD TO SOUTHERN CALIF WATER CO	-551.00	0.00
AND SUCCESSOR IN PART TO KELLY PIPE CO	18.90		TOTAL		
SOLD TO SPARKLETTS DRINKING WATER CORP	-18.90		LOS ANGELES COUNTY WESTERN AVE GOLF COURSE (FORMERLY BOARD OF RETIREMENT OF THE LOS ANGELES COUNTY EMPLOYEES RETIREMENT SYSTEM)		
TOTAL		0.00	(NOW KNOWN AS LOS ANGELES CHESTER L WASH GOLF)		
KAUFMAN, LEO AND SHELDON BAER SUCCESSOR TO FUTURA INDUSTRIES INC	44.40		LOYOLA MARYMOUNT UNIVERSITY (FORMERLY LOYOLA UNIVERSITY OF LOS ANGELES)	48.10	
SOLD TO CITY OF INGLEWOOD	-44.40		TOTAL		48.10
TOTAL		0.00	MANHATTAN BEACH, CITY OF	1,131.20	
KELLY PIPE CO	49.00		TOTAL		1,131.20
SOLD IN PART TO STATE OF CALIFORNIA	-16.30		MANVILLE SALES CORP	881.00	
SOLD IN PART TO KAHLERT, ET AL	-18.90		(FORMERLY: JOHNS-MANVILLE SALES CORP JOHNS-MANVILLE PRODUCTS CORP MANVILLE SERVICE)		
SOLD IN PART TO SPARKLETTS DRINKING WATER CORP	-13.80		SOLD TO ATLANTIC RICHFIELD CO	-881.00	
TOTAL		0.00	TOTAL		0.00
KINDER MORGAN LIQUIDS TERMINALS, LLC. SUCCESSOR TO GATX TANK STORAGE TERMINALS CORP.	167.00		MANVILLE SERVICE CORP (SEE JOHNS-MANVILLE SALES CORP)		
TOTAL		167.00	MARTIN BROTHERS BOX CO, INC	3.40	
KITA, ISAMU, KASUO, AND YOSHIKI R SOLD TO DON WILSON BUILDERS	32.60 -32.60		SOLD TO SOUTHWEST STEEL ROLLING MILLS	-3.40	
TOTAL		0.00	TOTAL		0.00
KURTZ, GLADYS SOLD TO SPARKLETTS DRINKING WATER CORP	3.50 -3.50		MAYFLOWER NURSERIES (HERBERT SAKAYE FUKUWAI, DBA)	0.00	
TOTAL		0.00	TOTAL		0.00
LAGERLOF, STANLEY C SUCCESSOR TO LESLIE R FLESCH AND ANDOR PASTERNAK, ET AL	3.50		MCCANDLESS, JAMES	6.70	
SOLD TO SHELL OIL CO	-3.50		SOLD TO SPARKLETTS DRINKING WATER CORP	-6.70	
TOTAL		0.00	TOTAL		0.00
LAWLER, JAMES K SOLD TO B ROBINSON AND ASSOC	3.10 -3.10		MCDONNELL DOUGLAS CORP (FORMERLY DOUGLAS AIRCRAFT, CO INC)		
TOTAL		0.00	LONG TERM LEASE FROM UNITED STATES NAVY DEPARTMENT	1.70	
LERMENS, EVELYN (FORMERLY LERMENS, ALFRED) SOLD TO COASTLINE CHURCH OF CHRIST	0.70 -0.70		TOTAL		1.70
TOTAL		0.00	MOBIL OIL CORP (FORMERLY SOCONY MOBIL OIL CO)	2,570.00	
LEUZINGER, EMMA L	1.40		SUCCESSOR TO SUPERIOR OIL CO	26.40	
TOTAL		1.40	TOTAL		2,596.40
LISTON, LAWRENCE SOLD TO R AND L HARRIS	0.70 -0.70		MONETA MUTUAL WATER CO	916.00	
TOTAL		0.00	SOLD TO CITY OF TORRANCE	-916.00	
LITTLE, WILLIAM SUCCESSOR TO ROCKWELL, MICHAEL SOLD TO WATT INDUSTRIAL PROPERTIES	0.10 -0.10		TOTAL		0.00
TOTAL		0.00	MONIZ, JOE JR	2.20	
LOMITA, CITY OF WATER SYSTEM (WWD 13) (FORMERLY LOS ANGELES COUNTY WATERWORKS DISTRICT NO 13)	1,352.00		SOLD TO STATE OF CALIFORNIA	-2.20	
TOTAL		1,352.00	TOTAL		0.00
LONG BEACH, CITY OF	0.70		MONTROSE CHEMICAL CORPORATION OF CALIFORNIA		
TOTAL		0.70	SUCCESSOR TO CARSON-HARBOR VILLAGE MOBILE HOME PARK (9-28-2011)	1.20	
LOPES, FRANK	3.70		TOTAL		1.20
TOTAL		3.70	MORAN, RONALD E		
LOS ANGELES, CITY OF	1,503.00		SUCCESSOR IN PART TO COLUMBIA BROADCASTING SYSTEM, INC	9.00	
TOTAL		1,503.00	SOLD TO CITY OF TORRANCE	-9.00	
LOS ANGELES COUNTY-ALONDRA PARK SUCCESSOR TO LOS ANGELES COUNTY FLOOD CONTROL DIST	28.70 39.00		TOTAL		0.00
MERGED WITH LOS ANGELES COUNTY CHESTER L. WASHINGTON GOLF COURSE UNDER NEW NAME "LOS ANGELES COUNTY RECREATION FACILITIES"	-67.70		MORI, ROY H AND KENJI		
TOTAL		0.00	SECOND WEST COAST BASIN JUDGMENT	5.60	
LOS ANGELES COUNTY CHESTER L WASHINGTON GOLF COURSE	296.00		SOLD TO NOZAKI, SUMIKICHI	-2.00	
(FORMERLY LOS ANGELES COUNTY WESTERN AVENUE GOLF COURSE)			TOTAL		3.60
MERGED WITH LOS ANGELES COUNTY ALONDRA PARK UNDER NEW NAME "LOS ANGELES COUNTY RECREATION FACILITIES"	-296.00		MURDOCK, GEORGE R		
TOTAL		0.00	SUCCESSOR IN PART TO ISABELA J GRANZ	15.12	
LOS ANGELES COUNTY FLOOD CONTROL DISTRICT SUCCESSOR IN PART TO A H SMITH, ET AL	37.60 1.40		SOLD IN PART TO R BARCLAY AND R A WATT	-13.75	
SOLD TO LOS ANGELES COUNTY - ALONDRA PARK	-39.00		SOLD IN PART TO CITY OF INGLEWOOD	-1.37	
TOTAL		0.00	TOTAL		0.00
LOS ANGELES COUNTY RECREATION FACILITIES MERGER OF LOS ANGELES COUNTY ALONDRA PARK, AND LOS ANGELES COUNTY CHESTER L. WASHINGTON GOLF COURSE	67.70		MYRON Z. CHLAVIN AND NETTIE DESSER TRUST AND JHD PROPERTIES, LLC		
TOTAL		363.70	SUCCESSOR TO DESSER ENTERPRISES, INC.	0.00	
LOS ANGELES COUNTY SANITATION DIST NO 2	102.00		TOTAL		0.00
TOTAL		102.00	NAKANO, KIKUNO, ET AL	19.30	
LOS ANGELES COUNTY WATERWORKS DISTRICT NO 13			SOLD TO DOMINGUEZ WATER CORP	-19.30	
			TOTAL		0.00
			NAVARRO, T C	53.90	
			SOLD TO HILARIO S AND EMMA ALWAG	-53.90	
			TOTAL		0.00
			NORAIR, A DIVISION OF NORTHPROP CORP (FORMERLY KNOWN AS NORTHPROP AIRCRAFT, INC) (NOW KNOWN AS NORTHPROP CORP)		
			NORMANDIE PARK	136.82	
			SUCCESSOR TO COLLISTER, CAMERON	-136.82	
			SOLD TO CITY OF TORRANCE		
			TOTAL		0.00
			NORTHPROP CORP (FORMERLY KNOWN AS NORAIR, A DIV OF NORTHPROP CORP)	38.15	
			TOTAL		38.15
			NOZAKI, SUMIKICHI		

SUCCESSOR IN PART TO MORI, ROY H AND KENJI	2.00		RYAN AERONAUTICAL CO	20.20	
SUCCESSOR IN PART TO UNITED CALIFORNIA BANK	5.00		SOLD TO SOUTHERN CALIFORNIA WATER CO TOTAL	-20.20	0.00
TOTAL		7.00	SANTA FE LAND IMPROVEMENT CO	39.50	
OSBORN, EMMA J			SOLD TO HILLSIDE MEMORIAL PARK TOTAL	-39.50	0.00
SUCCESSOR IN PART TO ISABELA J GRANZ SOLD TO R BARCLAY AND R A WATT	32.66 -32.66		SCANDA, JAMES AND GEORGE NASSIN SOLD TO DONALD G HUNT	1.90 -1.90	
TOTAL		0.00	TOTAL		0.00
OTANI, CHISATO	0.00		SCHLAEGEL, KEITH W AND OPAL B SOLD TO SIDNEY R AND CHARLOTTE W TITLE	13.60 -13.60	
TOTAL		0.00	TOTAL		0.00
PACIFIC CREST CEMETERY CO	17.70		SCOTT, H S		
SUCCESSOR TO H S SCOTT	9.50		SUCCESSOR TO W F BURKE AND LOIS PRICE	9.50	
SUCCESSOR TO WADA, KAORU AND SATORU	12.20		QUITCLAIMED TO PACIFIC CREST CEMETERY CO	-9.50	
TOTAL		39.40	TOTAL		0.00
PALOS VERDES BEGONIA FARM			SEABACK, ALFRED D AND RUTH	3.50	
SUCCESSOR TO GUS A BAUMAN	0.00		SOLD TO LESLIE R FLESH AND OR PASTERNAK, ET AL	-3.50	
TOTAL		0.00	TOTAL		0.00
PALOS VERDES WATER CO	999.00		SEPULVEDA, LOUIS M	0.70	
SOLD TO CALIFORNIA WATER SERVICE CO	-999.00		ACQUIRED BY RUFFNER CORP	-0.70	
TOTAL		0.00	TOTAL		0.00
PARK WATER CO	160.00		SHEETS, ESTHER M		
SOLD TO SOUTHERN CALIFORNIA WATER	-160.00		(FORMERLY CLYDE L SHEETS) (SEE DENNIS, ESTHER M SHEETS)		
TOTAL		0.00	SHELL OIL CO	4,516.00	
PARKE, ZORAIDA	1.80		SUCCESSOR TO LAGERLOF, STANLEY C	3.50	
SOLD TO H L PERRY	-1.80		SOLD IN PART TO UNION OIL CO OF CAL	-1,974.00	
TOTAL		0.00	SOLD IN PART TO UNION OIL CO OF CAL	-1,526.00	1,019.50
PASCHKE, WILLIAM JOSEPH	0.02		TOTAL		
ABANDONED WATER RIGHT	-0.02		SHELL OIL PRODUCTS US		
TOTAL		0.00	SUCCESSOR TO EQUILON ENTERPRISES, LLC	3,432.00	
PERRY, H L			SOLD TO TESORO REFINING AND MARKETING COMPANY	-3,432.00	
SUCCESSOR TO ZORAIDA PARKE	1.80		TOTAL		0.00
SOLD TO HARRY C JENKINS	-1.80		SHINODA BROTHERS, INC		
TOTAL		0.00	SECOND WEST COAST BASIN JUDGMENT	22.50	
PHILLIPS 66 COMPANY (FORMERLY CONOCOPHILLIPS COMPANY)	6,170.00		SOLD TO GARRETT CORP, THE	-22.50	
TOTAL		6,170.00	TOTAL		0.00
PHILLIPS PETROLEUM CO (FORMERLY TIDEWATER OIL CO)	167.00		SMITH, A H, (SAM SURBER AND FRED A SMITH)	9.70	
SOLD TO GATX TANK STORAGE TERM CORP	-167.00		SOLD IN PART TO STATE OF CALIFORNIA	-2.60	
TOTAL		0.00	SOLD IN PART TO GRAND LAND CO	-5.70	
POTHOS CORP			SOLD IN PART TO L A CO FLOOD CONTROL DISTRICT	-1.40	
SUCCESSOR TO INOSE ET AL	5.40		TOTAL		0.00
SOLD TO EVERGREEN AMERICA CORP	-5.40		SOCONY MOBIL OIL CO (SEE MOBIL OIL CO)		
TOTAL		0.00	SOLVAY USA INC. (NOW KNOWN AS ECO SERVICES OPERATIONS LLC)		
REHOR, JOSEPHINE P	2.20		SOUTHERN CALIFORNIA EDISON CO	10.40	
TOTAL		2.20	SUCCESSOR TO ASSOCIATED SOUTHERN INVESTMENT CO	46.70	
REIFSNYDER, JEANETTE R (NOW KNOWN AS JEANNETTE R HEYDENBECK)			TOTAL		57.10
RHODIA, INC (NOW KNOWN AS SOLVAY USA INC.)			SOUTHERN CALIFORNIA WATER CO	6,265.30	
SUCCESSOR TO RHONE-POULENC INC			SUCCESSOR TO EWING, CARMELITA	91.30	
RHONE-POULENE BASIC CHEMICALS CO			ROSECRANS		
SUCCESSOR TO STAUFFER CHEMICAL CO	521.00		SUCCESSOR TO LOS ANGELES COUNTY WATERWORKS DIST NO 22	551.00	
SOLD TO RHONE-POULENE INC	-521.00		SUCCESSOR TO PARK WATER CO	160.00	
TOTAL		0.00	SUCCESSOR TO RYAN AERONAUTICAL CO	20.20	
RHONE-POULENC INC			SUCCESSOR TO SOUTHERN PACIFIC CO	166.00	
SUCCESSOR TO RHONE-POULENC, BASIC CHEMICALS CO	521.00		SUCCESSOR IN PART TO OWEN W CURTIS	3.44	
SOLD TO RHODIA, INC	-521.00		SUCCESSOR IN PART TO B ROBINSON AND ASSOCIATES	2.40	
TOTAL		0.00	SUCCESSOR TO WESTERN WATER SERVICE COMPANY	242.60	
RICHFIELD OIL CORP (NOW KNOWN AS ATLANTIC RICHFIELD CO)			NAME CHANGE TO GOLDEN STATE WATER COMPANY	-7,502.24	
ROBINSON, B, AND ASSOCIATES			TOTAL		0.00
SUCCESSOR TO JAMES K LAWLER	3.10		SOUTHERN PACIFIC CO	166.00	
SOLD IN PART TO HARRIS TUBE, INC	-0.70		SOLD TO SO CALIFORNIA WATER CO	-166.00	
SOLD IN PART TO SOUTHERN CALIFORNIA WATER CO	-2.40		TOTAL		0.00
TOTAL		0.00	SOUTHERN WESTERN PORTLAND CEMENT COMPANY		
ROCKWELL, MICHAEL L			SOLD TO CHANDLERS PALOS VERDES AND GRAVEL CORP	15.00	
SUCCESSOR TO BANK OF AMERICA NATIONAL TRUST AND SAVINGS ASSOCIATION (TRUST B 1-51)	0.10		TOTAL	-15.00	0.0
SOLD TO LITTLE, WILLIAM	-0.10		SOUTHWEST STEEL ROLLING MILLS		
TOTAL		0.00	SUCCESSOR TO MARTIN BROTHERS BOX CO, INC	3.40	
RODRIGUEZ, FLAVIO	6.10		SOLD TO COAST FOREST PRODUCTS	-3.40	
SOLD TO STATE OF CALIFORNIA	-4.00		TOTAL		0.00
DISCLAIMED WATER RIGHT	-2.10		SPANISH AMERICAN INSTITUTE	44.40	
TOTAL		0.00	SOLD TO FUTURA INDUSTRIES, INC	-44.40	
ROMAN CATHOLIC ARCHBISHOP OF LOS ANGELES (HOLY CROSS CEMETERY)	72.30		TOTAL		0.00
TOTAL		72.30	SPARKLETTS DRINKING WATER CORP		
ROLLING HILLS COUNTRY CLUB			SUCCESSOR TO ANDERSON, REMBERT C, ET AL	80.50	
SUCCESSOR TO CHANDLERS PALOS VERDES SAND AND GRAVEL CORP.	290.00				
TOTAL		290.00			
RUFFNER CORP					
SUCCESSOR TO LOUIS M SEPULVEDA	0.70				
ABANDONED WATER RIGHT	-0.70				
TOTAL		0.00			

# West Coast Basin Watermaster

SUCCESSOR TO CALIFORNIA, STATE OF	26.10		TOTAL		0.00
SUCCESSOR TO KAHLERT, ET AL	18.90		TOSCO CORP		
SUCCESSOR TO KURTZ, GLADYS	3.50		SUCCESSOR TO UNION OIL CO OF CALIF	6,170.00	
SUCCESSOR TO MCCANDLESS, JAMES	6.70		MERGED INTO CONOCOPHILLIS COMPANY	-	
SUCCESSOR TO WECHSLER, B A	3.10			6,170.00	
SUCCESSOR IN PART TO KELLY PIPE CO	13.80		TOTAL		0.00
SOLD TO WESTERN WATER CO	-152.60		TUNE, MATES, ET AL		
TOTAL		0.00	SUCCESSOR TO JOSEPHINE WATKINSON	3.10	
STANDARD OIL CO OF CALIFORNIA			SOLD TO B A WECHSLER	-3.10	
(NOW KNOWN AS CHEVRON U S A, INC)			TOTAL		0.00
STAUFFER CHEMICAL CO	521.00		UNION NURSERY, INC		
SOLD TO RHONE-POULENC BASIC CHEMICALS	-521.00		SECOND WEST COAST BASIN JUDGMENT	4.70	
CO			SOLD TO CENTURY BUILDERS	-4.70	
TOTAL		0.00	TOTAL		0.00
SUNRISE GROWERS, INC			UNION OIL CO OF CALIFORNIA	2,670.00	
SUCCESSOR TO AMERICAN PLANT GROWERS	10.00		SUCCESSOR IN PART TO SHELL OIL CO	1,974.00	
INC			SUCCESSOR IN PART TO SHELL OIL CO	1,526.00	
SOLD TO AMERICAN PLANT GROWERS, INC	-10.00		SOLD TO TOSCO CORP	-6,170.00	
TOTAL		0.00	TOTAL		0.00
SUPERIOR OIL CO			UNITED CALIFORNIA BANK		
SUBJECT TO LONG TERM LEASE FROM	26.40		SUCCESSOR TO BALLMAN, ROSEMARY N	7.00	
ISABELA J GRANZ			SOLD TO A B C NURSERY, INC	-2.00	
SOLD TO MOBIL OIL CORP	-26.40		SOLD TO NOZAKI, SUMIKICHI	-5.00	
TOTAL		0.00	TOTAL		0.00
SWICK, PEGGY	5.50		UNITED STATES NAVY DEPARTMENT	1.70	
SOLD TO HILARIO AND EMMA ALWAG	-5.50		LONG TERM LEASE TO MCDONNELL DOUGLAS	-1.70	
TOTAL		0.00	CORP PER JUDGEMENT		
TESORO REFINING AND MARKETING COMPANY			TOTAL		0.00
SUCCESSOR TO SHELL OIL PRODUCTS US			UNITED STATES STEEL CORP	1,791.00	
(NOW KNOWN AS TESORO REFINING &			SOLD TO TORRANCE, CITY OF	-1,791.00	
MARKETING COMPANY LLC)			TOTAL		0.00
TESORO REFINING & MARKETING COMPANY LLC			VERBURG, WILLIAM AND CLARA B	6.70	
(FORMERLY TESORO REFINING AND			SOLD TO ABC NURSERY, INC	-6.70	
MARKETING COMPANY)	3,432.00		TOTAL		0.00
SUCCESSOR TO ATLANTIC RICHFIELD			VUKELICH MIKE, JR.		
COMPANY (6-13-2013)	5,309.00	8,741.00	SUCCESSOR TO AMERICAN PLANT	10.00	
			GROWERS, INC.		
TEXACO, INC			TOTAL		10.00
(NOW KNOWN AS TEXACO REFINING AND			WADA, KAORU AND SATORU	12.20	
MARKETING, INC)			SOLD TO PACIFIC CREST CEMETERY CO	-12.20	
TEXACO REFINING AND MARKETING, INC	3,432.00		TOTAL		0.00
(FORMERLY: TEXACO, INC)			WATKINSON, JOSEPHINE	3.10	
SOLD TO EQUILON ENTERPRISES, LLC	-3,432.00		SOLD TO MATES TUNE, ET AL	-3.10	
TOTAL		0.00	TOTAL		0.00
THAXTER, RALPH AND LOIS A LENOIR	3.50		WATSON LAND CO	42.60	
SOLD TO KENICHI INOSE	-3.50		SUCCESSOR IN PART TO DOMINGUEZ WATER	37.60	
TOTAL		0.00	CORP		
THORPE, GREGORY			TOTAL		80.20
SUCCESSOR IN PART TO ESTATE OF JOHN	11.80		WATT INDUSTRIAL PROPERTIES		
GRANT			SUCCESSOR TO WILLIAM LITTLE	0.10	
SOLD TO DOMINGUEZ WATER CORP	-11.80		TOTAL		0.10
TOTAL		0.00	WATT, R A, INC		
THORPE, TERENCE			SUCCESSOR TO NED EWING, ET AL	6.50	
SUCCESSOR IN PART TO ESTATE OF JOHN	11.80		SUCCESSOR IN PART TO ISABELA J GRANZ	13.75	
GRANT			ESTATE		
SOLD TO HILLSIDE MEMORIAL PARK	-11.80		SUCCESSOR IN PART TO JOUGHIN TORRANCE	55.35	
TOTAL		0.00	RANCH		
TIDEWATER OIL CO			SOLD TO DOMINGUEZ WATER CORP	-61.85	
(SEE PHILLIPS PETROLEUM CO)			SOLD TO CITY OF TORRANCE	-13.75	
TITLE, SIDNEY R AND CHARLOTTE W			TOTAL		0.00
SUCCESSOR TO KEITH W AND OPAL B	13.60		WECHSLER, B A		
SCHLAEGE L			SUCCESSOR TO MATES TUNE, ET AL	3.10	
SOLD TO ABC NURSERY, INC	-13.60		SOLD TO SPARKLETTS DRINKING WATER	-3.10	
TOTAL		0.00	CORP		
TORRANCE, CITY OF	2,519.00		TOTAL		0.00
SUCCESSOR TO BARCLAY HOLLANDER CORP	3.33		WESTERN WATER CO		
SUCCESSOR TO BARCLAY, RICHARD AND			SUCCESSOR TO FLETCHER OIL AND REFINING	90.00	
WATT, R A	59.96		CO		
SUCCESSOR TO BELVIDERE MUTUAL WATER	33.40		SUCCESSOR TO SPARKLETTS DRINKING	152.60	
CO			WATER CORP		
SUCCESSOR TO DENNIS, ESTHER M SHEETS	5.50		SOLD TO WESTERN WATER SERVICES CO	-242.60	
SUCCESSOR TO ALCAST FOUNDRY ET AL	7.20		TOTAL		0.00
SUCCESSOR TO GONZALES, GABRIELA AND	34.30		WESTERN WATER SERVICES CO *		
MARIA R			SUCCESSOR TO WESTERN WATER CO.	242.60	
SUCCESSOR TO JONES, ANNA MAE	50.20		SOLD TO SOUTHERN CALIFORNIA WATER	-242.60	
SUCCESSOR TO MONETA WATER CO	916.00		COMPANY		0.00
SUCCESSOR TO MORAN, RONALD E	9.00		WESTON INVESTMENT CO	184.00	
SUCCESSOR TO NORMANDIE PARK	136.82		SOLD TO TORRANCE SAND AND GRAVEL	-184.00	
SUCCESSOR TO TORRANCE UNIFIED SCHOOL	59.40		CORP		
DISTRICT			TOTAL		0.00
SUCCESSOR TO UNITED STATES STEEL CORP	1,791.00		WISEBURN SCHOOL DISTRICT	8.20	
SUCCESSOR TO WATT, R A, INC	13.75		TOTAL		8.20
TOTAL		5,638.86	WOODMAN, KATHERINE P		
TORRANCE SAND AND GRAVEL CORP			(SEE FRED A JUNGQUIST)		
SUCCESSOR TO WESTON INVESTMENT CO	184.00		ZEIGLER, MAXWELL T	0.00	
SOLD TO CHANDLERS PALOS VERDES	-184.00		TOTAL		0.00
SAND AND GRAVEL CORP					
TOTAL		0.00	GRAND TOTAL	64,468.25	64,468.25
TORRANCE UNIFIED SCHOOL DISTRICT					
SUCCESSOR TO HILARIO S AND EMMA ALWAG	59.40				
SOLD TO CITY OF TORRANCE	-59.40				

\* WESTERN WTR. SERV.CO. - PARTY WITH ZERO AR FOR THE DURATION OF LONG TERM LEASE AGREEMENT WITH CHEVRON (ENDED JUNE 30, 2013)

# Appendix C

Parties to the Amended Judgment

as of

June 2020

**ABC Nursery, Inc**

Aqua Capital Management LP

**Asahi Fancy Koi, Inc.**

Atlantic Richfield Company

**Automation Industries, Inc.**

**CBS, Inc.**

**California Water Service Company (Hermosa Redondo)**

**California Water Service Company (Dominguez)**

California Water Service Company (Hawthorne Lease)

**Carson-Harbor Village Mobile Home Park**

**Carson-Madrona Company**

**Century Builders**

**Chandler's Palos Verdes Sand & Gravel Company**

**Chevron USA, Inc**

**Coastline Church of Christ**

**Curtis, Owen W.**

**Delaney, Golda, Estate of**

**El Segundo, City of**

**Engelsma, Susan Trust**

**Evergreen America Corp.**

**Fujimoto, S.R., S.T. & J.K.**

**Gillingham, Florence R., et al.**

**Golden State Water Company**

**Hawthorne, City of**

**Hillside Memorial Park**

**Hollywood Park Land Company, LLC**

**Honeywell International, Inc.**

**Honold, Kristin Brandsma**

Hughes Aircraft Company

**Inglewood, City of**

Inglewood Park Cemetery

**Kinder Morgan Liquids Terminals, LLC**

**Leuzinger, Emma L. Estate of**

**Lomita, City of Water System**

**Long Beach, City of**

**Lopes, Frank**

**Los Angeles, City of**

**Los Angeles County Recreation Facilities**

**Los Angeles County Sanitation District 2**

**Loyola Marymount University**

**Manhattan Beach, City of**

Mayflower Nurseries

**McDonnell Douglas Corporation**

**Torrance Refining Co.**

**Montrose Chemical Corporation**

**Mori, Roy H. and Kenji**

Myron Z. Chlavin & Nettie Desser Trust & JHD Pr.

**Northrop Corporation**

**Nozaki, Sumikichi**

**Pacific Crest Cemetery Company**

Palos Verdes Begonia Farm

**Phillips 66 Company**

**Rehor, Josephine P.**

**Eco Services Operation, LLC**

**Rolling Hills Country Club**

Rolling Hills Vista

**Roman Catholic Archbishop of Los Angeles**

**Shell Oil Company**

**Southern California Edison Company**

**Tesoro Refining and Marketing Company**

**Torrance, City of**

**Vukelich, Mike Jr.**

Water Replenishment District

**Watt Industrial Property**

**Watson Land Company**

West Basin Municipal Water District

Western Water Service Company

**Wiseburn School District**

Zeigler, Maxwell T.

Parties that are bold signify water rights holders.

## **Appendix D**

Erratum of West Coast Basin Watermaster Annual Report  
for July 1,2018 - June 30, 2019

Report Page No.	Original Text	Correction
1	2018-2019 Rights Holders: 59	2018-2019 Rights Holders: 56
1	2018-2019 Total water use by parties: 193,562	2018-2019 Total water use by parties: 193,603
14	Table 1: Golden State Water Company -Total Rights: 13,214.10 -2019-2020 Normal Carryover: 3,391.49 -2019-2020 Total Carryover: 3,391.49	Table 1: Golden State Water Company -Total Rights: 12,099.10 -2019-2020 Normal Carryover: 4,202.24 -2019-2020 Total Carryover: 4,205.63
18	Table 8: Party: Montrose Chemical Corporation Issued: November 7, 2012 Expires: October 31, 2063	Table 8: Party: Montrose Chemical Corporation Issued: July 1, 2012 Expires: June 30, 2063
18	Table 8: Party: Brewer Desalter Issued: July 22, 1992 Expires: December 28, 2011	Table 8: Montrose Chemical Corporation removed from Table
47	Appendix C: The parties listed below are in bold, which signifies that they are a water rights holder: -California Water Service Company (Hawthorne Lease)	Appendix C: The parties listed below should not be in bold, they are not a water rights holder: -California Water Service Company (Hawthorne Lease)
47	Appendix C: Ocean Industries listed in bold	Appendix C: Ocean Industries had a name change and should be listed in bold as Watt Industrial Property