

# WATERMASTER SERVICE

## IN THE WEST COAST BASIN - LOS ANGELES COUNTY

July 1, 2014 - June 30, 2015

October 2016



## WEST COAST BASIN WATERMASTER

### WEST COAST BASIN WATER RIGHTS PANEL

Prepared by the Administrative Body



This report is available at [www.wrd.org](http://www.wrd.org)

Printed copies are available.

Send requests to:

[watermaster@wrdd.org](mailto:watermaster@wrdd.org)

# WATERMASTER SERVICE

IN THE WEST COAST BASIN  
LOS ANGELES COUNTY

July 1, 2014 - June 30, 2015

October 2016

**WEST COAST BASIN  
WATER RIGHTS PANEL**



Prepared by

Water Replenishment District of Southern California

West Coast Basin Administrative Body

for the

West Coast Basin Watermaster Water Rights Panel

Adopted on

October 4, 2016

# Foreword

2014-2015 saw dramatic changes in the governance of West Coast Basin water rights as a result of amendment to the West Coast Basin Judgment on December 5, 2014. Among other things, the Judgment now permits parties holding water rights to store water in the West Coast Basin for later recovery. This ability to access available storage space, as well as other provisions for increased flexibility, provide the framework for the optimal utilization of the West Coast Basin to meet the future water demands of the region.

The Amended Judgment also established a new Watermaster, which replaces the Department of Water Resources in that role. The Watermaster now consists of three separate arms with different functions.

The first arm is the Administrative Body, to administer the Watermaster accounting and reporting functions. The Water Replenishment District of Southern California was appointed by the court to fulfill this role.

The second arm is the Water Rights Panel which enforces issues related to the pumping rights within the adjudication. The Water Rights Panel is made up of five water rights holders. Three of these water rights holders are the elected officers of president, vice-president and treasurer of the West Basin Water Association, currently the City of Torrance, Golden State Water Company and the City of El Segundo. The remaining two members are selected by the Board of the West Basin Water Association; currently filled by California Water Service Company and Tesoro Refining and Marketing Company.

The third arm is the Storage Panel which is comprised of the Water Rights Panel and the WRD Board of Directors, which together approve certain groundwater storage efforts.

This 2014-2015 Watermaster Report, developed by the Administrative Body and adopted by the West Coast Basin Water Rights Panel, provides information on groundwater extractions, storage accounts, use of imported water and recycled water, replenishment operations, and the budget and finances of Watermaster during the 2014-2015 administrative year. The format of this report is in keeping with format used by the Department of Water Resources in previous years. Watermaster greatly appreciates the assistance and support received from the Department of Water Resources during this transition year and will continue to build off the excellent work they have done in past years.

# Contents

<b>I. Forward</b>	ii
<b>II. Notes</b>	iii
<b>III. Summary of Pertinent Data</b>	1
<b>IV. Introduction</b>	2
<b>V. Water Use</b>	
<b>A. Adjudicated Rights Extractions by Parties</b>	3
<b>B. Groundwater Storage Activity by Parties</b>	3
<b>C. Excess Production</b>	3
<b>D. Extractions by Nonparties</b>	4
<b>E. Extractions of Contaminated Groundwater</b>	4
<b>F. Adjudicated Rights Transfers</b>	4
<b>G. Storage Transfers</b>	5
<b>H. Exchange Pool</b>	5
<b>I. Status of Extraction Wells</b>	5
<b>J. Meter Testing Program</b>	5
<b>VI. Water Supply</b>	
<b>A. Precipitation</b>	7
<b>B. Groundwater Recharge</b>	7
<b>C. In-Lieu Replenishment</b>	7
<b>D. Imported Water</b>	8
<b>E. Quality of Imported Water</b>	9
<b>F. Recycled Water</b>	9
<b>G. Exported Water</b>	9
<b>H. Seawater Seawater Intrusion Barrier Projects</b>	9
<b>I. Groundwater Levels</b>	10
<b>VII. Watermaster Administrative Costs and Budget</b>	10

# Tables/Figures

1	Water Rights Accounting	11
2	Storage Accounting	16
3	Water Put Into Storage	17
4	Water Extracted from Storage	17
5	Storage Transfers	17
6	Historic Storage	18
7	Excess Production	18
8	Extractions by Nonparties	18
9	Non-Consumptive Water Use Permits	19
10	Adjudicated Rights Transfers	20
11	Sales and Purchases	24
12	Exchange Pool	26
13	Extraction Wells Completed	26
14	Extraction Wells Destroyed	26
15	Replenishment Operations	27
16	WRD In-Lieu Recharge	27
17	Imported Water Use	28
18	Recycled Water Use	29
19	Alamitos Barrier Operations	30
20	Income and Expenditures	30
21	Approved Budget	31
22	Apportionment of Budget Among Parties	31
	Figure 1 – West Coast Basin (showing groundwater production and key wells)	34
	Figure 2 – West Coast Basin (showing key wells and facilities)	35
	Figure 3 – Monthly Rainfall and Water Use	36
	Figure 4 – Key Well Hydrographs Montebello Forebay	37

# Appendix

A	Groundwater Extractions	39
B	Succession of Adjudicated Rights, June 2015	68

## West Coast Basin Administrative Body

Water Replenishment District of  
Southern California

West Coast Basin Water Rights  
Panel

**President**

Willard H. Murray, Jr.  
Division 1

**Chair**

Rob Beste  
City of Torrance

**Vice-President**

Rob Katherman  
Division 5

**Vice-Chair**

Kate Nutting  
Golden State Water Company

**Secretary**

John D. S. Allen  
Division 3

**Treasurer**

Stephanie Katsouleas  
City of El Segundo

**Treasurer**

Albert Robles  
Division 5

Ron Sorenson  
California Water Service Company

Denis Kurt  
Tesoro Refining and Marketing Company

**Director**

Sergio Calderon  
Division 4

## Summary of Pertinent Data

Item	Fiscal Year 2013 - 2014	Fiscal Year 2014 - 2015
Parties to judgment	65	65
Active pumpers	24	24
Active nonparties	0	0
Adjudicated Rights (acre-feet)	64,468.25	64,468.25
Rainfall (inches)	4.35	8.37
Injection at barrier projects (acre-feet)	25,851.00	23,234.10
<b>Watermaster expenses, total</b>	<b>\$219,984.00</b>	<b>\$310,178.00</b>
Watermaster expenses, per Adjudicated Right	\$3.41	\$4.81
Adjudicated Right Extractions (acre-feet)	42,297	39,096
Recycled water use by parties (acre-feet)	28,037	36,145
Imported water use by parties (acre-feet)	163,668	166,502
Exported water use by parties (acre-feet)	0	0
<b>Total water use by parties (acre-feet)</b>	<b>234,002</b>	<b>241,734</b>



# Introduction

The West Coast Basin (Basin) underlies 160 square miles in the southwestern part of the coastal plain of Los Angeles County. Figure 1 shows the location and boundaries of the West Coast Basin. The Basin is bounded on the west by the Santa Monica Bay, on the north by the Ballona Escarpment, on the east by the Newport-Inglewood Uplift, and on the south by the San Pedro Bay and the Palos Verdes Hills. Twenty incorporated cities and several unincorporated areas overlie the Basin. An essential portion of the water needed by the residents and industries in the area overlying the Basin is pumped directly from the groundwater in storage. In 1945, when intrusion of seawater caused by declining water levels threatened the quality of the groundwater supply, legal action was begun to halt the overdraft and prevent further damage to the Basin. In 1955, the Superior Court of Los Angeles County (Court) appointed the Division of Water Resources as the Watermaster to administer an Interim Agreement,<sup>3</sup> and in 1961, the Court retained the Department of Water Resources (DWR) as the Watermaster of the final West Coast Basin Judgment (Judgment).

On December 5, 2014, the West Coast Basin Judgment was amended (Amended Judgment). The Amended Judgment established a new Watermaster structure, which replaces the Department of Water Resources. The new Watermaster consists of an Administrative Body, Water Rights Panel and Storage Panel. The Administrative Body is the Water Replenishment District of Southern California, the Water Rights Panel is composed of five West Coast Basin adjudicated rights holders, and the Storage Panel is composed of the WRD Board of Directors and the Water Rights Panel.

The Watermaster assists the Court administer and enforce the provisions of the Judgment. Among other duties, the Watermaster monitors groundwater levels and extractions and reports significant water-related.

# Water Use

## A. Adjudicated Rights Extractions by Parties

The Judgment limits the amount of groundwater each party may extract annually from the Basin. This limit, referred to as the Adjudicated Right shown in Table 1 for each party. A recipient of Exchange Pool water may pump the amount released to it in addition to its Adjudicated Right. The volume of water extracted from most wells is reported monthly. Appendix A lists, by party, the volume of groundwater extracted each month from each active well in the Basin. Figure 1 shows the pattern of groundwater extractions during 2014-2015.

To provide flexibility in the control of groundwater extractions, the Judgment contains provisions allowing each party to carry over into the succeeding administrative its unused Adjudicated Rights. This amount of available carryover, however, is reduced by the amount of Stored Water held by that party, however, this reduction shall not cause the amount of Carryover to be less than 20% of the Party's adjudicated rights.

## B. Groundwater Storage Activity by Parties

The Amended Judgment permits parties holding water rights to store water in the West Coast Basin for later recovery. During 2014-2015, 1,097.77 acre-feet of water was put into storage and none was extracted or transferred.

All of this water was put into storage pursuant to Section V.4.B of Judgment, which allows parties to convert carryover to storage upon payment of the Replenishment Assessment to WRD.

## C. Excess Production

The Judgment provides for overextractions under certain conditions. A party may over extract by no more than 2 acre-feet or 10% of a Party's Adjudicated Right, whichever is greater. When a party overextracts in violation of the Judgment, Watermaster notifies the party to resolve the overextraction issue. Under certain circumstances, a party may overextract in a greater amount; however, prior approval must be obtained from the Watermaster – Water Rights Panel. The excess production must be made up in the following administrative year unless the Court that to require the party to make up the excess production would create an unreasonable hardship for the party.

Table 7 lists the names of parties that have over extracted groundwater during the year and shows the amount of overextraction by each party. During 2014-2015, three parties had a combined excess production 128.91 acre-feet.

#### **D. Extractions by Nonparties**

There were no extractions by non-parties in 2014-2015.

#### **E. Extractions of Contaminated Groundwater**

94.85 acre-feet of contaminated groundwater was extracted from the West Coast Basin during 2014-2015.

#### **F. Adjudicated Rights Transfers**

Each year, Adjudicated Rights are transferred between parties through sales and leases. Appendix B shows the succession of Adjudicated Rights in the West Coast Basin as of June 30, 2015. Sales have reduced the number of parties from 508 in 1966-1967 to 131 in 2014-2015.

Table 10 shows transfers of Adjudicated Rights through leases and Table 11 shows transfers of Adjudicated Rights through sales and purchases. During 2014-2015 there were no sales of Adjudicated Rights and 11 leases that totaled 9827 acre-feet. Each party's Adjudicated Right, as of June 30, 2015, is also shown in Table 1.

When land is sold on which a water right has been developed, the Watermaster must be furnished a copy of the sale document if the water right is also sold. The water right does not pass to the new land owner unless the sale document specifies that the water right was sold with the land. For the proper accounting of the water right, the sale document must specify the exact amount of water right.

In transferring water rights, parties must specify (1) the type of right (i.e., adjudicated rights, normal carryover, or drought carryover), (2) the amount of right to the nearest 0.01 acre-foot, and (3) the period of the lease, if applicable. Moreover, all leases must be made on an administrative year basis and must be executed by the parties and received by Watermaster Administrative Body by June 30 of the year in which the lease is effective.

#### **G. Storage Transfers**

The Judgment provides for the transfer of stored water between parties. There were no transfers of stored water during the 2014-2015 administrative year.

#### **H. Exchange Pool**

The Judgment authorizes an Exchange Pool to provide additional water rights to parties without

sufficient water. If a party's estimated water requirement for the following fiscal year exceeds its total available water supply, that party may request additional water from the Exchange Pool. There were no requests for Exchange Pool water during 2014-2015 Administrative Year.

#### **I. Status of Extraction Wells**

In the Basin there are 306 reported active extraction wells and 231 reported inactive extraction wells (Appendix A). The locations of the active extraction wells are shown on Figure 1. Table 13 shows two new extraction wells were completed Table 14 shows that no extraction wells were destroyed.

#### **J. Meter Testing Program**

During 2014-2015, the Department of Water Resources, acting as Watermaster, visited 15 parties and tested 39 meters. Tests showed that 1 meter was more than 5 percent slow, with registration accuracy of minus 17 percent. No meters were found to be more than 5 percent fast.



# Water Supply

## A. Precipitation

During 2014-2105, 7.45 inches of precipitation were measured at Los Angeles International Airport, 8.05 inches at Long Beach Airport, and 9.61 inches at Torrance Airport. The mean precipitation over the West Coast Basin was 8.37 inches, which is 66% of the long-term mean of 12.63 inches.

## B. Groundwater Recharge

Replenishment in the West Coast Basin occurs primarily by underflow from the Central Basin, which bounds the West Coast Basin on the east, and injection of imported and recycled water into the West Coast and Dominguez Gap Seawater intrusion barriers located along the coast.

Water spread in the Central Basin percolates into the aquifers there, and eventually some groundwater crosses the Newport-Inglewood Uplift to replenish the groundwater in the West Coast Basin. Although the recharge water is not directly applied to the West Coast Basin, this recharge process returns large quantities of water to the Basin by substantially increasing the natural subsurface flow from the Central Basin to the West Coast Basin. During 2014-2015, Los Angeles County Department of Public Works (LACDPW) spread 47,207 acre-feet of water in the Montebello forebay. The amount of water spread this year was 16 percent less than the amount spread in 2013-2014. Less water was available for spreading, in part, because the Metropolitan Water District of Southern California (MWD) discontinued the delivery of discounted water for groundwater replenishment in August 2011 and because of the ongoing drought. Table 17 identifies the sources and shows the amounts of replenishment water spread in the Central Basin.

Water injected in the sea water intrusion barrier projects also contributes greatly to the replenishment of the West Coast Basin (see Sea Water Intrusion Barrier Projects). In 2014-2015, 23,235 acre-feet of water was injected into these two barrier systems, which is 10% less than the amount injected in 2013-2014. This reduced injection is a result of the decreased demands at the barrier as a result of higher groundwater levels. Table 19 provides a summary of the quantity and type of water injected into the barrier systems.

## C. In-Lieu Replenishment

During the 1965-1966 water year, WRD, in cooperation with the Metropolitan Water District of Southern California (MWD), began an in-lieu replenishment program. WRD may contract with any producer having access to supplemental water that could be used in lieu of extracting groundwater from the Basin.

In recent years, MWD has discontinued the availability of its supplemental replenishment water, thereby making the In-Lieu Program economically unfeasible in the West Coast Basin. As a result, the In-Lieu Replenishment Program has been suspended indefinitely.

#### D. Imported Water

For the area overlying the West Coast Basin, imported water has been the largest component of supply since the mid-1950s. Table 17` shows sources, users, and quantities of imported water. During 2014-2015, parties and two nonparties (California-American Water Company and LACDPW) imported a total of 172,953 acre-feet of water. California-American Water Company, a nonparty, pumped and imported 2,953 acre-feet of water from Central Basin and imported 667 acre-feet from WBMWD.

#### E. Quality of Imported Water

<b>Constituent</b>	<b>Colorado River Water<sup>4</sup> (mg/L)</b>	<b>State Water Project Water<sup>5</sup> (mg/L)</b>
Chloride	82	74
Sulfate	220	44
Hardness (as CaCO <sub>3</sub> )	270	110
Total Dissolved Solids	590	280

<sup>4</sup> At Lake Mathews - from 2014 MWD Annual Water Quality Report

<sup>5</sup> At Castaic Lake - from 2014 MWD Annual Water Quality Report

## **F. Recycled Water**

Table 18 shows that 14,902 acre-feet of recycled water were used in the area overlying the Basin during 2014 - 2015. This amount is 1,144 acre-feet more than was used in 2013-2014. These amounts do not include the recycled water used to replenish groundwater in the Basin.

## **G. Exported Water**

No groundwater was exported from the Basin. California Water Service Company exported purchased water from the Basin to portions of its service area in the Palos Verdes Hills.

## **H. Seawater Intrusion Barrier Projects**

Sea water intrusion in the Alamitos Gap near the mouth of the San Gabriel River poses a threat to the groundwater in the Central Basin. The Alamitos Barrier Project is designed to prevent sea water intrusion into the fresh water aquifers of the Basin. The location of the barrier is shown on Figure 2. The Los Angeles County Department of Public Works operates the barrier project, which is comprised of four extraction wells that can be used to create a groundwater trough and 43 injection wells that create a groundwater ridge to halt sea water intrusion. In addition, the project includes 220 observation wells that are used to monitor groundwater levels and quality in the area. Table 20 shows the quantities of imported water and of recycled water injected into the barrier wells and the quantity of water extracted. The sea water intrusion problem has been contained by the barrier project.

## **I. Groundwater Levels**

Figure 2 shows the locations of selected wells that are used to monitor groundwater level elevations. Figure 4 shows the water level elevations in key wells located in the Montebello forebay, and Figure 5 shows the water level elevations in wells perforated in the principal water producing aquifers in the Basin.



# Watermaster Administration Costs and Budget

For the transitional year of 2014-2015, it was agreed that DWR would continue its role as Watermaster until June 30, 2015 using funds they had collected as part of their 2013-2014 approved budget of \$261,000.

Table 1 - Water Rights Accounting (acre-feet)

Party	Sales	Adjudicated Right 2014-2015	Carryover from 2013-2014	Leases		Allowable Extraction	Amount Pumped	Carryover Conversion	Balance	Allowable carryover into 2015-2016	
				With Flex	w/o Flex					DCO	Normal
ABC Nursery, Inc.		24.10	4.82			28.92	23.00		5.92	5.92	5.92
Aqua Capital Management LP		11.80	2.36			14.16	0.00		14.16	11.80	11.80
Asahi Fancy koi, Inc		2.00	34.20			36.20	0.00		36.20	2.00	34.20
Automation Industries, Inc		0.70	5.40			6.10	0.00		6.10	0.70	4.10
Cal. Water Service Co./Hawthorne Lease		0.00	75.11	1,882.00		1,957.11	1,912.38		44.73	44.73	44.73
California Water Service Company		4,070.00	814.00			4,884.00	1,896.14		2,987.86	2,987.86	2,987.86
Cal. Water Service Company (Dominguez)		10,417.45	2,083.49			12,500.94	3,915.70		8,585.24	8,585.24	8,585.24
Carson-Harbor Village Mobile Home Park		7.00	2.00			9.00	0.00		9.00	7.00	7.00
Carson-Madrona Company		104.00	20.80			124.80	0.00		124.80	104.00	104.00
CBS, Inc.		9.50	2.00			11.50	0.00		11.50	9.50	9.50
Century Builders		4.70	2.00			6.70	0.00		6.70	4.70	4.70
Chandler Palos Verdes Sand & Gravel Co.		294.20	3.72	-40.00		257.92	220.00		37.92	37.92	37.92
Chevron USA Inc.		4,601.30	2.00	-4,601.00		2.30	0.00		2.30	0.30	0.30
Coastline Church of Christ		0.70	5.40			6.10	0.00		6.10	0.70	4.10
ConocoPhillips Company		6,170.00	2,021.78			8,191.78	5,643.99		2,547.79	787.78	1,760.01
Curtis, Owen W		0.36	4.72			5.08	0.00		5.08	2.72	3.08
Delaney, Golda Estate of		4.10	12.20			16.30	0.00		16.30	10.20	14.30
Eco Services Operations LLC		521.00	97.43			618.43	552.51		65.92	65.92	65.92
El Segundo City of		953.00	0.40	-953.00		0.40	0.00		0.40	0.00	0.00
Engelsma, Susan Trust		12.10	2.00	-12.10		2.00	0.00		2.00	0.00	0.00
Evergreen America Corporation		5.40	2.00			7.40	0.00		7.40	5.40	5.40
ExxonMobil Oil Corporation		2,596.40	549.71			3,146.11	1,260.56		1,885.55	30.43	1,855.12
Fujimoto, SR. & St & JK		20.00	16.28			36.28	0.00		36.28	12.28	20.00
Gillingham, Florence R, et al		2.40	2.00			4.40	0.00		4.40	2.40	2.40
Golden State Water Company <sup>1</sup>		7,502.24	1,111.21	5,354.00		11,153.45	11,149.07		4.38	3.39	0.99
Hawthorne, City of		1,882.00	2.00	-1,882.00		2.00	0.00		2.00	0.00	0.00
Hillside Memorial Park		92.30	7.30			99.60	113.18		-13.58	-13.58	-13.58
Hollywood Park Land Company, LLC		282.00	0.00	-282.00		0.00	0.00		0.00	0.00	0.00
Honeywell International, Inc.		22.50	4.50			27.00	0.00		27.00	22.50	22.50
Honold, Kristin Brandsma		11.80	2.36			14.16	0.00		14.16	11.80	11.80
Hughes Aircraft Company		0.00	0.00			0.00	0.00		0.00	0.00	0.00
Inglewood Park Cemetery		0.00	2.00			2.00	0.00		2.00	0.00	0.00
Inglewood, City of		4,449.89	946.38	144.00		5,540.27	1,808.72		3,731.55	162.71	3,731.55
Kinder Morgan Liquids Terminals LLC		167.00	33.40			200.40	37.69		162.71	4.50	162.71
Leuzinger, Emma L Estate of		1.40	6.50			7.90	0.00		7.90	1.40	5.90
Lomita, City of		1,352.00	130.40	-750.00		732.40	687.72		44.68	44.68	44.68
Long Beach, City of		0.70	2.00			2.70	0.00		2.70	0.70	0.70
Lopes, Frank		3.70	11.40			15.10	0.00		15.10	3.70	13.10
LA County Dept. of Parks & Recreation		363.70	-1.50			362.20	428.16		-65.96	-65.96	-65.96
LA County Sanitation Districts		102.00	20.40			122.40	0.00		122.40	102.00	102.00
LA Dept. of Water and Power		1,503.00	300.60			1,803.60	0.00		1,803.60	1,503.00	1,503.00

Table 1 - Water Rights Accounting Continued

Party	Sales	Adjudicated Right 2014-2015	Carryover from 2013-2014	Leases		Allowable Extraction	Amount Pumped	Carryover Conversion	Balance	Allowable DCO	Normal	Total
				With Flex	w/o Flex							
Loyola Marymount University		48.10	9.62			57.72	0.00		57.72		48.10	48.10
Manhattan Beach, City of		1,131.20	65.18	950.00		2,146.38	1,884.29		262.09		262.09	262.09
Maxwell T. Zeigler		0.00	2.00			2.00	0.00		2.00		0.00	0.00
Mayflower Nurseries		0.00	1.95			1.95	0.00		1.95		0.00	0.00
McDonnell Douglas Corp		1.70	2.00			3.70	0.00		3.70		1.70	1.70
Montrrose Chemical Corporation		1.20	0.05			1.25	0.00		1.25		1.25	1.25
Mori, Roy H and Kenji		3.60	11.20			14.80	0.00		14.80	9.20	3.60	12.80
Myron Z. Chalavin, et. al.		0.00	2.42	12.10		14.52	1.60		12.92		12.10	12.10
Northrop Corporation		38.15	7.63			45.78	0.00		45.78		38.15	38.15
Pacific Crest Cemetery Company		39.40	-31.01			8.39	57.76		-49.37		-49.37	-49.37
Palos Verdes Begonia Farm		0.00	7.40			7.40	0.00		7.40	7.40	0.00	7.40
Rehor, Josephine P		2.20	2.00			4.20	0.00		4.20		2.20	2.20
Rolling Hills Vista		0.00	2.00			2.00	0.00		2.00		0.00	0.00
Roman Catholic Archbishop of Los Angeles		72.30	-27.44	288.00		332.86	254.93		77.93		77.93	77.93
Shell Oil Company		1,019.50	2.08	-1,019.50		2.08	0.00		2.08	0.08	0.00	0.08
Southern California Edison Co.		57.10	17.64			74.74	16.68		58.06	6.22	51.84	58.06
Sumikichi Nozaki		7.00	2.00			9.00	0.00		9.00		7.00	7.00
Tesoro Refining & Marketing Company		8,741.00	1,938.10	1,019.50		11,698.60	3,711.30		7,987.30		7,987.30	7,987.30
Torrance, City of		5,638.86	1,097.77	-150.00		6,586.63	2,413.93	1,097.77	3,074.93		3,074.93	3,074.93
Vukelich, Mike Jr.		10.00	10.00	40.00		60.00	46.10		13.90		13.90	13.90
Watson Land Company		80.20	16.04			96.24	0.00		96.24		80.20	80.20
Watt Industrial Properties		0.10	3.00			3.10	0.00		3.10	1.00	0.10	1.10
Western Water Service Company		0.00	2.00			2.00	0.00		2.00		0.00	0.00
Wiseburn School District		8.20	2.00			10.20	0.00		10.20		8.20	8.20
<b>Total:</b>	<b>0.00</b>	<b>64,468.25</b>	<b>11,490.40</b>	<b>0.00</b>	<b>0.00</b>	<b>73,144.65</b>	<b>38,035.39</b>	<b>1,097.77</b>	<b>34,011.47</b>	<b>923.60</b>	<b>32,642.39</b>	<b>33,565.99</b>

<sup>1</sup> Allowable extraction reduced by 2,814 acre-feet from retiring water rights for this administrative year.

Table 2 - Storage Accounting

Party	Carryover from 2013-2014		2014-2015 Storage Activity										Carryover to 2015-2016		
	ISA <sup>1</sup>	CSP <sup>2</sup>	Transfers		Water put into Storage		Water Extracted From Storage		Balance		Total	ISA	CSP	Total	
			ISA	CSP	ISA	CSP	ISA	CSP	ISA	CSP					
Torrance, City of	-	-	-	-	1,097.77	-	-	-	1,097.77	-	-	1,097.77	-	-	1,097.77
<b>West Coast Basin Total</b>	0.00	0.00	0.00	0.00	1,097.77	0.00	0.00	0.00	1,097.77	0.00	1,097.77	1,097.77	0.00	0.00	1,097.77

<sup>1</sup> Individual Storage Account.  
<sup>2</sup> Community Storage Pool.

Table 3 - Water Put Into Storage

Party	Quantity	Storage Account <sup>1</sup>	Storage Method <sup>2</sup>	Date
Torrance, City of	1,097.77	ISA	CC	7/1/15
<b>Total:</b>	<b>1,097.77</b>			

Table 4 - Water Extracted From Storage

Party	Quantity	Storage Account	Date
No stored water was extracted in 2014 - 2015			

Table 5 - Storage Transfers

Party	Quantity	Storage Account	Date
No stored water was transferred in 2014 - 2015			

<sup>1</sup> CSP = Community Storage Pool. ISA = Individual Storage Account.

<sup>2</sup> CC = Carryover Conversion.

Table 6 - Historic Storage

Year	Water Put Into Storage			Water Extracted From Storage			Balance			Available Adjudicated Storage Capacity		
	ISA	CSP	Total	ISA	CSP	Total	ISA	CSP	Total	ISA	CSP	Total
2014-15	1,097.77	0	1,097.77	0	0	1,097.77	1,097.77	0	1,097.77	24,702.23	35,500	60,202.23

Table 7 - Excess Production

Party	Adjudicated Rights	Allowable Extraction	Amount Pumped	Overextraction <sup>1</sup>	Allowable Overextraction <sup>2</sup>
Hillside Memorial Park	92.30	99.60	113.18	13.58	9.23
LA County Parks & Recreation	363.70	362.20	428.16	65.96	36.37
Pacific Crest Cemetary	39.40	8.39	57.76	49.37	3.94
<b>Total</b>				<b>128.91</b>	

<sup>1</sup> Overextraction = Allowable Extraction - Amount Pumped.

<sup>2</sup> Judgment allows overextractions computed as 2 acre-feet or 10 percent of the adjudicated rights plus leases with flex, whichever is greater.

Table 8 - Extractions by Nonparties

Nonparty	Amount Pumped (acre-feet)
There were no extractions by non-parties.	
<b>Total</b>	

Table 9 - Non-Consumptive Water Use Permits/Exemptions

Party	Date	2014-2015 Extraction
Montrose Chemical Corporation	November 7, 2012	4.70
Brewer Desalter	July 22, 1992	965.75
Shell Oil	December 28, 2011	90.15
<b>Total</b>		<b>1,060.60</b>

Table 10 - Adjudicated Rights Transfers (acre-feet)

Party	Transaction Type	Amount	Recordation Date	Party	Net Amount
California Water Service Co./Hawthorne Lease	Lease with flex	1,882.00	2/1/13	Hawthorne, City of	1,882.00
Chandler Palos Verdes Sand & Gravel Company	Lease with flex	40.00	5/29/15	Vukelich, Mike Jr.	-40.00
Chevron USA Inc.	Lease with flex	950.00	4/16/13	Manhattan Beach, City of	-4,601.00
Chevron USA Inc.	Lease with flex	3,651.00	6/19/14	Golden State Water Company	
El Segundo City of	Lease with flex	953.00	5/28/15	Golden State Water Company	-953.00
Englesma, Susan Trust	Lease with flex	12.10	6/12/07	Myron Z. Chlavin & Nettie Desser Trust & JHD Properties LLC	-12.01
Golden State Water Company	Lease with flex	3,651.00	6/19/14	Chevron USA Inc.	5,354.00
Golden State Water Company	Lease with flex	953.00	5/28/15	El Segundo, City of	
Golden State Water Company	Lease with flex	750.00	5/29/15	Lomita, City of Water Department	
Hawthorne, City of	Lease with flex	1,882.00	2/1/13	California Water Service Co./Hawthorne Lease	-1,882.00
Hollywood Park Land Company, LLC	Lease with flex	282.00	5/12/14	Inglewood, City of	-282.00
Inglewood, City of	Lease with flex	282.00	5/12/14	Hollywood Park Land Company, LLC	144.00
Inglewood, City of	Lease with flex	138.00	6/11/15	Roman Catholic Archbishop of Los Angeles	
Lomita, City of Water Department	Lease with flex	750.00	5/29/15	Golden State Water Company	-750.00
Manhattan Beach, City of	Lease with flex	950.00	4/16/13	Chevron USA Inc.	950.00
Myron Z. Chlavin & Nettie Desser Trust & JHD Properties LLC	Lease with flex	12.10	6/12/07	Englesma, Susan Trust	12.10
Roman Catholic Archbishop of Los Angeles	Lease with flex	150.00	7/30/14	Torrance, City of	288.00
Roman Catholic Archbishop of Los Angeles	Lease with flex	138.00	6/11/15	Inglewood, City of	
Shell Oil Company	Lease with flex	1,019.50	5/25/12	Tesoro Refining & Marketing Company	-1,019.50
Tesoro Refining & Marketing Company	Lease with flex	1,019.50	5/25/12	Shell Oil Company	1,019.50
Torrance, City of	Lease with flex	150.00	7/30/14	Roman Catholic Archbishop of Los Angeles	-150.00
Vukelich, Mike Jr.	Lease with flex	40.00	5/29/15	Chandler Palos Verdes Sand & Gravel Company	40.00



Table 11 - Sales and Purchases (acre-feet)

Party	Transaction Type	Amount	Recordation Date	Party	Net Amount
There were no sales or purchases in 2014 - 2015					

Table 12 - Exchange Pool

Party	Adjudicated Rights	Required Offer (acre-feet)	Actual Offer (acre-feet)	Amount Sold (acre-feet)	Payment due Exchanger
There were no requests to purchase water, therefore, operation of the Exchange Pool Program was suspended					

Table 13 - Wells Completed

Party	Recordation No.	State Well No.	Owner Designation
Tesoro Refining & Marketing Co.	1930074	Not Assigned	SHE 15
Tesoro Refining & Marketing Co.	1930075	9S/99W-99A99S	14

Table 14 - Wells Destroyed

Party	Recordation No.	State Well No.	Owner Designation
There were no wells destroyed in 2014-2015			

## Table 15 - Replenishment Operations

Water spread in the Montebello forebay area of the West Coast Basin provides subsurface recharge to the West Coast Basin.

Source of Water	Quantity (acre-feet)	
	2013 - 2014	2014-2015
Local Runoff	0	13,384
Recycled water:		
Whittier Narrows Water Reclamation Plant	7,752	5,550
San Jose Water Reclamation Plant	43,874	37,675
Pomona Water Reclamation Plant	4,396	3,694
MWD untreated Tier 1 water purchased by WRD	0	18,515
Make-up water from Upper San Gabriel Basin	0	0
<b>Total</b>	<b>56,022</b>	<b>78,818</b>

## Table 16 - Water Replenishment District In-Lieu Recharge

Party	In-Lieu Amount (acre-feet)
Not administered this fiscal year	

Table 17 - Imported Water Use

Source of Water	Party	Quantity (acre-feet)	
		2013 - 2014	2014-2015
Colorado River and State Water Project	Long Beach, City of	30,563	40,145
Colorado River and State Water Project	<b>West Coast Basin Municipal Water District:</b>		
	California-American Water Company	667	238
	California Water Service Company <sup>1</sup>	10,966	10,098
	California Water Service Company (Dominguez)	27,871	26,735
	California Water Service Co. (Hawthorne Lease)	2,499	2,397
	El Segundo, City of	8,075	8,097
	Golden State Water Company	15,933	17,564
	Inglewood, City of	8,201	7,445
	Lomita, City of	1,788	1,463
	Manhattan Beach, City of	3,544	3,184
	<b>West Basin MWD Subtotal</b>	<b>79,544</b>	<b>77,722</b>
Colorado River and State Water Project	Torrance, City of	17,210	16,205
Owens River-Mono Basin, Colorado River, and State Water Project	Los Angeles, City of	33,398	30,101
Central Basin Groundwater	California-American Water Company	2,953	2,830
	<b>Total Imported Water</b>	<b>163,668</b>	<b>166,502</b>

<sup>1</sup> Excludes 19,138 acre-feet of imported water that was exported to Palos Verdes Hills in 2014 - 2015. Palos Verdes Hills is not in the Watermaster service area.

Table 18 - Recycled Water Use

Source of Water	Party	Quantity (acre-feet)	
		2013-2014	2014-2015
<b>West Basin Municipal Water District:</b>	California Water Service Company	167	147
	California Water Service Company (Hawthorne Lease)	118	99
	California Water Service Company (Dominguez)	6,246	5,699
	El Segundo, City of	8,606	9,290
	Golden State Water Company	583	464
	Inglewood, City of	827	728
	Los Angeles, City of	945	881
	Manhattan Beach, City of	305	313
	Torrance, City of	6,529	5,270
	<b>Total Recycled Water</b>	<b>24,326</b>	<b>22,891</b>

## Table 19 - Sea Water Intrusion Barrier Project Operations

Provisional data provided by the Los Angeles County Department of Public Works.

Barrier Project	Quantity (acre-feet)	
	2013-2014	2014-2015
West Coast Basin Barrier		
Imported water injection	5,826	3,958
Recycled water injection <sup>1</sup>	12,372	12,403
Dominguez Gap Barrier		3,851
Imported water injection	3,943	4,050
Recycled water injection <sup>2</sup>	3,711	
<b>Total</b>	<b>25,852</b>	<b>24,262</b>

<sup>1</sup> Recycled water purchased from West Basin Municipal Water District

<sup>2</sup> Recycled water purchased from City of Los Angeles

Table 20 - Income and Expenditures

<b>Income</b>	
Billing amount from 2014-2015	261,000
Balance from 2013-2014	46,938
Budget penalties and uncollected amount for 2014-2015	3,412
Unpaid	-83
<b>Total Income</b>	<b>\$311,267</b>
<b>Expenditures</b>	
Budget and billing	7,836
Annual report	45,470
Production and posting	8,423
Basic data (leases, parties)	22,627
Meter testing, inspection, and investigation	29,603
Engineering assistance	127,925
Exchange pool	0
Conjunctive use	75
Equipment and maintenance	1,532
Training	6,087
Water level measurement and calculations	32,123
Attorney General services	28,479
<b>Total Expenditures</b>	<b>\$310,178</b>
<b>Balance</b>	<b>\$1,089</b>

<b>Non-consumptive water use permit (NCWUP): Montrose Chemical Corporation</b>	
Income	\$20,000 <sup>2</sup>
Expenditures 2011-2012	\$5,533
Expenditures 2012-2013	\$537
Expenditures 2013-2014	\$0
Expenditures 2014-2015	\$2,296 <sup>3</sup>
<b>Balance</b>	<b>\$11,633</b>

<sup>1</sup> Carryover or deficit to parties in fiscal year 2015-2016, subject to delayed charges or credits.

<sup>2</sup> Party was charged a fee of \$20,000 to cover the processing of the permit. Any remaining balance will be returned to the party.

<sup>3</sup> Carryover towards Montrose Chemical Corporation NCWUP into 2015-2016 fiscal year.

Table 21 - Approved Budget

Total 2014-2015 budget payable by parties	\$259,000
Estimated carryover from previous year (+) deficit, (-) credit	\$2,000
<b>Total amount billed</b>	<b>\$261,000</b>

Table 22 - Apportionment of Budget among Parties

Party	Adjudicated Right (acre-feet)	Total Amount Billed (dollars)	Amount Paid (dollars)
A B C Nursery, Inc	24.10	100.48	100.48
Aqua Capital Management LP	11.80	49.20	49.20
California Water Service Company	4,070.00	16,968.62	17,817.05 <sup>1</sup>
California Water Service Company (Dominguez)	10,417.45	43,432.36	45,603.98 <sup>1</sup>
Carson-Harbor Village Mobile Home Park	7.00	29.18	29.18
Chandler's Palos Verdes Sand and Gravel Co.	294.20	1,226.58	1,226.58
Chevron USA, Inc.	4,601.30	19,183.71	19,183.71
El Segundo, City of	953.00	3,973.24	3,973.24
Engelsma, Susan Trust	12.10	50.45	50.45
Fujimoto, S.R., S.T., & J.K.	20.00	83.38	0.00 <sup>2</sup>
Golden State Water Company	7,502.24	31,278.29	31,278.29
Hawthorne, City of	1,882.00	7,846.42	8,238.741
Hillside Memorial Park	92.30	384.82	384.82
Hollywood Park Land Company, LLC	282.00	1,175.71	1,175.71
Inglewood, City of	4,449.89	18,552.45	18,552.45
Kinder Morgan Liquids Terminals, LLC	167.00	696.26	696.26
Los Angeles County Recreation Facilities	363.70	1,516.34	1,516.34
Los Angeles County Sanitation District 2	102.00	425.26	425.26
Lomita, City of Water System	1,352.00	5,636.75	5,636.75



Table 22 - Apportionment of Budget among Parties

Party	Adjudicated Right (acre-feet)	Total Amount Billed (dollars)	Amount Paid (dollars)
Manhattan Beach, City of	1,131.20	4,716.19	4,716.19
Mobil Oil Corporation	2,596.40	10,824.89	10,824.89
Montrose Chemical Corporation of California	1.20	5.00	5.00
Pacific Crest Cemetery Company	39.40	164.27	164.27
Phillips 66 Company	6,170.00	25,723.92	25,723.92
Solvay USA Inc.	521.00	2,172.15	2,172.15
Roman Catholic Archbishop of Los Angeles	72.30	301.43	301.43
Shell Oil Company	1,019.50	4,250.49	4,250.49
Southern California Edison Company	57.10	238.06	238.06
Tesoro Refining and Marketing Company	8,741.00	36,442.92	36,442.92
Torrance, City of	5,638.86	23,509.50	23,509.50
Vukelich, Mike Jr.	10.00	41.69	41.69
<p><sup>1</sup> Includes a late fee; total of all late fees collected was \$3,412.37.  <sup>2</sup> Unpaid. Party non-responsive. Property abandoned.</p>			
<b>Total</b>	<b>62,602.04</b>	<b>261,000.01</b>	<b>264,329.00</b>

Figure 1 - West Coast Basin  
(showing groundwater production wells)

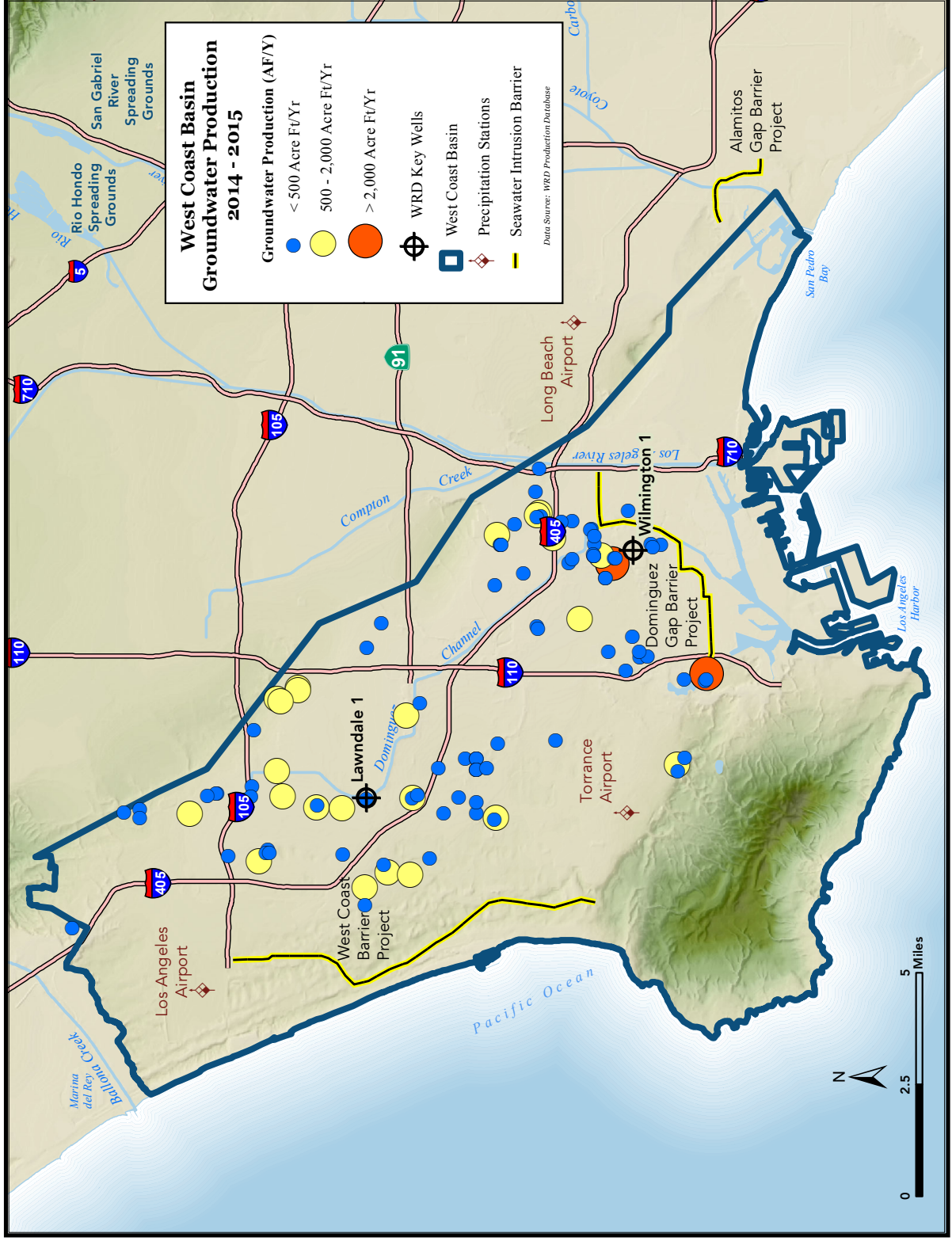


Figure 2 - West Coast Basin (showing key wells and facilities)

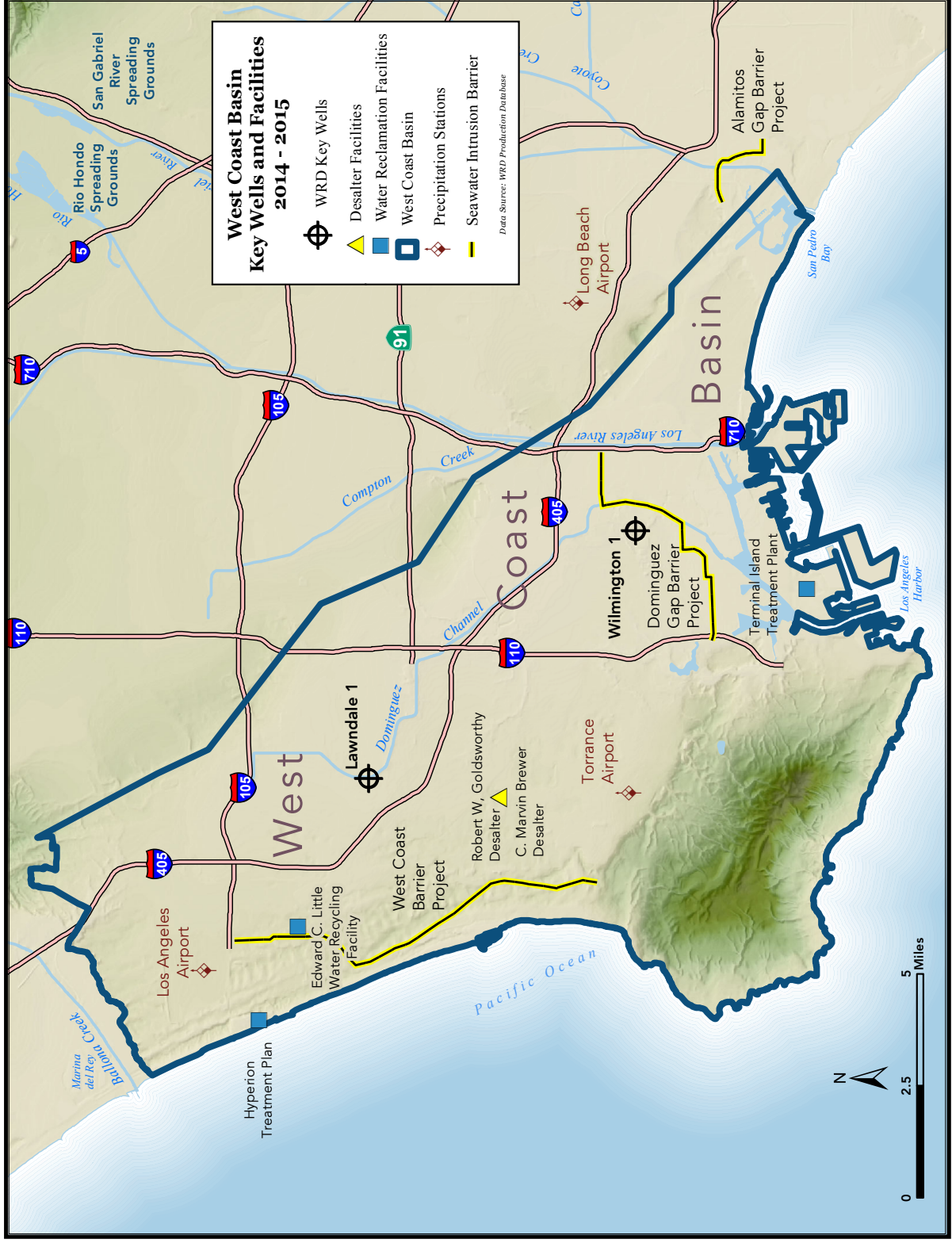


Figure 3 - Monthly Rainfall and Water Use

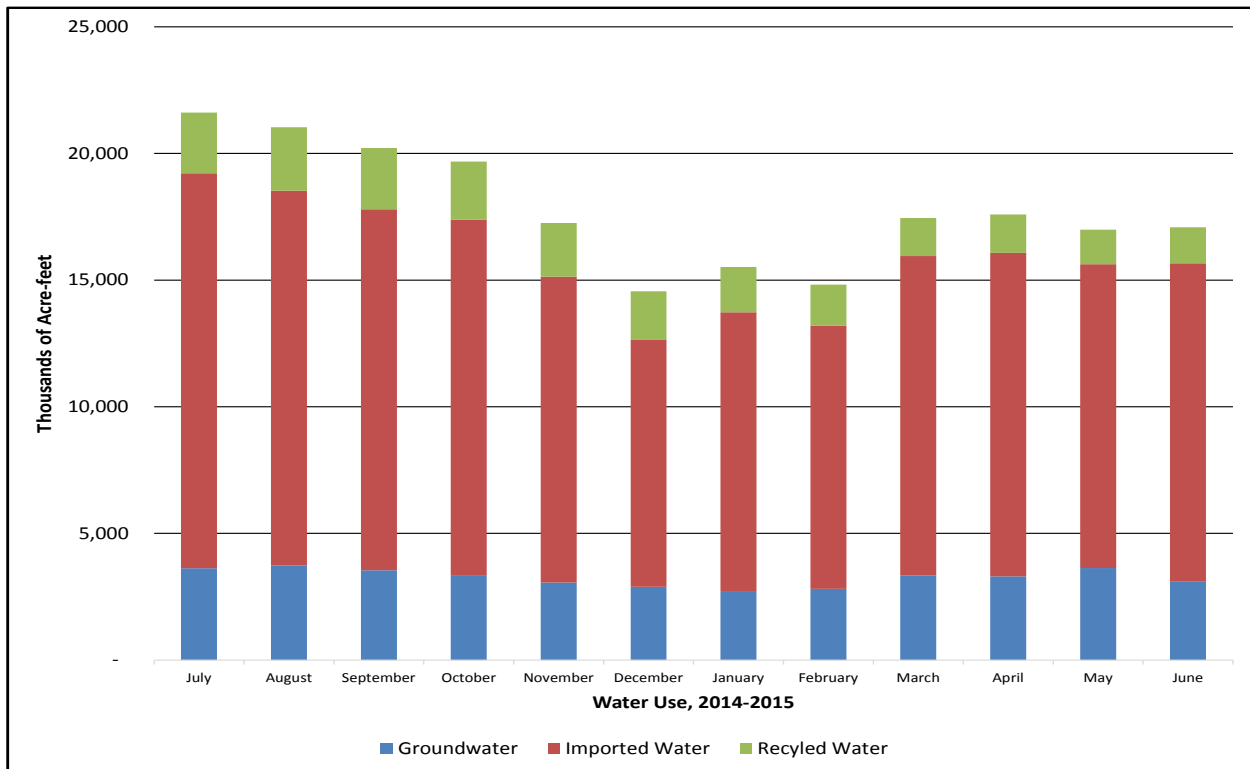
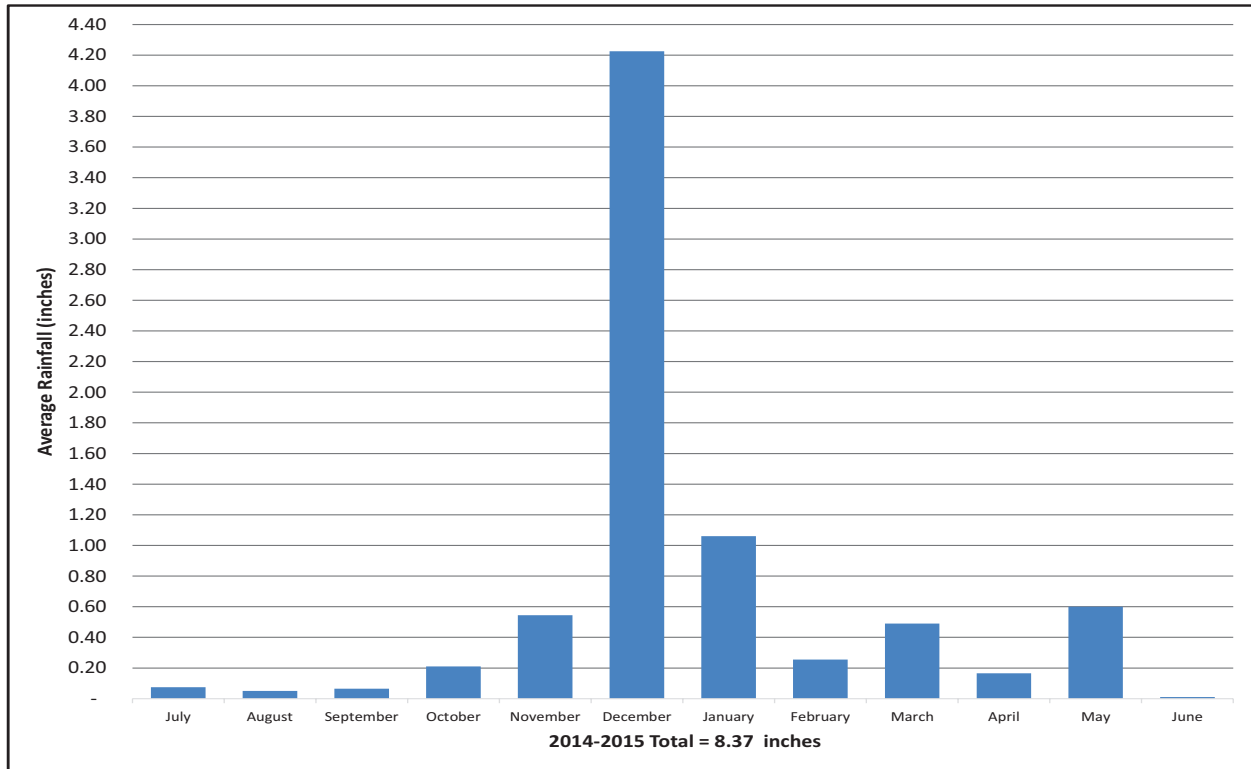
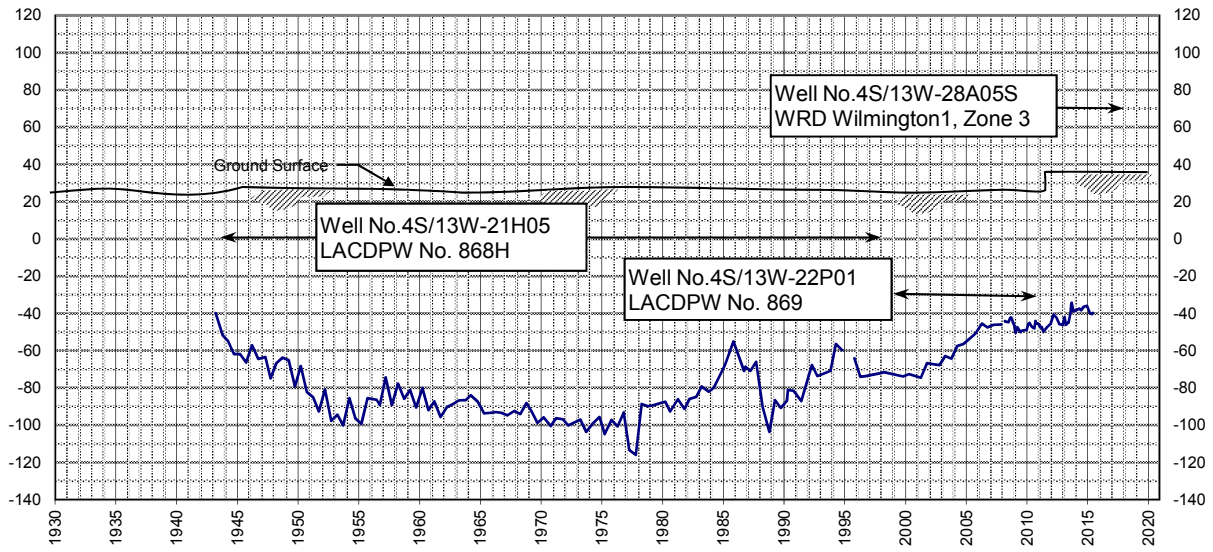


Figure 4 - Key Well Hydrograph - Wilmington 1



# Appendix A

## Groundwater Extractions

Table 23 - Groundwater Extractions (acre-feet)

Party No-Party/SWN/Owner No.	JUL	AUG	SEPT	OCT	NOV	DEC	JAN	FEB	MAR	APR	MAY	JUN	TOTAL
<b>7053 - Cal. Water Service Dom.</b>	<b>396.97</b>	<b>364.72</b>	<b>337.30</b>	<b>250.71</b>	<b>289.42</b>	<b>326.05</b>	<b>294.07</b>	<b>270.24</b>	<b>223.77</b>	<b>321.89</b>	<b>428.06</b>	<b>412.50</b>	<b>3,915.70</b>
004S013W11P002S/294-01	0.00	0.00	0.00	0.00	0.00	0.00	0.00	0.00	0.00	10.62	3.44	39.13	53.19
004S013W15A006S/RCOMP	0.00	0.00	0.00	0.00	0.00	0.00	0.00	0.00	0.00	0.00	0.00	0.00	0.00
004S013W15A011S/215-01	82.51	79.66	83.02	90.44	78.62	61.53	81.47	73.82	86.54	76.63	81.65	82.11	958.00
004S013W15A014S/298-01	130.80	123.77	87.94	7.04	78.74	124.98	67.80	73.61	2.08	0.00	0.00	0.00	696.76
004S013W15B005S/215-02	0.00	0.00	0.00	0.00	0.00	0.00	0.00	0.00	0.00	0.00	0.00	0.00	0.00
004S013W15F001S/277-01	71.30	71.64	72.40	74.97	60.91	71.23	74.17	63.22	72.01	71.22	44.56	112.35	859.98
004S013W17D002S/219-01	0.00	0.00	0.00	0.00	0.00	0.00	0.00	0.00	0.00	0.00	0.00	0.00	0.00
004S013W17D003S/219-02	0.00	0.00	0.00	0.00	0.00	0.00	0.00	0.00	0.00	0.00	0.00	0.00	0.00
004S013W20C001S/279-01	112.36	89.65	93.94	78.26	71.15	68.31	70.63	59.59	63.14	57.82	57.09	50.99	872.93
004S013W29E006S/275-01	0.00	0.00	0.00	0.00	0.00	0.00	0.00	0.00	0.00	105.60	241.32	127.92	474.84

Party No-Party/SWN/Owner No.	JUL	AUG	SEPT	OCT	NOV	DEC	JAN	FEB	MAR	APR	MAY	JUN	TOTAL
<b>7052 - California Water Service Co./Hawthorne Lease</b>	<b>148.47</b>	<b>174.61</b>	<b>169.40</b>	<b>173.24</b>	<b>168.25</b>	<b>141.57</b>	<b>165.60</b>	<b>152.27</b>	<b>149.51</b>	<b>152.40</b>	<b>161.15</b>	<b>155.91</b>	<b>1,912.38</b>
003S014W09M001S/13	148.47	174.61	169.40	173.24	168.25	141.57	165.60	152.27	149.51	152.40	161.15	155.91	1,912.38
003S014W09N004S/4	0.00	0.00	0.00	0.00	0.00	0.00	0.00	0.00	0.00	0.00	0.00	0.00	0.00
003S014W09N005S/12	0.00	0.00	0.00	0.00	0.00	0.00	0.00	0.00	0.00	0.00	0.00	0.00	0.00
003S014W09P001S/8	0.00	0.00	0.00	0.00	0.00	0.00	0.00	0.00	0.00	0.00	0.00	0.00	0.00

Party No-Party/SWN/Owner No.	JUL	AUG	SEPT	OCT	NOV	DEC	JAN	FEB	MAR	APR	MAY	JUN	TOTAL
<b>7050 - California Water Service Company</b>	<b>179.44</b>	<b>181.52</b>	<b>156.21</b>	<b>172.46</b>	<b>159.25</b>	<b>155.72</b>	<b>157.91</b>	<b>137.20</b>	<b>155.45</b>	<b>155.03</b>	<b>150.52</b>	<b>135.43</b>	<b>1,896.14</b>
003S014W29H001S/30-01	0.00	3.81	0.00	0.00	0.00	0.00	0.00	0.00	0.00	0.00	0.00	0.77	4.58
003S014W29J001S/22-01	101.80	98.47	82.34	95.20	92.64	94.17	93.48	83.54	93.62	88.99	85.93	76.60	1,086.78
003S014W32A002S/08-02	77.64	79.24	73.87	77.26	66.61	61.55	64.43	53.66	61.83	66.04	64.59	58.06	804.78



Table 3 - Groundwater Extractions Continued

Party No-Party/SWN/Owner No.	JUL	AUG	SEPT	OCT	NOV	DEC	JAN	FEB	MAR	APR	MAY	JUN	TOTAL
<b>7080 - Chandler Palos Verdes Sand &amp; Gravel Company</b>	<b>36.00</b>	<b>35.00</b>	<b>40.00</b>	<b>8.00</b>	<b>14.00</b>	<b>4.00</b>	<b>6.00</b>	<b>9.00</b>	<b>6.00</b>	<b>20.00</b>	<b>18.00</b>	<b>24.00</b>	<b>220.00</b>
004S014W35E006S/2	36.00	35.00	40.00	8.00	14.00	4.00	6.00	9.00	6.00	20.00	18.00	24.00	220.00
004S014W35F002S/PLANT	0.00	0.00	0.00	0.00	0.00	0.00	0.00	0.00	0.00	0.00	0.00	0.00	0.00

Party No-Party/SWN/Owner No.	JUL	AUG	SEPT	OCT	NOV	DEC	JAN	FEB	MAR	APR	MAY	JUN	TOTAL
<b>7093 - ConocoPhillips Company</b>	<b>493.04</b>	<b>498.09</b>	<b>471.29</b>	<b>522.89</b>	<b>491.58</b>	<b>455.23</b>	<b>445.66</b>	<b>424.03</b>	<b>517.38</b>	<b>459.89</b>	<b>464.75</b>	<b>400.16</b>	<b>5,643.99</b>
004S013W21J003S/5	266.81	266.87	228.57	269.97	241.42	253.77	238.44	229.01	267.72	216.76	222.07	228.11	2,929.52
004S013W21R001S/W1002	0.00	0.00	0.00	0.00	0.00	0.00	0.00	0.00	0.00	0.00	0.00	0.00	0.00
004S013W21R010S/W-4	0.00	0.00	0.00	0.00	0.00	0.00	0.00	0.00	0.00	0.00	0.00	0.00	0.00
004S013W31N003S/LA005	0.00	0.00	0.00	0.00	0.00	0.00	0.00	0.00	0.00	0.00	0.00	0.00	0.00
004S013W31N004S/LA006	0.75	0.81	0.27	0.96	1.02	0.67	0.50	1.22	4.23	1.19	5.76	6.08	23.46
004S013W31P003S/7	225.48	230.41	242.45	251.96	249.14	200.79	206.72	193.80	245.43	241.94	236.92	165.97	2,691.01

Party No-Party/SWN/Owner No.	JUL	AUG	SEPT	OCT	NOV	DEC	JAN	FEB	MAR	APR	MAY	JUN	TOTAL
<b>7623 - Eco Services Operations LLC</b>	<b>41.69</b>	<b>49.51</b>	<b>51.45</b>	<b>40.80</b>	<b>28.89</b>	<b>52.43</b>	<b>51.33</b>	<b>45.82</b>	<b>51.39</b>	<b>49.39</b>	<b>46.11</b>	<b>43.70</b>	<b>552.51</b>
004S013W10C004S/	41.69	49.51	51.45	40.80	28.89	52.43	51.33	45.82	51.39	49.39	46.11	43.70	552.51

Party No-Party/SWN/Owner No.	JUL	AUG	SEPT	OCT	NOV	DEC	JAN	FEB	MAR	APR	MAY	JUN	TOTAL
<b>7510 - ExxonMobil Oil Corporation</b>	<b>21.63</b>	<b>79.39</b>	<b>117.24</b>	<b>117.42</b>	<b>115.04</b>	<b>100.88</b>	<b>107.96</b>	<b>112.30</b>	<b>115.33</b>	<b>121.49</b>	<b>127.05</b>	<b>124.83</b>	<b>1,260.56</b>
/EW-6	0.00	0.00	0.00	0.00	0.00	0.00	0.00	0.00	0.00	0.00	0.00	0.00	0.00
004S014W02F001S/EW-5	0.00	0.00	0.00	0.00	0.00	0.00	0.00	0.00	0.00	0.00	0.00	0.00	0.00
004S014W02L001S/EW-2	8.58	20.02	30.64	34.74	29.00	25.23	30.90	27.05	22.33	21.10	25.17	26.35	301.11
004S014W02L002S/EW-3	3.18	17.29	20.72	5.18	18.73	14.57	0.00	13.37	20.33	31.65	30.98	30.23	206.23
004S014W02L003S/EW-4	3.09	10.07	18.65	28.59	30.21	29.50	30.13	27.18	29.17	28.37	28.64	28.42	292.02
004S014W02L003S/EW-4	0.71	4.30	15.63	15.64	6.07	0.00	13.99	16.04	13.40	13.33	14.40	14.24	127.75



Table 3 - Groundwater Extractions Continued

Party No-Party/SWN/Owner No.	JUL	AUG	SEPT	OCT	NOV	DEC	JAN	FEB	MAR	APR	MAY	JUN	TOTAL
<b>7510 - ExxonMobil Oil Corporation</b>	<b>21.63</b>	<b>79.39</b>	<b>117.24</b>	<b>117.42</b>	<b>115.04</b>	<b>100.88</b>	<b>107.96</b>	<b>112.30</b>	<b>115.33</b>	<b>121.49</b>	<b>127.05</b>	<b>124.83</b>	<b>1,260.56</b>
004S014W02M001S/RW-1	0.00	0.00	0.00	0.00	0.00	0.00	0.00	0.00	0.00	0.00	0.00	0.00	0.00
004S014W02M002S/RW-2	0.00	0.00	0.00	0.00	0.00	0.00	0.00	0.00	0.00	0.00	0.00	0.00	0.00
004S014W02M003S/RW-3	0.00	0.00	0.00	0.00	0.00	0.00	0.00	0.00	0.00	0.00	0.00	0.00	0.00
004S014W02M004S/EW-1	6.07	27.71	31.60	33.27	31.03	31.58	32.94	28.66	30.10	27.04	27.86	25.59	333.45
004S014W02N001S/	0.00	0.00	0.00	0.00	0.00	0.00	0.00	0.00	0.00	0.00	0.00	0.00	0.00
004S014W03F001S/M-07	0.00	0.00	0.00	0.00	0.00	0.00	0.00	0.00	0.00	0.00	0.00	0.00	0.00
004S014W03L007S/T0010	0.00	0.00	0.00	0.00	0.00	0.00	0.00	0.00	0.00	0.00	0.00	0.00	0.00
004S014W03M001S/M-06	0.00	0.00	0.00	0.00	0.00	0.00	0.00	0.00	0.00	0.00	0.00	0.00	0.00

Party No-Party/SWN/Owner No.	JUL	AUG	SEPT	OCT	NOV	DEC	JAN	FEB	MAR	APR	MAY	JUN	TOTAL
<b>7226 - Golden St. Water Company</b>	<b>1,165.32</b>	<b>1,123.03</b>	<b>1,083.03</b>	<b>1,090.97</b>	<b>921.63</b>	<b>948.78</b>	<b>987.73</b>	<b>824.14</b>	<b>979.39</b>	<b>942.27</b>	<b>965.72</b>	<b>1,170.61</b>	<b>11,490.7</b>
003S014W02Q001S/TR004	0.00	0.00	0.00	0.00	0.00	0.00	0.00	0.00	0.00	0.00	0.00	0.00	0.00
003S014W03K004S/YU005	87.63	81.37	74.07	73.04	14.30	0.00	0.00	0.00	0.00	0.00	0.00	0.00	330.41
003S014W03K005S/YU004	83.82	80.19	74.57	73.62	14.08	0.00	0.00	0.00	0.00	0.00	0.00	0.00	326.28
003S014W13B003S/BA004	73.92	75.45	72.39	74.49	70.98	68.14	67.93	61.94	67.36	62.18	65.68	8.61	769.07
003S014W13B004S/BA005	23.60	0.00	0.00	0.00	0.00	55.02	112.37	103.39	112.91	106.53	114.14	14.86	642.82
003S014W13T009S/S0005	122.74	124.15	119.53	123.24	118.08	117.63	88.06	31.55	121.26	111.63	122.14	15.75	1,215.76
003S014W13T010S/S0006	136.68	137.74	132.79	135.52	124.98	132.67	131.01	122.42	130.54	123.87	131.01	16.76	1,455.99
003S014W14D002S/I29-02	148.41	148.31	142.67	145.72	136.96	142.86	142.26	130.99	144.11	137.89	140.81	18.56	1,579.55
003S014W15B003S/Goldmedal #1	112.27	110.92	107.69	109.13	99.34	107.60	108.93	100.47	100.42	107.11	103.02	11.39	1,178.29
003S014W15P001S/Doty1	64.53	62.59	57.79	56.09	50.52	47.81	38.75	0.00	0.00	0.00	0.00	0.78	378.86
003S014W15P002S/Doty2	127.55	120.22	124.37	119.11	121.47	118.23	122.01	111.90	125.26	124.33	126.94	17.39	1,358.78
003S014W21M001S/CH001	0.00	0.00	0.00	0.00	0.00	0.00	0.00	0.00	0.00	0.00	0.00	0.00	0.00
003S014W22L001S/CD001	79.65	78.24	76.40	77.19	74.54	58.83	75.46	68.96	75.11	71.59	59.83	0.00	795.80
003S014W25P004S/DA001	104.52	103.85	100.76	103.82	96.38	99.99	100.95	92.52	102.42	97.14	102.15	12.96	1,117.46

Table 3 - Groundwater Extractions Continued

Party No.-Party/SWN/Owner No.	JUL	AUG	SEPT	OCT	NOV	DEC	JAN	FEB	MAR	APR	MAY	JUN	TOTAL
<b>7270 - Hillside Memorial Park</b>	<b>16.27</b>	<b>17.62</b>	<b>12.62</b>	<b>9.67</b>	<b>4.68</b>	<b>1.27</b>	<b>1.39</b>	<b>3.16</b>	<b>7.89</b>	<b>13.32</b>	<b>14.49</b>	<b>10.80</b>	<b>113.18</b>
002S014W19K004S/3	16.27	17.62	12.62	9.67	4.68	1.27	1.39	3.16	7.89	13.32	14.49	10.80	113.18
<b>Party No.-Party/SWN/Owner No.</b>	<b>JUL</b>	<b>AUG</b>	<b>SEPT</b>	<b>OCT</b>	<b>NOV</b>	<b>DEC</b>	<b>JAN</b>	<b>FEB</b>	<b>MAR</b>	<b>APR</b>	<b>MAY</b>	<b>JUN</b>	<b>TOTAL</b>
<b>7310 - Inglewood, City of</b>	<b>156.66</b>	<b>177.89</b>	<b>157.45</b>	<b>168.20</b>	<b>176.33</b>	<b>150.35</b>	<b>20.15</b>	<b>146.77</b>	<b>190.64</b>	<b>163.22</b>	<b>157.88</b>	<b>143.18</b>	<b>1,808.72</b>
003S014W03D003S/6	128.90	126.30	115.11	115.57	122.21	128.36	17.62	115.59	134.91	129.37	127.29	124.81	1,386.04
003S014W03F002S/5	0.10	0.10	0.10	0.10	0.10	0.10	0.10	0.10	0.10	0.10	0.00	0.00	1.00
003S014W10F002S/4	17.64	17.34	14.39	18.10	18.26	18.35	2.43	16.35	20.26	17.89	14.98	18.37	194.36
003S014W10G003S/1	0.00	0.00	0.01	0.00	0.00	0.00	0.00	0.00	0.00	0.00	0.00	0.00	0.01
003S014W10G004S/2	10.02	34.15	27.84	34.43	35.76	3.54	0.00	14.73	35.37	15.86	15.61	0.00	227.31
<b>Party No.-Party/SWN/Owner No.</b>	<b>JUL</b>	<b>AUG</b>	<b>SEPT</b>	<b>OCT</b>	<b>NOV</b>	<b>DEC</b>	<b>JAN</b>	<b>FEB</b>	<b>MAR</b>	<b>APR</b>	<b>MAY</b>	<b>JUN</b>	<b>TOTAL</b>
<b>7364 - Kinder Morgan Liquids Terminals LLC</b>	<b>1.35</b>	<b>2.65</b>	<b>2.55</b>	<b>2.87</b>	<b>3.36</b>	<b>3.12</b>	<b>3.99</b>	<b>3.88</b>	<b>3.98</b>	<b>1.51</b>	<b>4.87</b>	<b>3.56</b>	<b>37.69</b>
9S99W99A99S/	1.35	2.65	2.55	2.87	3.36	3.12	3.99	3.88	3.98	1.51	4.87	3.56	37.69
<b>Party No.-Party/SWN/Owner No.</b>	<b>JUL</b>	<b>AUG</b>	<b>SEPT</b>	<b>OCT</b>	<b>NOV</b>	<b>DEC</b>	<b>JAN</b>	<b>FEB</b>	<b>MAR</b>	<b>APR</b>	<b>MAY</b>	<b>JUN</b>	<b>TOTAL</b>
<b>7435 - L.A. County Department of Parks &amp; Recreation</b>	<b>57.81</b>	<b>63.71</b>	<b>42.77</b>	<b>38.54</b>	<b>25.00</b>	<b>3.85</b>	<b>8.03</b>	<b>13.71</b>	<b>36.57</b>	<b>44.86</b>	<b>41.67</b>	<b>51.64</b>	<b>428.16</b>
003S014W11J002S/1397C	0.00	0.00	0.00	0.00	0.00	0.00	0.00	0.00	0.00	0.00	0.00	0.00	0.00
003S014W27C001S/00761	57.81	63.71	42.77	38.54	25.00	3.85	8.03	13.71	36.57	44.86	41.67	51.64	428.16
<b>Party No.-Party/SWN/Owner No.</b>	<b>JUL</b>	<b>AUG</b>	<b>SEPT</b>	<b>OCT</b>	<b>NOV</b>	<b>DEC</b>	<b>JAN</b>	<b>FEB</b>	<b>MAR</b>	<b>APR</b>	<b>MAY</b>	<b>JUN</b>	<b>TOTAL</b>
<b>7450 - Lomita, City of</b>	<b>61.41</b>	<b>60.01</b>	<b>62.56</b>	<b>51.26</b>	<b>59.03</b>	<b>52.01</b>	<b>61.11</b>	<b>56.55</b>	<b>64.55</b>	<b>54.96</b>	<b>48.58</b>	<b>55.69</b>	<b>687.72</b>
004S014W35E007S/5	61.41	60.01	62.56	51.26	59.03	52.01	61.11	56.55	64.55	54.96	48.58	55.69	687.72

Table 3 - Groundwater Extractions Continued

Party No-Party/SWN/Owner No.	JUL	AUG	SEPT	OCT	NOV	DEC	JAN	FEB	MAR	APR	MAY	JUN	TOTAL
<b>7490 - Manhattan Beach, City of</b>	<b>54.74</b>	<b>125.03</b>	<b>172.51</b>	<b>212.25</b>	<b>191.11</b>	<b>125.91</b>	<b>157.28</b>	<b>165.14</b>	<b>235.22</b>	<b>183.95</b>	<b>97.81</b>	<b>163.34</b>	<b>1,884.29</b>
003S014W29C003S/15	54.74	125.03	172.51	212.25	191.11	125.91	157.28	165.14	160.03	183.95	97.81	163.34	<b>1,809.10</b>
003S014W29D005S/11A	0.00	0.00	0.00	0.00	0.00	0.00	0.00	0.00	75.19	0.00	0.00	0.00	<b>75.19</b>

Party No-Party/SWN/Owner No.	JUL	AUG	SEPT	OCT	NOV	DEC	JAN	FEB	MAR	APR	MAY	JUN	TOTAL
<b>7514 - Montrose Chemical Corporation of California</b>	<b>0.44</b>	<b>0.94</b>	<b>1.14</b>	<b>1.69</b>	<b>0.06</b>	<b>0.20</b>	<b>0.00</b>	<b>0.16</b>	<b>0.09</b>	<b>0.00</b>	<b>0.00</b>	<b>0.00</b>	<b>4.72</b>
.	0.00	0.00	0.00	0.00	0.00	0.00	0.00	0.00	0.00	0.00	0.00	0.00	<b>0.00</b>
.	0.00	0.00	0.00	0.00	0.01	0.02	0.00	0.02	0.01	0.00	0.00	0.00	<b>0.06</b>
.	0.00	0.00	0.00	0.00	0.01	0.04	0.00	0.03	0.01	0.00	0.00	0.00	<b>0.03</b>
4S14W12B02S/--	0.44	0.94	1.14	1.69	0.01	0.00	0.00	0.00	0.00	0.00	0.00	0.00	<b>0.00</b>
.	0.00	0.00	0.00	0.00	0.00	0.00	0.00	0.00	0.00	0.00	0.00	0.00	<b>0.00</b>
.	0.00	0.00	0.00	0.00	0.00	0.00	0.00	0.00	0.00	0.00	0.00	0.00	<b>0.00</b>
.	0.00	0.00	0.00	0.00	0.00	0.00	0.00	0.00	0.00	0.00	0.00	0.00	<b>0.00</b>
.	0.00	0.00	0.00	0.00	0.00	0.00	0.00	0.00	0.00	0.00	0.00	0.00	<b>0.01</b>
.	0.00	0.00	0.00	0.00	0.01	0.02	0.00	0.02	0.01	0.00	0.00	0.00	<b>0.07</b>
.	0.00	0.00	0.00	0.00	0.00	0.01	0.00	0.01	0.01	0.00	0.00	0.00	<b>0.00</b>
.	0.00	0.00	0.00	0.00	0.00	0.00	0.00	0.00	0.00	0.00	0.00	0.00	<b>0.00</b>
.	0.00	0.00	0.00	0.00	0.00	0.00	0.00	0.00	0.00	0.00	0.00	0.00	<b>0.00</b>
.	0.00	0.00	0.00	0.00	0.00	0.00	0.00	0.00	0.00	0.00	0.00	0.00	<b>0.00</b>
.	0.00	0.00	0.00	0.00	0.00	0.00	0.00	0.00	0.00	0.00	0.00	0.00	<b>0.00</b>
.	0.00	0.00	0.00	0.00	0.00	0.00	0.00	0.00	0.00	0.00	0.00	0.00	<b>0.00</b>
.	0.00	0.00	0.00	0.00	0.00	0.00	0.00	0.00	0.00	0.00	0.00	0.00	<b>0.00</b>
.	0.00	0.00	0.00	0.00	0.00	0.00	0.00	0.00	0.00	0.00	0.00	0.00	<b>0.02</b>
.	0.00	0.00	0.00	0.00	0.00	0.00	0.00	0.00	0.00	0.00	0.00	0.00	<b>0.00</b>
.	0.00	0.00	0.00	0.00	0.00	0.00	0.00	0.00	0.00	0.00	0.00	0.00	<b>0.00</b>
.	0.01	0.04	0.03	0.02	0.00	0.00	0.00	0.00	0.00	0.00	0.00	0.00	<b>0.03</b>
.	0.00	0.01	0.01	0.01	0.00	0.01	0.00	0.01	0.01	0.00	0.00	0.00	<b>0.00</b>

Table 3 - Groundwater Extractions Continued

Party No-Party/SWN/Owner No.	JUL	AUG	SEPT	OCT	NOV	DEC	JAN	FEB	MAR	APR	MAY	JUN	TOTAL
<b>7514 - Montrose Chemical Corporation of California</b>	<b>0.44</b>	<b>0.94</b>	<b>1.14</b>	<b>1.69</b>	<b>0.06</b>	<b>0.20</b>	<b>0.00</b>	<b>0.16</b>	<b>0.09</b>	<b>0.00</b>	<b>0.00</b>	<b>0.00</b>	<b>4.72</b>
					0.01	0.04	0.00	0.03	0.02	0.00	0.00	0.00	<b>0.00</b>
					0.00	0.01	0.00	0.01	0.01	0.00	0.00	0.00	<b>0.00</b>
					0.00	0.01	0.00	0.01	0.01	0.00	0.00	0.00	<b>0.06</b>
					0.01	0.03	0.00	0.02	0.01	0.00	0.00	0.00	<b>0.10</b>
					0.00	0.00	0.00	0.00	0.00	0.00	0.00	0.00	<b>0.00</b>
					0.00	0.01	0.00	0.00	0.00	0.00	0.00	0.00	<b>4.22</b>

Party No-Party/SWN/Owner No.	JUL	AUG	SEPT	OCT	NOV	DEC	JAN	FEB	MAR	APR	MAY	JUN	TOTAL
<b>7533 - Myron Z. Chalavin &amp; Nettie Dresser Trust &amp; JHD Pr.</b>	<b>0.13</b>	<b>0.17</b>	<b>0.20</b>	<b>0.34</b>	<b>0.29</b>	<b>0.14</b>	<b>0.04</b>	<b>0.00</b>	<b>0.00</b>	<b>0.01</b>	<b>0.12</b>	<b>0.16</b>	<b>1.60</b>
004S013W15Q001S/878H													<b>1.60</b>

Party No-Party/SWN/Owner No.	JUL	AUG	SEPT	OCT	NOV	DEC	JAN	FEB	MAR	APR	MAY	JUN	TOTAL
<b>7580 - Pacific Crest Cemetary Company</b>	<b>4.47</b>	<b>12.46</b>	<b>6.65</b>	<b>5.26</b>	<b>4.33</b>	<b>0.26</b>	<b>6.66</b>	<b>0.39</b>	<b>2.99</b>	<b>3.74</b>	<b>4.47</b>	<b>6.08</b>	<b>57.76</b>
003S014W33E001S/7Z 83	4.47	12.46	6.65	5.26	4.33	0.26	6.66	0.39	2.99	3.74	4.47	6.08	<b>57.76</b>

Party No-Party/SWN/Owner No.	JUL	AUG	SEPT	OCT	NOV	DEC	JAN	FEB	MAR	APR	MAY	JUN	TOTAL
<b>7659 - Roman Catholic Archbishop of L.A.</b>	<b>39.99</b>	<b>40.44</b>	<b>40.21</b>	<b>32.95</b>	<b>12.20</b>	<b>2.10</b>	<b>1.59</b>	<b>6.28</b>	<b>11.93</b>	<b>23.33</b>	<b>17.75</b>	<b>26.16</b>	<b>254.93</b>
002S014W18J001S/3	33.55	37.67	38.41	31.09	7.21	1.97	0.27	0.00	0.00	0.00	0.00	0.00	<b>150.17</b>
002S014W18Q001S/OLY0	1.89	2.41	1.75	1.71	0.97	0.09	0.16	0.60	1.07	2.70	2.56	2.29	<b>18.20</b>
002S014W18Q002S/HOLY1	4.55	0.36	0.05	0.15	4.02	0.04	1.16	5.68	10.86	20.63	15.19	23.87	<b>86.56</b>

Table 3 - Groundwater Extractions Continued

Party No-Party/SWN/Owner No.	JUL	AUG	SEPT	OCT	NOV	DEC	JAN	FEB	MAR	APR	MAY	JUN	TOTAL
<b>7701 - Shell Oil Co NCWUP</b>	<b>7.50</b>	<b>7.02</b>	<b>7.86</b>	<b>7.17</b>	<b>6.39</b>	<b>8.55</b>	<b>7.32</b>	<b>6.57</b>	<b>8.40</b>	<b>7.86</b>	<b>7.53</b>	<b>7.98</b>	<b>90.15</b>
004S013W09D001S/DR-7	0.00	0.00	0.00	0.00	0.00	0.00	0.00	0.00	0.00	0.00	0.00	0.00	0.00
004S013W09P001S/DR-18	0.00	0.00	0.00	0.00	0.00	0.00	0.00	0.00	0.00	0.00	0.00	0.00	0.00
004S013W10E005S/R-122	2.50	2.34	2.62	2.39	2.13	2.85	2.44	2.19	2.80	2.62	2.51	2.66	30.05
004S013W10E006S/R-123	2.50	2.34	2.62	2.39	2.13	2.85	2.44	2.19	2.80	2.62	2.51	2.66	30.05
004S013W10E007S/DD-3	2.50	2.34	2.62	2.39	2.13	2.85	2.44	2.19	2.80	2.62	2.51	2.66	30.05
004S013W10K002S/00022	0.00	0.00	0.00	0.00	0.00	0.00	0.00	0.00	0.00	0.00	0.00	0.00	0.00

Party No-Party/SWN/Owner No.	JUL	AUG	SEPT	OCT	NOV	DEC	JAN	FEB	MAR	APR	MAY	JUN	TOTAL
<b>7720 - Southern California Edison Co.</b>	<b>1.94</b>	<b>0.92</b>	<b>1.33</b>	<b>1.59</b>	<b>1.13</b>	<b>0.50</b>	<b>0.45</b>	<b>0.64</b>	<b>1.62</b>	<b>2.25</b>	<b>1.15</b>	<b>3.16</b>	<b>16.68</b>
003S014W34B002S/FRESA	0.00	0.00	0.00	0.00	0.00	0.00	0.00	0.00	0.00	0.00	0.00	0.00	0.00
003S014W34N004S/SCECO	1.94	0.92	1.33	1.59	1.13	0.50	0.45	0.64	1.62	2.25	1.15	3.16	16.68
004S013W14A007S/MORR1	0.00	0.00	0.00	0.00	0.00	0.00	0.00	0.00	0.00	0.00	0.00	0.00	0.00
004S013W27A002S/HANSN	0.00	0.00	0.00	0.00	0.00	0.00	0.00	0.00	0.00	0.00	0.00	0.00	0.00

Table 3 - Groundwater Extractions Continued

Party No-Party/SWN/Owner No.	JUL	AUG	SEPT	OCT	NOV	DEC	JAN	FEB	MAR	APR	MAY	JUN	TOTAL
<b>7807 - Tesoro Refining &amp; Marketing Co.</b>	<b>228.04</b>	<b>209.56</b>	<b>192.05</b>	<b>138.32</b>	<b>144.93</b>	<b>167.43</b>	<b>204.71</b>	<b>338.74</b>	<b>381.28</b>	<b>387.62</b>	<b>594.12</b>	<b>724.50</b>	<b>3,711.30</b>
004S013W16J005S/13	67.78	68.14	64.14	66.52	58.08	54.80	119.07	264.71	290.23	8.49	192.41	296.02	496.92
004S013W16R002S/11	0.00	0.00	0.00	0.00	0.00	21.49	0.00	0.00	0.00	298.11	322.90	257.03	1,606.85
004S013W21H002S/4	0.00	0.00	0.00	0.00	0.00	0.00	0.00	0.00	0.00	0.00	0.00	0.00	346.15
004S013W21H005S/7	0.00	0.00	0.00	0.00	0.00	0.00	0.00	0.00	0.00	0.00	0.00	0.00	0.00
004S013W21H006S/8	0.00	0.00	0.00	0.00	0.00	0.00	0.00	0.00	0.00	0.00	0.00	0.00	0.00
004S013W21H007S/12	0.00	0.00	0.00	0.00	0.00	0.00	0.00	0.00	0.00	0.00	0.00	0.00	0.00
004S013W21J002S/10	55.24	54.89	52.67	36.06	48.18	0.00	0.00	0.00	0.00	0.00	0.00	0.00	0.00
004S013W21L001S/3	0.00	0.00	0.00	0.00	0.00	54.98	52.54	45.52	54.69	0.00	0.00	0.00	0.00
004S013W22E001S/5	0.00	0.00	0.00	0.00	0.00	0.00	0.00	0.00	0.00	46.63	48.02	46.75	596.17
004S013W22F001S/9	0.00	0.00	0.00	0.00	0.00	0.00	0.00	0.00	0.00	0.00	0.00	0.00	0.00
004S013W22F002S/HA001	0.00	0.00	0.00	0.00	0.00	0.00	0.00	0.00	0.00	0.00	0.00	0.00	0.00
004S013W22F007S/SRP12	0.00	0.00	0.00	0.00	0.00	0.00	0.00	0.00	0.00	0.00	0.00	0.00	0.00
004S013W27M005S/9	18.52	0.00	0.00	29.21	34.36	0.00	0.00	0.00	0.00	0.00	0.00	0.00	0.00
004S013W27N006S/10	0.00	0.00	0.00	0.00	0.00	30.60	28.85	26.77	32.67	0.00	0.00	0.00	0.00
004S013W34F007S/11	80.10	81.87	70.65	0.00	0.00	0.00	0.00	0.00	0.00	30.69	30.79	28.60	291.06
9S99W99P99S/	0.00	0.00	0.00	0.00	0.00	0.00	0.00	0.00	0.00	0.00	0.00	0.00	0.00
	6.40	4.66	4.59	6.53	4.31	0.00	0.00	0.00	0.00	0.00	0.00	96.10	328.72
						5.56	4.25	1.74	3.69	0.00	0.00	0.00	0.00
									3.70				45.43

Party No-Party/SWN/Owner No.	JUL	AUG	SEPT	OCT	NOV	DEC	JAN	FEB	MAR	APR	MAY	JUN	TOTAL
<b>7850 - Torrance, City of</b>	<b>388.95</b>	<b>381.12</b>	<b>300.18</b>	<b>184.65</b>	<b>140.98</b>	<b>156.93</b>	<b>32.96</b>	<b>92.28</b>	<b>93.10</b>	<b>83.81</b>	<b>171.40</b>	<b>387.57</b>	<b>2,413.93</b>
003S014W34C002S/6	0.00	0.00	0.00	0.00	0.00	0.00	0.00	0.00	0.00	0.00	0.00	0.00	0.00
003S014W34C003S/3902	191.13	190.00	160.62	184.65	140.98	147.92	0.00	0.00	33.23	0.80	110.94	206.32	1,366.59
004S014W09A001S/MDR-2	197.82	191.12	139.56	0.00	0.00	9.01	32.96	92.28	59.87	83.01	60.46	181.25	1,047.34
004S014W14K001S/7	0.00	0.00	0.00	0.00	0.00	0.00	0.00	0.00	0.00	0.00	0.00	0.00	0.00

Table 3 - Groundwater Extractions Continued

Party No-Party/SWN/Owner No.	JUL	AUG	SEPT	OCT	NOV	DEC	JAN	FEB	MAR	APR	MAY	JUN	TOTAL
<b>7913 - Vukelich, Mike Jr.</b>	<b>3.87</b>	<b>4.15</b>	<b>0.12</b>	<b>8.22</b>	<b>3.19</b>	<b>1.13</b>	<b>1.88</b>	<b>2.97</b>	<b>5.81</b>	<b>5.54</b>	<b>5.39</b>	<b>3.83</b>	<b>46.10</b>
004S013W19J006S/829M	3.87	4.15	0.12	8.22	3.19	1.13	1.88	2.97	5.81	5.54	5.39	3.83	46.10
<b>7054 - West Basin Brewer Desalter</b>	<b>118.20</b>	<b>113.76</b>	<b>113.87</b>	<b>81.65</b>	<b>100.40</b>	<b>35.10</b>	<b>0.00</b>	<b>1.35</b>	<b>85.55</b>	<b>104.79</b>	<b>103.73</b>	<b>107.35</b>	<b>965.75</b>
004S014W09A002S/232-03	118.20	113.76	113.87	81.65	100.40	35.10	0.00	1.35	85.55	104.79	103.73	107.35	965.75

# Appendix B

Successions of Adjudicated Rights

June 2015



**Table 5 - Succession of Adjudicated Rights**  
June 2015 (acre-feet)

ABC NURSERY, INC			SOLD TO CITY OF TORRANCE	-59.96	
SUCCESSOR TO JENKINS, HARRY C	1.80		TOTAL		0.00
SUCCESSOR TO TITLE, SIDNEY R AND CHARLOTTE W	13.60		<b>BAUMAN, GUS A</b>	<b>0.00</b>	<b>0.00</b>
SUCCESSOR TO VERBURG, WILLIAM AND CLARA B	6.70		TRANSFERRED TO PALOS VERDES BEGONIA FARM		
SUCCESSOR IN PART TO UNITED CALIFORNIA BANK	2.00		<b>BEGO CORPORATION</b>	<b>4.10</b>	
TOTAL		<u>24.10</u>	SOLD TO ESTATE OF GOLDA DELANEY	-4.10	
<b>ABELL, FRANK</b>	<b>1.80</b>		TOTAL		0.00
SOLD TO CITY OF INGLEWOOD	-1.80		<b>BELVIDERE MUTUAL WATER CO</b>	<b>33.40</b>	
TOTAL		0.00	SOLD TO CITY OF TORRANCE	-33.40	
<b>ALCAST FOUNDRY, ET AL</b>	<b>7.20</b>		TOTAL		0.00
SOLD TO CITY OF TORRANCE	-7.20		BLACK, DANA		
TOTAL		0.00	SUCCESSOR IN PART TO ESTATE OF JOHN GRANT	11.80	
<b>ALLIED CHEMICAL CORP</b>			SOLD TO ECOGAS, INC.	-11.80	
(SEE INDUSTRIAL CHEMICAL DIVISION, ALLIED CHEMICAL CORP)			TOTAL		0.00
ALLIED CORP			BOISE CASCADE BUILDING CO		
(FORMERLY: ALLIED CHEMICAL CORP)			SUCCESSOR IN PART TO JOUGHIN TORRANCE RANCH	16.92	
(NOW KNOWN AS ALLIED-SIGNAL, INC [EL SEGUNDO OFFICE])			SOLD TO INGLEWOOD, CITY OF	-16.92	
ALLIED-SIGNAL, INC (TORRANCE OFFICE)			TOTAL		0.00
SUCCESSOR TO GARRETT CORP, THE (MERGED WITH HONEYWELL INTERNATIONAL, INC AND NAME CHANGED TO HONEYWELL INTERNATIONAL, INC)	22.50		<b>BOARD OF RETIREMENT-LOS ANGELES CO EMPL RET SYS</b>		
TOTAL		0.00	SECOND WEST COAST BASIN JUDGMENT (NOW KNOWN AS LOS ANGELES COUNTY WESTERN AVE GOLF)		
ALLIED-SIGNAL, INC (EL SEGUNDO OFFICE)			BRANDSMA, MAYNARD		
(FORMERLY: ALLIED CORP)	<b>255.00</b>		SUCCESSOR IN PART TO ESTATE OF JOHN GRANT	11.80	
(MERGED WITH HONEYWELL INTERNATIONAL, INC AND NAME CHANGED TO HONEYWELL INTERNATIONAL, INC)	-255.00		SOLD TO HILLSIDE MEMORIAL PARK	-11.80	
TOTAL		0.00	TOTAL		0.00
ALWAG, HILARIO S AND EMMA			<b>BURKE, W F AND LOIS PRICE</b>	<b>9.50</b>	
SUCCESSOR TO T C NAVARRO	53.90		SOLD TO H S SCOTT	-9.50	
SUCCESSOR TO PEGGY SWICK	5.50		TOTAL		0.00
SOLD TO TORRANCE UNIFIED SCHOOL DISTRICT	-59.40		CBS INC		
TOTAL		0.00	FORMERLY COLUMBIA BROADCASTING SYS INC	<b>18.50</b>	
<b>AMERICAN PLANT GROWERS, INC</b>			SOLD TO MORAN, RONALD E	-9.00	
SECOND WEST COAST BASIN JUDGMENT	2.60		TOTAL		9.50
SUCCESSOR TO BEN CLUFF DAIRY	7.40		CALIFORNIA, STATE OF		
SOLD TO SUNRISE GROWERS, INC	-10.00		SUCCESSOR TO ROBERT L FULLILOVE	1.00	
SUCCESSOR TO SUNRISE GROWERS, INC	10.00		SUCCESSOR TO JOE MONIZ JR	2.20	
SOLD TO VUKELICH MIKE, JR.	-10.00		SUCCESSOR IN PART TO KELLY PIPE CO	16.30	
TOTAL		0.00	SUCCESSOR IN PART TO FLAVIO RODRIGUEZ	4.00	
<b>ANDERSON, REMBERT C</b>	<b>80.50</b>		SUCCESSOR IN PART TO A H SMITH (SAM SURBER AND FREDA SMITH)	2.60	
SOLD TO SPARKLETTS DRINKING WATER CORP	-80.50		SOLD TO SPARKLETTS DRINKING WATER CORP	-26.10	
TOTAL		0.00	TOTAL		0.00
<b>AQUA CAPITAL MANAGEMENT LP</b>			<b>CALIFORNIA WATER SERVICE CO</b>	<b>3,071.00</b>	
SUCCESSOR TO ECOGAS	11.80		SUCCESSOR TO PALOS VERDES WATER CO	999.00	
TOTAL		<u>11.80</u>	TOTAL		<u>4,070.00</u>
<b>ASAHI FANCY KOI, INC</b>			<b>CALIFORNIA WATER SERVICE CO (DOMINGUEZ)</b>		
SUCCESSOR IN PART TO JAKE ENGELSMA	2.00	<u>2.00</u>	DOMINGUEZ WATER CO MERGED WITH AND INTO CALIFORNIA WATER SERVICE CO, WATERMASTER ACCOUNT KNOWN AS CALIFORNIA WATER SERVICE CO (DOMINGUEZ)	10,162.45	
ASSOCIATED SOUTHERN INVESTMENT CO (FORMERLY EDISON SECURITIES CO)	<b>46.70</b>		SUCCESSOR IN PART TO HONEYWELL INTERNATIONAL INC	255.00	
SOLD TO SOUTHERN CALIFORNIA EDISON CO	-46.70		TOTAL		<u>10,417.45</u>
TOTAL		0.00	<b>CARSON ESTATE CO</b>	<b>130.00</b>	
ATLANTIC RICHFIELD CO (FORMERLY RICHFIELD OIL CO)	<b>4,428.00</b>		SOLD TO DOMINGUEZ WATER CORP	-130.00	
SUCCESSOR TO MANVILLE SALES CORP	881.00		TOTAL		0.00
SOLD TO TESORO REFINING AND MARKETING COMPANY LLC (6-13-2013)	-5,309.00		<b>CARSON-HARBOR VILLAGE MOBILE HOME PARK</b>		
TOTAL		0.00	SUCCESSOR TO ETCEMENDY, CAROLINE, ESTATE OF	8.20	
<b>AUTOMATION INDUSTRIES, INC-HARRIS TUBE</b>			SOLD TO MONTROSE CHEMICAL CORPORATION OF CALIFORNIA (9-28-2011)	-1.20	
SUCCESSOR TO HARRIS TUBE, INC	0.70	<u>0.70</u>	TOTAL		<u>7.00</u>
<b>BALLMAN, ROSEMARY N</b>	<b>7.00</b>		CARSON-MADRONA CO		
SOLD TO UNITED CALIFORNIA BANK	-7.00		SUCCESSOR TO CHANSLOR-WESTERN OIL AND DEVELOP CO	104.00	<u>104.00</u>
TOTAL		0.00	CENTURY BUILDERS		
<b>BANK OF AMERICA NATIONAL TRUST AND SAVINGS ASSOCIATION (TRUST BI-51)</b>	<b>0.10</b>		SUCCESSOR TO UNION NURSERY, INC	4.70	4.70
RELEASED TO MICHAEL L ROCKWELL	-0.10		<b>CHANDLERS PALOS VERDES SAND AND GRAVEL CORP</b>		
TOTAL		0.00	SECOND WEST COAST BASIN JUDGMENT	95.20	
BARCLAY HOLLANDER CORP (FORMERLY BARCLAY HOLLANDER CURCI INC)			SUCCESSOR TO SOUTHWESTERN PORTLAND CEMENT CO	15.00	
SUCCESSOR IN PART TO JOUGHIN TORRANCE RANCH	3.33		SUCCESSOR TO TORRANCE SAND AND GRAVEL CORP	184.00	
SOLD TO TORRANCE, CITY OF	-3.33		TOTAL		<u>294.20</u>
TOTAL		0.00	<b>CHANSLOR-WESTERN OIL AND DEVELOPMENT CO</b>	<b>104.00</b>	
BARCLAY HOLLANDER CURCI INC (NOW KNOWN AS BARCLAY HOLLANDER CORP)			(FORMERLY CHANSLOR-CANFIELD MIDWAY OIL CO)		
BARCLAY, RICHARD AND R A WATT			SOLD TO CARSON-MADRONA CO	-104.00	
SUCCESSORS TO EMMA J OSBORN	32.66		TOTAL		0.00
SUCCESSORS IN PART TO ISABELA J GRANZ ESTATE	13.55		CHEMICALS CO OF ALLIED CORP (FORMERLY INDUSTRIAL CHEMICAL DIVISION, ALLIED CHEMICAL CORP)		
SUCCESSORS IN PART TO GEORGE R MURDOCK	13.75		(NOW KNOWN AS ALLIED CORP)		

CHEVRON USA INC	4,541.70		ECOGAS, INC.		
(FORMERLY STANDARD OIL CO OF CALIFORNIA)			SUCCESSOR TO BLACK, DANA	11.80	
SUBJECT TO LONG TERM LEASE FROM	59.60		SOLD TO AQUA CAPITAL MANAGEMENT LP	-11.80	
ISABELLA GRANZ PER JUDGEMENT			TOTAL		0.00
TOTAL		4,601.30	ECO SERVICES OPERATIONS LLC	521.00	
<b>CHRISTIE, CLEM, DON C FOHL AND LEON</b>	<b>0.02</b>		(FORMERLY SOLVAY USA INC.)		
<b>LARSON</b>			TOTAL		<u>521.00</u>
(TRUSTEES OF WILMINGTON CEMETERY ASSOC)			<b>EDISON SECURITIES CO</b>		
ABANDONED WATER RIGHT	-0.02	0.00	(NOW KNOWN AS ASSOCIATED SOUTHERN		
TOTAL			INVESTMENT CO)		
CHURCHILL DOWNS CALIFORNIA CO			<b>EL SEGUNDO, CITY OF</b>	953.00	953.00
SUCCESSOR TO HOLLYWOOD PARK	282.00		ENGELSMA, JAKE		
OPERATING CO			SUCCESSOR TO WILBUR HORNSTRA	14.10	
SOLD TO HOLLYWOOD PARK LAND COMPANY,	-282.00		SOLD TO ASAH FANCY KOI, INC	-2.00	
LLC			TRANSFERRED TO SUSAN ENGELSMA,	-12.10	
TOTAL		0.00	TRUSTEE ET AL		
CLUFF, BEN DAIRY			TOTAL		0.00
SUCCESSOR TO EDWARD AND EMILY COST	7.40		ENGELSMA, SUSAN; TRUSTEE OF THE SUSAN		
SOLD TO AMERICAN PLANT GROWERS, INC	-7.40	0.00	ENGELSMA TRUST		
TOTAL			TRANSFERRED FROM JAKE ENGLESMA	12.10	<u>12.10</u>
COAST FOREST PRODUCTS			EQUILON ENTERPRISES, LLC		
SUCCESSOR TO SOUTHWEST STEEL ROLLING	3.40		SUCCESSOR TO TEXACO REFINING AND	3,432.00	
MILLS			MARKETING, INC		
SOLD TO GEORGIA-PACIFIC CORP	-3.40		SOLD TO SHELL OIL PRODUCTS US	-3,432.00	
TOTAL		0.00	TOTAL		0.00
COASTLINE CHURCH OF CHRIST			<b>ETCHEMENDY, CAROLINE, ESTATE OF</b>	8.20	
SUCCESSOR TO LERMENS, EVELYN	0.70	0.70	SOLD TO CARSON-HARBOR VILLAGE MOBILE	-8.20	
COLLISTER, CAMERON			HOME PARK		
SUCCESSOR TO JOUGHIN TORRANCE RANCH	136.82		TOTAL		0.00
QUITCLAIMED TO NORMANDIE PARK	-136.82	0.00	EVERGREEN AMERICA CORP		
TOTAL			SUCCESSOR TO POTHOS CORP	5.40	5.40
<b>COLUMBIA BROADCASTING SYSTEM, INC</b>			<b>EWING, CARMELITA ROSECRANS</b>	91.30	
(NOW KNOWN AS CBS INC)			SOLD TO SOUTHERN CALIFORNIA WATER CO	-91.30	
CONOCOPHILLIPS COMPANY			TOTAL		0.00
SUCCESSOR TO TOSCO CORPORATION			EWING, NED ET AL		
(NOW KNOWN AS PHILLIPS 66 COMPANY)			SUCCESSOR IN PART TO ISABEL J GRANZ	6.50	
<b>COST, EDWARD AND EMILY</b>	<b>7.40</b>		ESTATE		
SOLD TO BEN CLUFF DAIRY	-7.40	0.00	SOLD TO R A WATT, INC	-6.50	
TOTAL			TOTAL		0.00
<b>CURTIS, OWEN W</b>	<b>3.80</b>		FLESH, LESLIE R AND ANDOR PASTERNAK, ET AL		
SOLD TO SOUTHERN CALIFORNIA WATER CO	-3.44	0.36	SUCCESSORS TO ALFRED D AND RUTH	3.50	
TOTAL			SEABACK		
<b>DEL AMO ESTATE CO</b>	<b>121.00</b>		SOLD TO STANLEY C LAGERLOF	-3.50	
SOLD TO DOMINGUEZ WATER CORP	-121.00	0.00	TOTAL		0.00
TOTAL			<b>FLETCHER OIL AND REFINING CO</b>	86.30	
<b>DELANEY, GOLDA, ESTATE OF</b>			(FORMERLY FLETCHER OIL CO)		
(FORMERLY ARTHUR J DELANEY)			SUCCESSOR TO FLETCHER, ROBERT G ET AL	3.70	
SUCCESSOR TO BEGO CORP	4.10	<u>4.10</u>	SOLD TO WESTERN WATER CO	-90.00	
DENNIS, ESTHER M SHEETS			TOTAL		0.00
(FORMERLY ESTHER M SHEETS)	5.50		FLETCHER, ROBERT G, DANIEL S, AND WILFRED O		
SOLD TO TORRANCE, CITY OF	-5.50	0.00	SUCCESSOR TO FRED A JUNGQUIST	3.70	
TOTAL			SOLD TO FLETCHER OIL AND REFINING CO	-3.70	
<b>DESSER ENTERPRISES, INC.</b>			TOTAL		0.00
SECOND WEST COAST BASIN JUDGMENT	0.00	<u>0.00</u>	FUJIMOTO, SAMUEL R		
SOLD TO MYRON Z. CHLAVIN AND NETTIE			(FORMERLY KNOWN AS FUJIMOTO, SAMUEL R		
DESSER TRUST AND JHD PROPERTIES, LLC	-0.00	0.00	AND RAYMOND S)		
<b>DOMINGUEZ ESTATE CO</b>	<b>254.00</b>		SUCCESSOR IN PART TO H J AND DAISY	20.00	
SOLD TO DOMINGUEZ WATER CORP	-254.00	0.00	EARLY		
TOTAL			SOLD TO FUJIMOTO, SAMUEL R, STEVEN T	-20.00	
<b>DOMINGUEZ WATER CORP</b>			AND JON T JOINT TENANTS		
(NOW KNOWN AS DOMINGUEZ WATER CO)			TOTAL		0.00
DOMINGUEZ WATER CO	9,477.80		FUJIMOTO, SAMUEL R AND RAYMOND S		
(FORMERLY KNOWN AS DOMINGUEZ WATER CORP)			(SEE FUJIMOTO, SAMUEL R)		
SUCCESSOR TO CARSON ESTATE CO	130.00		FUJIMOTO, SAMUEL R, STEVEN T AND JON K,		
SUCCESSOR TO DEL AMO ESTATE CO	121.00		JOINT TENANTS		
SUCCESSOR TO DOMINGUEZ ESTATE CO	254.00		SUCCESSOR TO FUJIMOTO, SAMUEL R	20.00	<u>20.00</u>
SUCCESSOR TO DON WILSON BUILDERS	32.60		<b>FULLILOVE, ROBERT L</b>	1.00	
SUCCESSOR TO HEYDENBECK, JEANETTE R	0.70		SOLD TO STATE OF CALIFORNIA	-1.00	
SUCCESSOR TO NAKANO, KIKUNO, ET AL	19.30		TOTAL		0.00
SUCCESSOR IN PART TO H J EARLY	91.00		FUTURA INDUSTRIES, INC		
SUCCESSOR IN PART TO R A WATT, INC	61.85		SUCCESSOR TO SPANISH AMERICAN	44.40	
SOLD IN PART TO WATSON LAND CO	-37.60		INSTITUTE		
SUCCESSOR TO THORPE, GREGORY	11.80		SOLD TO KAUFMAN, LEO AND SHELDON BAER	-44.40	
DOMINGUEZ WATER CO MERGED WITH AND	-10,162.45		TOTAL		0.00
INTO CALIFORNIA WATER SERVICE CO,			GARRETT CORP, THE		
WATERMASTER ACCOUNT KNOWN AS			SUCCESSOR TO SHINODA BROTHERS INC	22.50	
CALIFORNIA WATER SERVICE CO			TRANSFERRED TO ALLIED-SIGNAL INC	-22.50	
(DOMINGUEZ)			(TORRANCE OFFICE)		
TOTAL		0.00	TOTAL		0.00
DON WILSON BUILDERS			GATX TANK STORAGE TERMINALS CORP		
SUCCESSORS TO KASUO, ISAMU, AND	32.60		SUCCESSOR TO PHILLIPS PETROLEUM CO	167.00	
YOSHIKI R KITA			SOLD TO KINDER MORGAN LIQUIDS	-167.00	
SOLD TO DOMINGUEZ WATER CORP	-32.60	0.00	TERMINALS, LLC.		
TOTAL			TOTAL		0.00
DOUGLAS AIRCRAFT CO, INC			GEORGIA-PACIFIC CORP		
(SEE MCDONNELL DOUGLAS CORP)			SUCCESSOR TO COAST FOREST PRODUCTS	3.40	
<b>EARLY, H J AND DAISY</b>	<b>111.00</b>		SOLD TO INGLEWOOD, CITY OF	-3.40	
SOLD TO DOMINGUEZ WATER CORP	-91.00		TOTAL		0.00
SOLD TO SAMUEL R AND RAYMOND S	-20.00		GERAHUE LAND CO		
FUJIMOTO			SUCCESSOR AND ASSIGNEE FOR A S	11.90	
TOTAL		0.00	JOHNSTON DRILL CO		

West Coast Basin Watermaster

ABANDONED WATER RIGHT	-11.90		INTERNATIONAL INC	277.50	
TOTAL		0.00	SOLD IN PART TO CALIFORNIA WATER SERVICE CO (DOMINGUEZ)	-255.00	
<b>GILLINGHAM, FLORENCE R, ET AL</b>	<b>2.40</b>	2.40	TOTAL		<u>22.50</u>
<u>GOLDEN STATE WATER COMPANY</u>			<u>HONOLD, KRISTIN BRANDSMA</u>		
SUCCESSOR TO SOUTHERN CALIFORNIA WATER COMPANY (NAME CHANGE)	7,502.24	<u>7,502.24</u>	SUCCESSOR IN PART TO ESTATE OF JOHN GRANT	11.80	<u>11.80</u>
<b>GONZALES, FELIPE AND GABRIELA</b>			<b>HORNSTRA, WILBUR</b>	<b>14.10</b>	
(NOW KNOWN AS GONZALES, GABRIELA AND MARIA R)			SOLD TO JAKE ENGELSMA	-14.10	
GONZALES, GABRIELA AND MARIA R			TOTAL		0.00
(FORMERLY GONZALES, FELIPE AND GABRIELA)	<b>34.30</b>		HUGHES AIRCRAFT	0.00	0.00
SOLD TO TORRANCE, CITY OF	-34.30		(SEE 1981 JUDGMENT ORDER)		
TOTAL		0.00	HUNT, DONALD G		
GRAND LAND CO			SUCCESSOR TO JAMES SCANDA	1.90	
SUCCESSOR IN PART TO SMITH, A H, ET AL	5.70		SOLD TO KENICHI INOSE	-1.90	
ABANDONED WATER RIGHTS 1961-62	-5.70		TOTAL		0.00
TOTAL		0.00	INDUSTRIAL CHEMICAL DIVISION, ALLIED CHEMICAL CORP		
<b>GRANT, JOHN, ESTATE OF</b>	<b>59.00</b>		(FORMERLY ALLIED CHEMICAL CORP, GEN CHEMICAL CO)		
APPORTIONED IN PART TO BLACK, DANA	-11.80		(NOW KNOWN AS ALLIED CORP)		
APPORTIONED IN PART TO BRANDSMA, MAYNARD	-11.80		<b>INGLEWOOD, CITY OF</b>	<b>4,382.00</b>	
APPORTIONED IN PART TO HONOLD, KRISTIN BRANDSMA	-11.80		SUCCESSOR TO ABELL, FRANK	1.80	
APPORTIONED IN PART TO THORPE, GREGORY	-11.80		SUCCESSOR TO BOISE CASCADE BUILDING CO	16.92	
APPORTIONED IN PART TO THORPE, TERRENCE	-11.80		SUCCESSOR TO GEORGIA-PACIFIC CORP	3.40	
TOTAL		0.00	SUCCESSOR TO KAUFMAN, LEO AND SHELDON BAER	44.40	
<b>GRANZ, ISABELA J</b>	<b>380.00</b>		SUCCESSOR IN PART TO GEORGE R MURDOCK	1.37	
PARTITIONED TO HEIRS:			TOTAL		4,449.89
ISABELA J GRANZ ESTATE	-33.80		INOSE ET AL		
JOUGHIN TORRANCE RANCH	-212.42		(KEN K INOSE, KAY K INOSE, KIYOKO YOSHIYAMA, KENICHI INOSE, KAYOKO K INOSE AND DAVID T NAKATANI, TRUSTEE OF THE INOSE CHILDREN TRUST U/D/T DATE 11/1/78)		
GEORGE R MURDOCK	-15.12		(FORMERLY INOSE, KENICHI)		
EMMA J OSBORN	-32.66		SUCCESSOR TO HUNT, DONALD G	1.90	
SUBJECT TO LONG TERM LEASE TO: STANDARD OIL CO OF CALIF	-59.60		SUCCESSOR TO THAXTER, RALPH AND LOIS A LENOIR	3.50	
SUPERIOR OIL CO	-26.40		SOLD TO POTHOS CORP	-5.40	
TOTAL		0.00	TOTAL		0.00
GRANZ, ISABELA J, ESTATE OF			INOSE, KENICHI		
SUCCESSOR IN PART TO ISABELA J GRANZ	33.80		(NOW KNOWN AS INOSE ET AL)		
SOLD IN PART TO RICHARD BARCLAY AND R A WATT	-13.55		JENKINS, HARRY C		
SOLD IN PART TO NED EWING, ET AL	-6.50		SUCCESSOR TO H L PERRY	1.80	
SOLD IN PART TO R A WATT, INC	-13.75		SOLD TO ABC NURSERY, INC	-1.80	
TOTAL		0.00	TOTAL		0.00
HARRIS, R AND L			<b>JOHNS-MANVILLE PRODUCTS CORP</b>		
SUCCESSOR TO LAWRENCE I LISTON	0.70		(SEE JOHNS-MANVILLE SALES CORP)		
DISCLAIMED WATER RIGHT	-0.70		JOHNS-MANVILLE SALES CORP		
TOTAL		0.00	(FORMERLY: JOHNS-MANVILLE PRODUCTS CORP MANVILLE SERVICE CORP)		
HARRIS TUBE, INC			(NOW KNOWN AS MANVILLE SALES CORP)		
SUCCESSOR IN PART TO B ROBINSON AND ASSOCIATES	0.70		TOTAL		0.00
TRANSFERRED TO AUTOMATION IND INC-HARRIS TUBE	-0.70		<b>JOHNSTON, A S, DRILLING CO</b>	<b>11.90</b>	
TOTAL		0.00	ASSIGNED TO GERAHUE LAND CO	-11.90	
<b>HAWTHORNE, CITY OF</b>	<b>1,882.00</b>	<u>1,882.00</u>	TOTAL		0.00
<b>HENDERSON, BEATRICE M</b>	<b>1.30</b>		<b>JONES, ANNA MAE</b>	<b>50.20</b>	
ABANDONED WATER RIGHT	-1.30		SOLD TO CITY OF TORRANCE	-50.20	
TOTAL		0.00	TOTAL		0.00
HEYDENBECK, JEANETTE R			JOUGHIN TORRANCE RANCH		
(FORMERLY JEANETTE R REIFSNYDER)	<b>0.70</b>		SUCCESSOR IN PART TO ISABELA J GRANZ	212.42	
SOLD TO DOMINGUEZ WATER CORP	-0.70		SOLD IN PART TO BARCLAY HOLLANDER	-3.33	
TOTAL		0.00	CURCI INC		
<b>HILLSIDE MEMORIAL PARK</b>	<b>16.70</b>		SOLD IN PART TO BOISE CASCADE BUILDING CO	-16.92	
SUCCESSOR TO SANTA FE LAND IMPROVEMENT CO	39.50		SOLD IN PART TO COLLISTER, CAMERON	-136.82	
SUCCESSOR TO SIGMUND S AND LIONEL S HOCKWALD	12.50		SOLD IN PART TO R A WATT, INC	-55.35	
SUCCESSOR TO THORPE, TERRENCE	11.80		TOTAL		0.00
SUCCESSOR TO BRANDSMA, MAYNARD	11.80		JUNGQUIST, FRED A		
TOTAL		<u>92.30</u>	(FORMERLY KATHERINE P WOODMAN)	<b>3.70</b>	
<b>HOCKWALD, SIGMUND S AND LIONEL S</b>	<b>12.50</b>		SOLD TO ROBERT G FLETCHER ET AL	-3.70	
SOLD TO HILLSIDE MEMORIAL PARK	-12.50		TOTAL		0.00
TOTAL		0.00	KAHLERT, ET AL		
HOLLYWOOD PARK INC			AND SUCCESSOR IN PART TO KELLY PIPE CO	18.90	
(FORMERLY HOLLYWOOD TURF CLUB)			SOLD TO SPARKLETTS DRINKING WATER CORP	-18.90	
(NOW KNOWN AS HOLLYWOOD PARK OPERATING CO)			TOTAL		0.00
<u>HOLLYWOOD PARK LAND COMPANY, LLC</u>			KAUFMAN, LEO AND SHELDON BAER		
SUCCESSOR TO CHURCHILL DOWNS CALIFORNIA COMPANY	282.00	<u>282.00</u>	SUCCESSOR TO FUTURA INDUSTRIES INC	44.40	
HOLLYWOOD PARK OPERATING CO			SOLD TO CITY OF INGLEWOOD	-44.40	
(FORMERLY HOLLYWOOD PARK INC)	<b>282.00</b>		TOTAL		0.00
SOLD TO CHURCHILL DOWNS CALIFORNIA CO	-282.00		<b>KELLY PIPE CO</b>	<b>49.00</b>	
TOTAL		0.00	SOLD IN PART TO STATE OF CALIFORNIA	-16.30	
<b>HOLLYWOOD TURF CLUB</b>			SOLD IN PART TO KAHLERT, ET AL	-18.90	
(NOW KNOWN AS HOLLYWOOD PARK INC)			SOLD IN PART TO SPARKLETTS DRINKING WATER CORP	-13.80	
<u>HONEYWELL INTERNATIONAL INC</u>			TOTAL		0.00
MERGED WITH ALLIED-SIGNAL INC (EL SEGUNDO AND TORRANCE OFFICES) AND THE CORP NAME CHANGED TO HONEYWELL			<u>KINDER MORGAN LIQUIDS TERMINALS, LLC.</u>		
			SUCCESSOR TO GATX TANK STORAGE	167.00	167.00

TERMINALS CORP.			SOLD TO SOUTHWEST STEEL ROLLING MILLS TOTAL	-3.40	0.00
KITA, ISAMU, KASUO, AND YOSHIKI R	32.60		<b>MAYFLOWER NURSERIES</b>	<b>0.00</b>	<u>0.00</u>
SOLD TO DON WILSON BUILDERS	-32.60		(HERBERT SAKAYE FUKUWAI, DBA)		
TOTAL		0.00	<b>MCCANDLESS, JAMES</b>	<b>6.70</b>	
<b>KURTZ, GLADYS</b>	<b>3.50</b>		SOLD TO SPARKLETTS DRINKING WATER CORP	-6.70	
SOLD TO SPARKLETTS DRINKING WATER CORP	-3.50		TOTAL		0.00
TOTAL		0.00	<b>MCDONNELL DOUGLAS CORP</b>		
LAGERLOF, STANLEY C			(FORMERLY DOUGLAS AIRCRAFT, CO INC)		
SUCCESSOR TO LESLIE R FLESCHE AND ANDOR PASTERNAK, ET AL	3.50		LONG TERM LEASE FROM UNITED STATES NAVY DEPARTMENT	1.70	<u>1.70</u>
SOLD TO SHELL OIL CO	-3.50		<b>MOBIL OIL CORP</b>		
TOTAL		0.00	(FORMERLY SOCONY MOBIL OIL CO)	<b>2,570.00</b>	
<b>LAWLER, JAMES K</b>	<b>3.10</b>		SUCCESSOR TO SUPERIOR OIL CO	26.40	<u>2,596.40</u>
SOLD TO B ROBINSON AND ASSOC	-3.10		TOTAL		
TOTAL		0.00	<b>MONETA MUTUAL WATER CO</b>	<b>916.00</b>	
LERMENS, EVELYN			SOLD TO CITY OF TORRANCE	-916.00	
(FORMERLY LERMENS, ALFRED)	<b>0.70</b>		TOTAL		0.00
SOLD TO COASTLINE CHURCH OF CHRIST	-0.70		<b>MONIZ, JOE JR</b>	<b>2.20</b>	
TOTAL		0.00	SOLD TO STATE OF CALIFORNIA	-2.20	
<b>LEUZINGER, EMMA L</b>	<b>1.40</b>	1.40	TOTAL		0.00
<b>LISTON, LAWRENCE</b>	<b>0.70</b>		<b>MONTROSE CHEMICAL CORPORATION OF CALIFORNIA</b>		
SOLD TO R AND L HARRIS	-0.70		SUCCESSOR TO CARSON-HARBOR VILLAGE MOBILE HOME PARK (9-28-2011)	1.20	<u>1.20</u>
TOTAL		0.00	<b>MORAN, RONALD E</b>		
LITTLE, WILLIAM			SUCCESSOR IN PART TO COLUMBIA BROADCASTING SYSTEM, INC	9.00	
SUCCESSOR TO ROCKWELL, MICHAEL	0.10		SOLD TO CITY OF TORRANCE	-9.00	
SOLD TO WATT INDUSTRIAL PROPERTIES	-0.10		TOTAL		0.00
TOTAL		0.00	<b>MORI, ROY H AND KENJI</b>		
LOMITA, CITY OF WATER SYSTEM (WWD 13) (FORMERLY LOS ANGELES COUNTY WATERWORKS DISTRICT NO 13)	<b>1,352.00</b>	1,352.00	SECOND WEST COAST BASIN JUDGMENT	5.60	
<b>LONG BEACH, CITY OF</b>	<b>0.70</b>	0.70	SOLD TO NOZAKI, SUMIKICHI	-2.00	
<b>LOPES, FRANK</b>	<b>3.70</b>	3.70	TOTAL		<u>3.60</u>
<b>LOS ANGELES, CITY OF</b>	<b>1,503.00</b>	<u>1,503.00</u>	MURDOCK, GEORGE R		
<b>LOS ANGELES COUNTY-ALONDRA PARK</b>	<b>28.70</b>		SUCCESSOR IN PART TO ISABELA J GRANZ	15.12	
SUCCESSOR TO LOS ANGELES COUNTY FLOOD CONTROL DIST	39.00		SOLD IN PART TO R BARCLAY AND R A WATT	-13.75	
MERGED WITH LOS ANGELES COUNTY CHESTER L. WASHINGTON GOLF COURSE	-67.70		SOLD IN PART TO CITY OF INGLEWOOD	-1.37	
UNDER NEW NAME "LOS ANGELES COUNTY RECREATION FACILITIES"			TOTAL		0.00
TOTAL		0.00	<b>MYRON Z. CHLAVIN AND NETTIE DESSER TRUST AND JHD PROPERTIES, LLC</b>		
LOS ANGELES COUNTY CHESTER L WASHINGTON GOLF COURSE			SUCCESSOR TO DESSER ENTERPRISES, INC.	0.00	<u>0.00</u>
(FORMERLY LOS ANGELES COUNTY WESTERN AVENUE GOLF COURSE)	296.00		<b>NAKANO, KIKUNO, ET AL</b>	<b>19.30</b>	
MERGED WITH LOS ANGELES COUNTY ALONDRA PARK UNDER NEW NAME "LOS ANGELES COUNTY RECREATION FACILITIES"	-296.00		SOLD TO DOMINGUEZ WATER CORP	-19.30	
TOTAL		0.00	TOTAL		0.00
<b>LOS ANGELES COUNTY FLOOD CONTROL DISTRICT</b>	<b>37.60</b>		<b>NAVARRO, T C</b>	<b>53.90</b>	
SUCCESSOR IN PART TO A H SMITH, ET AL	1.40		SOLD TO HILARIO S AND EMMA ALWAG	-53.90	
SOLD TO LOS ANGELES COUNTY - ALONDRA PARK	-39.00		TOTAL		0.00
TOTAL		0.00	<b>NORAIR, A DIVISION OF NORTHROP CORP</b> (FORMERLY KNOWN AS NORTHROP AIRCRAFT, INC) (NOW KNOWN AS NORTHROP CORP)		
LOS ANGELES COUNTY RECREATION FACILITIES MERGER OF LOS ANGELES COUNTY ALONDRA PARK, AND	67.70		NORMANDIE PARK		
LOS ANGELES COUNTY CHESTER L. WASHINGTON GOLF COURSE	296.00		SUCCESSOR TO COLLISTER, CAMERON	136.82	
TOTAL		363.70	SOLD TO CITY OF TORRANCE	-136.82	
<b>LOS ANGELES COUNTY SANITATION DIST NO 2</b>	<b>102.00</b>	<u>102.00</u>	TOTAL		0.00
<b>LOS ANGELES COUNTY WATERWORKS DISTRICT NO 13</b> (NOW KNOWN AS LOMITA, CITY OF WATER SYSTEM WWD 13)			<b>NORTHROP CORP</b>	<b>38.15</b>	<u>38.15</u>
<b>LOS ANGELES COUNTY WATERWORKS DISTRICT NO 22</b>	<b>551.00</b>		(FORMERLY KNOWN AS NORAIR, A DIV OF NORTHROP CORP)		
SOLD TO SOUTHERN CALIF WATER CO	-551.00		NOZAKI, SUMIKICHI		
TOTAL		0.00	SUCCESSOR IN PART TO MORI, ROY H AND KENJI	2.00	
LOS ANGELES COUNTY WESTERN AVE GOLF COURSE (FORMERLY BOARD OF RETIREMENT OF THE LOS ANGELES COUNTY EMPLOYEES RETIREMENT SYSTEM) (NOW KNOWN AS LOS ANGELES CHESTER L WASH GOLF)			SUCCESSOR IN PART TO UNITED CALIFORNIA BANK	5.00	
<b>LOYOLA MARYMOUNT UNIVERSITY</b> (FORMERLY LOYOLA UNIVERSITY OF LOS ANGELES)	<b>48.10</b>	<u>48.10</u>	TOTAL		<u>7.00</u>
<b>MANHATTAN BEACH, CITY OF</b>	<b>1,131.20</b>	<u>1,131.20</u>	OSBORN, EMMA J		
MANVILLE SALES CORP	<b>881.00</b>		SUCCESSOR IN PART TO ISABELA J GRANZ	32.66	
(FORMERLY: JOHNS-MANVILLE SALES CORP JOHNS-MANVILLE PRODUCTS CORP MANVILLE SERVICE)			SOLD TO R BARCLAY AND R A WATT	-32.66	
SOLD TO ATLANTIC RICHFIELD CO	-881.00		TOTAL		0.00
TOTAL		0.00	<b>OTANI, CHISATO</b>	<b>0.00</b>	<u>0.00</u>
MANVILLE SERVICE CORP (SEE JOHNS-MANVILLE SALES CORP)			<b>PACIFIC CREST CEMETERY CO</b>	<b>17.70</b>	
<b>MARTIN BROTHERS BOX CO, INC</b>	<b>3.40</b>		SUCCESSOR TO H S SCOTT	9.50	
			SUCCESSOR TO WADA, KAORU AND SATORU	12.20	
			TOTAL		39.40
			<b>PALOS VERDES BEGONIA FARM</b>		
			SUCCESSOR TO GUS A BAUMAN	0.00	<u>0.00</u>
			<b>PALOS VERDES WATER CO</b>	<b>999.00</b>	
			SOLD TO CALIFORNIA WATER SERVICE CO	-999.00	
			TOTAL		0.00
			<b>PARK WATER CO</b>	<b>160.00</b>	
			SOLD TO SOUTHERN CALIFORNIA WATER	-160.00	
			TOTAL		0.00
			<b>PARKE, ZORAIDA</b>	<b>1.80</b>	
			SOLD TO H L PERRY	-1.80	
			TOTAL		0.00
			<b>PASCHKE, WILLIAM JOSEPH</b>	<b>0.02</b>	
			ABANDONED WATER RIGHT	-0.02	
			TOTAL		0.00
			PERRY, H L		
			SUCCESSOR TO ZORAIDA PARKE	1.80	

West Coast Basin Watermaster

SOLD TO HARRY C JENKINS	-1.80		TOTAL		0.00
TOTAL		0.00			
<b>PHILLIPS 66 COMPANY</b> (FORMERLY CONOCOPHILLIPS COMPANY)	6,170.00		<b>SHINODA BROTHERS, INC</b> SECOND WEST COAST BASIN JUDGMENT	22.50	
PHILLIPS PETROLEUM CO (FORMERLY TIDEWATER OIL CO)	167.00		SOLD TO GARRETT CORP, THE	-22.50	
SOLD TO GATX TANK STORAGE TERM CORP	-167.00		TOTAL		0.00
TOTAL		<u>6,170.00</u>	<b>SMITH, A H, (SAM SURBER AND FRED A SMITH)</b>	9.70	
POTHOS CORP			SOLD IN PART TO STATE OF CALIFORNIA	-2.60	
SUCCESSOR TO INOSE ET AL	5.40		SOLD IN PART TO GRAND LAND CO	-5.70	
SOLD TO EVERGREEN AMERICA CORP	-5.40		SOLD IN PART TO L A CO FLOOD CONTROL DISTRICT	-1.40	
TOTAL		0.00	TOTAL		0.00
<b>REHOR, JOSEPHINE P</b>	2.20	<u>2.20</u>	<b>SOCONY MOBIL OIL CO</b> (SEE MOBIL OIL CO)	10.40	
<b>REIFSNYDER, JEANETTE R</b> (NOW KNOWN AS JEANNETTE R HEYDENBECK)			SOLVAY USA INC.		
RHODIA, INC (NOW KNOWN AS SOLVAY USA INC.)			(NOW KNOWN AS ECO SERVICES OPERATIONS LLC)		
SUCCESSOR TO RHONE-POULENC INC			<b>SOUTHERN CALIFORNIA EDISON CO</b> SUCCESSOR TO ASSOCIATED SOUTHERN INVESTMENT CO	46.70	
RHONE-POULENE BASIC CHEMICALS CO			TOTAL		<u>57.10</u>
SUCCESSOR TO STAUFFER CHEMICAL CO	521.00		<b>SOUTHERN CALIFORNIA WATER CO</b>	6,265.30	
SOLD TO RHONE-POULENE INC	-521.00		SUCCESSOR TO EWING, CARMELITA ROSECRANS	91.30	
TOTAL		0.00	SUCCESSOR TO LOS ANGELES COUNTY WATERWORKS DIST NO 22	551.00	
RHONE-POULENC INC			SUCCESSOR TO PARK WATER CO	160.00	
SUCCESSOR TO RHONE-POULENC, BASIC CHEMICALS CO	521.00		SUCCESSOR TO RYAN AERONAUTICAL CO	20.20	
SOLD TO RHODIA, INC	-521.00		SUCCESSOR TO SOUTHERN PACIFIC CO	166.00	
TOTAL		0.00	SUCCESSOR IN PART TO OWEN W CURTIS	3.44	
<b>RICHFIELD OIL CORP</b> (NOW KNOWN AS ATLANTIC RICHFIELD CO)			SUCCESSOR IN PART TO B ROBINSON AND ASSOCIATES	2.40	
ROBINSON, B. AND ASSOCIATES			SUCCESSOR TO WESTERN WATER SERVICE COMPANY	242.60	
SUCCESSOR TO JAMES K LAWLER	3.10		NAME CHANGE TO GOLDEN STATE WATER COMPANY	-7,502.24	
SOLD IN PART TO HARRIS TUBE, INC	-0.70		TOTAL		0.00
SOLD IN PART TO SOUTHERN CALIFORNIA WATER CO	-2.40		<b>SOUTHERN PACIFIC CO</b>	166.00	
TOTAL		0.00	SOLD TO SO CALIFORNIA WATER CO	-166.00	
ROCKWELL, MICHAEL L			TOTAL		0.00
SUCCESSOR TO BANK OF AMERICA NATIONAL TRUST AND SAVINGS ASSOCIATION (TRUST B 1-51)	0.10		<b>SOUTHERN WESTERN PORTLAND CEMENT COMPANY</b>	15.00	
SOLD TO LITTLE, WILLIAM	-0.10		SOLD TO CHANDLERS PALOS VERDES AND GRAVEL CORP	-15.00	
TOTAL		0.00	TOTAL		0.0
<b>RODRIGUEZ, FLAVIO</b>	6.10		SOUTHWEST STEEL ROLLING MILLS		
SOLD TO STATE OF CALIFORNIA	-4.00		SUCCESSOR TO MARTIN BROTHERS BOX CO, INC	3.40	
DISCLAIMED WATER RIGHT	-2.10		SOLD TO COAST FOREST PRODUCTS	-3.40	
TOTAL		0.00	TOTAL		0.00
<b>ROMAN CATHOLIC ARCHBISHOP OF LOS ANGELES (HOLY CROSS CEMETERY)</b>	72.30	<u>72.30</u>	<b>SPANISH AMERICAN INSTITUTE</b>	44.40	
RUFFNER CORP			SOLD TO FUTURA INDUSTRIES, INC	-44.40	
SUCCESSOR TO LOUIS M SEPULVEDA	0.70		TOTAL		0.00
ABANDONED WATER RIGHT	-0.70		SPARKLETT'S DRINKING WATER CORP		
TOTAL		0.00	SUCCESSOR TO ANDERSON, REMBERT C, ET AL	80.50	
<b>RYAN AERONAUTICAL CO</b>	20.20		SUCCESSOR TO CALIFORNIA, STATE OF	26.10	
SOLD TO SOUTHERN CALIFORNIA WATER CO	-20.20		SUCCESSOR TO KAHLERT, ET AL	18.90	
TOTAL		0.00	SUCCESSOR TO KURTZ, GLADYS	3.50	
<b>SANTA FE LAND IMPROVEMENT CO</b>	39.50		SUCCESSOR TO MCCANDLESS, JAMES	6.70	
SOLD TO HILLSIDE MEMORIAL PARK	-39.50		SUCCESSOR TO WECHSLER, B A	3.10	
TOTAL		0.00	SUCCESSOR IN PART TO KELLY PIPE CO	13.80	
<b>SCANDA, JAMES AND GEORGE NASSIN</b>	1.90		SOLD TO WESTERN WATER CO	-152.60	
SOLD TO DONALD G HUNT	-1.90		TOTAL		0.00
TOTAL		0.00	<b>STANDARD OIL CO OF CALIFORNIA</b> (NOW KNOWN AS CHEVRON U S A, INC)		
<b>SCHLAEGEL, KEITH W AND OPAL B</b>	13.60		<b>STAUFFER CHEMICAL CO</b>	521.00	
SOLD TO SIDNEY R AND CHARLOTTE W TITLE	-13.60		SOLD TO RHONE-POULENC BASIC CHEMICALS CO	-521.00	
TOTAL		0.00	TOTAL		0.00
SCOTT, H S			SUNRISE GROWERS, INC		
SUCCESSOR TO W F BURKE AND LOIS PRICE	9.50		SUCCESSOR TO AMERICAN PLANT GROWERS INC	10.00	
QUITCLAIMED TO PACIFIC CREST CEMETERY CO	-9.50		SOLD TO AMERICAN PLANT GROWERS, INC	-10.00	
TOTAL		0.00	TOTAL		0.00
<b>SEABACK, ALFRED D AND RUTH</b>	3.50		SUPERIOR OIL CO		
SOLD TO LESLIE R FLESH AND OR PASTERNAK, ET AL	-3.50		SUBJECT TO LONG TERM LEASE FROM ISABELA J GRANZ	26.40	
TOTAL		0.00	SOLD TO MOBIL OIL CORP	-26.40	
<b>SEPULVEDA, LOUIS M</b>	0.70		TOTAL		0.00
ACQUIRED BY RUFFNER CORP	-0.70		<b>SWICK, PEGGY</b>	5.50	
TOTAL		0.00	SOLD TO HILARIO AND EMMA ALWAG	-5.50	
SHEETS, ESTHER M (FORMERLY CLYDE L SHEETS) (SEE DENNIS, ESTHER M SHEETS)			TOTAL		0.00
<b>SHELL OIL CO</b>	4,516.00		TESORO REFINING AND MARKETING COMPANY		
SUCCESSOR TO LAGERLOF, STANLEY C	3.50		SUCCESSOR TO SHELL OIL PRODUCTS US (NOW KNOWN AS TESORO REFINING & MARKETING COMPANY LLC)		
SOLD IN PART TO UNION OIL CO OF CAL	-1,974.00		<b>TESORO REFINING &amp; MARKETING COMPANY LLC</b> (FORMERLY TESORO REFINING AND MARKETING COMPANY)	3,432.00	
SOLD IN PART TO UNION OIL CO OF CAL	-1,526.00				
TOTAL		<u>1,019.50</u>			
SHELL OIL PRODUCTS US					
SUCCESSOR TO EQUILON ENTERPRISES, LLC	3,432.00				
SOLD TO TESORO REFINING AND MARKETING COMPANY	-3,432.00				



SUCCESSOR TO ATLANTIC RICHFIELD COMPANY (6-13-2013)	5,309.00	<u>8,741.00</u>	SUCCESSOR TO AMERICAN PLANT GROWERS, INC.	10.00	<u>10.00</u>
<b>TEXACO, INC</b>			<b>WADA, KAORU AND SATORU</b>	<b>12.20</b>	
(NOW KNOWN AS TEXACO REFINING AND MARKETING, INC)			SOLD TO PACIFIC CREST CEMETERY CO	-12.20	0.00
TEXACO REFINING AND MARKETING, INC (FORMERLY: TEXACO, INC)	<b>3,432.00</b>		<b>WATKINSON, JOSEPHINE</b>	<b>3.10</b>	
SOLD TO EQUILON ENTERPRISES, LLC	-3,432.00		SOLD TO MATES TUNE, ET AL	-3.10	0.00
TOTAL		0.00	<b>WATSON LAND CO</b>	<b>42.60</b>	
<b>THAXTER, RALPH AND LOIS A LENOIR</b>	<b>3.50</b>		SUCCESSOR IN PART TO DOMINGUEZ WATER CORP	37.60	
SOLD TO KENICHI INOSE	-3.50		TOTAL		<u>80.20</u>
TOTAL		0.00	<b>WATT INDUSTRIAL PROPERTIES</b>		
THORPE, GREGORY			SUCCESSOR TO WILLIAM LITTLE	0.10	0.10
SUCCESSOR IN PART TO ESTATE OF JOHN GRANT	11.80		WATT, R A, INC		
SOLD TO DOMINGUEZ WATER CORP	-11.80		SUCCESSOR TO NED EWING, ET AL	6.50	
TOTAL		0.00	SUCCESSOR IN PART TO ISABELA J GRANZ ESTATE	13.75	
THORPE, TERRENCE			SUCCESSOR IN PART TO JOUGHIN TORRANCE RANCH	55.35	
SUCCESSOR IN PART TO ESTATE OF JOHN GRANT	11.80		SOLD TO DOMINGUEZ WATER CORP	-61.85	
SOLD TO HILLSIDE MEMORIAL PARK	-11.80		SOLD TO CITY OF TORRANCE	-13.75	
TOTAL		0.00	TOTAL		0.00
<b>TIDEWATER OIL CO</b>			WECHSLER, B A		
(SEE PHILLIPS PETROLEUM CO)			SUCCESSOR TO MATES TUNE, ET AL	3.10	
TITLE, SIDNEY R AND CHARLOTTE W			SOLD TO SPARKLETTS DRINKING WATER CORP	-3.10	
SUCCESSOR TO KEITH W AND OPAL B SCHLAEGE L	13.60		TOTAL		0.00
SOLD TO ABC NURSERY, INC	-13.60		WESTERN WATER CO		
TOTAL		0.00	SUCCESSOR TO FLETCHER OIL AND REFINING CO	90.00	
<b>TORRANCE, CITY OF</b>	<b>2,519.00</b>		SUCCESSOR TO SPARKLETTS DRINKING WATER CORP	152.60	
SUCCESSOR TO BARCLAY HOLLANDER CORP	3.33		SOLD TO WESTERN WATER SERVICES CO	-242.60	
SUCCESSOR TO BARCLAY, RICHARD AND WATT, R A	59.96		TOTAL		0.00
SUCCESSOR TO BELVIDERE MUTUAL WATER CO	33.40		<b>WESTERN WATER SERVICES CO *</b>		
SUCCESSOR TO DENNIS, ESTHER M SHEETS	5.50		SUCCESSOR TO WESTERN WATER CO.	242.60	
SUCCESSOR TO ALCAST FOUNDRY ET AL	7.20		SOLD TO SOUTHERN CALIFORNIA WATER COMPANY	-242.60	
SUCCESSOR TO GONZALES, GABRIELA AND MARIA R	34.30		TOTAL		<u>0.00</u>
SUCCESSOR TO JONES, ANNA MAE	50.20		<b>WESTON INVESTMENT CO</b>	<b>184.00</b>	
SUCCESSOR TO MONETA WATER CO	916.00		SOLD TO TORRANCE SAND AND GRAVEL CORP	-184.00	
SUCCESSOR TO MORAN, RONALD E	9.00		TOTAL		0.00
SUCCESSOR TO NORMANDIE PARK	136.82		<b>WISEBURN SCHOOL DISTRICT</b>	<b>8.20</b>	<u>8.20</u>
SUCCESSOR TO TORRANCE UNIFIED SCHOOL DISTRICT	59.40		<b>WOODMAN, KATHERINE P</b>		
SUCCESSOR TO UNITED STATES STEEL CORP	1,791.00		(SEE FRED A JUNGQUIST)		
SUCCESSOR TO WATT, R A, INC	13.75		<b>ZEIGLER, MAXWELL T</b>	<b>0.00</b>	<u>0.00</u>
TOTAL		<u>5,638.86</u>			
TORRANCE SAND AND GRAVEL CORP			GRAND TOTAL	64,468.25	64,468.25
SUCCESSOR TO WESTON INVESTMENT CO	184.00				
SOLD TO CHANDLERS PALOS VERDES SAND AND GRAVEL CORP	-184.00				
TOTAL		0.00			
TORRANCE UNIFIED SCHOOL DISTRICT					
SUCCESSOR TO HILARIO S AND EMMA ALWAG	59.40				
SOLD TO CITY OF TORRANCE	-59.40				
TOTAL		0.00			
TOSCO CORP					
SUCCESSOR TO UNION OIL CO OF CALIF	6,170.00				
MERGED INTO CONOCOPHILLIS COMPANY	-6,170.00				
TOTAL		0.00			
TUNE, MATES, ET AL					
SUCCESSOR TO JOSEPHINE WATKINSON	3.10				
SOLD TO B A WECHSLER	-3.10				
TOTAL		0.00			
<b>UNION NURSERY, INC</b>					
SECOND WEST COAST BASIN JUDGMENT	4.70				
SOLD TO CENTURY BUILDERS	-4.70				
TOTAL		0.00			
<b>UNION OIL CO OF CALIFORNIA</b>	<b>2,670.00</b>				
SUCCESSOR IN PART TO SHELL OIL CO	1,974.00				
SUCCESSOR IN PART TO SHELL OIL CO	1,526.00				
SOLD TO TOSCO CORP	-6,170.00				
TOTAL		0.00			
UNITED CALIFORNIA BANK					
SUCCESSOR TO BALLMAN, ROSEMARY N	7.00				
SOLD TO A B C NURSERY, INC	-2.00				
SOLD TO NOZAKI, SUMIKICHI	-5.00				
TOTAL		0.00			
<b>UNITED STATES NAVY DEPARTMENT</b>	<b>1.70</b>				
LONG TERM LEASE TO MCDONNELL DOUGLAS CORP PER JUDGEMENT	-1.70				
TOTAL		0.00			
<b>UNITED STATES STEEL CORP</b>	<b>1,791.00</b>				
SOLD TO TORRANCE, CITY OF	-1,791.00				
TOTAL		0.00			
<b>VERBURG, WILLIAM AND CLARA B</b>	<b>6.70</b>				
SOLD TO ABC NURSERY, INC	-6.70				
TOTAL		0.00			
<b>VUKELICH MIKE, JR.</b>					